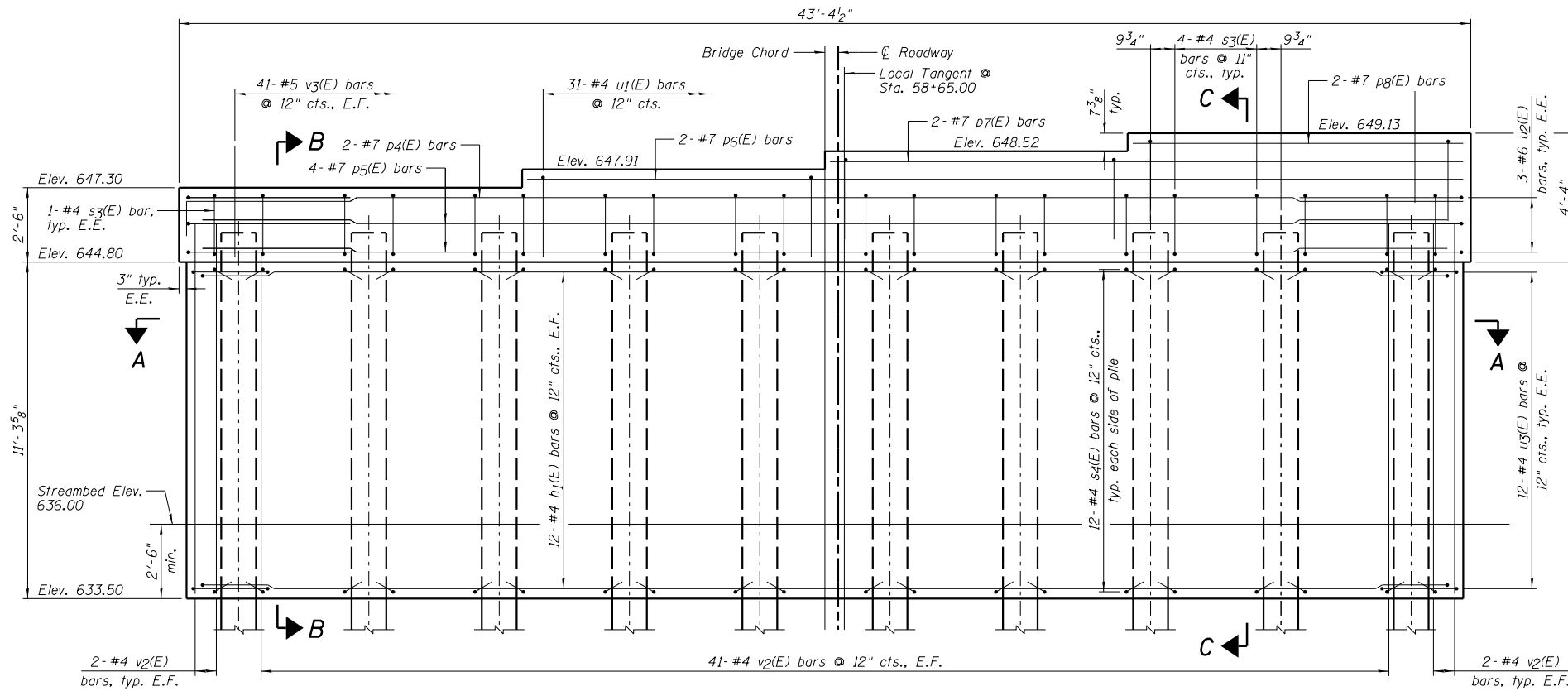
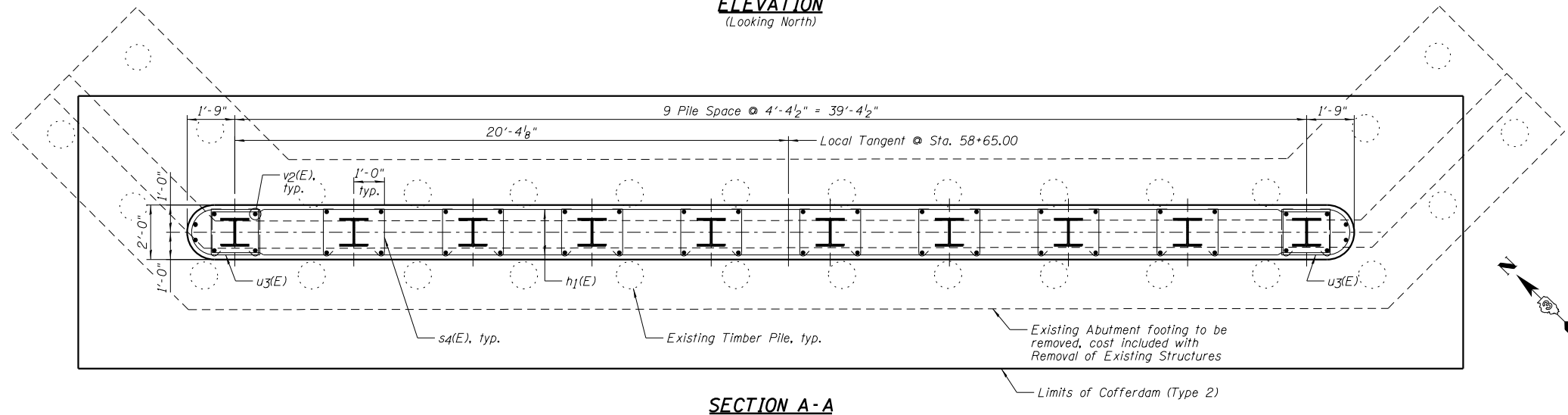


TOP PLAN



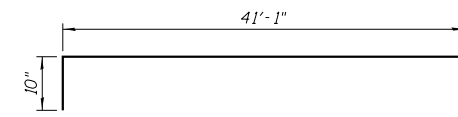
ELEVATION
(Looking North)



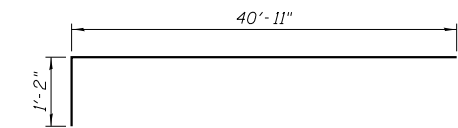
SECTION A-A

PIER NO. 2 BILL OF MATERIAL

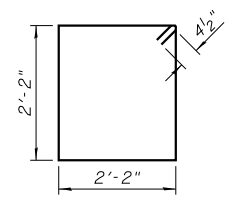
Bar	No.	Size	Length	Shape
h1(E)	12	#4	42'-9"	[Diagram]
p4(E)	2	#7	42'-1"	[Diagram]
p5(E)	4	#7	40'-11"	[Diagram]
p6(E)	2	#7	30'-3"	[Diagram]
p7(E)	2	#7	20'-1"	[Diagram]
p8(E)	2	#7	9'-11"	[Diagram]
s3(E)	38	#4	9'-5"	[Diagram]
s4(E)	240	#4	2'-9"	[Diagram]
u1(E)	31	#4	7'-8"	[Diagram]
u2(E)	6	#6	12'-5"	[Diagram]
u3(E)	24	#4	7'-5"	[Diagram]
v2(E)	90	#4	12'-5"	[Diagram]
v3(E)	82	#5	3'-9"	[Diagram]
Item	Unit	Quantity		
Cofferdam Excavation	Cu. Yd.	104		
Cofferdam (Type 2) (Location - 2)	Each	1		
Concrete Structures	Cu. Yd.	49.1		
Seal Coat Concrete	Cu. Yd.	56.5		
Reinforcement Bars, Epoxy Coated	Pound	3,230		
Furnishing Steel Piles HP12x63	Foot	405		
Driving Piles	Foot	405		
Test Pile Steel HP12x63	Each	1		



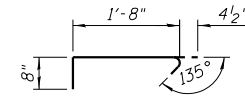
h1(E) BAR



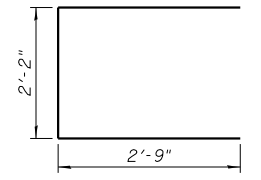
p4(E) BAR



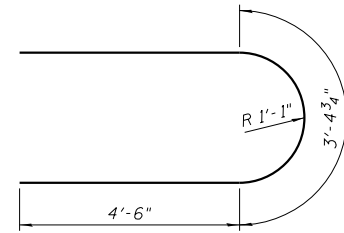
s3(E) BAR



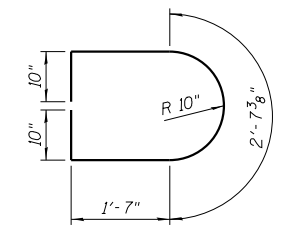
s4(E) BAR



u1(E) BAR



u2(E) BAR



u3(E) BAR

PILE DATA:

Pile Type and Size	*Steel-HP 12x63 with 3/4" End Plate
Nominal Required Bearing	474 kips
Factored Resistance Available	240 kips
Estimated Pile Length	45 Feet
Number of Production Piles	9
Number of Test Piles	1

*See weld detail on Sheet B15.

NOTES:

- 1.) Pour steps monolithically with cap.
- 2.) E.F. Denotes Each Face and E.E. Denotes Each End.
- 3.) See Sheet B14 for Sections B-B and C-C.