



Page 1 of 2

Date 1/2/80

SECTION (113 BR-1)BR LOCATION SW 1/4 of NE 1/4, SEC. 24 TWP. 28N. RNG. 5E. 3rd PM

COUNTY	Livingston	DRILLING METHOD	Hollow Stem Auger	HAMMER TYPE
--------	------------	-----------------	-------------------	-------------

STRUCT. NO.	053-0070 (Exist.)	D E P T H	B L O W S	U C S	M O I S T	Surface Water Elev.	638.96	ft	D E P T H	B L O W S	U C S	M O I S T
Station	58+65					Stream Bed Elev.		ft				
BORING NO.	1 (N.E. Quad.)	T H	Qu	(tsf)	(%)	Groundwater Elev.:			T H	Qu	(tsf)	(%)
Station	59+00					First Encounter		ft				
Offset	14.00 ft L					Upon Completion	626.0	ft				
Ground Surface Elev.	649.96					After		Hrs.				

The Unconfined Compressive Strength (UCS) Failure Mode is indicated by (B-Bulge, S-Shear, P-Penetrometer)
The SPT (N value) is the sum of the last two blow values in each sampling zone (AASHTO T206)

BBS, form 137 (Rev. 8-99)

Page 2 of 2

Date 1/2/80

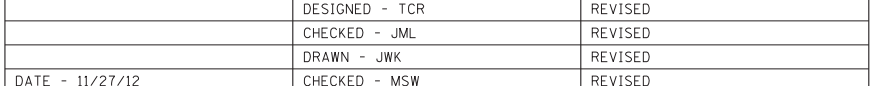
SECTION (113 BR-1)BR LOCATION SW 1/4 of NE 1/4, SEC. 24, TWP. 28N, RNG. 5E, 3rd PM

COUNTY	Livingston	DRILLING METHOD	Hollow Stem Auger	HAMMER TYPE
--------	------------	-----------------	-------------------	-------------

STRUCT. NO.	053-0070 (Exist.)	D E P T H	B L O C K	U C S	M O I S T	Surface Water Elev.	638.96	ft
Station	053-0-91 (Prop.)					Stream Bed Elev.		ft
	88+65							
BORING NO.	1 (N.E. Quad.)					Groundwater Elev.:		
Station	59+00		First Encounter		ft			
Offset	14.00ft Lt.		Upon Completion	626.0	ft			
Ground Surface Elev.	649.96	(ft)	(6")	(tsf)	(%)	After	Hrs.	ft

The Unconfined Compressive Strength (UCS) Failure Mode is indicated by (B-Bulge, S-Shear, P-Penetrometer)
The SPT (N value) is the sum of the last two blow values in each sampling zone (AASHTO T206)

BBS, form 137 (Rev. 8-99)



SOIL BORING LOGS
STRUCTURE NO. 053-0191

SHEET NO. B16 OF 17 SHEETS

F.A.P. RTE.	SECTION	COUNTY	TOTAL SHEETS	SHEET NO.
681	((113 BR)BR & ((113 BR-1)BR	LIVINGSTON	123	104
		CONTRACT NO. 66832		
ILLINOIS		FED. AID PROJECT		

ILLINOIS	FED. AID PROJECT
----------	------------------