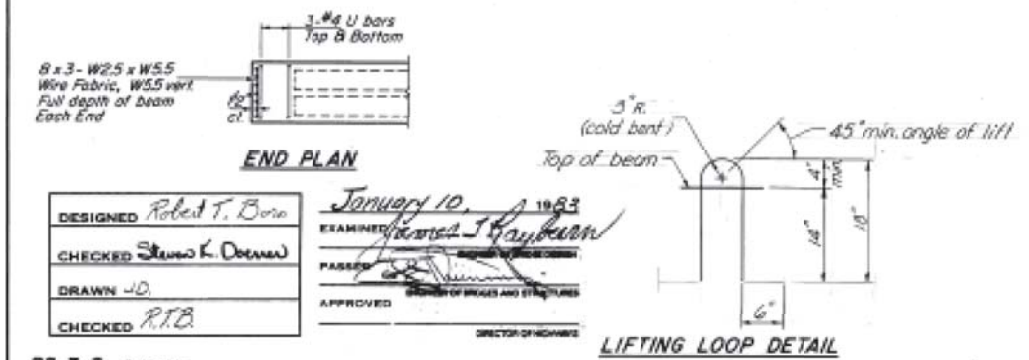
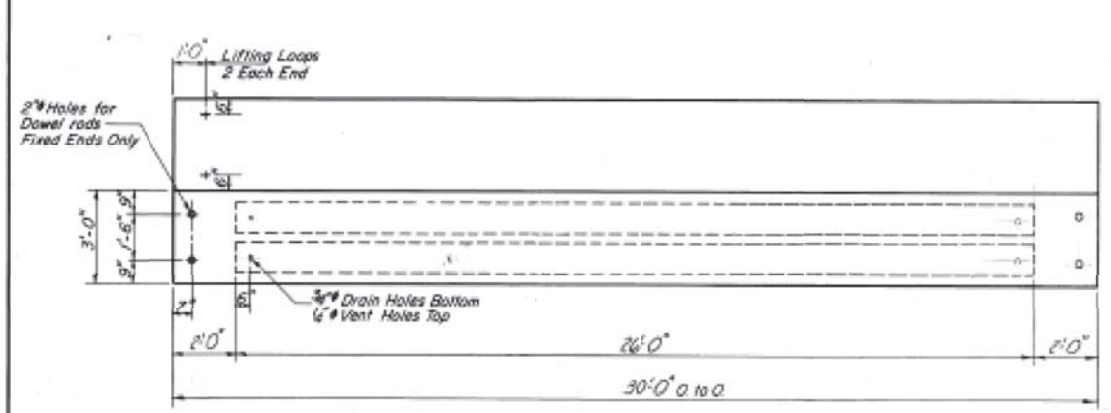
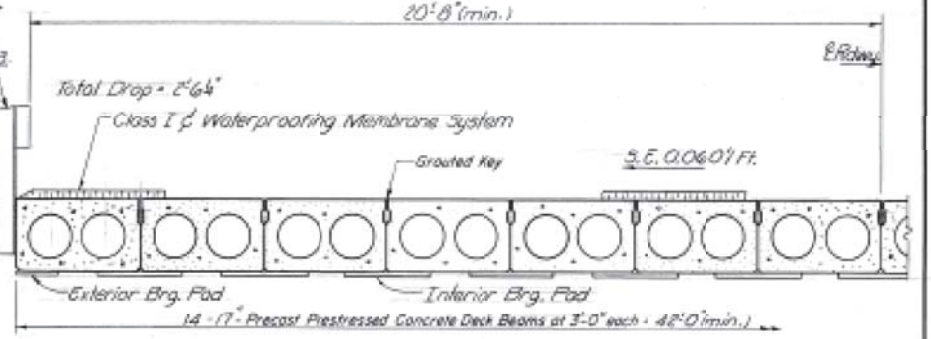
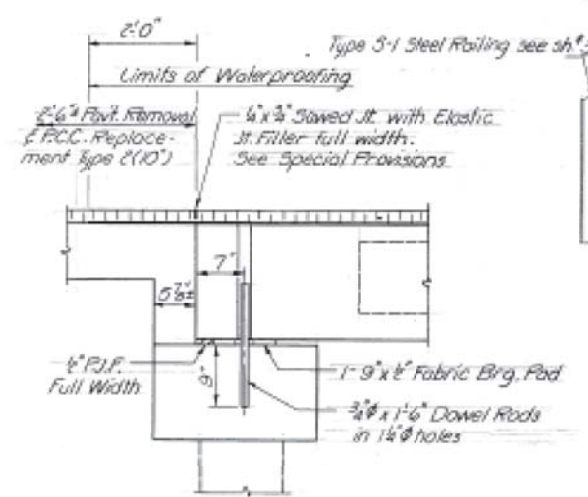
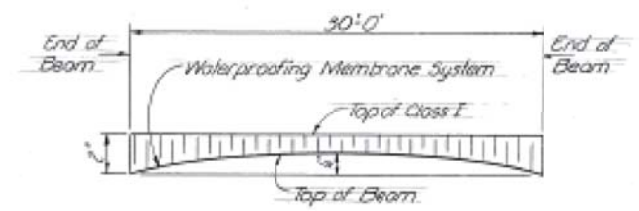
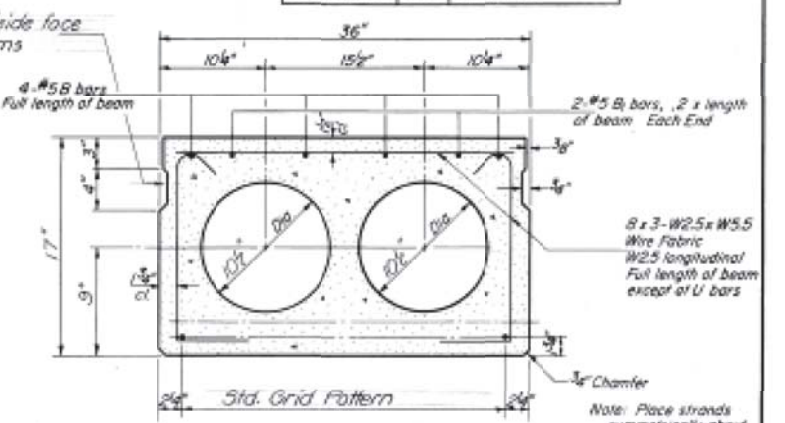
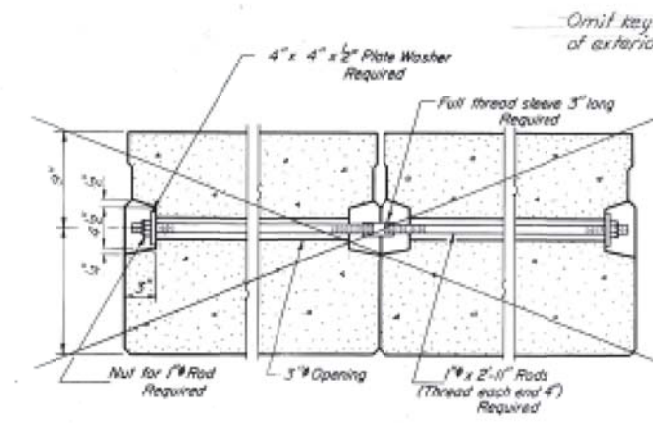
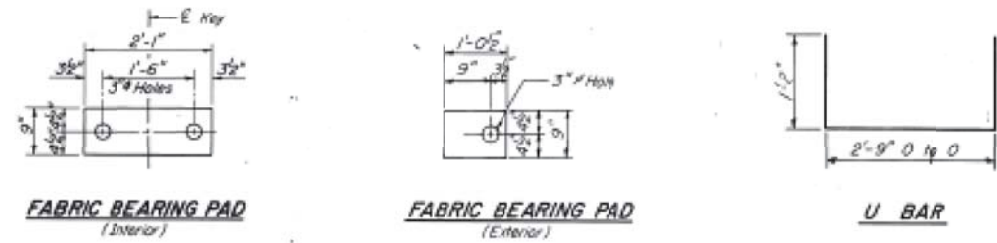


STATE OF ILLINOIS  
DEPARTMENT OF TRANSPORTATION

PROJECT NO.	SECTION	COUNTY	SHEET NO.	TOTAL SHEETS
681	(113 BR-1)	LIVINGSTON	25	26
SHEET NO. 2				5 SHEETS



DESIGNED Robert T. Bora  
CHECKED Steven K. Deenan  
DRAWN J.D.  
CHECKED R.T.B.

EXAMINED *[Signature]* January 10, 1983  
PASSED *[Signature]*  
APPROVED *[Signature]*

**NOTES**

Prestressing steel shall be non-galvanized high strength, stress-relieved 7-wire strand, Grade 270. The nominal diameter shall be 1/2" and the nominal cross-sectional area shall be 0.153 sq. in. Lifting loops shall be 1/2" diameter, 5 x 25 class wire rope with fiber core and shall have a minimum ultimate tensile strength of 7,000 lbs. or 2 - 1/2" - 270 ksi strands, as shown.

Dowel Rods to be grouted after beams are in place and allowed to cure (min. 24 hrs) prior to grouting the shear keys.

Reinforcement bars shall conform to AASHTO M-31 or M-53, Grade 60. The bearing seat surfaces shall be adjusted by shimming to assure firm and even bearing. Two 1/8" fabric adjusting shims of the dimensions of the Exterior Bearing Pad shall be provided for each bearing.

Keyway surfaces shall be cleaned to remove form oil or other bond breaking material prior to shipment of the beams. Cleaning shall be done by sandblasting the keyway areas between top of the beam and the bottom edge of the key.

**BILL OF MATERIAL**

Bar	No	Size	Length	Shape
Precast Prestressed Concrete Deck Beams (17')		Sq Ft	126.0	

P.P.C. DECK BEAMS  
F.A. RT. 681 SEC. 113BR-1  
LIVINGSTON COUNTY  
STA. 58+65.50