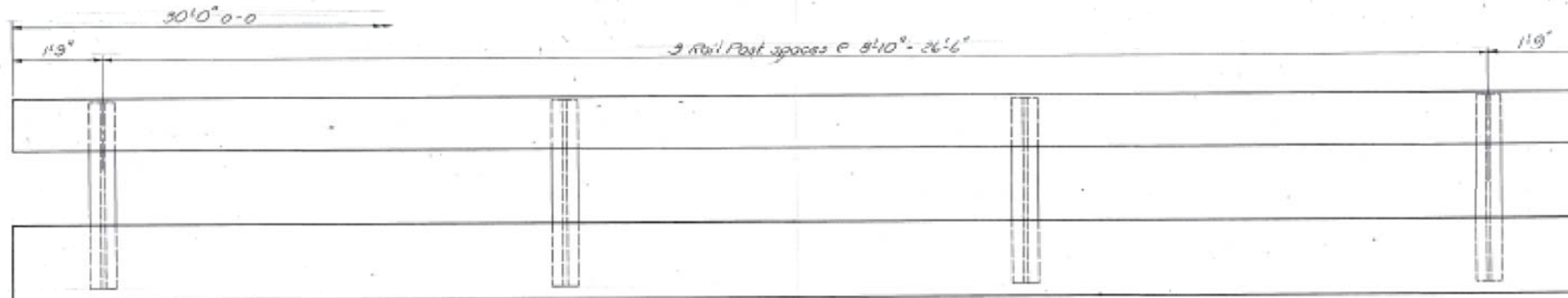
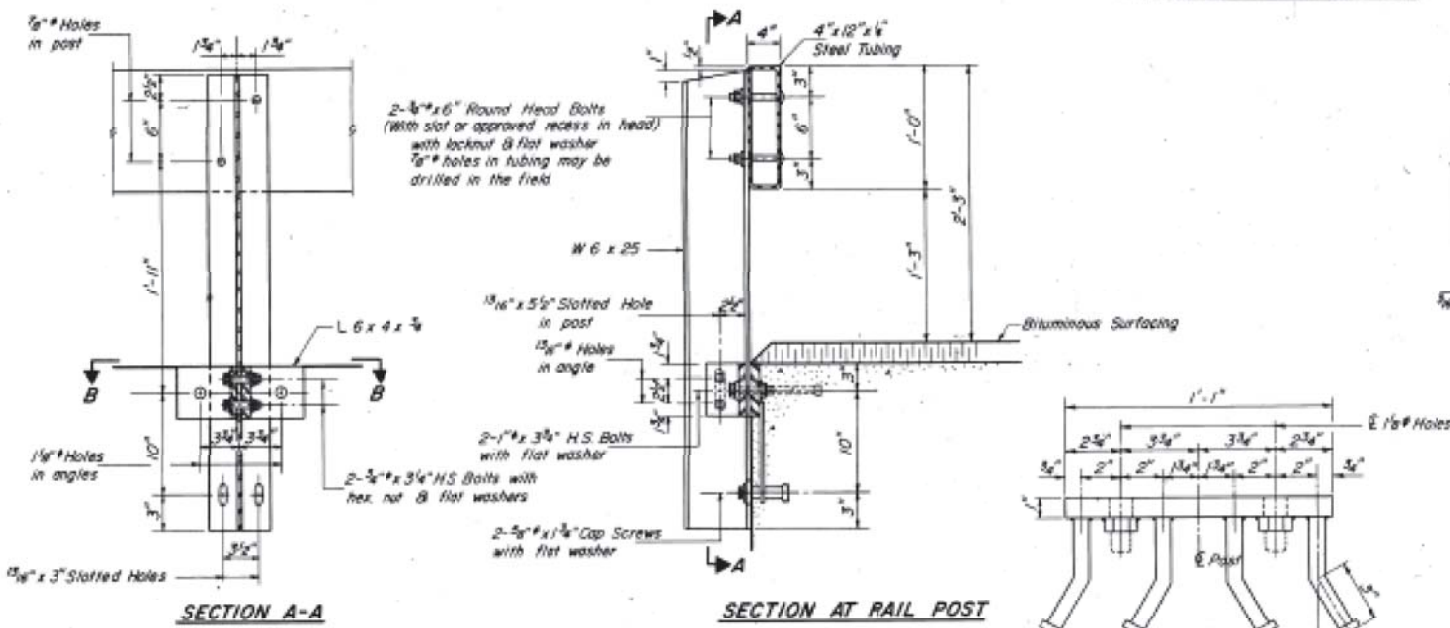


STATE OF ILLINOIS
DEPARTMENT OF TRANSPORTATION

PROJECT NO.	SECTION	SHEET	TOTAL SHEETS	SHEET NO.
681	113BR1	LIVINGSTON	25	15
SHEET NO. 3				
5 SHEETS				

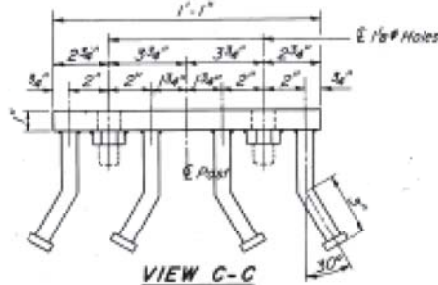


INSIDE ELEVATION

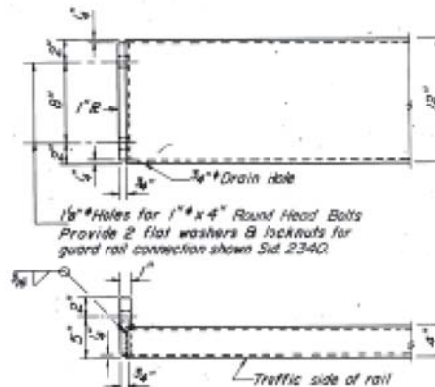


SECTION A-A

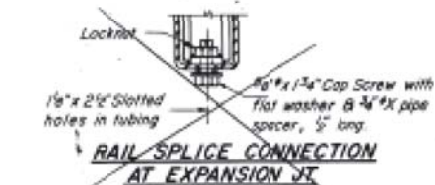
SECTION AT RAIL POST



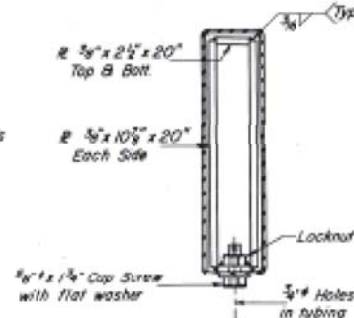
VIEW C-C



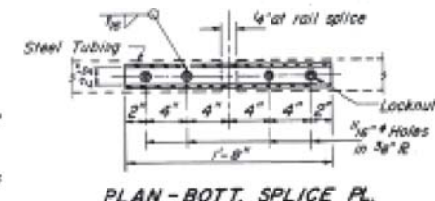
END OF RAIL DETAILS



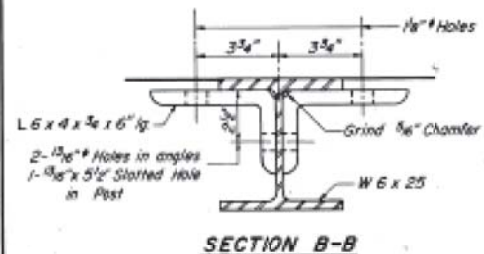
RAIL SPLICE CONNECTION AT EXPANSION JT



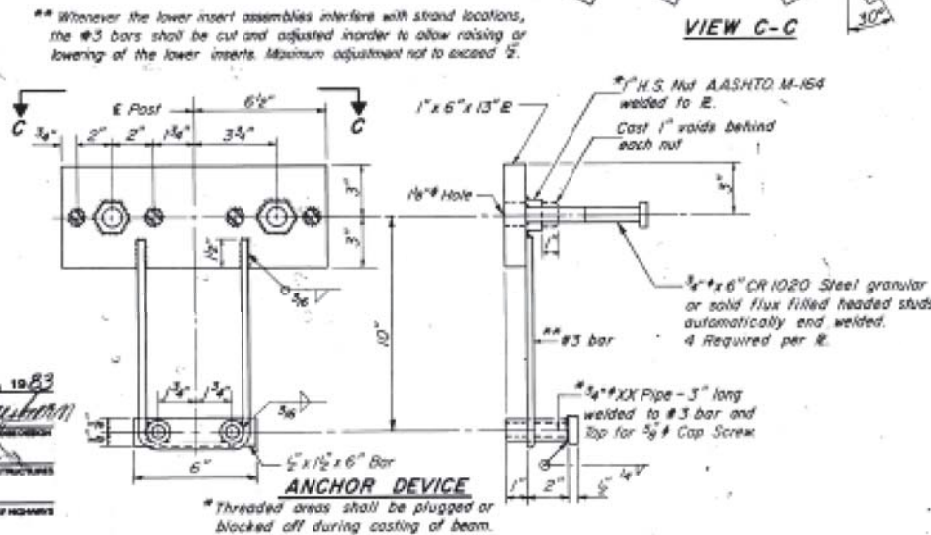
SECTION AT RAIL SPLICE



PLAN - BOT. SPLICE PL. TYPICAL



SECTION B-B



ANCHOR DEVICE

NOTES

- Follow structural steel tubing shall conform to the requirements of A.S.T.M. designation A-500 Grade B Structural Steel Tubing.
- All other steel shapes and plates shall conform to the requirements of A.A.S.H.T.O. M-103 except posts and angles shall conform to A.A.S.H.T.O. M-223, Grade 50.
- Bolts, cap screws, and nuts shall conform to the requirement of A.S.T.M. designation A-307 except for high strength bolts, nuts and washers noted which shall conform to A.A.S.H.T.O. M-164.
- All bolts, nuts, cap screws, washers and lock washers shall be galvanized in accordance with A.A.S.H.T.O. M-232.
- All posts, railing, rail splices, anchor devices and angles shall be galvanized after shop fabrication in accordance with A.A.S.H.T.O. M-111 and ASTM A-385. Galvanized rail shall not be painted.
- Railing shall be in accordance with Section 508 of the Standard Specifications, except as noted, and shall be paid for at the contract unit price per linear foot for STEEL RAILING, TYPE S-1.
- All field drilled holes shall be coated with an approved zinc rich paint before erection.
- The lower portion of the post flange in contact with concrete shall receive two coats of asphalt paint conforming to Section 714.08 Type B or place 1/2" fabric bearing pad between the post and concrete.
- The 3/4" high strength bolts used to connect the 6 x 4 x 1/2 angles to the post shall be tightened in accordance with Article 507.04(g)(3) of the Standard Specifications. The 1" high strength bolts connecting the angles to the concrete shall be tightened to a snug fit and given an additional 1/4 turn. The 3/4" cap screws in bottom of posts shall be tightened to a snug fit only.

BILL OF MATERIAL

Item	Unit	Quantity
Steel Railing, Type S-1	Lin. Ft.	60

TYPE S-1
STEEL RAILING
FA. RT. 681 SEC. 113BR-1
LIVINGSTON COUNTY
STA. 58+65.50

DESIGNED Robert T. Bone
CHECKED Steven D. Owen
DRAWN J.D.
CHECKED R.T.B.
EXAMINED James J. Neumann
APPROVED
DIRECTOR OF HIGHWAYS

R-23A 8-30-80 (10'-9" Maximum Post Spacing)

FILE NAME -	USER NAME - Schwenger	DESIGNED -	REVISED -
ca:\pwwork\pwwork\schwenger\dms31786\0366832-sht-existing-bridge-plans.dgn		DRAWN -	REVISED -
		CHECKED -	REVISED -
		DATE -	REVISED -

STATE OF ILLINOIS
DEPARTMENT OF TRANSPORTATION

EXISTING BRIDGE PLANS
FOR INFORMATION ONLY

SCALE: SHEET NO. OF SHEETS STA. TO STA.

F.A.P. RTE.	SECTION	COUNTY	TOTAL SHEETS	SHEET NO.
681	(113 BR1BR & 113 BR-1)BR	LIVINGSTON	123	108
CONTRACT NO. 66832				
ILLINOIS FED. AID PROJECT				