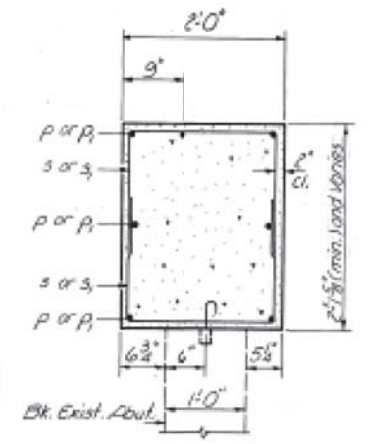
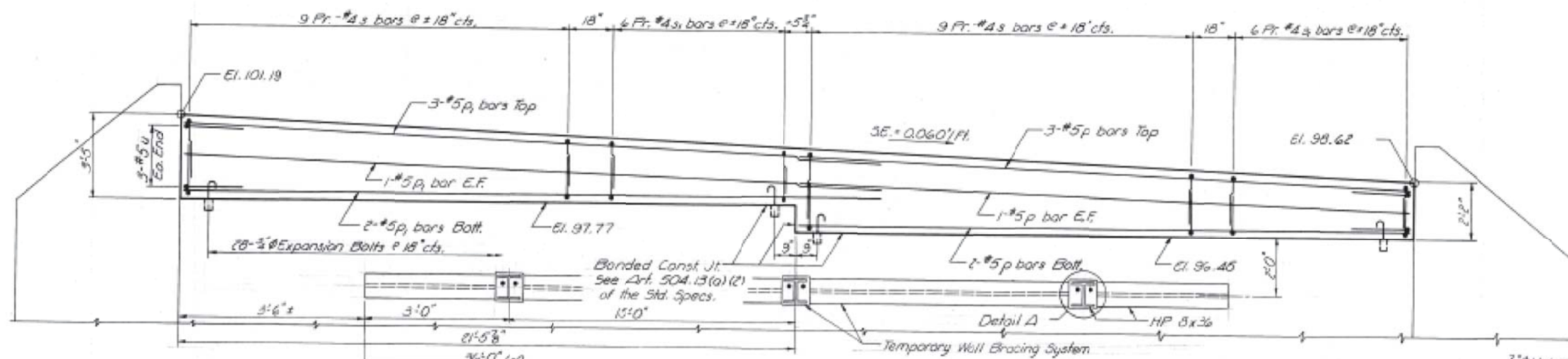


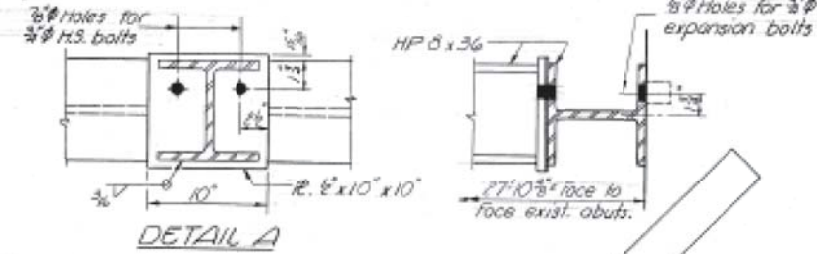
STATE OF ILLINOIS  
DEPARTMENT OF TRANSPORTATION

DATE	PROJECT	SHEET	TOTAL SHEETS	SHEET NO.
1/13/04	LIVINGSTON	25	24	5 SHEETS

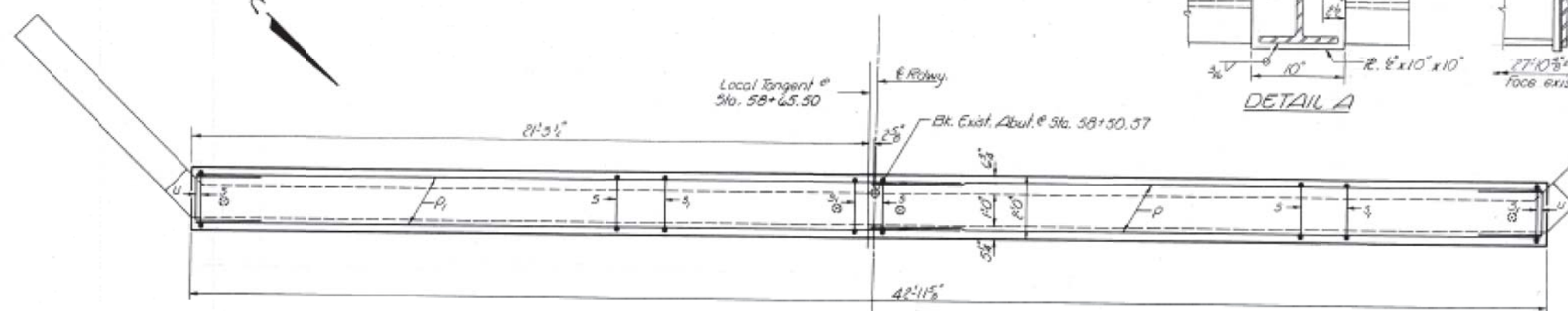


ELEVATION

SEC. THRU ABUT.

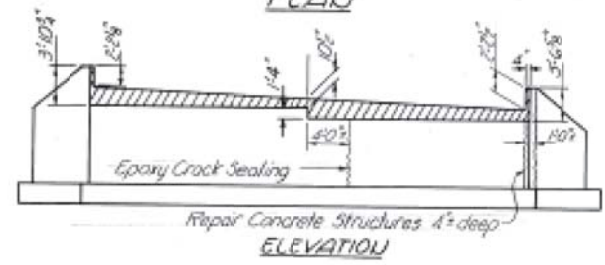


DETAIL A



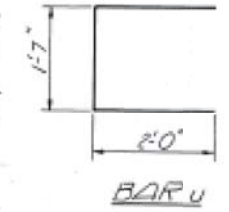
PLAN

Note: Hatched area indicates Concrete Removal. Reinforcement extending into removed area shall be cleaned and incorporated into the new construction.

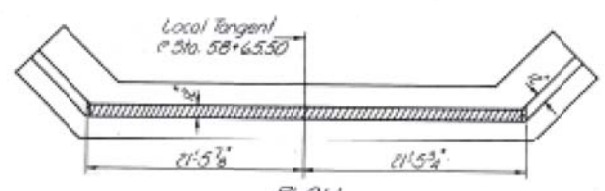


ELEVATION

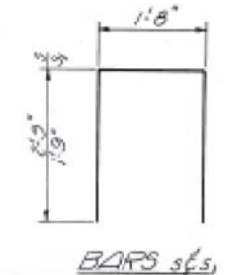
**TEMPORARY WALL BRACING SYSTEM**  
Before any removal of the existing structure the bracing system shall be completely in place. Connections shall be approved by the Engineer. Shim plates shall be used between the I-plate and the whaler to insure full contact. After completion of the new superstructure the bracing system shall be removed. No paint required.



BAR U



PLAN  
CONCRETE REMOVAL



BAR S

**BILL OF MATERIAL**

Bar	Qty	Size	Length	Shape
P	7	#5	21'-0"	—
P1	7	#5	23'-0"	—
B	36	#4	6'-2"	□
B1	24	#4	5'-2"	□
U	6	#5	5'-7"	C
Class X Concrete		Cu Yds.	8.9	
Reinforcement Bars		Lbs.	390	
Concrete Formwork		Cu Yds.	2.5	
Expansion Bolts 3/4"		Each	10	

**SOUTH ABUTMENT**  
RD. RT. 681 SEC. 113 BR-1  
LIVINGSTON COUNTY  
STA. 58+65.50

DESIGNED: Robert B. Bore  
CHECKED: Steven L. Overman  
DRAWN: J.D.  
CHECKED: R.T.B.  
EXAMINED: James J. Kuylenstierna  
PASSED: [Signature]  
APPROVED: [Signature]

January 10, 1983