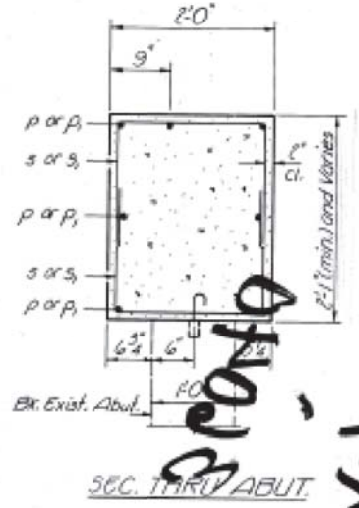
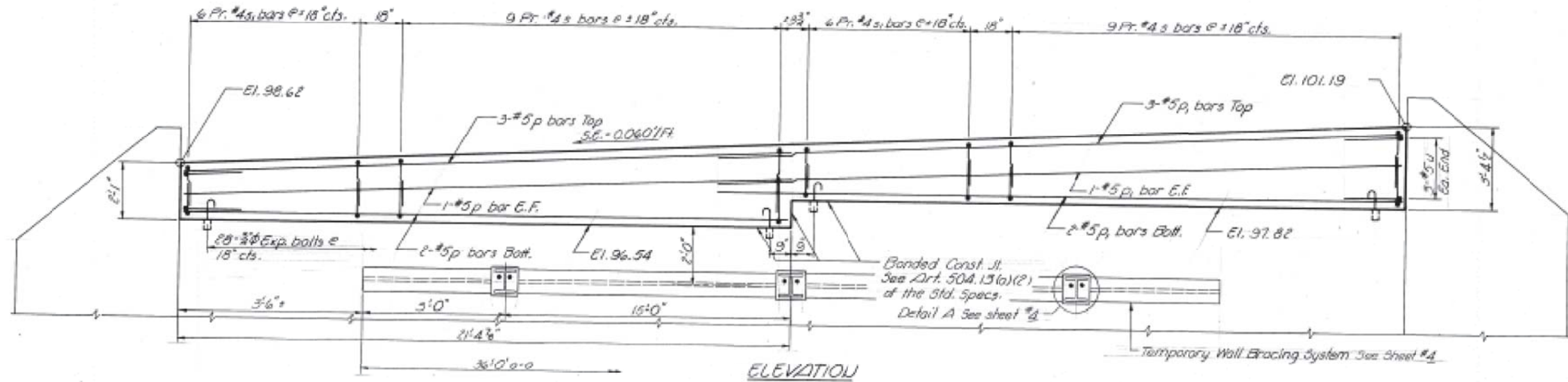


STATE OF ILLINOIS
DEPARTMENT OF TRANSPORTATION

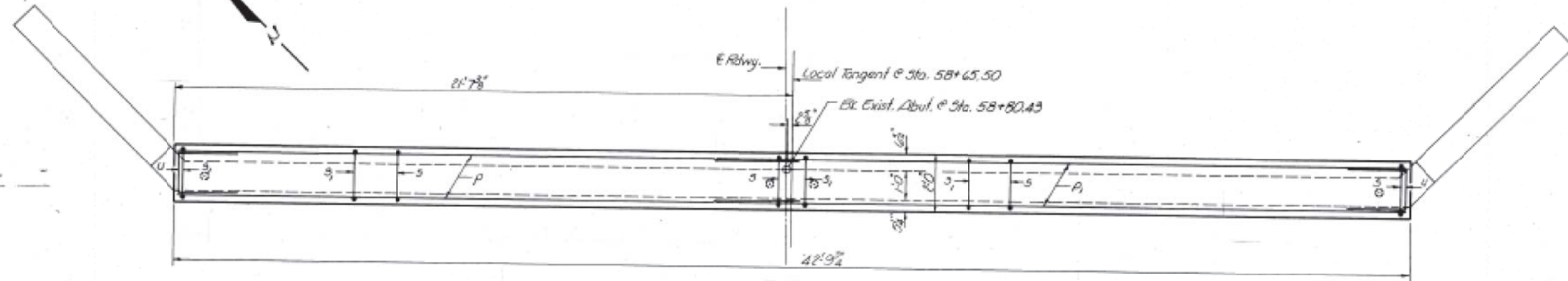
PROJECT NO.	SECTION	SHEET NO.	TOTAL SHEETS
113 BR-1	LIVINGSTON CO	25	25

SHEET NO. 5
5 SHEETS



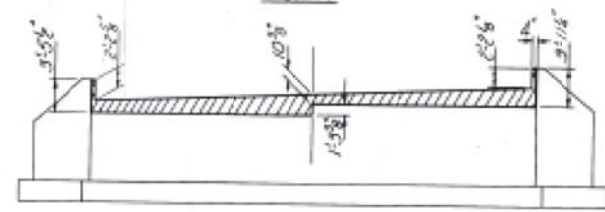
SEC. 113 BR-1 ABUT.

182-AB
 NORTH ABUT
 151-4

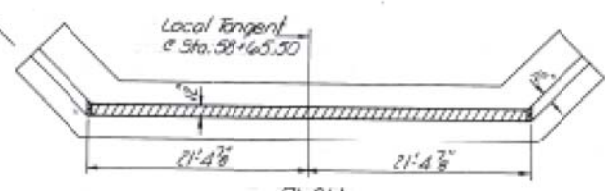


PLAN

Note:
Hatched area indicates Concrete Removal. Reinforcement extending into removed area shall be cleaned and incorporated into the new construction.



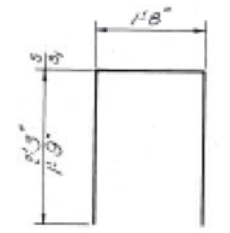
ELEVATION



CONCRETE REMOVAL



BAR U



BAR S

BILL OF MATERIAL

Bar	Qty	Size	Length	Shape
P	7	#5	2'-0"	—
A	7	#5	2'-0"	—
S	36	#4	6'-2"	□
U	24	#4	5'-2"	□
U	6	#5	3'-7"	□
Class I Concrete				Cu. Yds. 8.7
Reinforcement Bars				Lbs. 590
Concrete Removal				Cu. Yds. 2.4
Expansion Bolts 3/8"				Each 28

NORTH ABUTMENT
F.D. RT. 681 SEC. 113 BR-1
LIVINGSTON COUNTY
STA. 58+65.50

DESIGNED: Robert T. Bore
CHECKED: Steven K. Overman
DRAWN: J.D.
CHECKED: R.T.B.

EXAMINED: January 10, 1983
APPROVED: [Signature]

FILE NAME:	USER NAME:	DESIGNED:	REVISED:
ct:\pw\work\p1dot\schwknrg\dms31786\0366832-sht-existing-bridge-plans.dgn	Schwknrg	Robert T. Bore	-
PLOT SCALE:	CHECKED:	DRAWN:	REVISED:
50.0000 / in.	Steven K. Overman	J.D.	-
PLOT DATE:	DATE:	CHECKED:	REVISED:
12/14/2012	-	R.T.B.	-

STATE OF ILLINOIS
DEPARTMENT OF TRANSPORTATION

EXISTING BRIDGE PLANS
FOR INFORMATION ONLY

SCALE: SHEET NO. OF SHEETS STA. TO STA.

F.A.P. RTE.	SECTION	COUNTY	TOTAL SHEETS	SHEET NO.
681	(113 BR-1 & 113 BR-1)BR	LIVINGSTON	123	110
				CONTRACT NO. 66832
ILLINOIS FED. AID PROJECT				