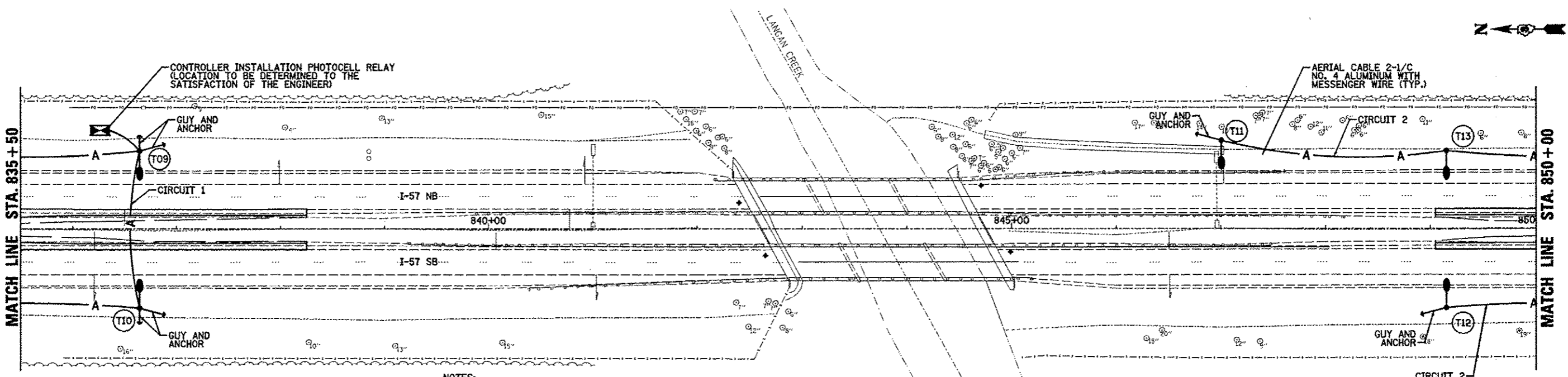


**LIGHTING LEGEND**

- PROPOSED TEMPORARY AERIAL CABLE, 2-1/2 NO. 4 ALUMINUM WITH MESSENGER WIRE
- PROPOSED TEMPORARY LIGHTING UNIT, 55 FOOT WOOD POLE, CLASS 3 WITH 250W HPS MULTI MOUNT LUMINAIRE
- PROPOSED TEMPORARY LIGHTING CONTROLLER AND ELECTRICAL SERVICE 30A, 240V, 1 PHASE, AND 3 WIRE



LEFT SIDE LIGHTS		
POLE NO.	STATION	OFFSET
T01	828+05.00	75.00'
T03	830+20.00	75.00'
T05	832+35.00	75.00'
T07	834+50.00	75.00'
T09	836+65.00	75.00'
T11	847+01.00	85.00'
T13	849+16.00	75.00'

RIGHT SIDE LIGHTS		
POLE NO.	STATION	OFFSET
T02	828+05.00	77.00'
T04	830+20.00	77.00'
T06	832+35.00	77.00'
T08	834+50.00	77.00'
T10	836+65.00	77.00'
T12	849+16.00	77.00'

**NOTES:**

1. POLE HEIGHT SHALL BE INCREASED AS NECESSARY TO MAINTAIN A MINIMUM CLEARANCE OF 20' OF AERIAL CABLE OVER ROADWAY AND 42' OF MOUNTING HEIGHT AT ALL TIMES.
2. GUYS AND ANCHORS ARE SHOWN AS AN EXAMPLE AND SHALL BE INSTALLED AS NECESSARY TO THE SATISFACTION OF THE ENGINEER.
3. TEMPORARY WOOD POLES SHALL BE SET BACK A MINIMUM OF 30 FEET FROM EXISTING EDGE OF PAVEMENT AND OUTSIDE THE CLEAR ZONE.
4. TRAFFIC MAY NOT USE MEDIAN CROSSOVERS UNTIL TEMPORARY LIGHTING IS OPERATIONAL.
5. CONTRACTOR SHALL INSTALL LIGHT POLES AT THE LOCATIONS INDICATED ON THE PLANS, MAINTAINING ADEQUATE CLEARANCE FROM UTILITY LINES. CONTRACTOR SHALL BE RESPONSIBLE TO VERIFY CLEARANCES PER THE NATIONAL ELECTRICAL SAFETY CODE AND/OR THE REQUIREMENTS OF THE UTILITY COMPANIES. THE LOCATION OF BURIED AND ABOVE GROUND UTILITIES SHOWN ARE APPROXIMATE AND ARE SHOWN FOR INFORMATION ONLY. REROUTING, DISCONNECTION, RELOCATION, PROTECTION, ETC., OF ANY UTILITIES MUST BE COORDINATED BETWEEN THE CONTRACTOR, UTILITY COMPANY, AND OWNER. THE CONTRACTOR SHALL VERIFY THE EXACT LOCATION OF ALL UNDERGROUND UTILITIES PRIOR TO CONSTRUCTION.
6. REFERENCE IDOT HIGHWAY STANDARD 825001, LIGHTING CONTROLLER POLE MOUNTED, 240V, FOR ELECTRICAL SERVICE INSTALLATION AND CONTROLLER WIRING DETAILS.
7. REFERENCE IDOT HIGHWAY STANDARD 830026, TEMPORARY ROADWAY LIGHTING, FOR LUMINAIRE MOUNTING DETAILS.



USER NAME: bhenrichs  
 PLOT SCALE: 1/8" = 10' IN.  
 PLOT DATE: 12/7/2012

DESIGNED: FM  
 DRAWN: SR  
 CHECKED: TP  
 DATE: 12/07/2012

REVISED: -  
 REVISED: -  
 REVISED: -  
 REVISED: -

STATE OF ILLINOIS  
 DEPARTMENT OF TRANSPORTATION

INTERSTATE 57 OVER LANGAN CREEK  
 STAGE I - LIGHTING

SCALE: 1" = 50' SHEET 1 OF 5 SHEETS STA. 820+96 TO STA. 850+00

F.A.I. RTE.	SECTION	COUNTY	TOTAL SHEETS	SHEET NO.
57	141BR(NB) & 38-1BR(SB)	IROQUOIS	138	34

CONTRACT NO. 66944  
 ILLINOIS FED. AID PROJECT

Rev.