

GENERAL NOTES

Fasteners shall be ASTM A 325 Type 1, mechanically galvanized bolts in painted areas and ASTM A 325 Type 3 in unpainted areas. Bolts 7/8 in. dia., holes 1 1/16 in. dia., unless otherwise noted.

Calculated weight of Structural Steel = 556,035 pounds (Grade 50W).

All structural steel shall be AASHTO M 270 Grade 50W unless noted otherwise.

No field welding is permitted except as specified in the contract documents.

Reinforcement bars designated (E) shall be epoxy coated.

Bearing seat surfaces shall be constructed or adjusted to the designated elevations within a tolerance of 1/16 inch (0.01 ft.). Adjustment shall be made either by grinding the surface or by shiming the bearings.

The existing structural steel coating contains lead. The Contractor shall take appropriate precautions to deal with the presence of lead on this project.

Structural steel shall only be painted for a distance equal to the depth of embedment into the concrete cap plus 3 in. Painted areas shall be primed in the shop with a Department approved zinc rich primer. Field painting will not be required.

Layout of slope protection system may be varied to suit ground conditions in the field as directed by the Engineer.

The embankment configuration shown shall be the minimum that must be placed and compacted prior to construction of the abutments.

Seal coat thickness design is based on the Estimated Water Surface Elevation (EWSE). Cofferdam design details and proposed changes in seal coat thickness shall be submitted to the Engineer for approval with the cofferdam design.

INDEX OF SHEETS

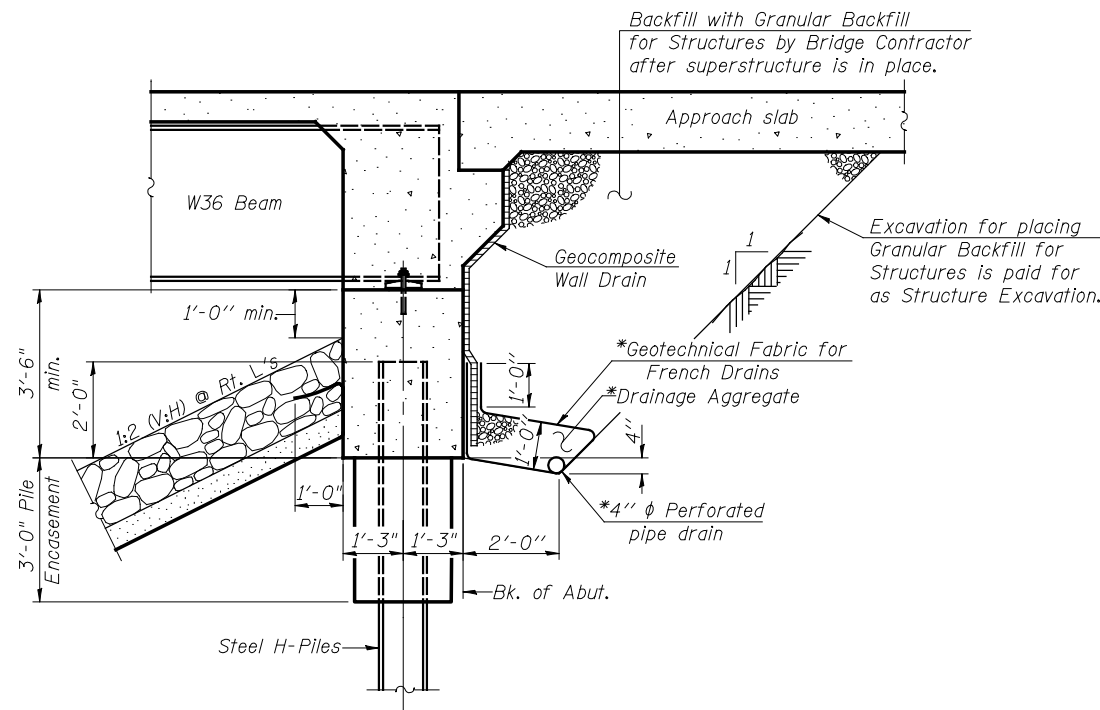
- 1 General Plan and Elevation
- 2 General Data
- 3 Substructure Layout
- 4 Stage Construction Details
- 5 Temporary Concrete Barrier for Stage Construction
- 6 Top of Slab Elevations
- 7-8 Top of Slab Elevations - Northbound
- 9-10 Top of Slab Elevations - Southbound
- 11 Top of North Approach Slab Elevations - Northbound
- 12 Top of South Approach Slab Elevations - Northbound
- 13 Top of North Approach Slab Elevations - Southbound
- 14 Top of South Approach Slab Elevations - Southbound
- 15 Superstructure
- 16 Superstructure Details
- 17 Diaphragm Details
- 18-19 Bridge Approach Slab Details
- 20 Framing Plan
- 21 Structural Steel Details
- 22 Bearing Details
- 23 North Abutment - Northbound
- 24 South Abutment - Northbound
- 25 North Abutment - Southbound
- 26 South Abutment - Southbound
- 27 Pier 1 - Northbound
- 28 Pier 2 - Northbound
- 29 Pier 1 - Southbound
- 30 Pier 2 - Southbound
- 31 HP Pile Details
- 32 Bar Splicer Assembly and Mechanical Splicer Details
- 33 Concrete Parapet Slipforming Option
- 34-38 Soil Boring Logs

TOTAL BILL OF MATERIAL

ITEM	UNIT	SUPER	SUB	TOTAL
Granular Backfill for Structures	CU YD		280	280
Stone Riprap, Class A4	SQ YD		1,005	1,005
Filter Fabric	SQ YD		1,005	1,005
Removal of Existing Structures No. 1	EACH			1
Removal of Existing Structures No. 2	EACH			1
Slope Wall Removal	SQ YD		1,257	1,257
Structure Excavation	CU YD		279	279
Cofferdam Excavation	CU YD		578	578
Cofferdam (Type 2) (Location-1)	EACH		1	1
Cofferdam (Type 2) (Location-2)	EACH		1	1
Cofferdam (Type 2) (Location-3)	EACH		1	1
Cofferdam (Type 2) (Location-4)	EACH		1	1
Floor Drains	EACH	52		52
Concrete Structures	CU YD		419.3	419.3
Concrete Superstructure	CU YD	933.8		933.8
Bridge Deck Grooving	SQ YD	2,336		2,336
Seal Coat Concrete	CU YD		354.8	354.8
Concrete Encasement	CU YD		9.6	9.6
Protective Coat	SQ YD	2,942		2,942
Furnishing and Erecting Structural Steel	L SUM	1		1
Stud Shear Connectors	EACH	12,558		12,558
Reinforcement Bars, Epoxy Coated	POUND	217,900	44,370	262,270
Bar Splicers	EACH	184		184
Furnishing Steel Piles HP12x74	FOOT		3,540	3,540
Driving Piles	FOOT		3,540	3,540
Test Pile Steel HP12x74	EACH		8	8
Name Plates	EACH	2		2
Anchor Bolts, 1"	EACH	112		112
Geocomposite Wall Drain	SQ YD	191		191
Pipe Underdrains For Structures 4"	FOOT	301		301

Removal of Existing Structures No. 1 refers to the removal of the existing Southbound Structure (SN 038-0015).

Removal of Existing Structures No. 2 refers to the removal of the existing Northbound Structure (SN 038-0016).



SECTION THRU INTEGRAL ABUTMENT
(Horiz. dim. @ Rt. L's)

*Included in the cost of Pipe Underdrains for Structures.

Note:
All drainage system components shall extend to 2'-0" from the end of each wingwall except an outlet pipe shall extend until intersecting with the side slopes. The pipes shall drain into concrete headwalls. (See Article 601.05 of the Standard Specifications and Highway Standard 601101).

STATION 843+65.09
BUILT 20__ BY
STATE OF ILLINOIS
F.A.P. RT. 57 SEC. 38-1BR
LOADING HL-93
STRUCTURE NO. 038-0216

NAME PLATE
See Std. 515001
Northbound Structure

STATION 844+01.46
BUILT 20__ BY
STATE OF ILLINOIS
F.A.P. RT. 57 SEC. 141BR
LOADING HL-93
STRUCTURE NO. 038-0215

NAME PLATE
See Std. 515001
Southbound Structure

**STATE OF ILLINOIS
DEPARTMENT OF TRANSPORTATION**

**GENERAL DATA
STRUCTURE NO. 038-0215 (S.B.) & 038-0216 (N.B.)**

F.A.I. RTE.	SECTION	COUNTY	TOTAL SHEETS	SHEET NO.
57	141 BR(SB) & 38-1 BR(NB)	IROQUOIS	138	40
CONTRACT NO. 66944				

SHEET NO. 2 OF 38 SHEETS

ILLINOIS FED. AID PROJECT

Wight

DESIGNED	BJM	REVISED	
CHECKED	MWS	REVISED	
DRAWN	MWS	REVISED	
PLOT DATE = 1/30/2013	CHECKED	BJM	REVISED