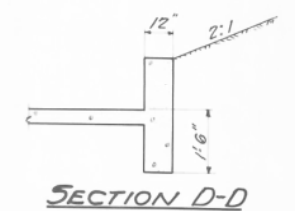
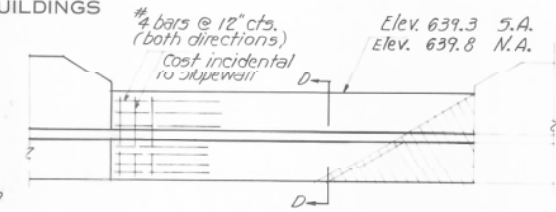
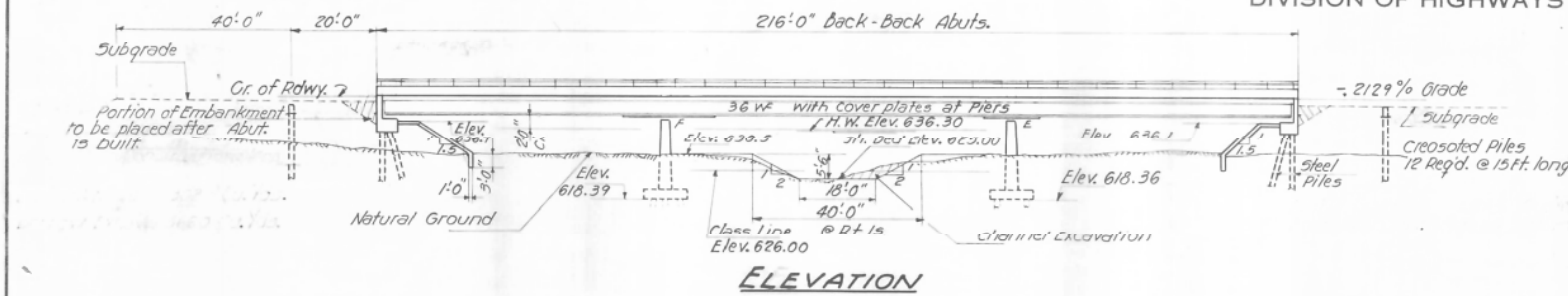


B.M. U.S.G.S. Mon. D-203 Elev. 642.49. 14' Rt.
 of Station 842+60
 Existing structure: 3 span I.B.M. concrete floor to
 remain for use on south bound Lane of F.A.I. 57

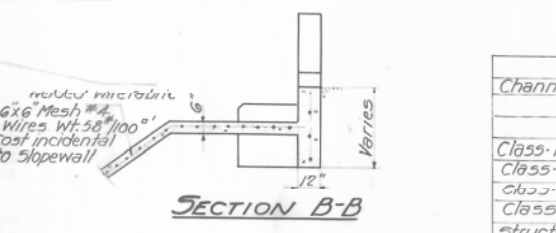
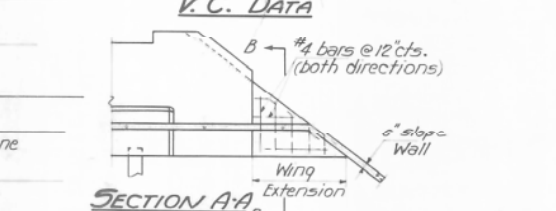
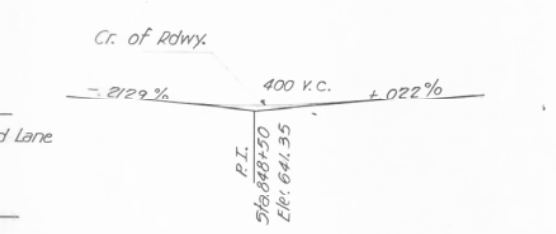
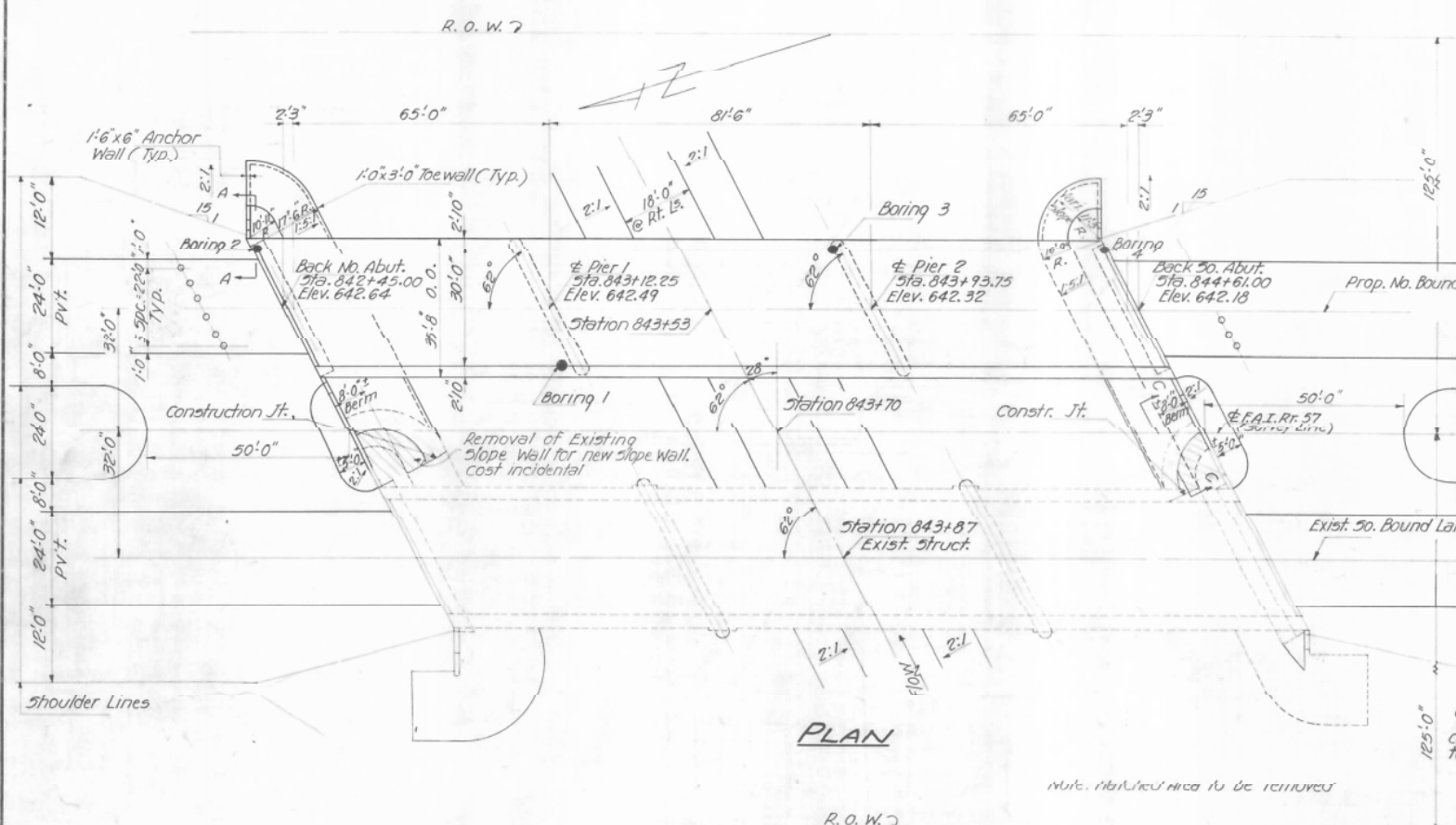
STATE OF ILLINOIS
 DEPARTMENT OF PUBLIC WORKS & BUILDINGS
 DIVISION OF HIGHWAYS

ROUTE NO.	SECTION	COUNTY	TOTAL SHEETS	SHEET NO.	SHEET NO. 1
157	46-38-1	Kankakee	154	54	10 SHEETS
FED. ROAD DIST. NO.	ILLINOIS	FED. AID PROJECT	I-57-6(62)299		



GENERAL NOTES

Class-X Concrete shall be used throughout except in Piers.
 Coarse aggregate which is to be used in rail posts must be free of chert, flint, limonite, lignite and soft sandstone.
 Class-A Concrete shall be used in Piers.
 The concrete floor slab shall be finished in accordance with Art. 51.19 of the Standard Specifications.
 Slope Wall shall be reinforced with welded wire fabric 6x6 mesh 4 wires weighing 58 Lbs. per 100 sq. Ft.
 Layout of Slope Wall may be varied to suit ground conditions in the field, as directed by the Engineer.
 All structural steel shall conform to the A.S.T.M. Specifications for Structural Steel A.5, A.M. Designation A-36.
 Rivets 3/4" open Holes 1/16" unless noted.
 All rollers, rockers, bearing plates, lead plates, pintles, and anchor bolts shall be fabricated and set in accordance with Art. 51.15 of the Standard Specifications and are included in quantity of structural steel. Estimated Weight: 8670 Lbs.
 Anchor Bolts shall be set before riveting diaphragms over supports.
 Except as otherwise provided all structural steel shall receive one shop coat of red lead paint and two field coats of aluminum paint. See Arts. 56.1 to 56.1 inclusive of the Standard Specifications.
 All paint shall be furnished and applied by the Contractor.
 The Contractor shall drive two test piles in permanent locations as directed by the Engineer before ordering remainder of Piles.
 One Steel Test Pile 8 BP 36 at the North Abutment and one Timber Test Pile at Pier 2



TOTAL BILL OF MATERIAL

ITEM	UNIT	SUPER.	SUB.	TOTAL
Channel Excavation	cu. Yds.		280	280
Class-A Excavation for Structures	cu. Yds.	210		210
Class-B Excavation for Structures	cu. Yds.		280	280
Class-A Concrete	cu. Yds.	170.7		170.7
Class-X Concrete	cu. Yds.	231.1	54.9	286.0
Structural Steel	Lbs.	231270		231270
Aluminum Handrail	lin. Ft.	432		432
Reinforcement Bars	Lbs.	50480	9260	59740
Untreated Piles	lin. Ft.		1022	1022
Creosoted Piles	lin. Ft.		180	180
Test Piles (Timber)	Each		1	1
Steel Piles 8 BP 36	lin. Ft.		490	490
Test Piles (Steel 8 BP 36)	Each		1	1
Metal Shoes	Each		54	54
Name Plates	Each		1	1
Slope Wall @"	sq. Yds.		580	580
Protective Coat	sq. Yds.	960		960

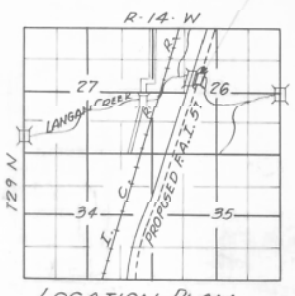
STATION 843+70(R)
 BUILT 196 BY
 STATE OF ILLINOIS
 F.A.I. RT. 57-SEC. 38-1B
 F.A. PROJ. I-57-6(62)
 LOADING 1120-516-44 & Alt.

WATERWAY INFORMATION

Drainage Area 56320 Acres
 Character--Level, Clay, Wooded & Cultivated
 Reg'd. Opening (50 yr. Flood) 1070 sq. Ft.
 Present Opening 1070 sq. Ft.
 Proposed Opening 627.1
 Ordinary Water Elev.

DESIGN STRESSES

f_c --- 1400 psi Super.
 f_c --- 75% 12" Flos.
 f_s --- 20000 psi Struc.
 f_s --- 20000 psi Struc.
 n --- 10



DESIGNED *Wally Perry*
 CHECKED *Morris E. Gamaden*
 DRAWN *W.P. Miller*
 CHECKED *Morris E. Gamaden*

EXAMINED *H.G. Baumann*
 PASSED *E. H. ...*
 APPROVED *R.H. ...*

**GENERAL PLAN & ELEVATION
 OVER LANGAN CREEK
 F.A. PROJECT I-57-6(62)299
 F.A.I. RT. 57-SEC. 38-1B
 IROQUOIS COUNTY
 STATION 843+70(?)**

Rev. 1-10-25 Elevation, replaced Metal Handrail of concrete post with pipe Al Handrail of same height. Removed 10-ton capacity of concrete floor slab. Total bill of material... Deleted Barrow Slab.



DESIGNED	REVISOR
CHECKED	REVISOR
DRAWN	REVISOR
CHECKED	REVISOR

STATE OF ILLINOIS
 DEPARTMENT OF TRANSPORTATION

EXISTING STRUCTURE PLANS
 STRUCTURE NO. 038-0216 (N.B.)

FOR INFORMATION ONLY

F.A.I. RTE.	SECTION	COUNTY	TOTAL SHEETS	SHEET NO.
57	141 BR(SB) & 38-1 BR(NB)	IROQUOIS	138	77
CONTRACT NO. 66944				

SHEET NO. 1 OF 19 SHEETS

ILLINOIS FED. AID PROJECT