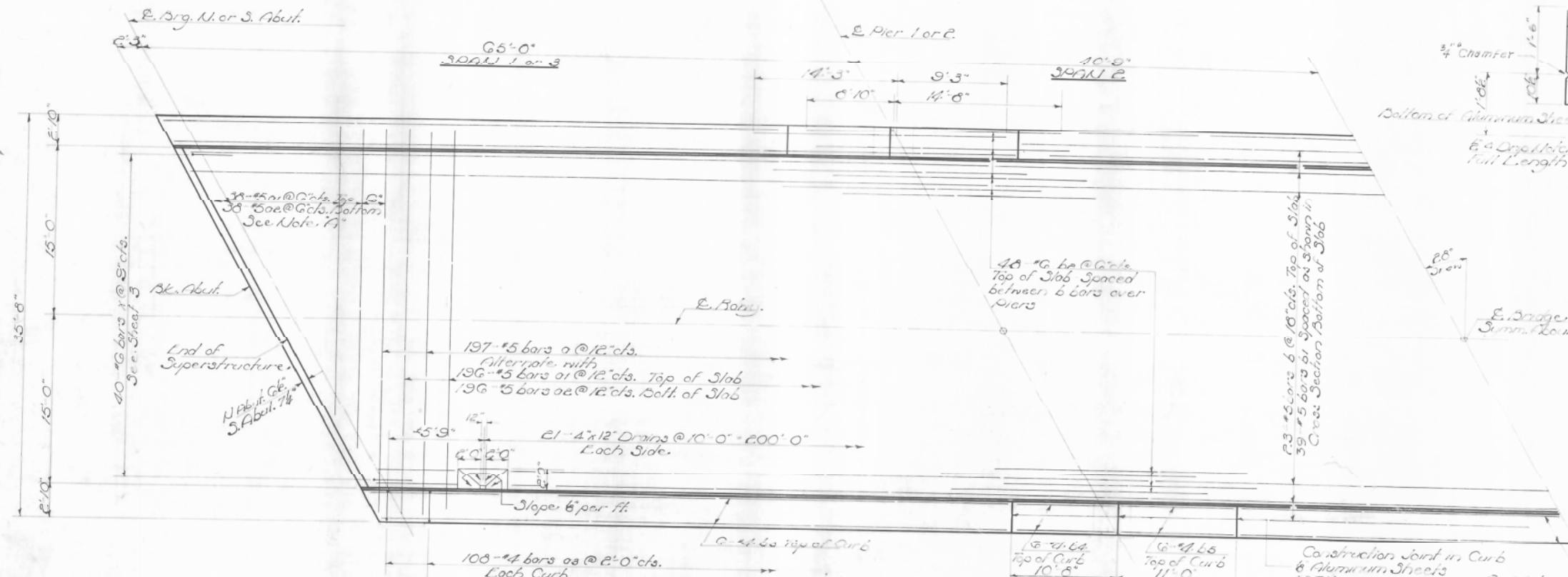
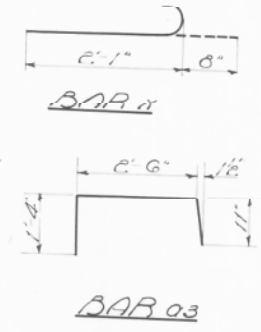


STATE OF ILLINOIS
DEPARTMENT OF PUBLIC WORKS & BUILDINGS
DIVISION OF HIGHWAYS

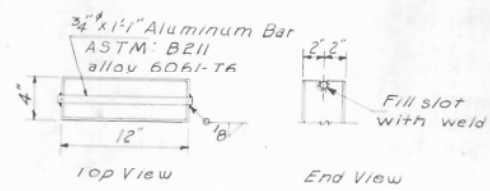
POSTS NO.	SECTION	COUNTY	TOTAL SHEETS	SHEET NO.	SHEET NO.
171	46-38-1	Kankakee	154	59	10 SHEETS
111	198-15	Iroquois			
ILLINOIS FED. AID PROJECT					



CURB DETAIL

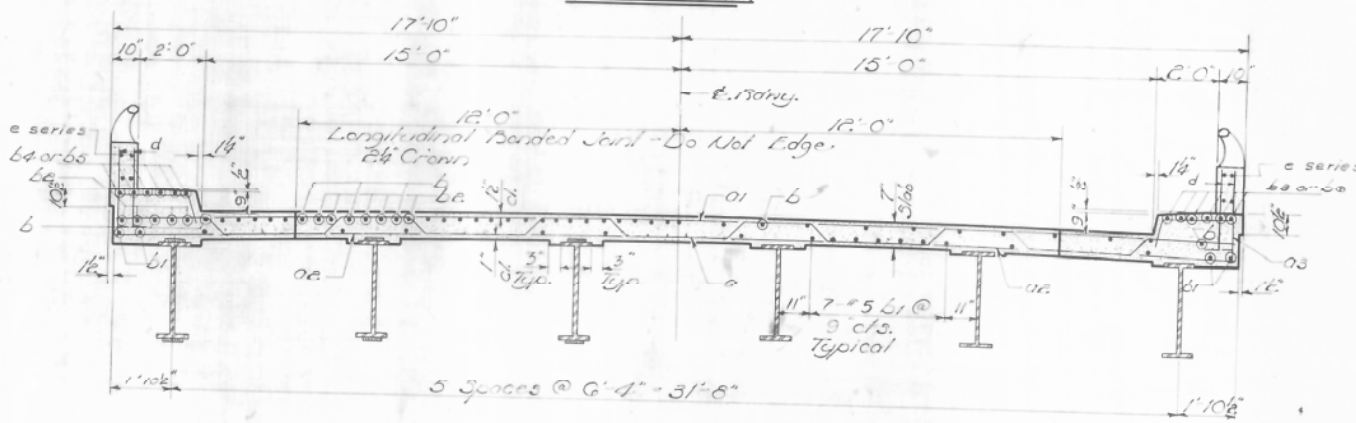


Note: 7"
Order all #5 or #6 bars full length.
Cut to fit when and use remainder
of bar in opposite end.



DETAIL - TOP OF DRAIN

HALF PLAN



Note: For spacing of #5 bars, see Sht 4

BAR LIST

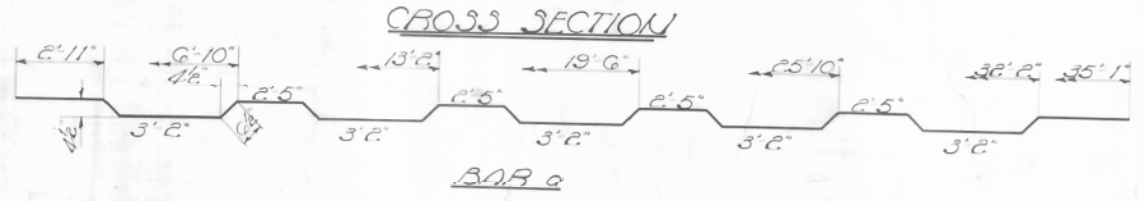
Bar No.	Size	Length	Shape
01	197 #5	36'9"	U
02	234 #5	35'0"	U
03	216 #4	4'9"	U
04	191 #5	31'9"	U
05	273 #5	31'9"	U
06	231 #6	23'6"	U
07	72 #4	19'9"	U
08	24 #4	10'6"	U
09	24 #4	10'9"	U
10	32 #4	20'6"	U
11	80 #6	2'9"	U

Class X Concrete, Cu. 2311
Reinforcement Bars L6, 50480
Structural Steel L6, 2311

* Quantity includes reinforcement bars listed on Sht 4.

SUPERSTRUCTURE
F.A.I. RT. 57-SEC. 38-15
IROQUOIS COUNTY
STD. 84.3 + 70(R)

DESIGNED	Walter Perry	EXAMINED	DEC 13 1961
CHECKED	Marie E. Hanada	APPROVED	R. L. Paulsen
DRAWN	W. J. Jacobs		
CHECKED	Marie E. Hanada		



CROSS SECTION

12/7/2012 4:51:45 AM 0380215.66944_001.LX02.dgn



DESIGNED	REVISOR
CHECKED	REVISOR
DRAWN	REVISOR
CHECKED	REVISOR
DESIGNED	REVISOR
CHECKED	REVISOR

STATE OF ILLINOIS
DEPARTMENT OF TRANSPORTATION

EXISTING STRUCTURE PLANS
STRUCTURE NO. 038-0216 (N.B.)

SHEET NO. 2 OF 19 SHEETS

FOR INFORMATION ONLY

F.A.I. RT.	SECTION	COUNTY	TOTAL SHEETS	SHEET NO.
57	141 BR(SB) & 38-1 BR(NB)	IROQUOIS	138	78
CONTRACT NO. 66944				
ILLINOIS FED. AID PROJECT				