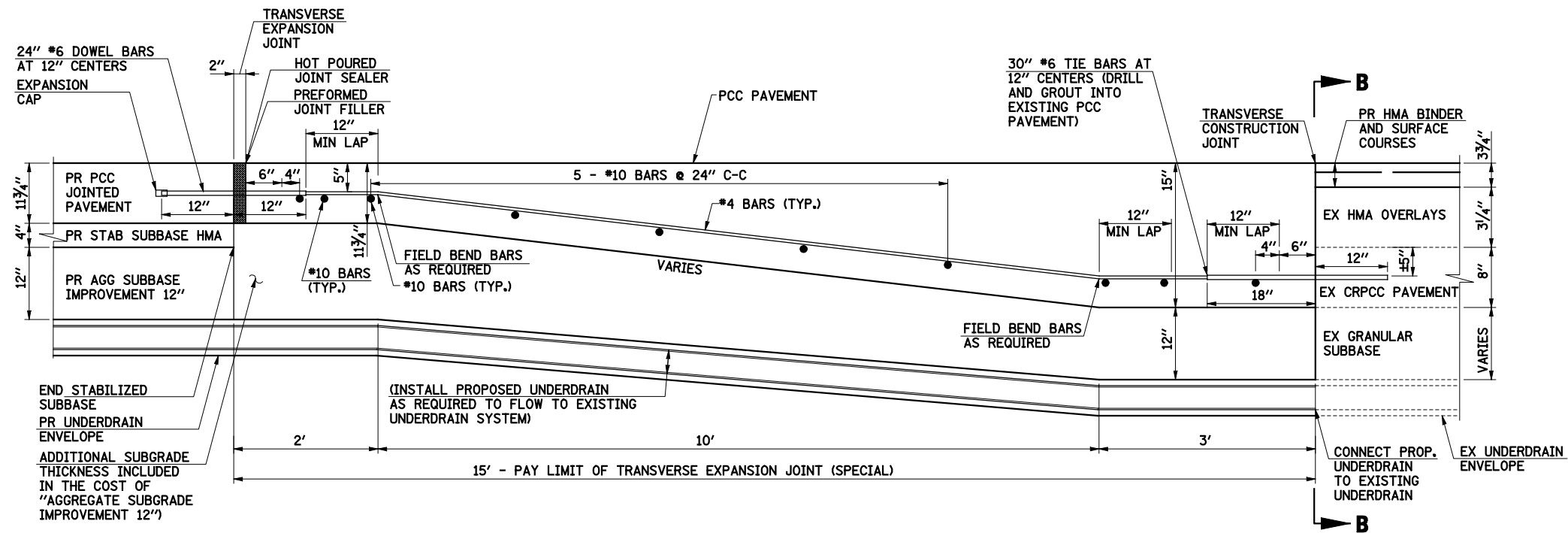
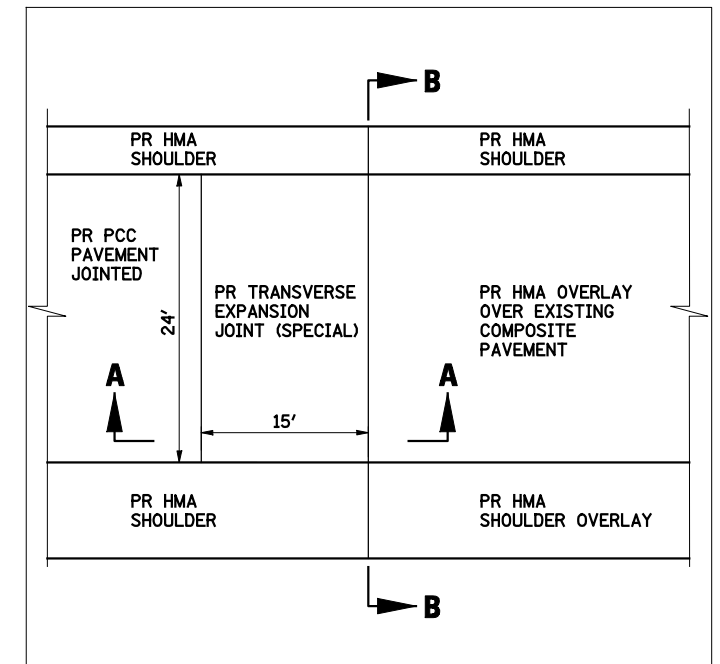


DATE	
BY	
REVISION	
NO.	
DATE	
BY	
REVISION	
NO.	
DATE	
BY	
REVISION	
NO.	

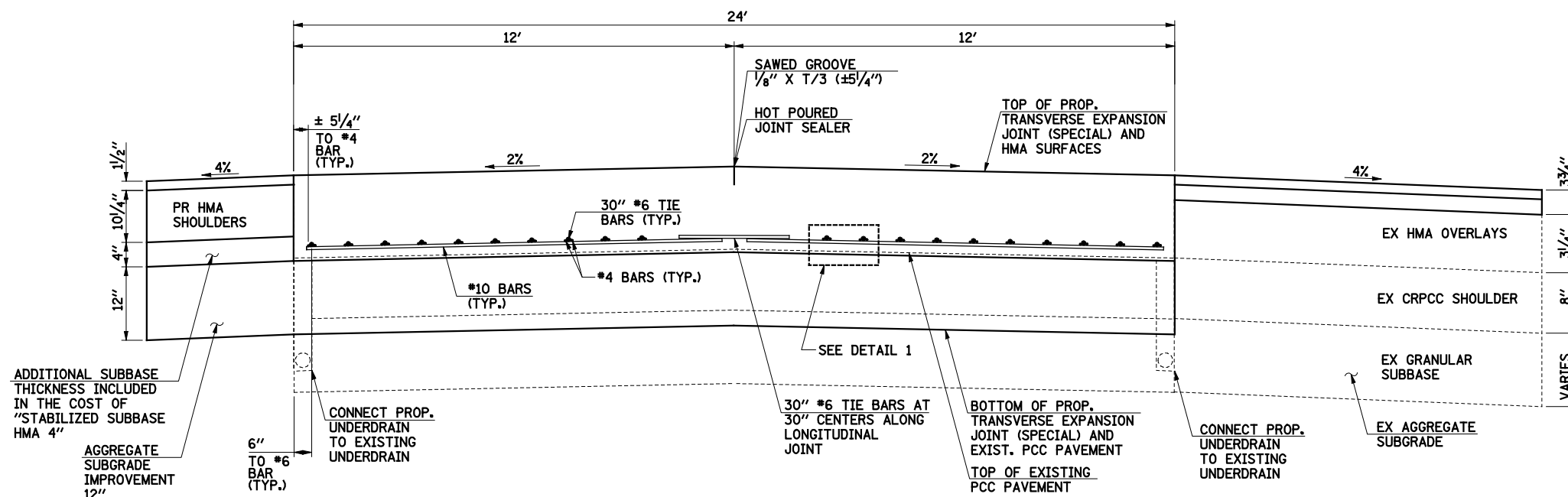
DATE	
BY	
REVISION	
NO.	
DATE	
BY	
REVISION	
NO.	
DATE	
BY	
REVISION	
NO.	



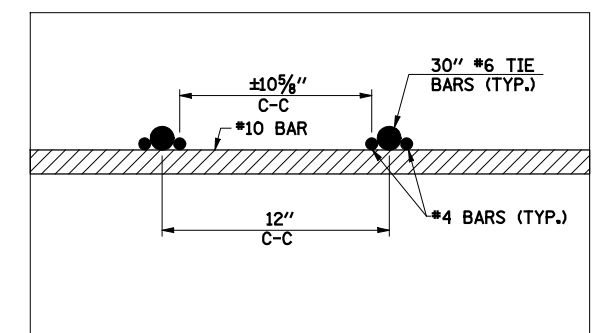
**A-A: CROSS SECTION OF TRANSVERSE EXPANSION JOINT (SPECIAL)
AT NORTHBOUND SOUTH LIMIT STA. 847+06.00
NORTHBOUND NORTH LIMIT STA. 839+71.50**



**TYPICAL VIEW OF TRANSVERSE EXPANSION JOINT (SPECIAL)
N.T.S.**



B-B: ELEVATION VIEW OF JOINT



**DETAIL 1
BAR SPLICING DETAILS**

FILE NAME = D386944_sht.dwg

USER NAME = bhenrichs	DESIGNED BAH	REVISED
	DRAWN BAH	REVISED
PLOT SCALE = 1/8" = 1' / IN.	CHECKED KAC	REVISED
PLOT DATE = 12/7/2012	DATE 12/07/2012	REVISED

**STATE OF ILLINOIS
DEPARTMENT OF TRANSPORTATION**

INTERSTATE 57 OVER LANGAN CREEK DETAILS	
SCALE:	SHEET 3 OF 8 SHEETS STA. TO STA.

F.A.I. RTE.	SECTION	COUNTY	TOTAL SHEETS	SHEET NO.
57	141 BR(SB) & 38-1 BR(NB)	IROQUOIS	138	99
				CONTRACT NO. 66944
ILLINOIS FED. AID PROJECT				