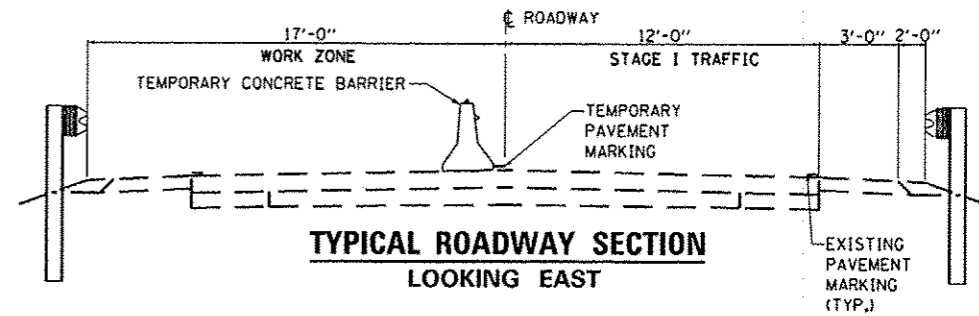
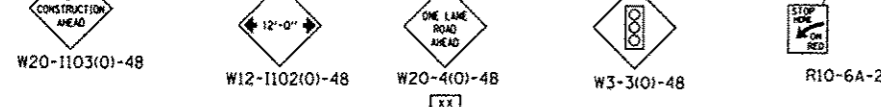


**STAGE I**

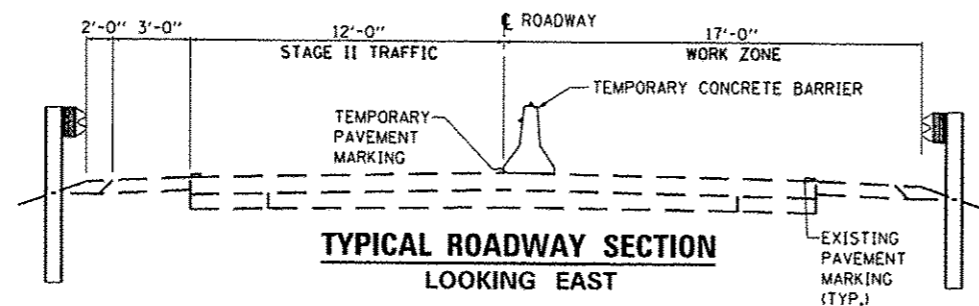


ADVISORY SPEED LIMIT	
NORMAL POSTED SPEED	ADVISORY SPEED
55 - 45 mph	40 mph
40 mph	35 mph
35 - 30 mph	30 mph

TEMPORARY CONCRETE BARRIER	
NORMAL POSTED SPEED	TAPER RATIO
40 mph AND ABOVE	12:1
BELOW 40 mph	8:1



**STAGE II**



- WORK AREA
- SIGN
- TYPE III BARRICADE
- TRAFFIC SIGNAL BACK PLATE
- IMPACT ATTENUATOR
- DRUM WITH STEADY BURNING BI-DIRECTIONAL LIGHT
- TEMPORARY CONCRETE BARRIER
- TEMPORARY RUMBLE STRIP
- IMPACT ATTENUATOR

- ① TYPE III BARRICADE TO BE PLACED WHEN NO WORK IS BEING PERFORMED.
- ② BARRIER WALL/GUARDRAIL MARKERS AT 25' CTS. SEE STANDARDS 704001 AND 635011.
- ③ DRUMS AT 25' CTS. (TYPICAL)

**GENERAL NOTES**  
 SEE TRAFFIC CONTROL AND PROTECTION STANDARD 701321 FOR DETAILS NOT SHOWN  
 TEMPORARY PAVEMENT MARKING AS SHOWN ON THIS DETAIL, SHALL BE PAID FOR ACCORDING TO SECTION 703.07 OF THE STANDARD SPECIFICATIONS.