

STATE OF ILLINOIS
DEPARTMENT OF TRANSPORTATION
DIVISION OF HIGHWAYS

**PROPOSED
HIGHWAY PLANS**

F.A.P. ROUTE 623 (US 6)
SECTION (H)

BOX CULVERT REPAIR
STRUCTURE NO. 050-2646
0.20 MILES EAST OF IL 170
(IN SENECA)
LASALLE COUNTY
C-93-008-13

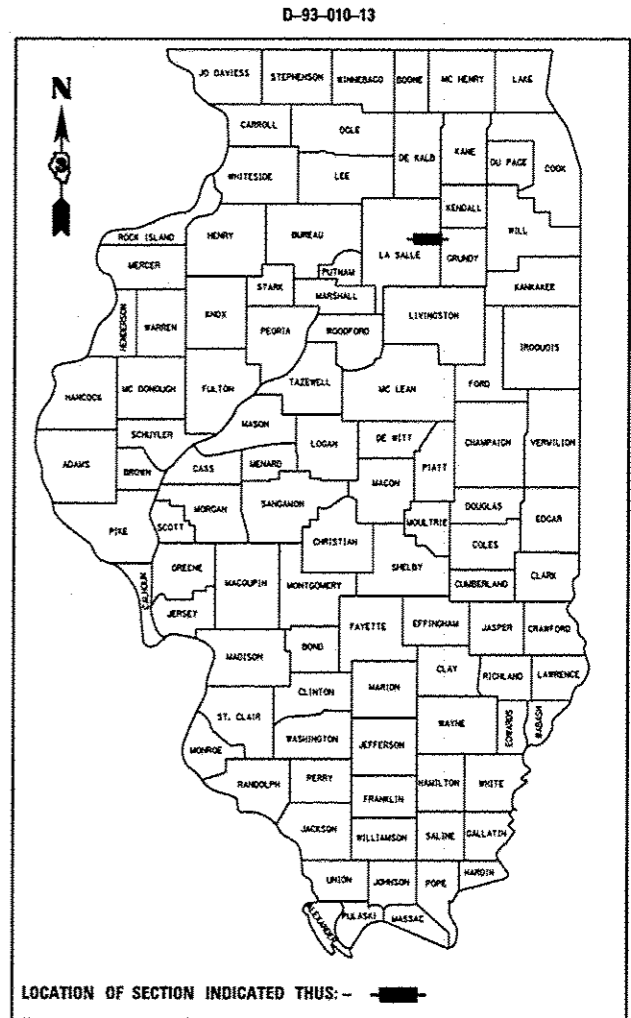
F.A.P. RTE.	SECTION	COUNTY	TOTAL SHEETS	SHEET NO.
623	(H)	LASALLE	8	1
		ILLINOIS	CONTRACT NO. 66C51	

INDEX OF SHEETS

1. COVER SHEET
2. GENERAL NOTES
3. SUMMARY OF QUANTITIES
4. TYPICAL SECTIONS
5. LANE CLOSURE, 2L, 2W, BRIDGE REPAIR WITH BARRIER - STANDARD 701321
- 6 - 8. STRUCTURE DETAILS

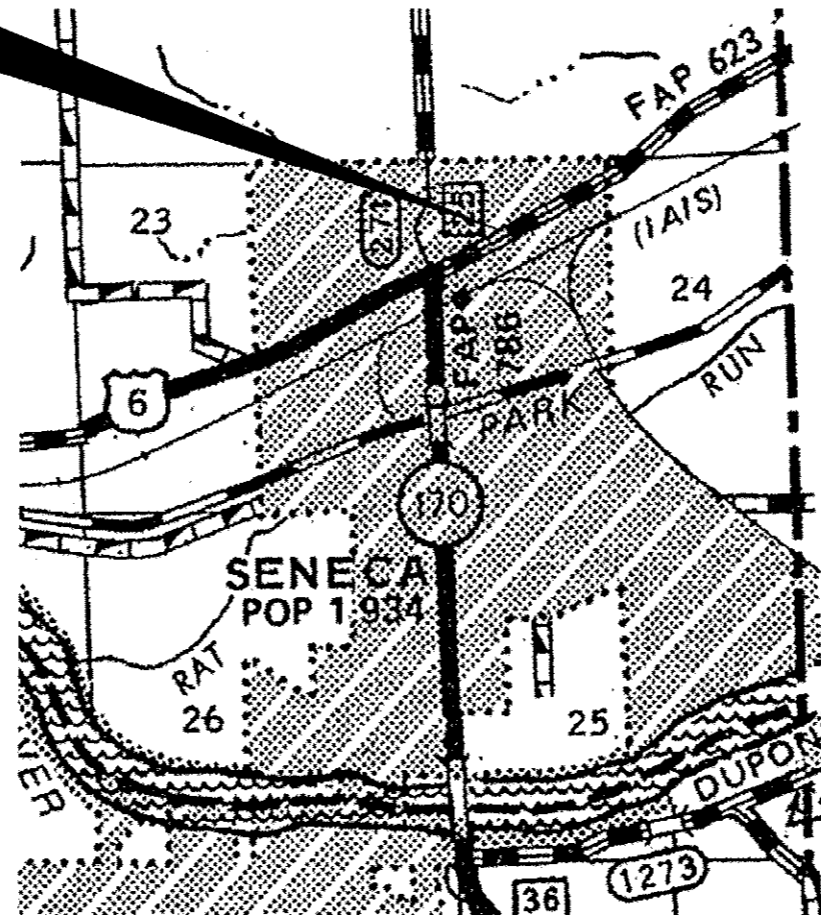
STANDARDS

000001-06	STANDARD SYMBOLS, ABBREVIATIONS AND PATTERNS
001001-02	AREAS OF REINFORCEMENT BARS
001006	DECIMAL OF AN INCH AND OF A FOOT
701006-04	OFF-ROAD OPERATIONS 2L, 2W, 15' (4.5 m) TO 24" (600 mm) FROM PAVEMENT EDGE
701201-04	LANE CLOSURE, 2L, 2W, DAY ONLY, FOR SPEEDS ≤ 45 MPH
701301-04	LANE CLOSURE, 2L, 2W, SHORT TIME OPERATIONS
701321-13	LANE CLOSURE, 2L, 2W, BRIDGE REPAIR WITH BARRIER
701326-04	LANE CLOSURE, 2L, 2W, PAVEMENT WIDENING, FOR SPEEDS ≤ 45 MPH
701901-02	TRAFFIC CONTROL DEVICES
704001-07	TEMPORARY CONCRETE BARRIER



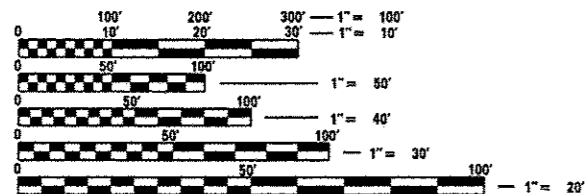
PROJECT LOCATION

S.N. 050-2646
(STA. 349+45)



**URBAN
MINOR ARTERIAL**
FAP 623 (US 6)
2011

ADT	3450
P.V.	83.26%
S.U.	10.94%
M.U.	5.80%



FULL SIZE PLANS HAVE BEEN PREPARED USING STANDARD ENGINEERING SCALES. REDUCED SIZED PLANS WILL NOT CONFORM TO STANDARD SCALES. IN MAKING MEASUREMENTS ON REDUCED PLANS, THE ABOVE SCALES MAY BE USED.

J.U.L.I.E.
JOINT UTILITY LOCATION INFORMATION FOR EXCAVATION
1-800-892-0123
OR 811

DISTRICT 3 NO. 815-434-6131

PROJECT ENGINEER: JOE KANNEL P.E.
UNIT CHIEF: RON WOODSHANK
TOWNSHIP: MANLIUS
CONTRACT NO. 66C51

STATE OF ILLINOIS
DEPARTMENT OF TRANSPORTATION
DIVISION OF HIGHWAYS

SUBMITTED Dec 13 20 12
Paul C. [Signature]
DEPUTY DIRECTOR OF HIGHWAYS, REGION ENGINEER

Feb 1 20 13
John D. Baranzoli P.E.
acting ENGINEER OF DESIGN AND ENVIRONMENT

Feb 1 20 13
Omer Osman P.E.
DIRECTOR OF HIGHWAYS, CHIEF ENGINEER

**PRINTED BY THE AUTHORITY
OF THE STATE OF ILLINOIS**

POINT LOCATION

GENERAL NOTES

REINFORCEMENT BARS DESIGNATED (E) SHALL BE EPOXY COATED.

THE THICKNESS OF HMA SHOWN ON THE PLANS IS THE NOMINAL THICKNESS. DEVIATIONS FROM THE NOMINAL THICKNESS WILL BE PERMITTED WHEN SUCH DEVIATIONS OCCUR DUE TO IRREGULARITIES IN THE EXISTING SURFACE OR BASE ON WHICH THE HMA IS PLACED.

THE ENGINEER WILL BE THE SOLE JUDGE CONCERNING CURING TIME FOR THE VARIOUS HMA LIFTS.

FOR STABILIZATION, ALL TYPE III BARRICADES SHALL REQUIRE A MINIMUM OF FOUR SAND BAGS PER BARRICADE.

ABANDONED UNDERGROUND UTILITIES THAT CONFLICT WITH CONSTRUCTION SHALL BE DISPOSED OF OUTSIDE THE LIMITS OF THE RIGHT OF WAY ACCORDING TO ARTICLE 202.03 OF THE STANDARD SPECIFICATIONS AND AS DIRECTED BY THE ENGINEER. THIS WORK WILL NOT BE PAID FOR SEPARATELY, BUT SHALL BE INCLUDED IN THE COST OF EARTH EXCAVATION.

ANY REFERENCE TO A STANDARD IN THESE PLANS SHALL BE INTERPRETED TO MEAN THE EDITION AS INDICATED BY THE SUBNUMBER SHOWN IN THE LIST OF STANDARDS OR THE COPY INCLUDED IN THESE PLANS.

THE CONTRACTOR SHALL CONTACT J.U.L.I.E. AT LEAST 48 HOURS PRIOR TO EXCAVATION TO DETERMINE WHICH UTILITIES ARE IN THE AREA.

THE FOLLOWING RATES OF APPLICATION HAVE BEEN USED IN CALCULATING PLAN QUANTITIES:

GRANULAR MATERIALS	2.05	TONS / CU YD
HMA RESURFACING	112	LBS / SQ YD / IN

BITUMINOUS MATERIALS (PRIME COAT) RATES		
SURFACE TYPE	ESTIMATED TRUCK APPLICATION RATE	RESIDUAL RATE
AGGREGATE BASES	0.375 GAL / SQ YD	N/A
MILLED HMA OR PCC PAVEMENT	0.08 GAL / SQ YD	0.04 GAL / SQ YD
EXISTING PAVEMENT	0.05 GAL / SQ YD	0.025 GAL / SQ YD
FOG COAT (BETWEEN ADDITIONAL HMA LIFTS)	0.05 GAL / SQ YD	0.025 GAL / SQ YD

ESTIMATED TRUCK APPLICATION RATE USED FOR CALCULATING PLAN QUANTITIES

COMMITMENTS

DISPOSAL OF EXCAVATED MATERIALS. ALL SUITABLE OR UNSUITABLE MATERIALS EXCAVATED DUE TO CONSTRUCTION OPERATIONS SHALL BE DISPOSED OF WITH THE LIMITS OF EXISTING RIGHT OF WAY. DISPOSAL OF EXCAVATED MATERIALS OFF THE RIGHT OF WAY SHALL NOT BE PERMITTED.

EXCAVATED MATERIALS SHALL BE DISPOSED OF AT LOCATIONS DIRECTED BY THE ENGINEER.

ANY SUCH DISPOSAL SHALL NOT CREATE AND UNSIGHTLY OR OBJECTIONABLE APPEARANCE OR DETRACT FROM THE NATURAL TOPOGRAPHIC FEATURES WITHOUT WRITTEN PERMISSION FROM THE ENGINEER.

DATE: 12-13-12

PREPARED BY: [Signature]
DISTRICT STUDIES & PLANS ENGINEER

EXAMINED BY: [Signature]
DISTRICT CONSTRUCTION ENGINEER

[Signature]
DISTRICT MATERIALS ENGINEER

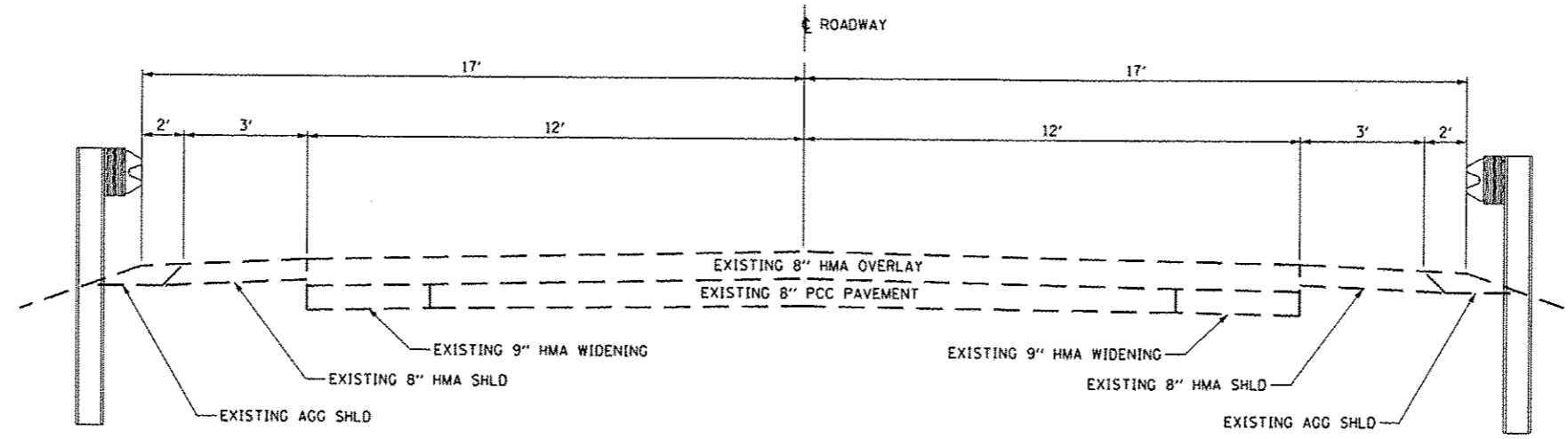
[Signature]
DISTRICT OPERATIONS ENGINEER

CODE NO.	ITEM	UNIT	100% STATE
			0021 TOTAL QUANTITY
20200100	EARTH EXCAVATION	CU YD	38
31101000	SUBBASE GRANULAR MATERIAL, TYPE B	TON	62
44004250	PAVED SHOULDER REMOVAL	SQ YD	34
48203029	HOT-MIX ASPHALT SHOULDERS, 8"	SQ YD	56
50102400	CONCRETE REMOVAL	CU YD	5.9
50800205	REINFORCEMENT BARS, EPOXY COATED	POUND	460
54003000	CONCRETE BOX CULVERTS	CU YD	5.9
63301235	REMOVE AND REERECT STEEL PLATE BEAM GUARDRAIL, TYPE A, ATTACHED TO STRUCTURES	FOOT	75
67100100	MOBILIZATION	L SUM	1
70100405	TRAFFIC CONTROL AND PROTECTION, STANDARD 701321	EACH	1
70106500	TEMPORARY BRIDGE TRAFFIC SIGNALS	EACH	1
70400100	TEMPORARY CONCRETE BARRIER	FOOT	112
70400200	RELOCATE TEMPORARY CONCRETE BARRIER	FOOT	112
70600250	IMPACT ATTENUATORS, TEMPORARY (NON- REDIRECTIVE), TEST LEVEL 3	EACH	2
70600350	IMPACT ATTENUATORS, RELOCATE (NON- REDIRECTIVE), TEST LEVEL 3	EACH	2
* 78001130	PAINT PAVEMENT MARKING - LINE 6"	FOOT	120
78300100	PAVEMENT MARKING REMOVAL	SO FT	60

* SPECIALITY ITEM

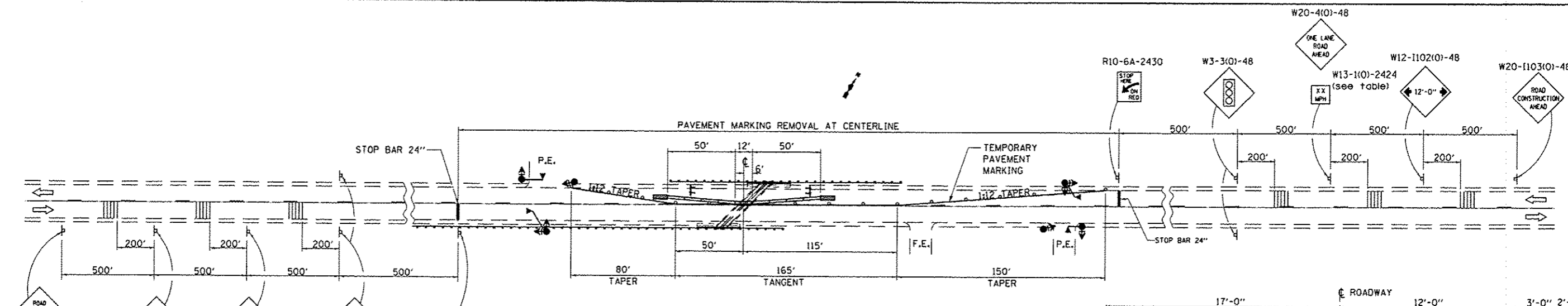
FILE NAME >	USER NAME > woodshankr1	DESIGNED -	REVISED -	STATE OF ILLINOIS DEPARTMENT OF TRANSPORTATION	SUMMARY OF QUANTITIES	F.A.P. RTE. 623	SECTION (H)	COUNTY LASALLE	TOTAL SHEETS 8	SHEET NO. 3		
c:\pr_work\pavdot\woodshankr1\d83139791	366C51.sht; details.dgn	DRAWN -	REVISED -			SCALE: 1" = 40'	SHEET NO. 1 OF 1 SHEETS	STA.	TO STA.	CONTRACT NO. 66C51		
	PLOT SCALE * 1/8" = 1' / in.	CHECKED -	REVISED -			[ILLINOIS] FED. AID PROJECT						
	PLOT DATE * 11/15/2012	DATE -	REVISED -									

Rev.

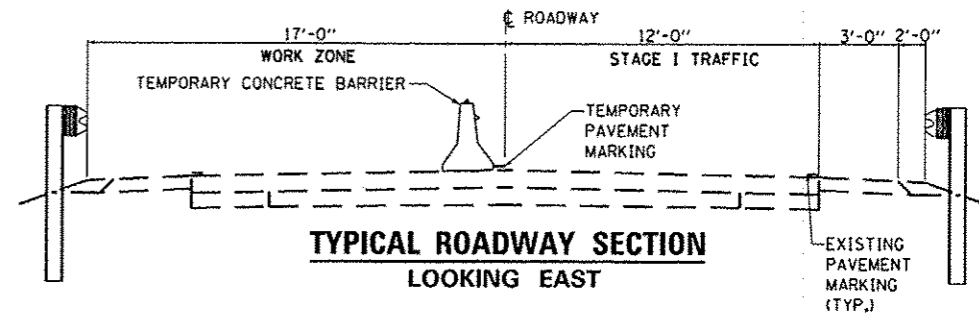


TYPICAL ROADWAY SECTION

FILE NAME =	USER NAME = woodshankr1	DESIGNED -	REVISED -	STATE OF ILLINOIS DEPARTMENT OF TRANSPORTATION	TYPICAL SECTIONS	F.A.P. RTE.	SECTION	COUNTY	TOTAL SHEETS	SHEET NO.	
c:\pwork\pwidot\woodshankr1\d8313979\	666C51-shd-details.dgn	DRAWN -	REVISED -			623	(H)	LASALLE	8	4	
	PLOT SCALE = 1/8" = 1' / in.	CHECKED -	REVISED -			CONTRACT NO. 66C51					
	PLOT DATE = 11/15/2012	DATE -	REVISED -			SCALE:	SHEET NO. 1 OF 1 SHEETS	STA.	TO STA.	ILLINOIS FED. AID PROJECT	

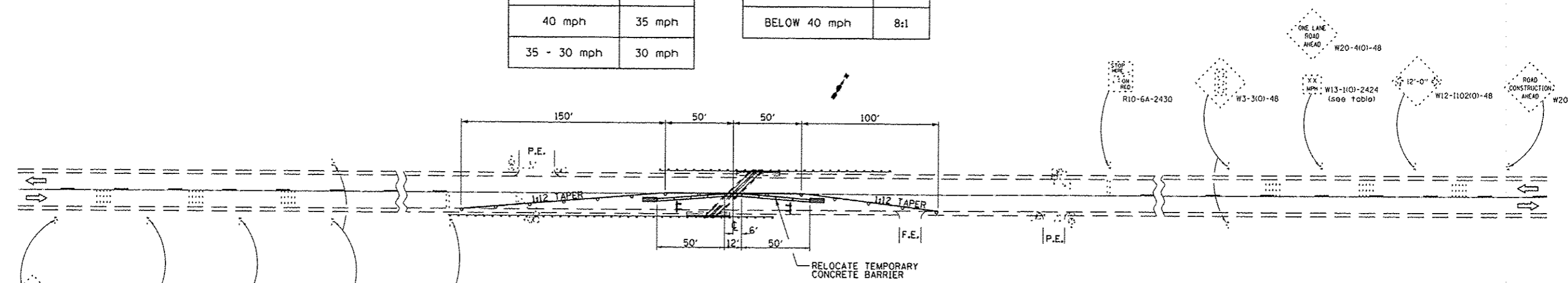


STAGE I

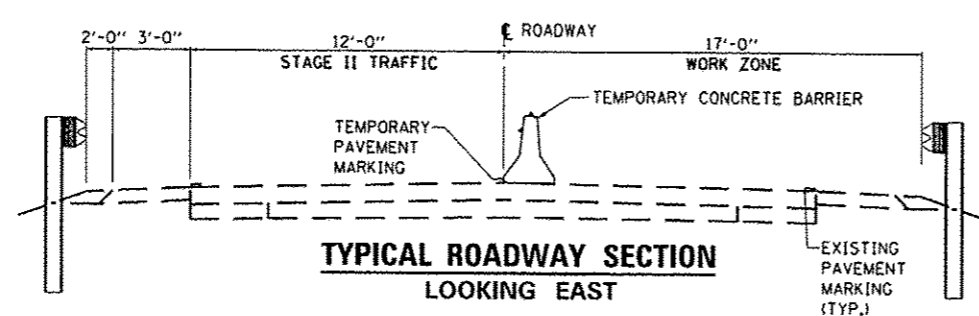


ADVISORY SPEED LIMIT	
NORMAL POSTED SPEED	ADVISORY SPEED
55 - 45 mph	40 mph
40 mph	35 mph
35 - 30 mph	30 mph

TEMPORARY CONCRETE BARRIER	
NORMAL POSTED SPEED	TAPER RATIO
40 mph AND ABOVE	12:1
BELOW 40 mph	8:1



STAGE II




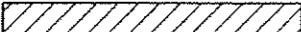
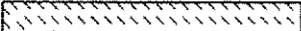
- WORK AREA
- SIGN
- TYPE III BARRICADE
- TRAFFIC SIGNAL BACK PLATE
- IMPACT ATTENUATOR
- DRUM WITH STEADY BURNING BI-DIRECTIONAL LIGHT
- TEMPORARY CONCRETE BARRIER
- TEMPORARY RUMBLE STRIP
- IMPACT ATTENUATOR

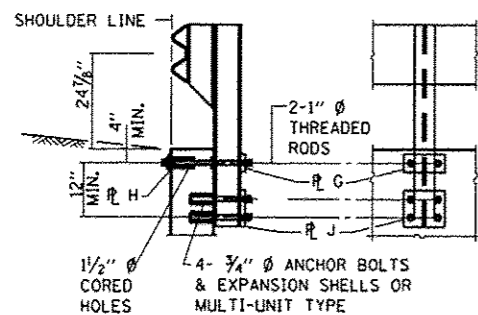
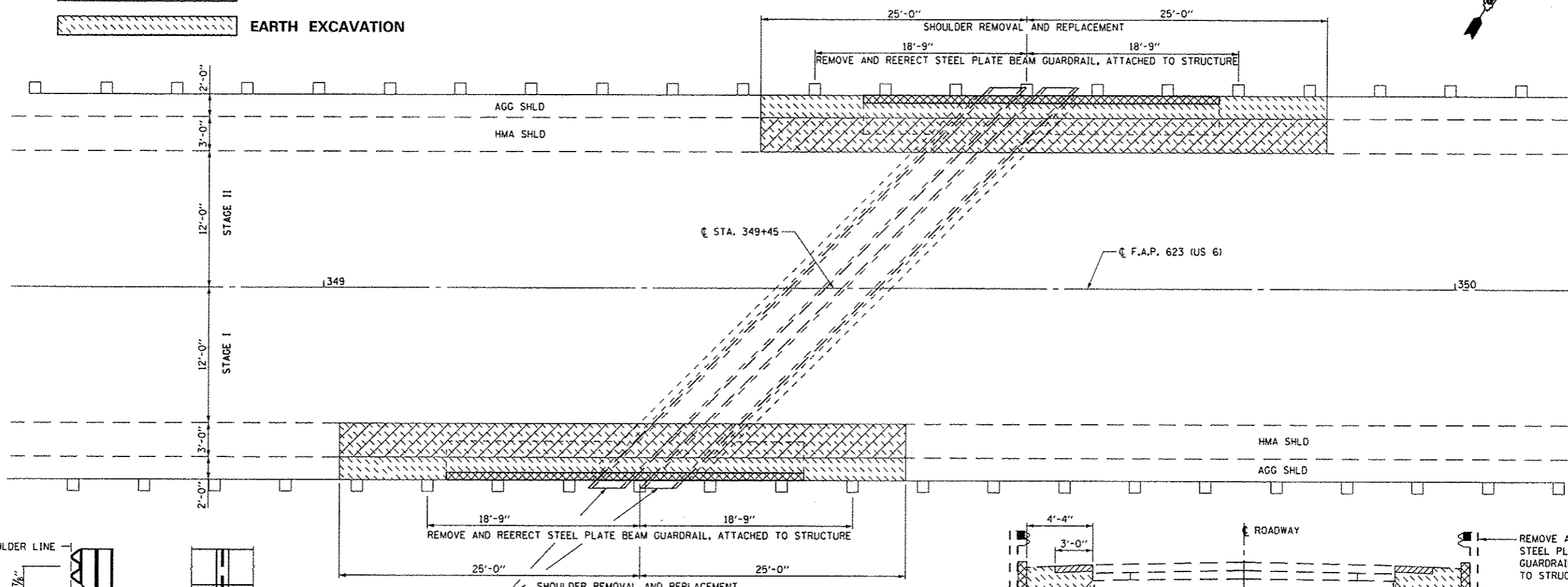
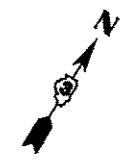
- ① TYPE III BARRICADE TO BE PLACED WHEN NO WORK IS BEING PERFORMED.
- ② BARRIER WALL/GUARDRAIL MARKERS AT 25' CTS. SEE STANDARDS 704001 AND 635011.
- ③ DRUMS AT 25' CTS. (TYPICAL)

GENERAL NOTES

SEE TRAFFIC CONTROL AND PROTECTION STANDARD 701321 FOR DETAILS NOT SHOWN

TEMPORARY PAVEMENT MARKING AS SHOWN ON THIS DETAIL, SHALL BE PAID FOR ACCORDING TO SECTION 703.07 OF THE STANDARD SPECIFICATIONS.

-  PARTIAL CONCRETE HEADWALL REMOVAL AND REPLACEMENT
-  PAVED SHOULDER REMOVAL AND REPLACEMENT
-  EARTH EXCAVATION



GUARDRAIL MOUNTED ON STRUCTURE

EXISTING PIPE CULVERTS TO REMAIN

PLAN

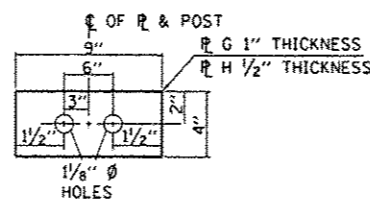


PLATE G, H

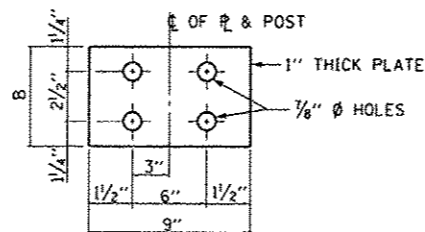
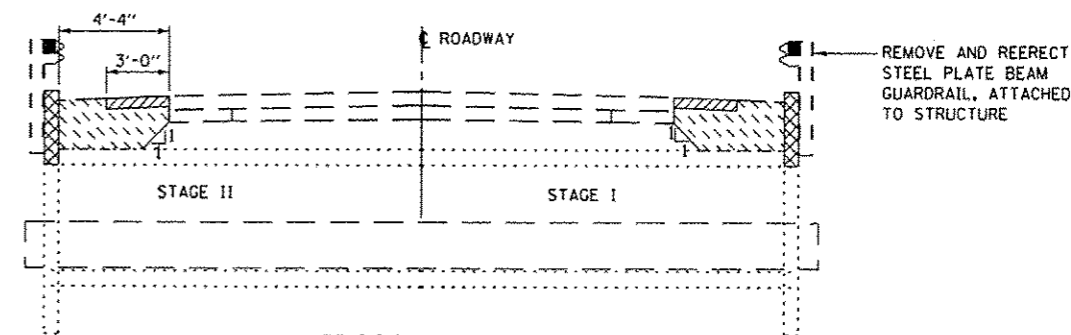
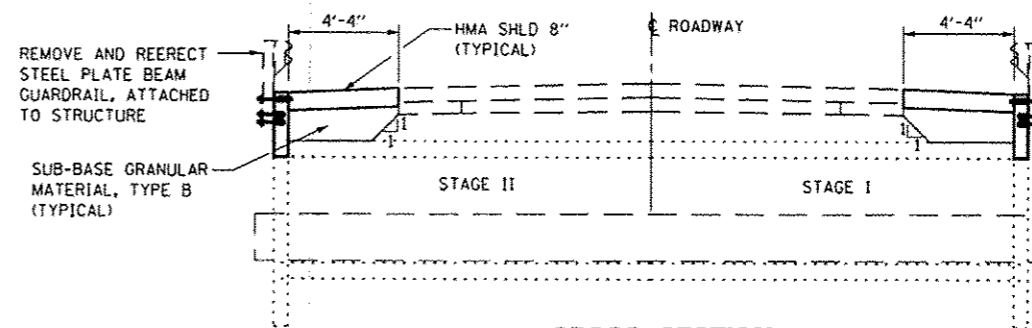


PLATE J



CROSS SECTION LOOKING NORTHEAST EXISTING

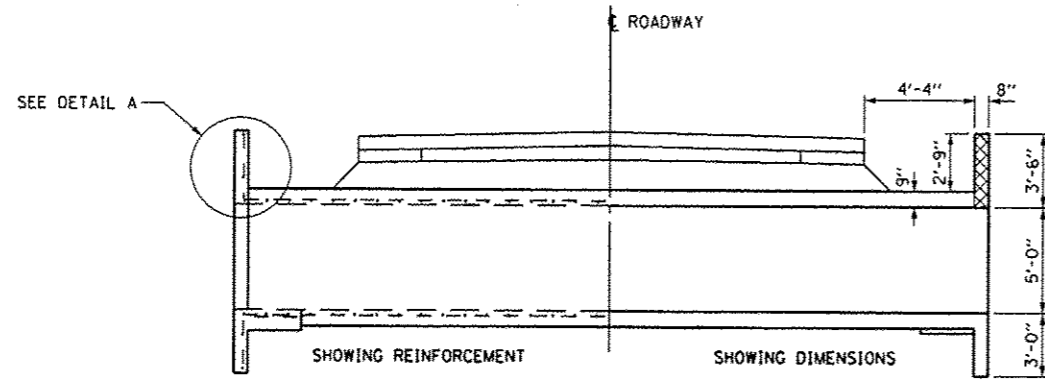


CROSS SECTION LOOKING NORTHEAST PROPOSED

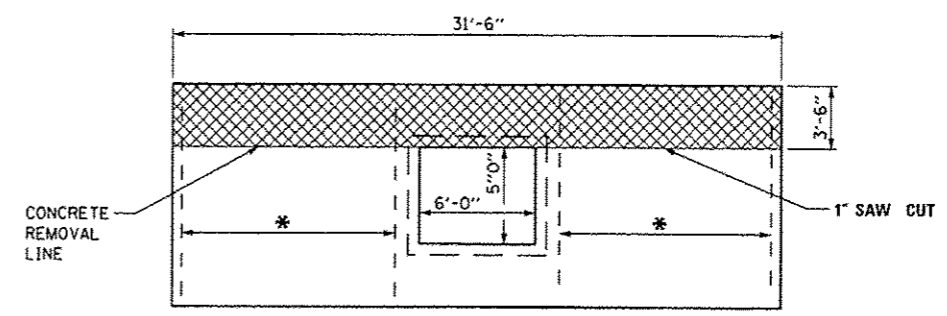


David Carl Puzey
Expires 11/30/14

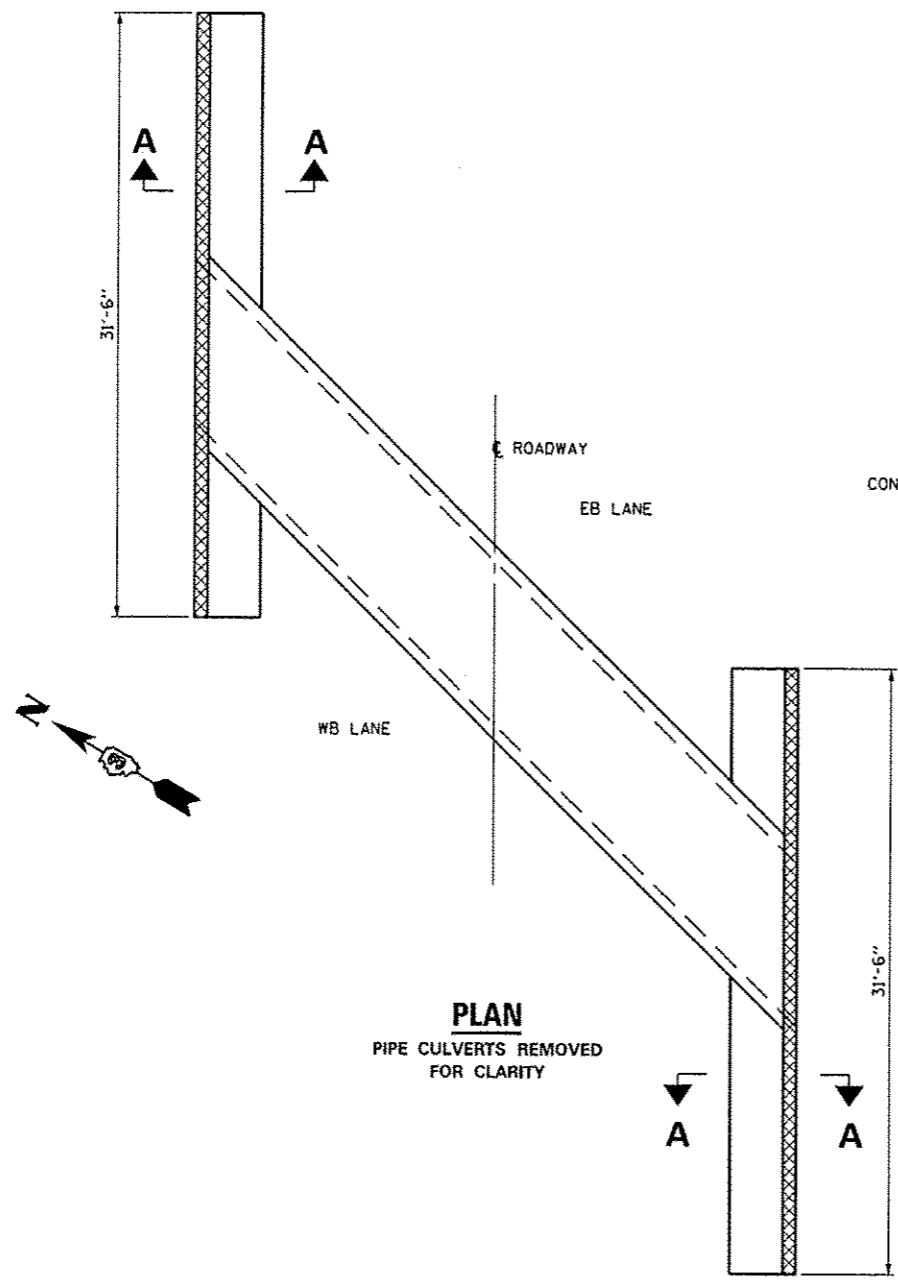
FILE NAME : e:\p\work\p1dat\woodshankr1\d8313979\66651-shr-details.dgn	USER NAME : woodshankr1	DESIGNED - RLW	REVISED -	STATE OF ILLINOIS DEPARTMENT OF TRANSPORTATION	GENERAL ROADWAY PLAN FOR STRUCTURE NO. 050-2646	F.A.P. RTE. 623	SECTION (HI)	COUNTY LASALLE	TOTAL SHEETS 8	SHEET NO. 6	
PLOT SCALE = 100,0000 / 1" =	CHECKED - SMR	REVISED -	SCALE: 1" = 100'			SHEET NO. 1 OF 3 SHEETS	STA. TO STA.	ILLINOIS FED. AID PROJECT			
PLOT DATE = 1/11/2013	DATE = 01/11/2013	REVISED -									



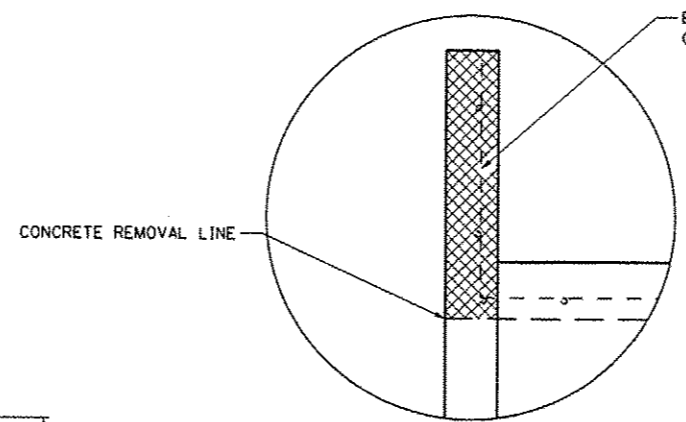
ELEVATION
LOOKING NORTHEAST
PIPE CULVERTS REMOVED FOR CLARITY



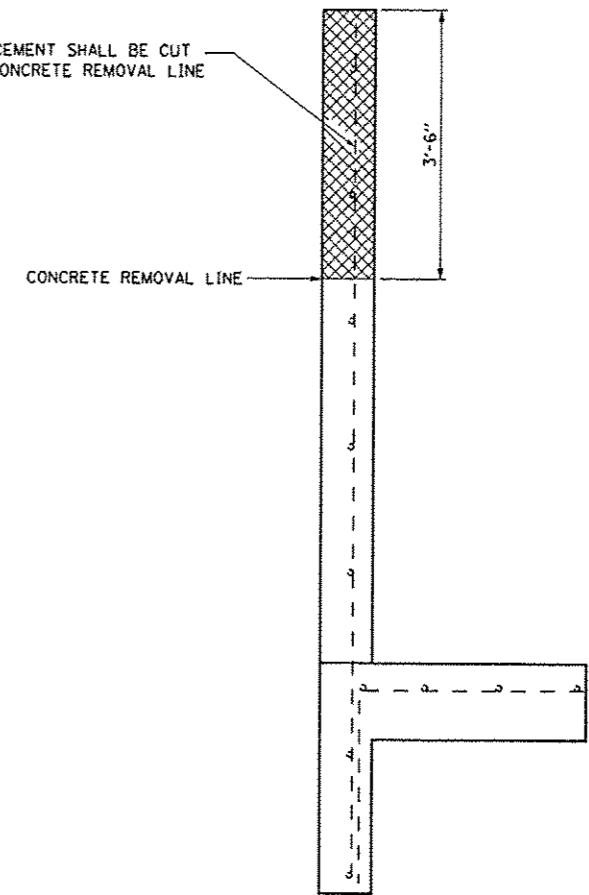
END ELEVATION
TYPICAL EACH WING
PIPE CULVERTS REMOVED FOR CLARITY



PLAN
PIPE CULVERTS REMOVED FOR CLARITY



DETAIL A



SECTION A-A

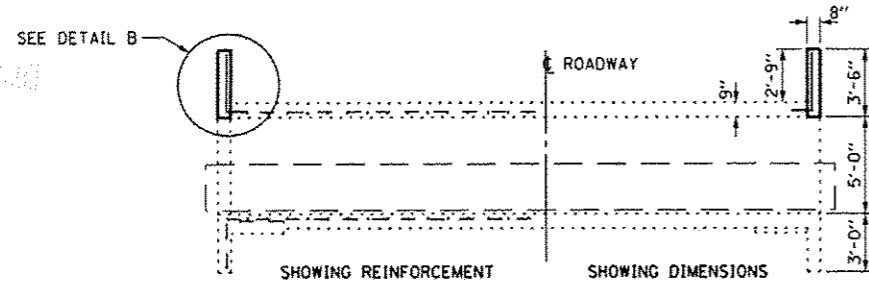
FILE NAME =	USER NAME = woodshankr1	DESIGNED -	REVISED -
c:\pwork\pwork\woodshankr1\d8313979\66651-shr-detail.dgn		DRAWN -	REVISED -
		CHECKED -	REVISED -
		DATE -	REVISED -

STATE OF ILLINOIS
DEPARTMENT OF TRANSPORTATION

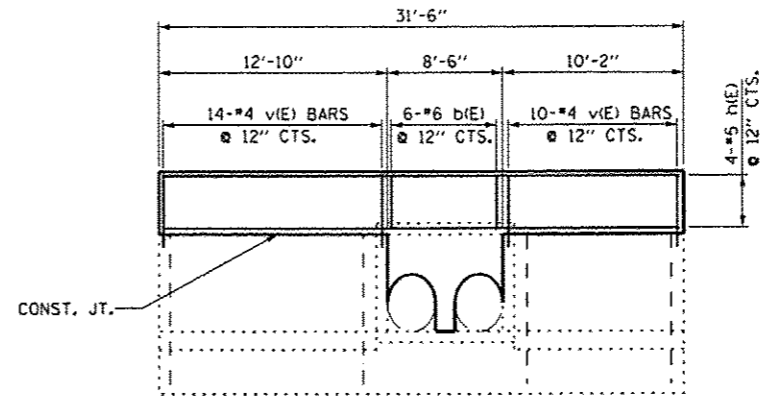
**GENERAL PLAN AND ELEVATION
FOR STRUCTURE NO. 050-2646**

F.A.P. RTE. 623	SECTION (H)	COUNTY LASALLE	TOTAL SHEETS 8	SHEET NO. 7
CONTRACT NO. 66C51				
ILLINOIS FED. AID PROJECT				

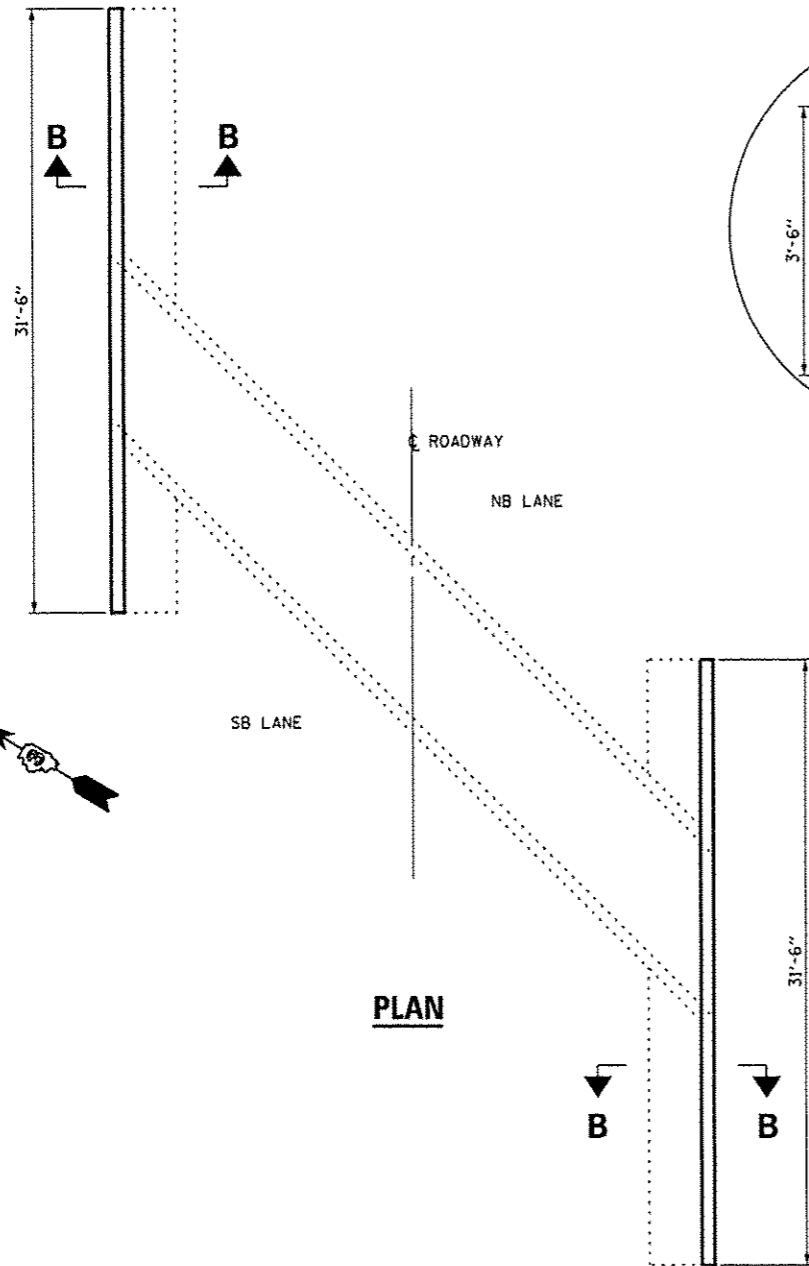
SCALE: SHEET NO. 2 OF 3 SHEETS STA. TO STA.



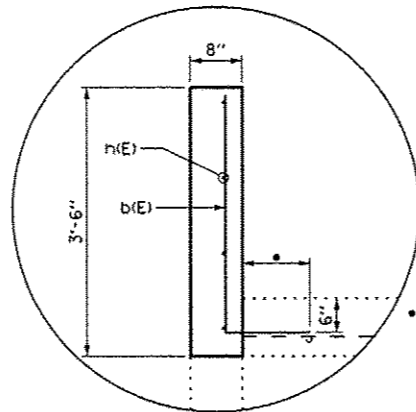
ELEVATION
LOOKING NORTHBOUND



END ELEVATION

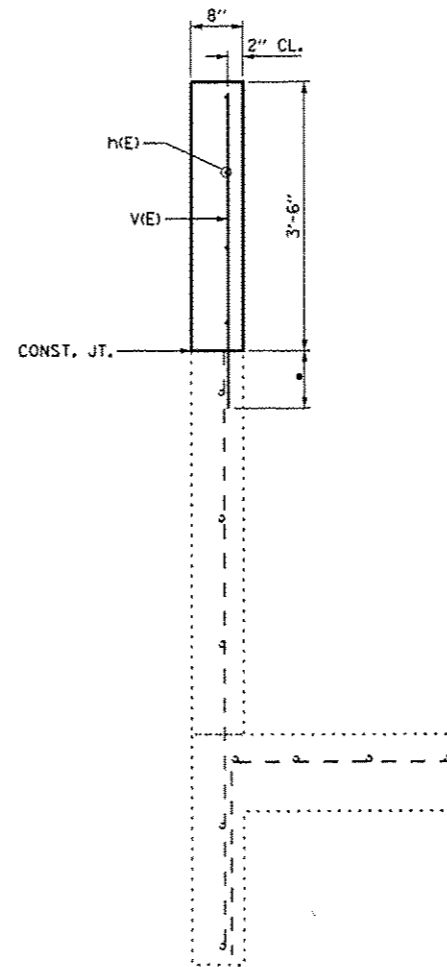


PLAN

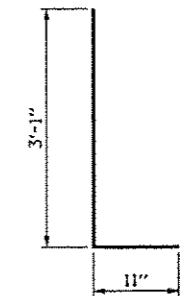


DETAIL B

• DRILL AND GROUT BARS 9" EMBEDMENT ACCORDING TO ARTICLE 584 OF THE STANDARD SPECIFICATIONS



SECTION B-B



b(E) BAR

BILL OF MATERIAL

Bar	No.	Size	Length	Shape
b(E)	12	#6	4'-0"	
h(E)	8	#5	31'-2"	
v(E)	48	#4	4'-1"	
CONCRETE REMOVAL			CU. YD.	5.9
CONCRETE BOX CULVERT			CU. YD.	5.9
REINFORCEMENT BARS, EPOXY COATED			LBS.	460
REMOVE AND REERECT STEEL PLATE BEAM GUARDRAIL, TYPE A ATTACHED TO STRUCTURES			FOOT	75

FILE NAME *	USER NAME = woodshankr	DESIGNED -	REVISED -
c:\pwwork\pardo\woodshankr\1108312979\666C51-sh1-detail1.svdgn		DRAWN -	REVISED -
	PLOT SCALE = 100.0000 1/16" = 1'	CHECKED -	REVISED -
	PLOT DATE = 11/15/2012	DATE -	REVISED -

STATE OF ILLINOIS
DEPARTMENT OF TRANSPORTATION

SCALE:	SHEET NO. 3 OF 3 SHEETS	STA. TO STA.	F.A.P. RTE. 623	SECTION (H)	COUNTY LASALLE	TOTAL SHEETS 8	SHEET NO. 8
			ILLINOIS FED. AID PROJECT		CONTRACT NO. 66C51		