

STATE OF ILLINOIS
DEPARTMENT OF TRANSPORTATION
DIVISION OF HIGHWAYS

**PROPOSED
HIGHWAY PLANS**

FAI ROUTE 80 (I-80)
SECTION D3 CRACK SEAL 2013

**CRACK ROUTING AND SEALING
BUREAU / LASALLE COUNTY**

C-93-026-13

F.A.I. RTE.	SECTION	COUNTY	TOTAL SHEETS	SHEET NO.
80	D3 CRACK SEAL 2013	ILLINOIS	7	1

BUREAU / LASALLE

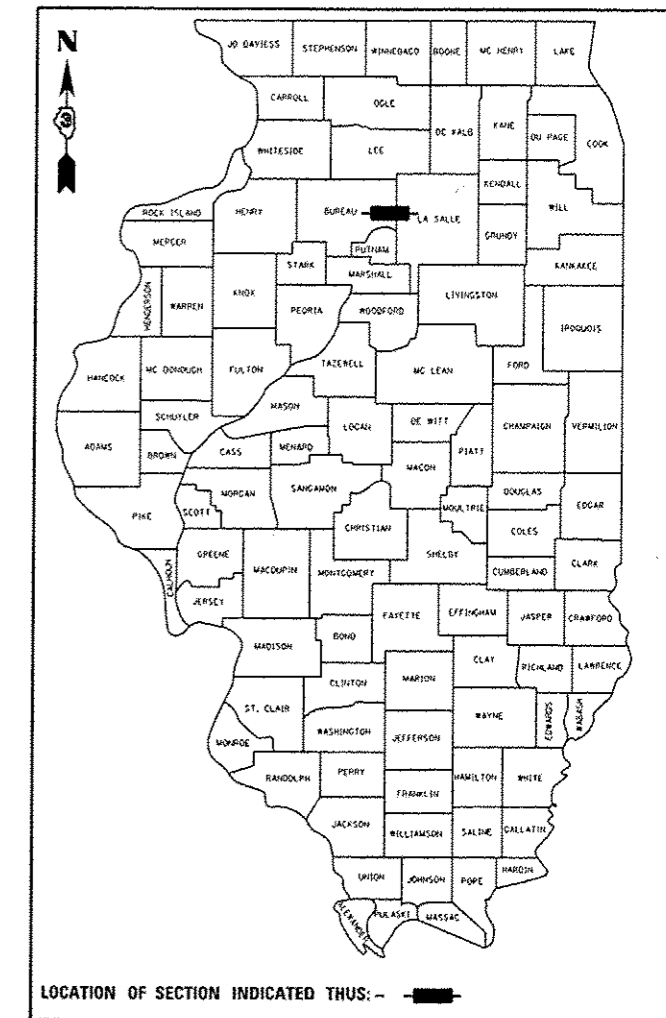
D93-025-13

INDEX OF SHEETS

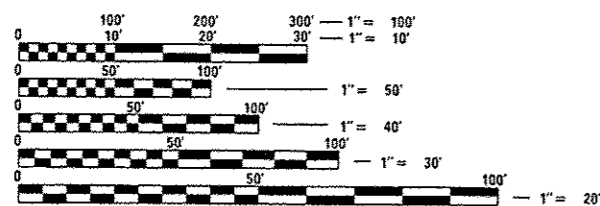
1	COVER SHEET
2	GENERAL NOTES
3	SUMMARY OF QUANTITIES
4	TYPICAL SECTIONS
5	SCHEDULES
6-7	MISCELLANEOUS DETAILS

LIST OF ILLINOIS DOT HIGHWAY STANDARDS

000001-06	STANDARD SYMBOLS, ABBREVIATIONS AND PATTERNS
001006	DECIMAL OF AN INCH AND OF A FOOT
701101-03	OFF-ROAD OPERATIONS MULTILANE, 15' (4.5 m) TO 24' (800 mm) FROM PAVEMENT EDGE
701406-07	LANE CLOSURE, FREEWAY/EXPRESSWAY, DAY OPERATIONS ONLY
701411-08	LANE CLOSURE, MULTILANE, AT ENTRANCE OR EXIT RAMP FOR SPEEDS ≥ 45 MPH
701426-05	LANE CLOSURE, MULTILANE INTERMITTENT OR MOVING OPERATION, FOR SPEEDS ≥ 45 MPH
701901-02	TRAFFIC CONTROL DEVICES
780001-03	TYPICAL PAVEMENT MARKINGS



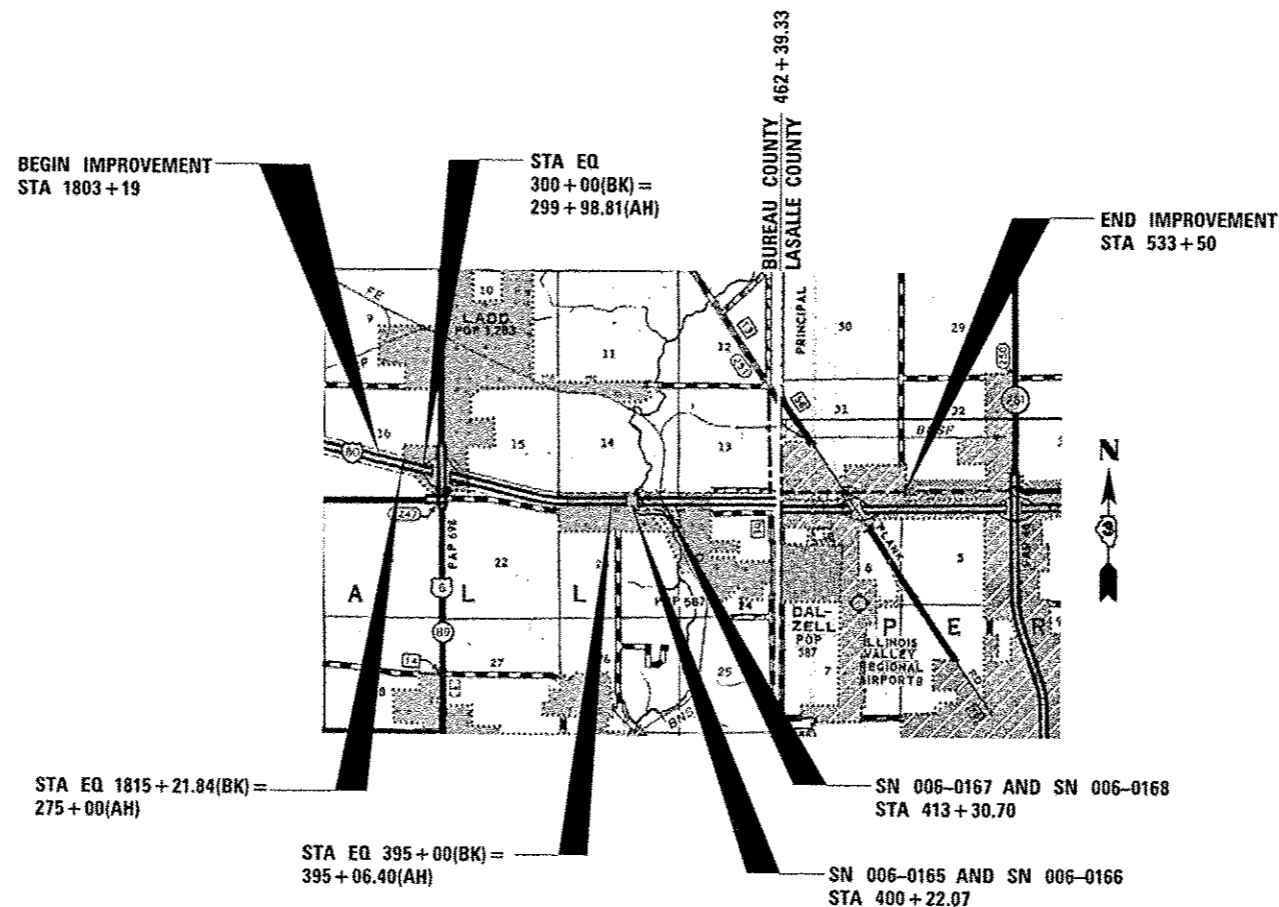
FUNCTIONAL CLASSIFICATION - INTERSTATE
2011 ADT = 23,600
P.V. = 62.5%
S.U. = 3.18%
M.U. = 34.32%



FULL SIZE PLANS HAVE BEEN PREPARED USING STANDARD ENGINEERING SCALES. REDUCED SIZED PLANS WILL NOT CONFORM TO STANDARD SCALES. IN MAKING MEASUREMENTS ON REDUCED PLANS, THE ABOVE SCALES MAY BE USED.

J.U.L.I.E.
JOINT UTILITY LOCATION INFORMATION FOR EXCAVATION
1-800-892-0123
OR 811

PROJECT ENGINEER: JOE KANNEL, PE
UNIT CHIEF: MICHELE LINDEMANN, PE
DISTRICT NO. (815)-434-6131
CONTRACT NO. 66C66



GROSS LENGTH = 27,047.63 FT. = 5.123 MILE
NET LENGTH = 27,047.63 FT. = 5.123 MILE

STATE OF ILLINOIS
DEPARTMENT OF TRANSPORTATION
DIVISION OF HIGHWAYS

SUBMITTED 02-14-2012
Paul A. Lantieri, PE
DEPUTY DIRECTOR OF HIGHWAYS, REGION ENGINEER

Feb 1 2013
John D. Baranzello, PE
ENGINEER OF DESIGN AND ENVIRONMENT

Feb 1 2013
Omer Osman, PE
DIRECTOR OF HIGHWAYS, CHIEF ENGINEER

**PRINTED BY THE AUTHORITY
OF THE STATE OF ILLINOIS**