

STATE OF ILLINOIS
DEPARTMENT OF TRANSPORTATION
DIVISION OF HIGHWAYS

**PROPOSED
HIGHWAY PLANS**

FAI ROUTE 80 (I-80)
SECTION D3 CRACK SEAL 2013-2

CRACK ROUTING AND SEALING
BUREAU COUNTY

C-93-029-13

F.A.I. RTE.	SECTION	COUNTY	TOTAL SHEETS	SHEET NO.
80	D3 CRACK SEAL 2013-2	BUREAU	7	1
		ILLINOIS	CONTRACT NO. 66C68	

INDEX OF SHEETS

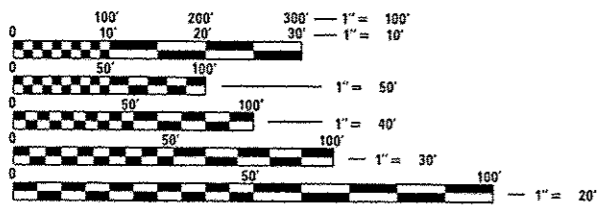
1	COVER SHEET
2	GENERAL NOTES
3	SUMMARY OF QUANTITIES
4	TYPICAL SECTIONS
5	SCHEDULES
6-7	MISCELLANEOUS DETAILS

LIST OF ILLINOIS DOT HIGHWAY STANDARDS

000001-06	STANDARD SYMBOLS, ABBREVIATIONS AND PATTERNS
001006	DECIMAL OF AN INCH AND OF A FOOT
701101-03	OFF-ROAD OPERATIONS MULTILANE, 15' (4.5 m) TO 24' (600 mm) FROM PAVEMENT EDGE
701406-07	LANE CLOSURE, FREEWAY/EXPRESSWAY, DAY OPERATIONS ONLY
701411-08	LANE CLOSURE, MULTILANE, AT ENTRANCE OR EXIT RAMP FOR SPEEDS ≥ 45 MPH
701426-05	LANE CLOSURE, MULTILANE INTERMITTENT OR MOVING OPERATION, FOR SPEEDS ≥ 45 MPH
701901-02	TRAFFIC CONTROL DEVICES
780001-03	TYPICAL PAVEMENT MARKINGS



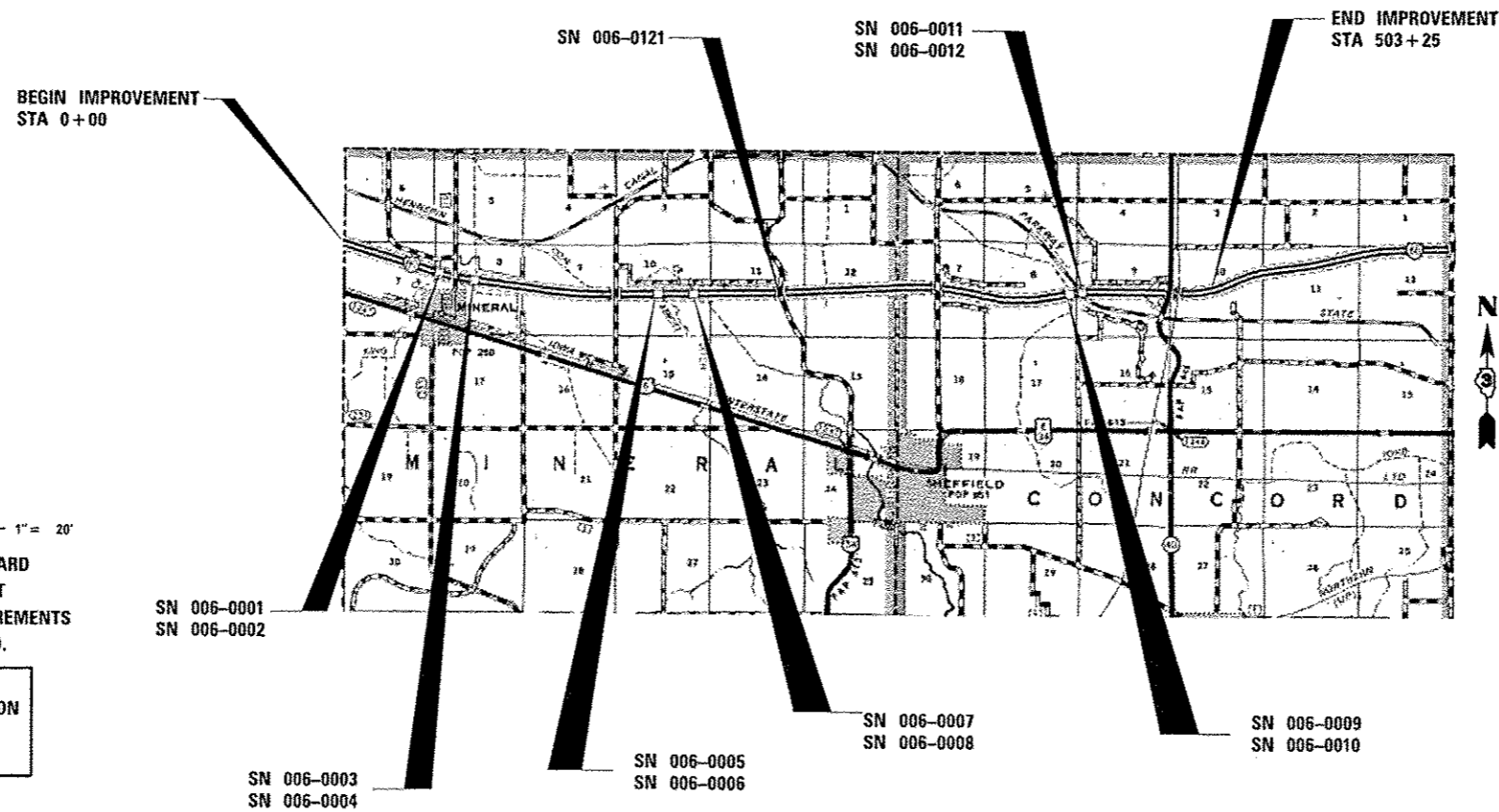
FUNCTIONAL CLASSIFICATION - INTERSTATE
2011 ADT = 16,400
P.V. = 60.5%
S.U. = 3.5%
M.U. = 36.0%



FULL SIZE PLANS HAVE BEEN PREPARED USING STANDARD ENGINEERING SCALES. REDUCED SIZED PLANS WILL NOT CONFORM TO STANDARD SCALES. IN MAKING MEASUREMENTS ON REDUCED PLANS, THE ABOVE SCALES MAY BE USED.

J.U.L.I.E.
JOINT UTILITY LOCATION INFORMATION FOR EXCAVATION
1-800-892-0123
OR 811

PROJECT ENGINEER: JOE KANNEL, P.E.
UNIT CHIEF: RON WOODSHANK
DISTRICT NO. (815)434-6131
CONTRACT NO. 66C68



GROSS LENGTH = 50,325 FT. = 9.531 MILE
NET LENGTH = 50,325 FT. = 9.531 MILE

STATE OF ILLINOIS
DEPARTMENT OF TRANSPORTATION
DIVISION OF HIGHWAYS

SUBMITTED 12-14 20 12
Paul A. Carlson
DEPUTY DIRECTOR OF HIGHWAYS, REGION ENGINEER

Feb 1 20 13
John D. Baranzelli, PE, Inc.
ENGINEER OF DESIGN AND ENVIRONMENT

Feb 1 20 13
Omer Osman, PE, Inc.
DIRECTOR OF HIGHWAYS, CHIEF ENGINEER

PRINTED BY THE AUTHORITY
OF THE STATE OF ILLINOIS

GENERAL NOTES

PLAN DIMENSIONS AND DETAILS RELATIVE TO THE EXISTING PLANS ARE SUBJECT TO ROUTINE VARIATIONS. THE CONTRACTOR SHALL FIELD VERIFY EXISTING DIMENSIONS AND DETAILS AFFECTING NEW CONSTRUCTION AND MAKE NECESSARY APPROVED ADJUSTMENTS PRIOR TO CONSTRUCTION OF ORDERING OF MATERIALS. SUCH VARIATIONS SHALL NOT BE CAUSE FOR ADDITIONAL COMPENSATION FOR A CHANGE IN THE SCOPE OF THE WORK. HOWEVER, THE CONTRACTOR WILL BE PAID FOR THE QUANTITY FURNISHED BASED UPON THE UNIT BID PRICE.

ANY REFERENCE TO A STANDARD IN THESE PLANS SHALL BE INTERPRETED TO MEAN THE EDITION AS INDICATED BY THE SUBNUMBER SHOWN IN THE LIST OF STANDARDS OR THE COPY INCLUDED IN THESE PLANS.

THE FOLLOWING RATES OF APPLICATION HAVE BEEN USED IN CALCULATING PLAN QUANTITIES FOR CRACK FILLING:

CRACK FILLING	0.35	POUNDS / FOOT
---------------	------	---------------

STATE OF ILLINOIS
DEPARTMENT OF TRANSPORTATION
DISTRICT THREE

PREPARED BY: Tom Branil
DISTRICT STUDIES & PLANS ENGINEER

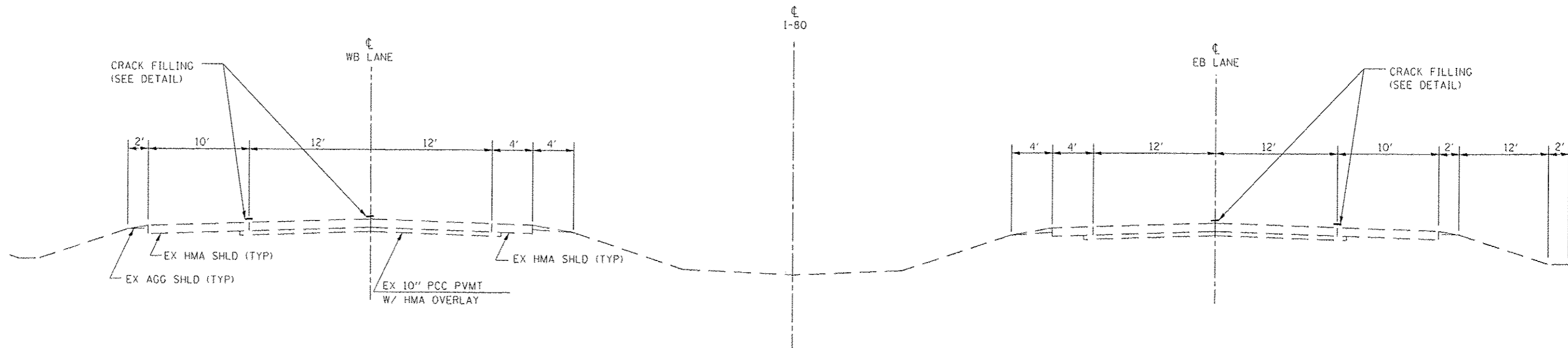
DATE: 12-14-12

EXAMINED BY: [Signature]
DISTRICT CONSTRUCTION ENGINEER

[Signature]
DISTRICT MATERIALS ENGINEER

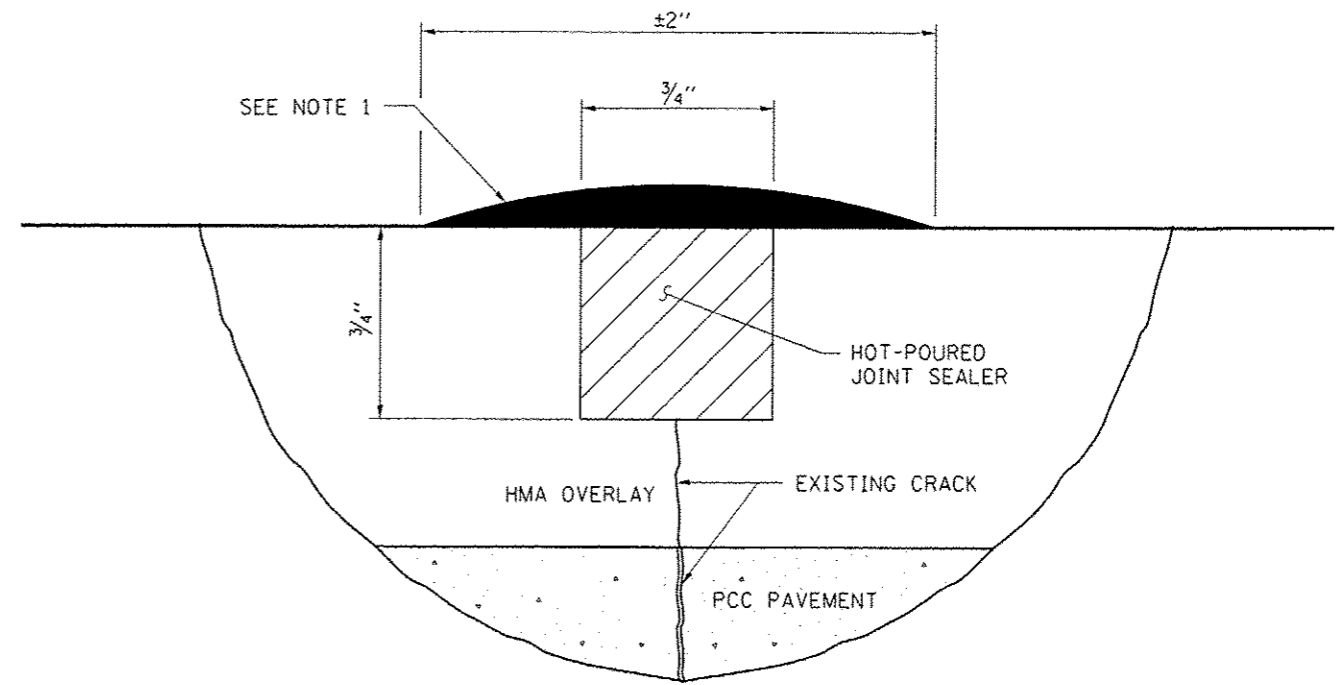
[Signature]
DISTRICT OPERATIONS ENGINEER

FILE NAME *	USER NAME * co-pantardj	DESIGNED -	REVISED -	STATE OF ILLINOIS DEPARTMENT OF TRANSPORTATION	GENERAL NOTES	F.A.I. RTE.	SECTION	COUNTY	TOTAL SHEETS	SHEET NO.	
c:\pvt\work\p1dot\co-pantardj\0321123\12	066068-sh1-cover.dgn	DRAWN -	REVISED -			80	03 CRACK SEAL 2013-2	BUREAU	7	2	
	PLOT SCALE * 100.0000 / in.	CHECKED -	REVISED -			SCALE: _____ SHEET _____ OF _____ SHEETS STA. _____ TO STA. _____					
	PLOT DATE * 12/11/2012	DATE -	REVISED -			ILLINOIS FED. AID PROJECT CONTRACT NO. 66C6P					



PROPOSED TYPICAL SECTION
STA 0+00 TO STA 503+25

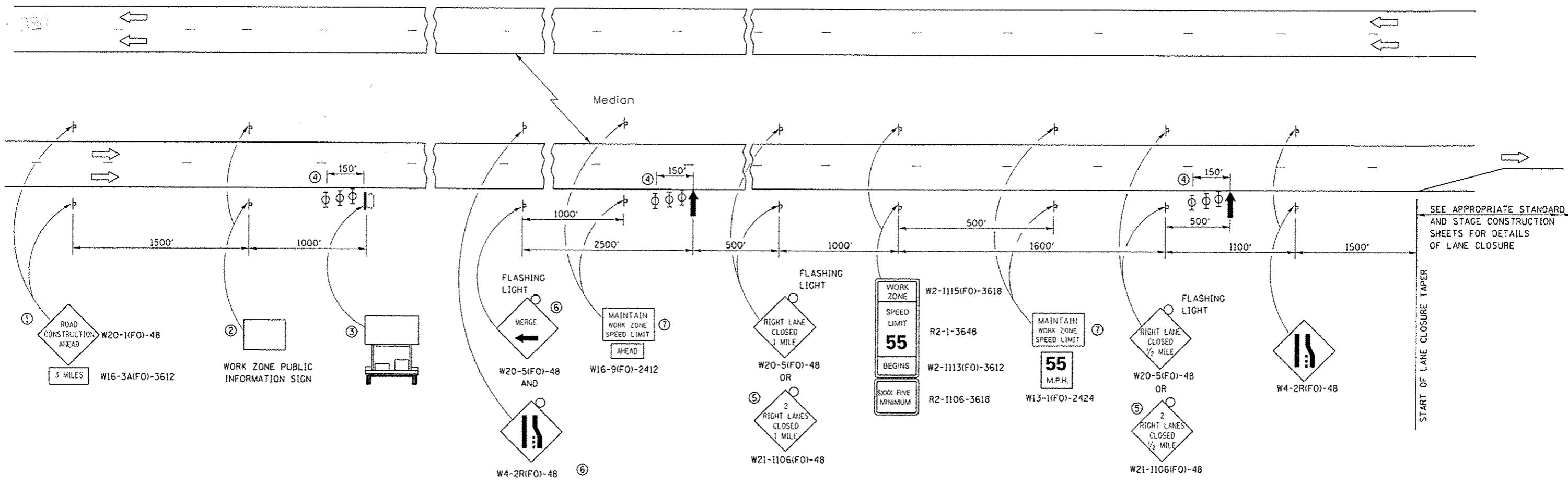
FILE NAME =	USER NAME = carpentardj	DESIGNED -	REVISED -	STATE OF ILLINOIS DEPARTMENT OF TRANSPORTATION	TYPICAL SECTION		F.A.I. RTE.	SECTION	COUNTY	TOTAL SHEETS	SHEET NO.
c:\pwork\pwork\carpentardj\d0321123\666668-sh1-typic01.dgn	PLOT SCALE = 100.0000 "/>										



CRACK ROUTING AND SEALING DETAIL

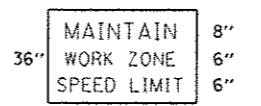
NOTE 1
 THE CRACK OR JOINT SHALL BE SLIGHTLY OVERFILLED AND IMMEDIATELY SQUEEGEED TO PROVIDE A "BAND-AID" TYPE EFFECT APPROXIMATELY TWO INCHES WIDE, FLUSH WITH THE PAVEMENT SURFACE, AND WITH THE EDGES FEATHERED OUT.

FILE NAME =	USER NAME = carpenterdj	DESIGNED -	REVISED -	STATE OF ILLINOIS DEPARTMENT OF TRANSPORTATION	DETAILS	F.A.I. RTE.	SECTION	COUNTY	TOTAL SHEETS	SHEET NO.	
ci:\pw\work\p1dot\carpenterdj\0321123\066C68-sht-details.dgn		DRAWN -	REVISED -			80	D3 CRACK SEAL 2013-2	BUREAU	7	6	
PLOT SCALE = 100.0000 / in.		CHECKED -	REVISED -			CONTRACT NO. 66C68					
PLOT DATE = 12/11/2012		DATE -	REVISED -			ILLINOIS FED. AID PROJECT					
SCALE: _____ SHEET NO. ____ OF ____ SHEETS STA. _____ TO STA. _____											



- ① THE ROAD CONSTRUCTION AHEAD SIGN SHALL BE LOCATED 3 MILES IN ADVANCE OF THE PROJECT LIMITS.
- ② THE MESSAGE AND SIZE OF THE WORK ZONE PUBLIC INFORMATION SIGN SHALL BE AS SPECIFIED BY THE DEPARTMENT.
- ③ TO BE PLACED IN THE MEDIAN WHEN FEASIBLE, THE MESSAGE BOARD SHALL BE USED TO DISPLAY STATUS OF LANES WITHIN THE PROJECT. THE PRIMARY MESSAGES SHALL BE:
 "RIGHT LANE CLOSED" / " x MILES AHEAD"
 "LEFT LANE CLOSED" / " x MILES AHEAD"
 "ALL LANES OPEN"
- ④ THREE, TYPE II BARRICADES, DRUMS, OR VERTICAL BARRICADES AT 50' CENTERS.
- ⑤ THIS SIGN SHALL BE USED WHEN 2 LANES ARE CLOSED.
- ⑥ WHEN THE LEFT LANE IS CLOSED, SWITCH THESE TWO SIGNS AND THE DIRECTION OF THE MERGE ARROW.

⑦ 48"x36" FLUORESCENT ORANGE SIGN WITH BLACK LETTERS.
48"



- ↑ ARROW BOARD
- ☐ PORTABLE CHANGEABLE MESSAGE SIGN
- ⊥ SIGN
- ⊕ TYPE II BARRICADE, DRUM, OR VERTICAL BARRICADE WITH MONODIRECTIONAL FLASHING LIGHT

GENERAL NOTE:

THIS STANDARD IS USED WHERE AT ANY TIME A LANE IS CLOSED ON A FREEWAY/EXPRESSWAY.

WHEN THE LEFT LANE IS CLOSED, LEFT LANE CLOSED SIGNS SHALL BE SUBSTITUTED FOR THE RIGHT LANE CLOSED SIGNS.

THE FIRST TWO SIGNS AND THE MESSAGE BOARD ARE STATIONARY. THE OTHER SIGNS AND ARROWBOARDS SHALL BE MOVED AS NECESSARY TO MAINTAIN THE REQUIRED DISTANCE FROM THE START OF THE LANE CLOSURE TAPER(S).

SEE SPECIAL PROVISIONS.

ALL DIMENSIONS ARE IN INCHES UNLESS OTHERWISE SHOWN.

FILE NAME : c:\pw\work\pwidot\carpentardj\d0321123\666C68.sht-details.dgn	USER NAME : carpentardj	DESIGNED - ---	REVISED - ---	STATE OF ILLINOIS DEPARTMENT OF TRANSPORTATION	STANDARD 701400 (SPECIAL)	F.A.J. RTE. 80	SECTION DJ CRACK SEAL 2013-2	COUNTY BUREAU	TOTAL SHEETS 7	SHEET NO. 7
PLOT SCALE : 100.0000' / 1"	CHECKED - ---	REVISED - ---	SCALE: _____ SHEET _____ OF _____ SHEETS			STA. _____ TO STA. _____	CONTRACT NO., 66C68			
PLOT DATE : 12/11/2012	DATE - ---	REVISED - ---	ILLINOIS FED. AID PROJECT							