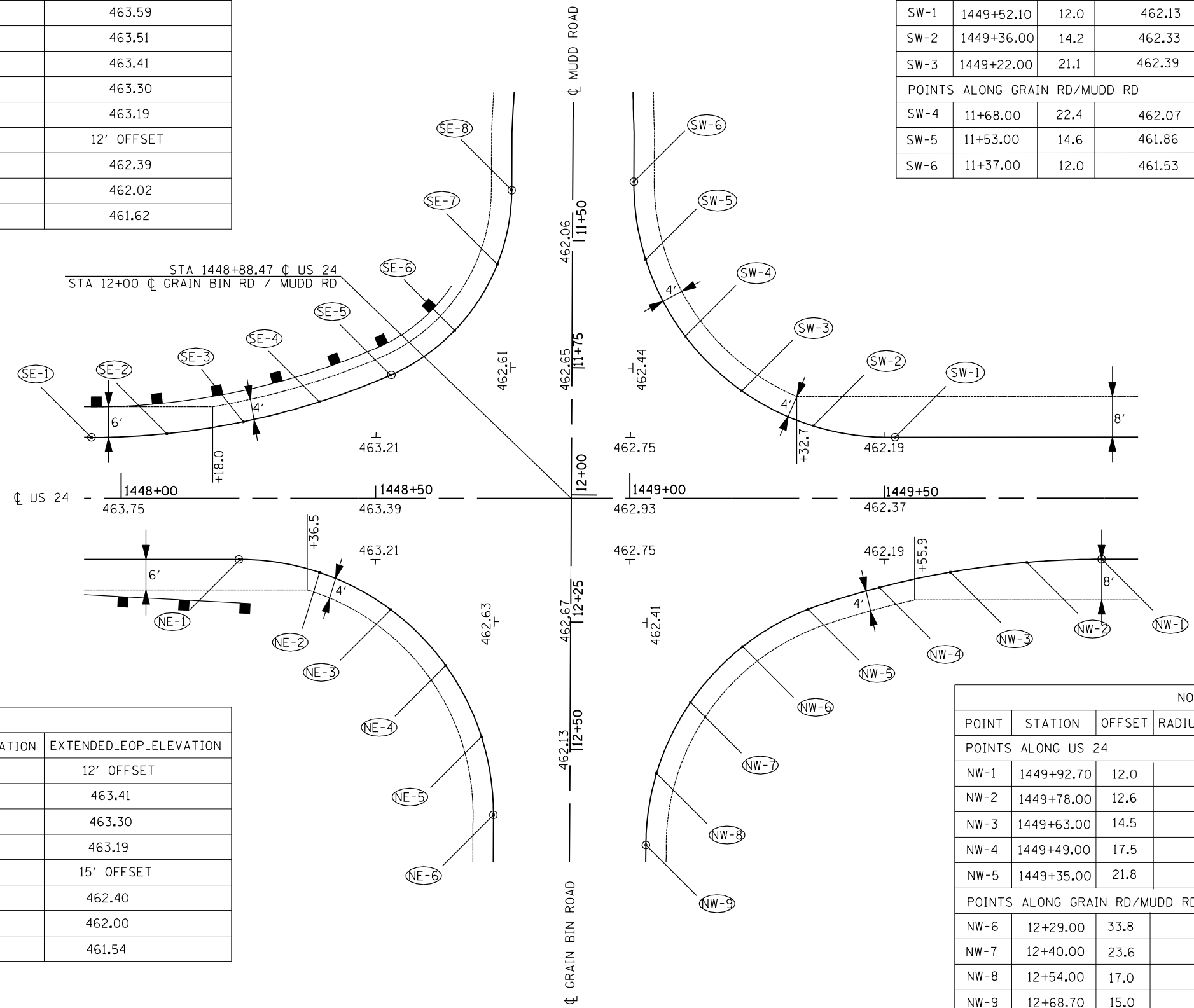




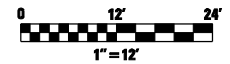
SOUTH EAST				
POINT	STATION	OFFSET	RADIUS_EOP_ELEVATION	EXTENDED_EOP_ELEVATION
POINTS ALONG US 24				12' OFFSET
SE-1	1447+94.10	12.0	463.59	463.59
SE-2	1448+09.00	12.7	463.50	463.51
SE-3	1448+24.00	15.1	463.36	463.41
SE-4	1448+39.00	19.0	463.20	463.30
SE-5	1448+53.00	24.2	463.01	463.19
POINTS ALONG GRAIN RD/MUDD RD				12' OFFSET
SE-6	11+67.00	22.9	462.30	462.39
SE-7	11+54.00	14.5	461.99	462.02
SE-8	11+40.00	12.0	461.62	461.62

SOUTH WEST				
POINT	STATION	OFFSET	RADIUS_EOP_ELEVATION	EXTENDED_EOP_ELEVATION
POINTS ALONG US 24				12' OFFSET
SW-1	1449+52.10	12.0	462.13	462.16
SW-2	1449+36.00	14.2	462.33	462.36
SW-3	1449+22.00	21.1	462.39	462.53
POINTS ALONG GRAIN RD/MUDD RD				12' OFFSET
SW-4	11+68.00	22.4	462.07	462.27
SW-5	11+53.00	14.6	461.86	461.91
SW-6	11+37.00	12.0	461.53	461.53



NORTH EAST				
POINT	STATION	OFFSET	RADIUS_EOP_ELEVATION	EXTENDED_EOP_ELEVATION
POINTS ALONG US 24				12' OFFSET
NE-1	1448+23.47	12.0	463.41	463.41
NE-2	1448+39.00	14.6	463.26	463.30
NE-3	1448+53.00	21.9	463.04	463.19
POINTS ALONG GRAIN RD/MUDD RD				15' OFFSET
NE-4	12+33.00	24.5	462.33	462.40
NE-5	12+47.00	17.4	461.97	462.00
NE-6	12+63.00	15.0	461.54	461.54

NORTH WEST				
POINT	STATION	OFFSET	RADIUS_EOP_ELEVATION	EXTENDED_EOP_ELEVATION
POINTS ALONG US 24				12' OFFSET
NW-1	1449+92.70	12.0	461.70	461.70
NW-2	1449+78.00	12.6	461.84	461.85
NW-3	1449+63.00	14.5	461.98	462.02
NW-4	1449+49.00	17.5	462.12	462.20
NW-5	1449+35.00	21.8	462.22	462.37
POINTS ALONG GRAIN RD/MUDD RD				15' OFFSET
NW-6	12+29.00	33.8	461.97	462.32
NW-7	12+40.00	23.6	461.88	462.06
NW-8	12+54.00	17.0	461.69	461.73
NW-9	12+68.70	15.0	461.39	461.39



FILE NAME = SFILES



USER NAME = #USER#	DESIGNED - JL / RY	REVISED -
DRAWN - JL / RY	CHECKED - JES	REVISED -
PLOT SCALE = #SCALE#	DATE - 12-17-2012	REVISED -
PLOT DATE = #DATE#		

**STATE OF ILLINOIS
DEPARTMENT OF TRANSPORTATION**

INTERSECTION DETAILS
US RTE 24 OVER BIG SISTER CREEK & LITTLE SISTER CREEK

SCALE: SHEET NO. 1 OF 3 SHEETS STA. TO STA.

F.A.P. RTE.	SECTION	COUNTY	TOTAL SHEETS	SHEET NO.
317	(137BR, BR-1) BR	FULTON	118	36
CONTRACT NO. 68699				
ILLINOIS FED. AID PROJECT				