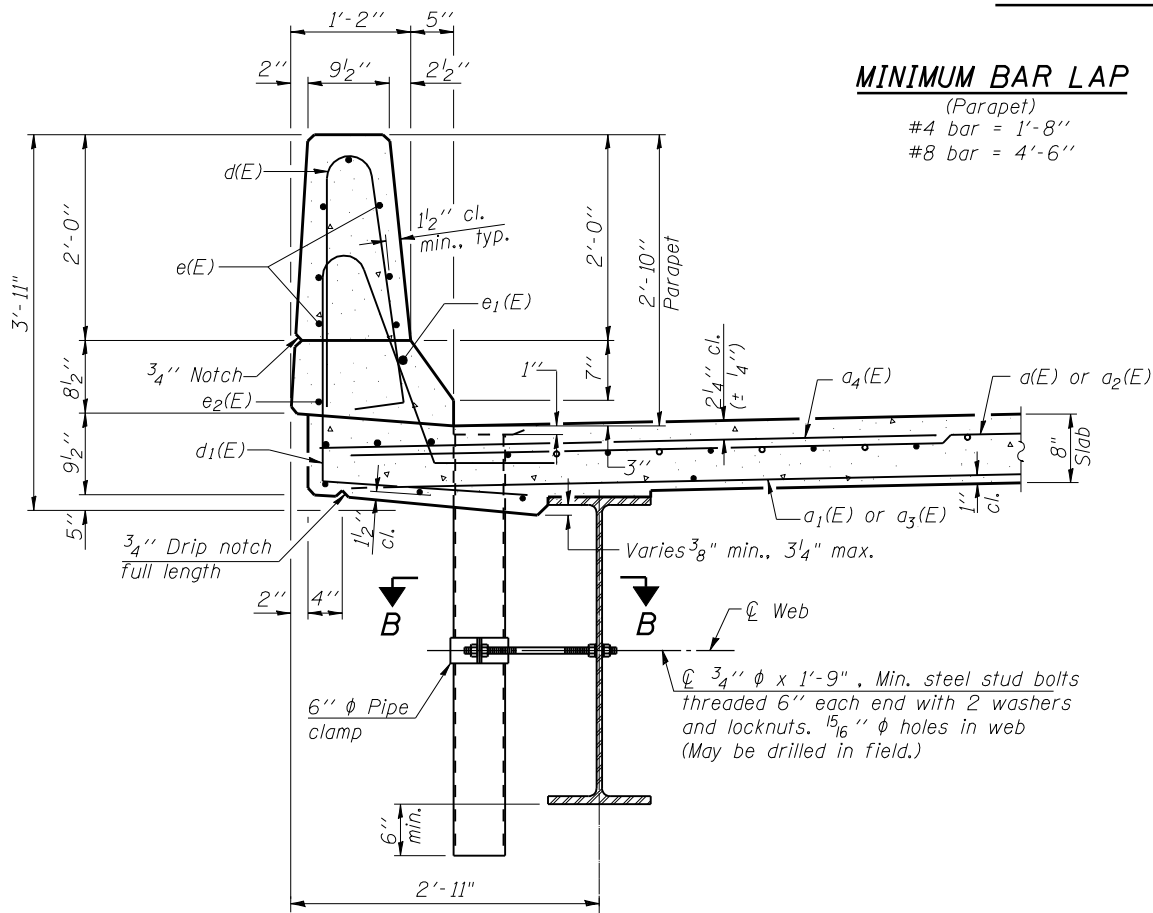


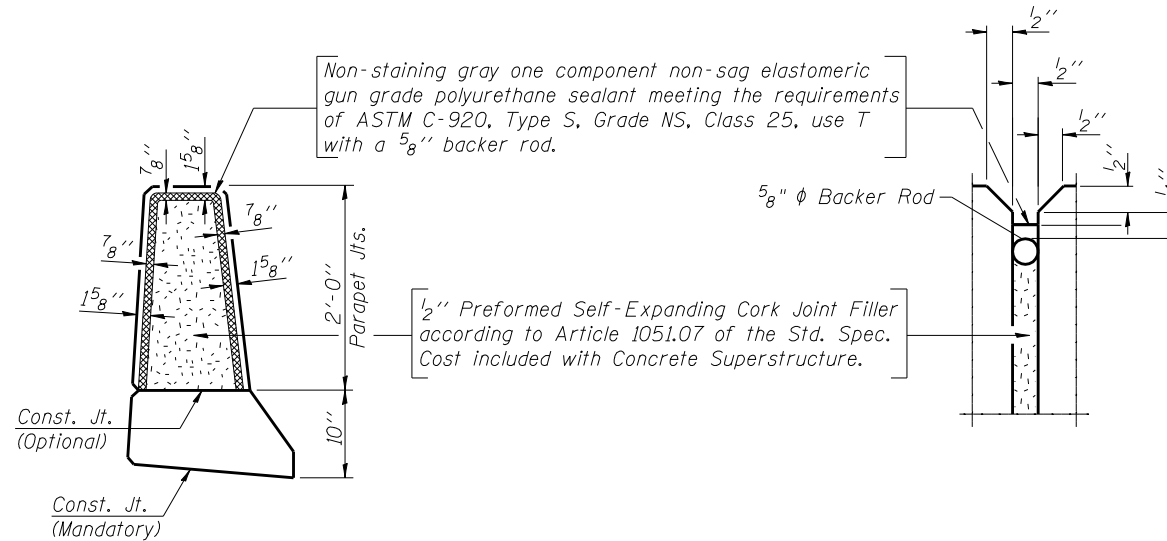
INSIDE ELEVATION OF PARAPET



SECTION THRU PARAPET

MINIMUM BAR LAP

(Parapet)
 #4 bar = 1'-8"
 #8 bar = 4'-6"



PARAPET JOINT DETAILS

Notes:
 Floor drains need not be painted.
 Fiberglass pipe shall conform to ASTM D 2996, with short-time rupture strength hoop tensile stress of 30,000 p.s.i. minimum.
 Galvanize clamping device according to AASHTO M232. Cost of clamping device and inserts is included with Floor Drains.

SUPERSTRUCTURE BILL OF MATERIAL

| Bar | No. | Size | Length | Shape |
|----------------------------------|-----|---------|---------|-------|
| a(E) | 145 | #5 | 17'-9" | — |
| a1(E) | 95 | #5 | 17'-3" | — |
| a2(E) | 145 | #5 | 20'-1" | — |
| a3(E) | 95 | #5 | 19'-7" | — |
| a4(E) | 284 | #6 | 6'-6" | — |
| a5(E) | 2 | #5 | 18'-4" | — |
| a6(E) | 2 | #5 | 20'-10" | — |
| b(E) | 132 | #5 | 28'-7" | — |
| b1(E) | 144 | #5 | 22'-3" | — |
| d(E) | 174 | #5 | 5'-7" | ┆ |
| d1(E) | 174 | #5 | 7'-6" | ┆ |
| e(E) | 56 | #4 | 19'-6" | — |
| e1(E) | 6 | #8 | 29'-0" | — |
| e2(E) | 6 | #4 | 28'-3" | — |
| m(E) | 4 | #6 | 18'-6" | — |
| m1(E) | 10 | #6 | 18'-7" | — |
| m3(E) | 8 | #6 | 6'-6" | — |
| m4(E) | 4 | #6 | 2'-8" | — |
| m5(E) | 4 | #6 | 21'-0" | — |
| m6(E) | 10 | #6 | 21'-1" | — |
| m8(E) | 2 | #6 | 1'-9" | — |
| m9(E) | 2 | #6 | 4'-2" | — |
| s(E) | 82 | #5 | 6'-7" | ┆ |
| s1(E) | 72 | #4 | 9'-2" | ┆ |
| v(E) | 74 | #5 | 3'-7" | ┆ |
| Bar Splicers | | Each | 338 | |
| Reinforcement Bars, Epoxy Coated | | Pound | 25,410 | |
| Concrete Superstructure | | Cu. Yd. | 130.0 | |

Bars indicated thus 1x3-#5 etc. indicates 1 line of bars with 3 lengths per line.

