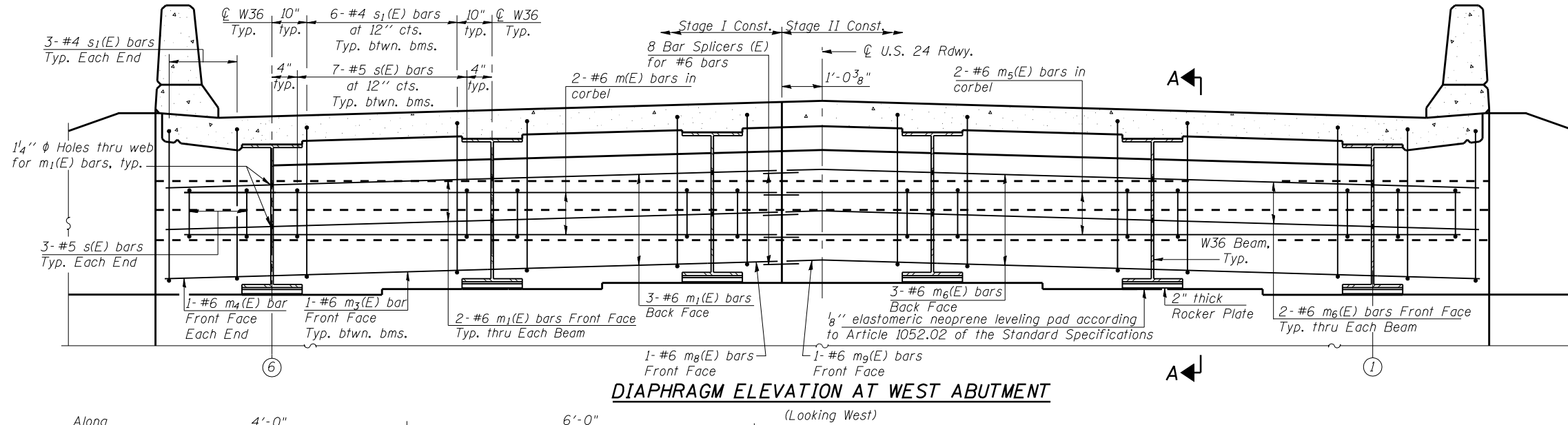
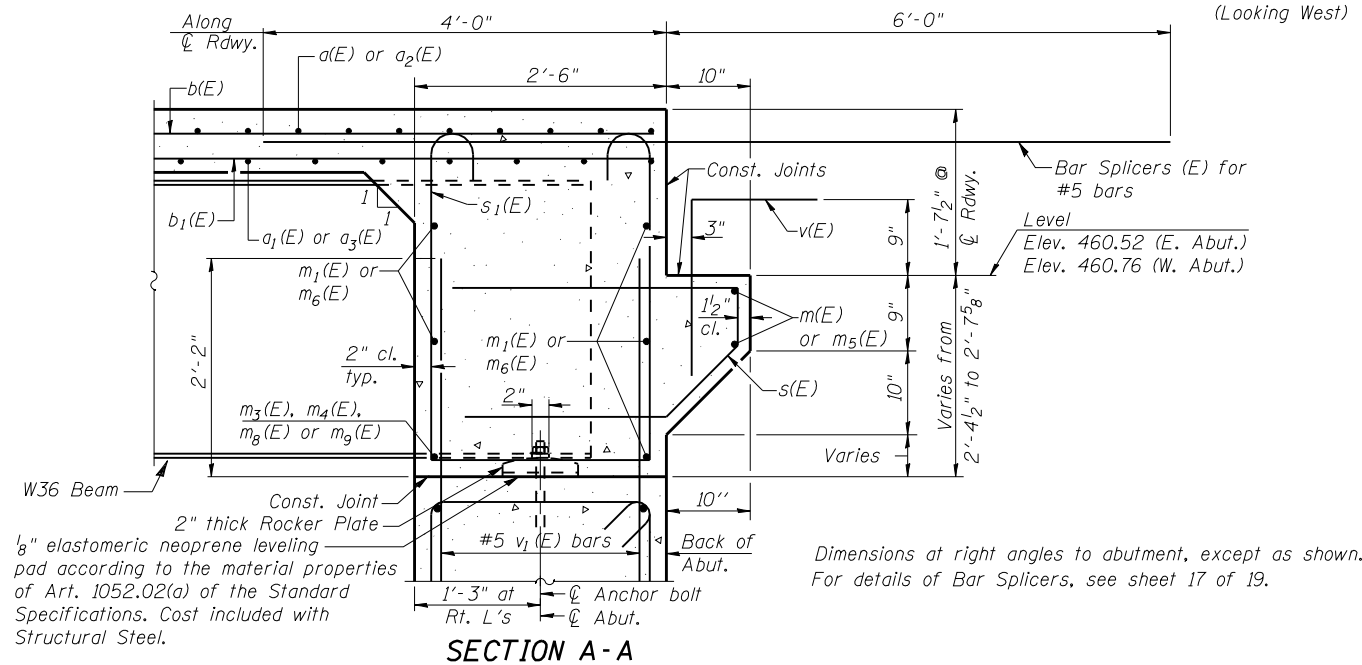


**DIAPHRAGM ELEVATION AT EAST ABUTMENT**  
(Looking East)



**DIAPHRAGM ELEVATION AT WEST ABUTMENT**  
(Looking West)



Notes:  
 Reinforcement bars in diaphragm are billed with superstructure on sheet 8 of 19.  
 Concrete in diaphragm is included with Concrete Superstructure on sheet 8 of 19.  
 For details of bars s(E) & s1(E) see sheet 8 of 19.  
 The s(E) and s1(E) bars shall be placed parallel to the beams. Spacing for these bars shall be at right angles to the beams.

**MIN. BAR LAP**  
 #6 bar = 3'-4"

Dimensions at right angles to abutment, except as shown.  
 For details of Bar Splicers, see sheet 17 of 19.