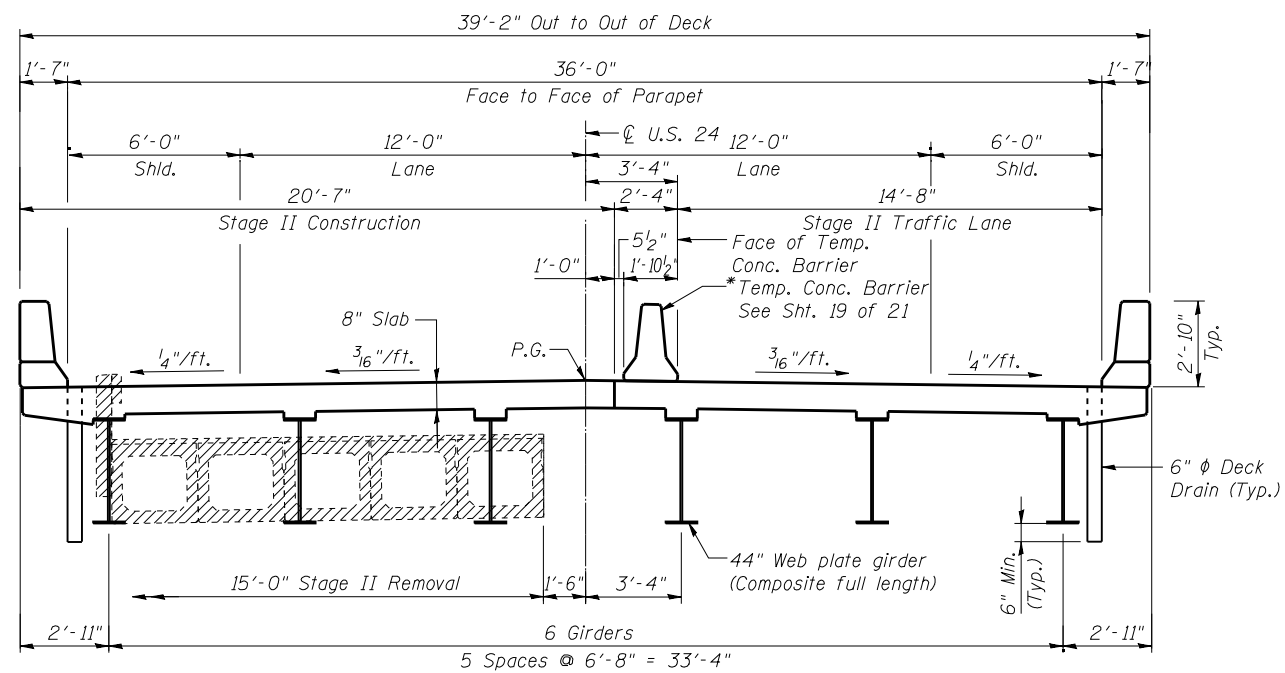
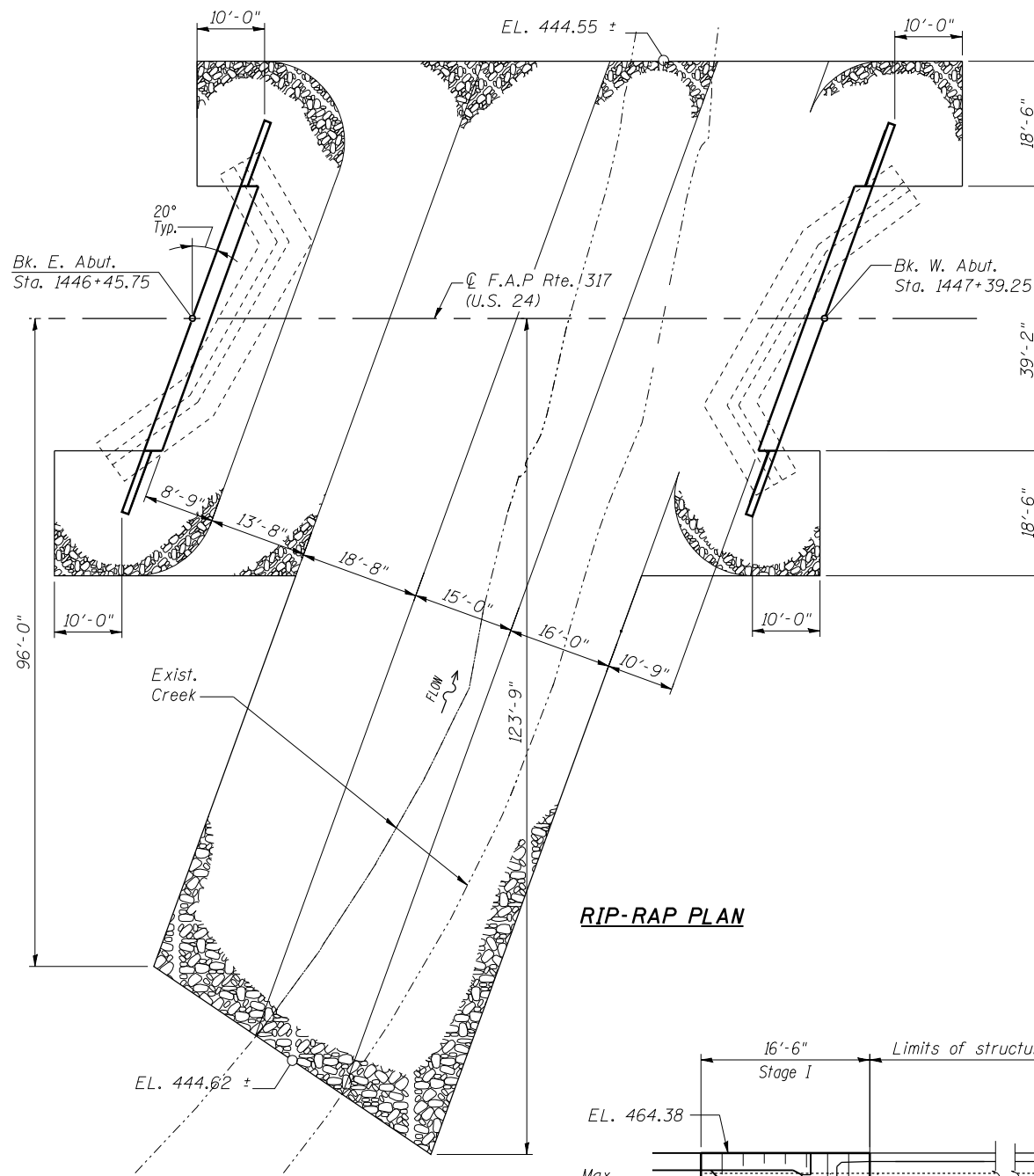


CROSS SECTION - STAGE I
(Looking West)

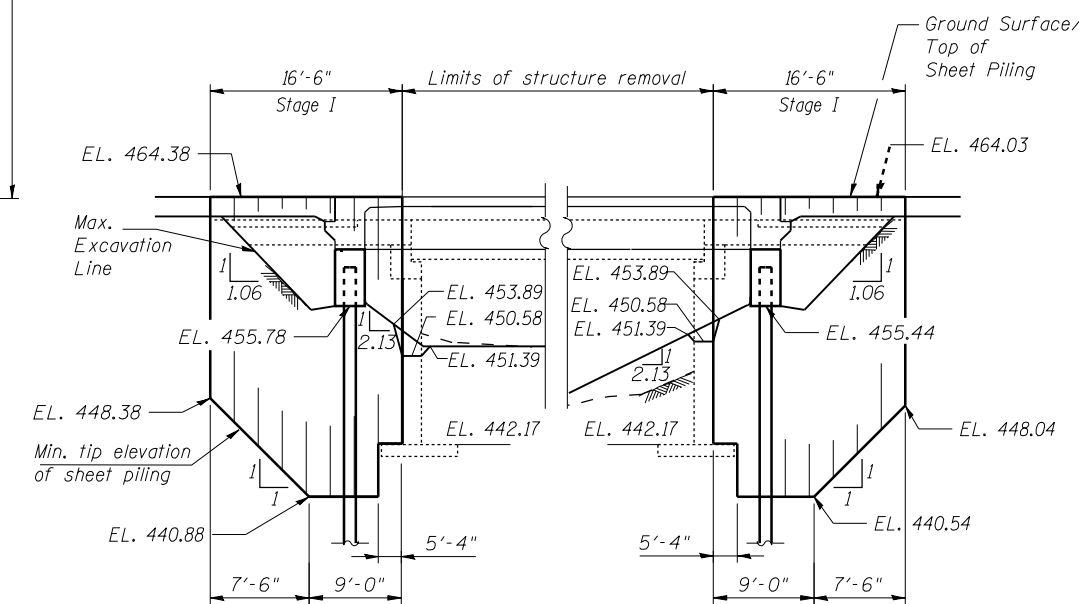
* For temporary concrete barrier quantities, see roadway plan



CROSS SECTION - STAGE II
(Looking West)



RIP-RAP PLAN



TEMPORARY SHEET PILING ELEVATION
(Looking South)

- Notes:**
1. If the Contractor chooses to alter the temporary cantilevered sheet piling design requirements shown on the plans, a design submittal including plan details and calculations will be required for review and acceptance by the engineer.
 2. The Contractor shall connect the first sheet to the existing abutment wall to ensure stability of sheets driven to the top of the existing footing. This connection shall be reviewed and accepted by the Engineer and included in the cost for Temporary Sheet Piling.