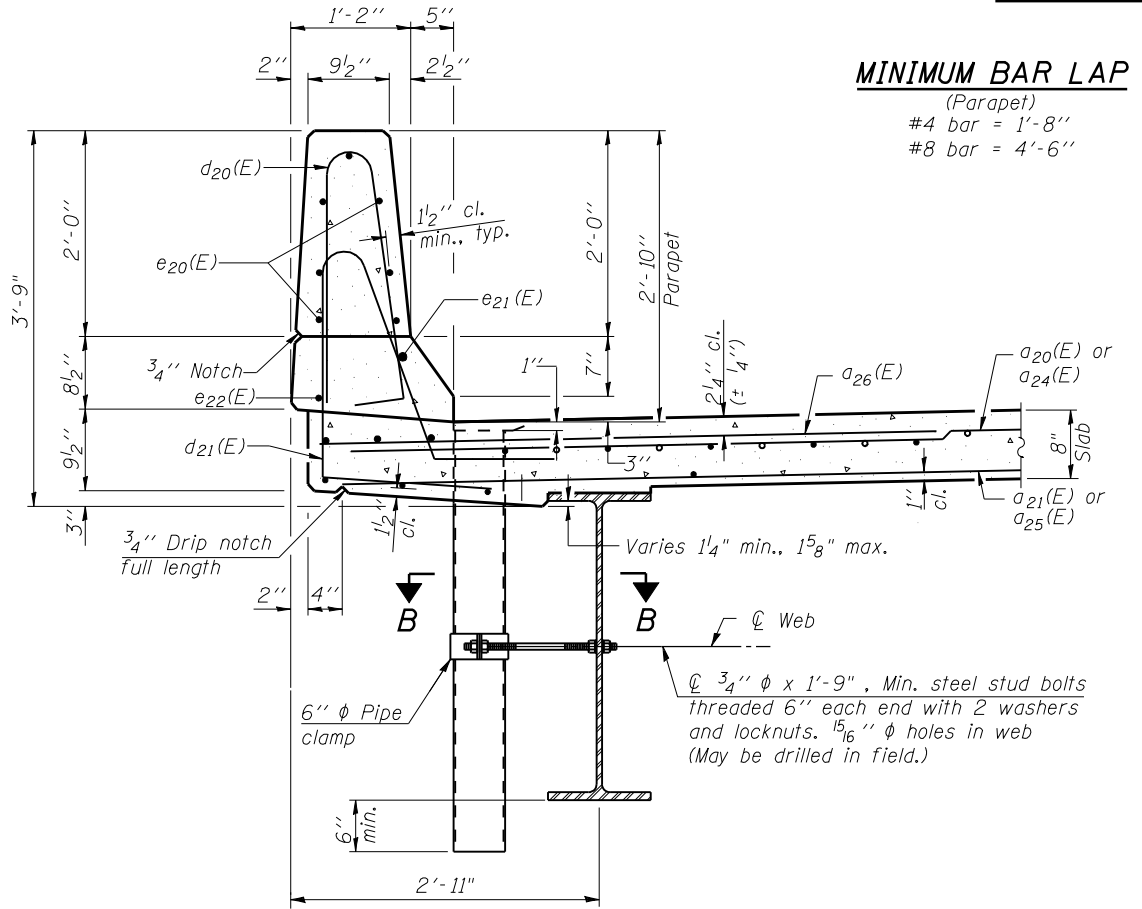
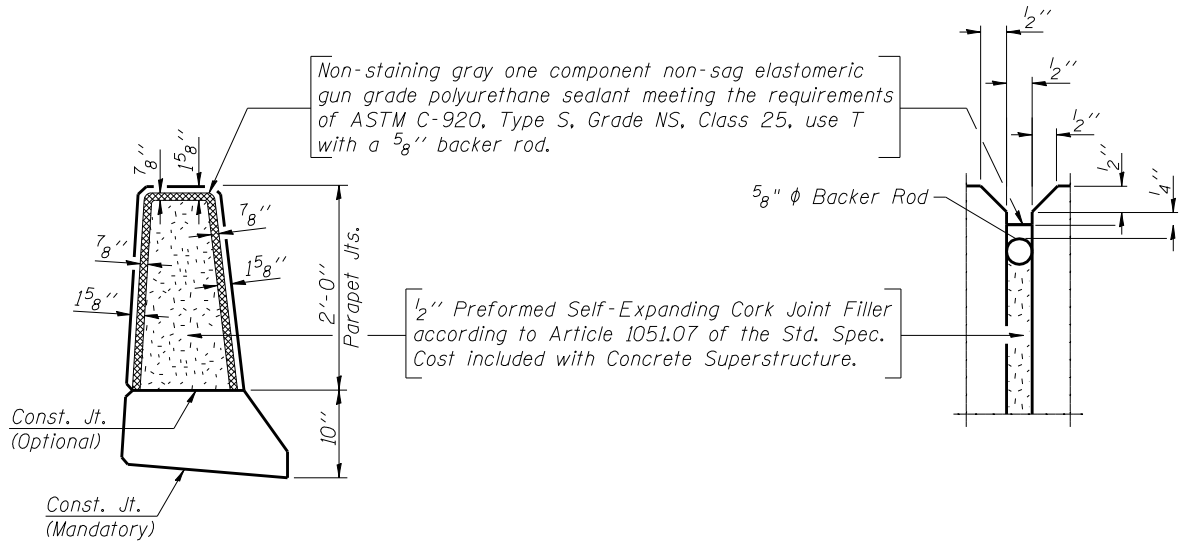


INSIDE ELEVATION OF PARAPET



SECTION THRU PARAPET

MINIMUM BAR LAP
(Parapet)
#4 bar = 1'-8"
#8 bar = 4'-6"



PARAPET JOINT DETAILS

Notes:
Floor drains need not be painted.
Fiberglass pipe shall conform to ASTM D 2996, with short-time rupture strength hoop tensile stress of 30,000 p.s.i. minimum.
Galvanize clamping device according to AASHTO M232. Cost of clamping device and inserts is included with Floor Drains.

**SUPERSTRUCTURE
BILL OF MATERIAL**

Bar	No.	Size	Length	Shape
a20(E)	171	#5	17'-9"	—
a21(E)	111	#5	17'-3"	—
a22(E)	4	#5	18'-4"	—
a23(E)	4	#5	21'-0"	—
a24(E)	171	#5	20'-3"	—
a25(E)	111	#5	19'-9"	—
a26(E)	338	#6	6'-6"	—
b20(E)	176	#5	25'-9"	—
b21(E)	180	#5	21'-3"	—
d20(E)	204	#5	5'-7"	⌋
d21(E)	204	#5	7'-6"	⌋
e20(E)	70	#4	18'-5"	—
e21(E)	6	#8	35'-7"	—
e22(E)	8	#4	25'-3"	—
m20(E)	4	#6	19'-0"	—
m22(E)	10	#6	19'-1"	—
m23(E)	8	#6	6'-10"	—
m24(E)	4	#6	2'-9"	—
m25(E)	4	#6	21'-7"	—
m27(E)	10	#6	21'-8"	—
m28(E)	2	#6	1'-9"	—
m29(E)	2	#6	4'-4"	—
s20(E)	72	#5	6'-7"	⌋
s21(E)	72	#4	9'-3"	⌋
v20(E)	78	#5	3'-7"	⌋
Bar Splicers	Each		380	
Reinforcement Bars, Epoxy Coated Concrete Superstructure	Pound		29,790	
	Cu. Yd.		150.0	

Bars indicated thus 1x3-#5 etc. indicates 1 line of bars with 3 lengths per line.

