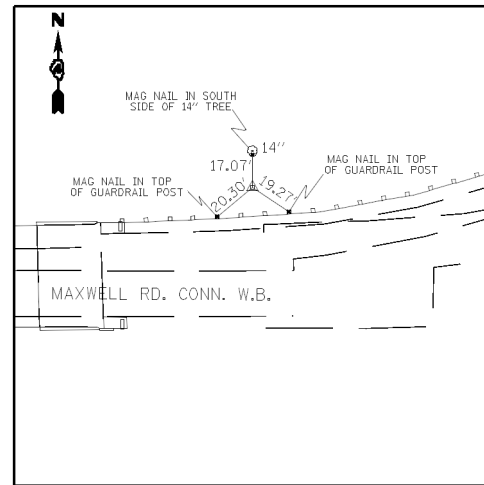
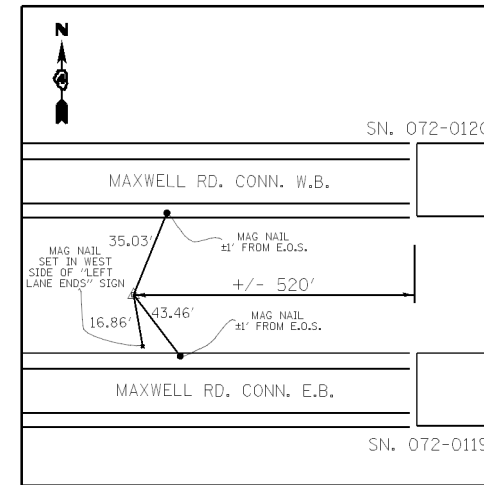


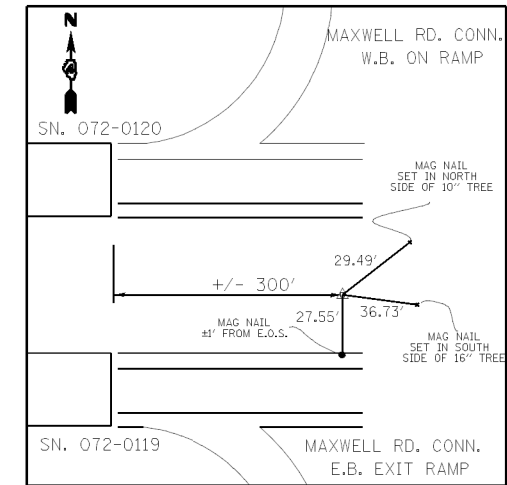
CP # 1
 SET 5/8" I.P. W/ CAP FLUSH
 1,467,158.127 N
 2,432,505.815 E
 ELEV. = 693.73



CP # 2
 SET 5/8" I.P. W/ CAP FLUSH
 1,467,164.926 N
 2,432,924.627 E
 ELEV. = 688.29



P.O.T. STA 129+95.53
 SET 5/8" I.P.
 1,467,064.051 N
 2,432,040.699 E



P.O.T. STA 140+64.30
 SET 5/8" I.P.
 1,467,066.170 N
 2,433,109.468 E

| | | | | | | | | | | | | |
|-------------------------------|------------|-----------|---|--|-------------------------|-------------|---------|------------------------------|---------------|--------------------|----|----|
| USER NAME = kresthbr | DESIGNED - | REVISED - | STATE OF ILLINOIS DEPARTMENT OF TRANSPORTATION | ALIGNMENT, TIES AND BENCHMARKS MAXWELL ROAD CONNECTOR OVER I-474 | | F.A.I. RTE. | SECTION | COUNTY | TOTAL SHEETS | SHEET NO. | | |
| PLOT SCALE = 100,0000' / 1in. | DRAWN - | REVISED - | | SCALE: NONE | SHEET NO. 2 OF 2 SHEETS | STA. | TO STA. | 474 | (72-3HB-1), I | PEORIA | 89 | 11 |
| PLOT DATE = 12/14/2012 | CHECKED - | REVISED - | | | | | | MAXWELL RD. CONN. OVER I-474 | | CONTRACT NO. 68883 | | |
| | DATE - | REVISED - | | | | | | ILLINOIS FED. AID PROJECT | | | | |