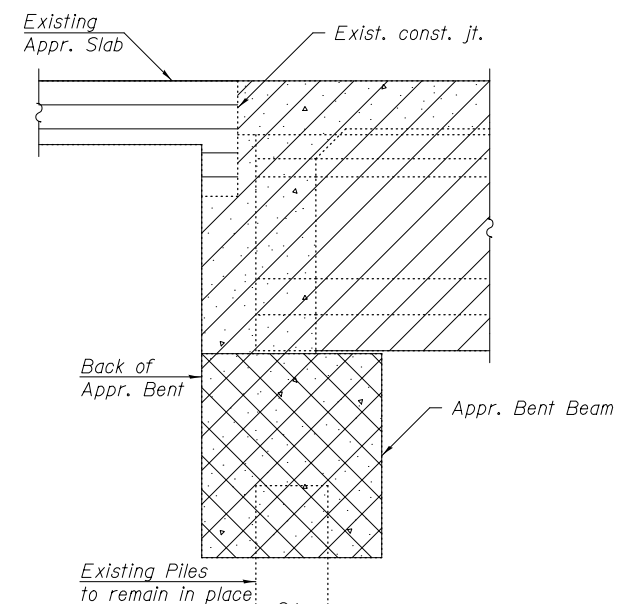
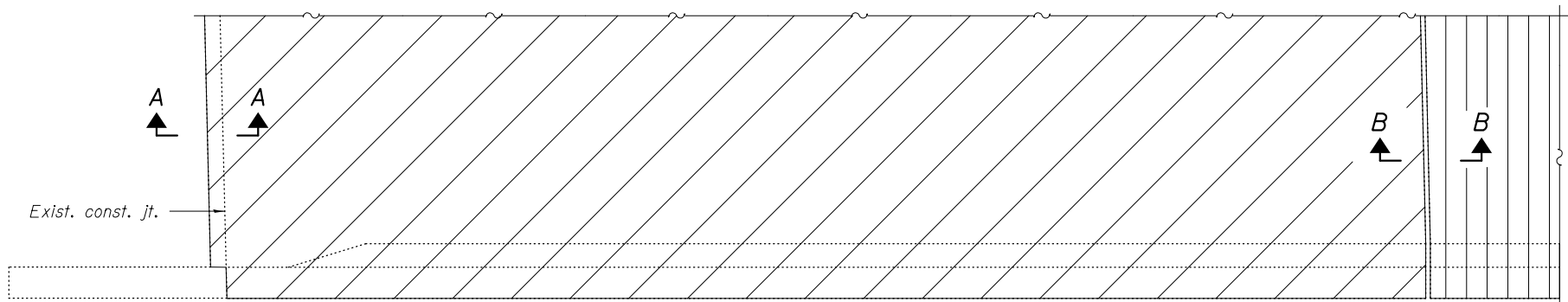


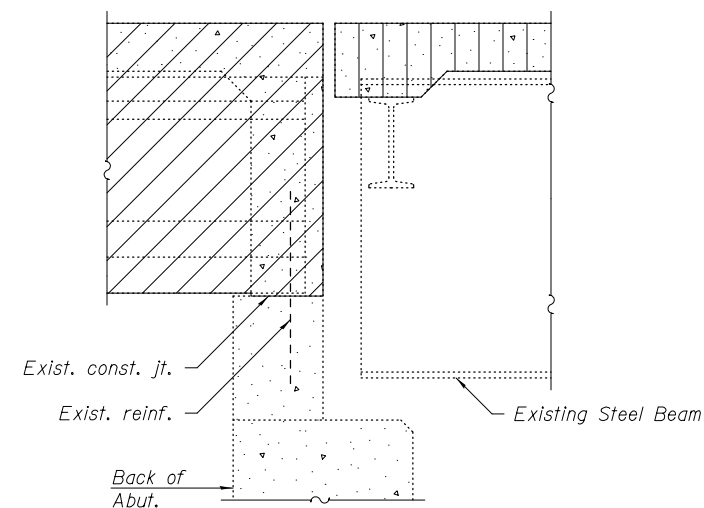
**PARTIAL PLAN**  
(Showing substructure removal at approach bent)



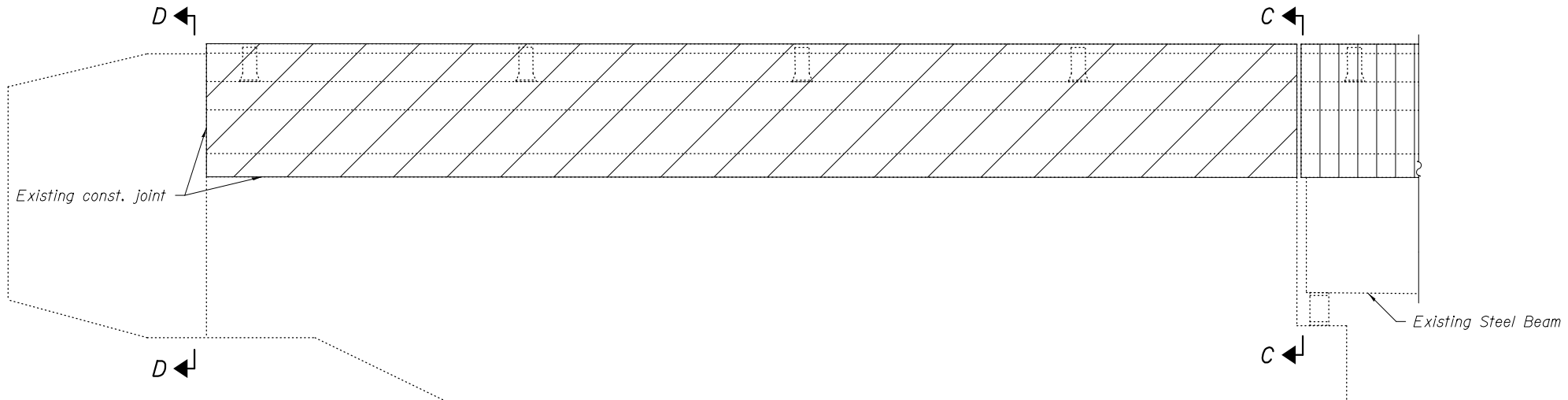
**SECTION A-A**



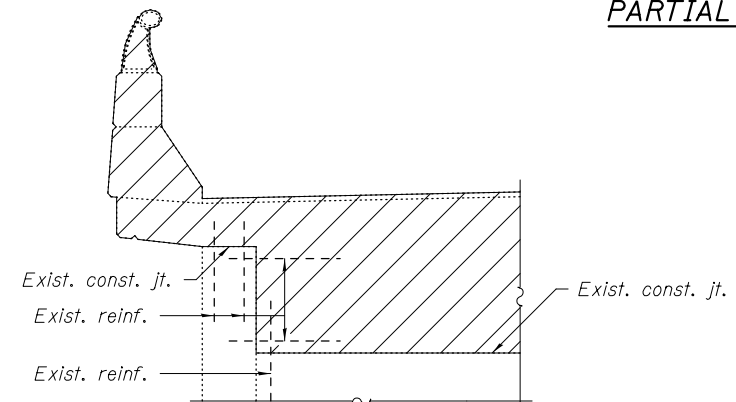
**PARTIAL PLAN**  
(Showing superstructure removal)



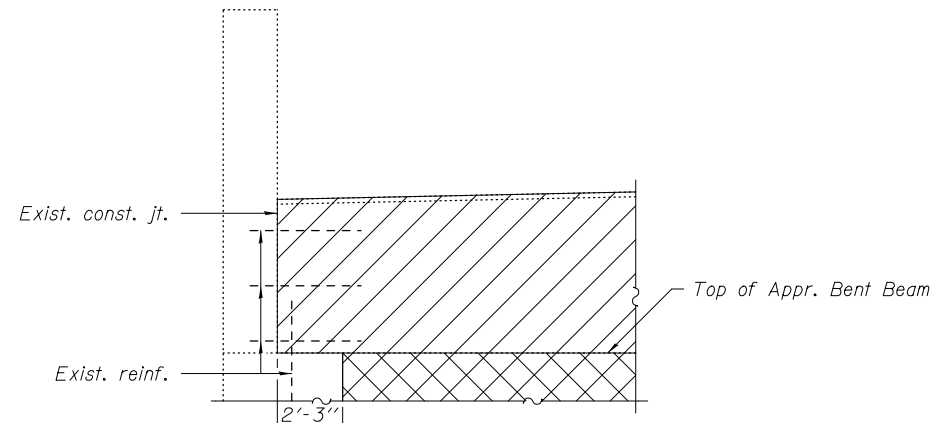
**SECTION B-B**



**PARTIAL ELEVATION**



**PARTIAL SECTION C-C**



**PARTIAL SECTION D-D**

- Denotes "Removal of Existing Superstructures".
- Denotes "Concrete Removal".
- Denotes "Removal of Existing Concrete Deck".
- Denotes "Approach Slab Removal".

Note:  
Details typical at all abutments.

FILE NAME = *FILE*	USER NAME = *USER*	DESIGNED <i>K.A. KLUES</i>	REVISED - 12/17/12 DHC/JKS	<b>STATE OF ILLINOIS DEPARTMENT OF TRANSPORTATION</b>		<b>REMOVAL DETAILS STRUCTURE NOS. 072-0119 (E.B.) &amp; 072-0120 (W.B.)</b>	F.A.I. RTE.	SECTION	COUNTY	TOTAL SHEETS	SHEET NO.	
		CHECKED <i>E.M. LAGEMANN</i>	Del. Staging (IDOT)				474	(72-3HB-1),I	PEORIA	88	34	
		PLOT SCALE =	DRAWN <i>K.A. KLUES</i>									
		PLOT DATE = *DATE*	CHECKED <i>E.M. LAGEMANN</i>									
						SHEET NO. 18 OF 62 SHEETS	CONTRACT NO. 68883					
ILLINOIS FED. AID PROJECT												