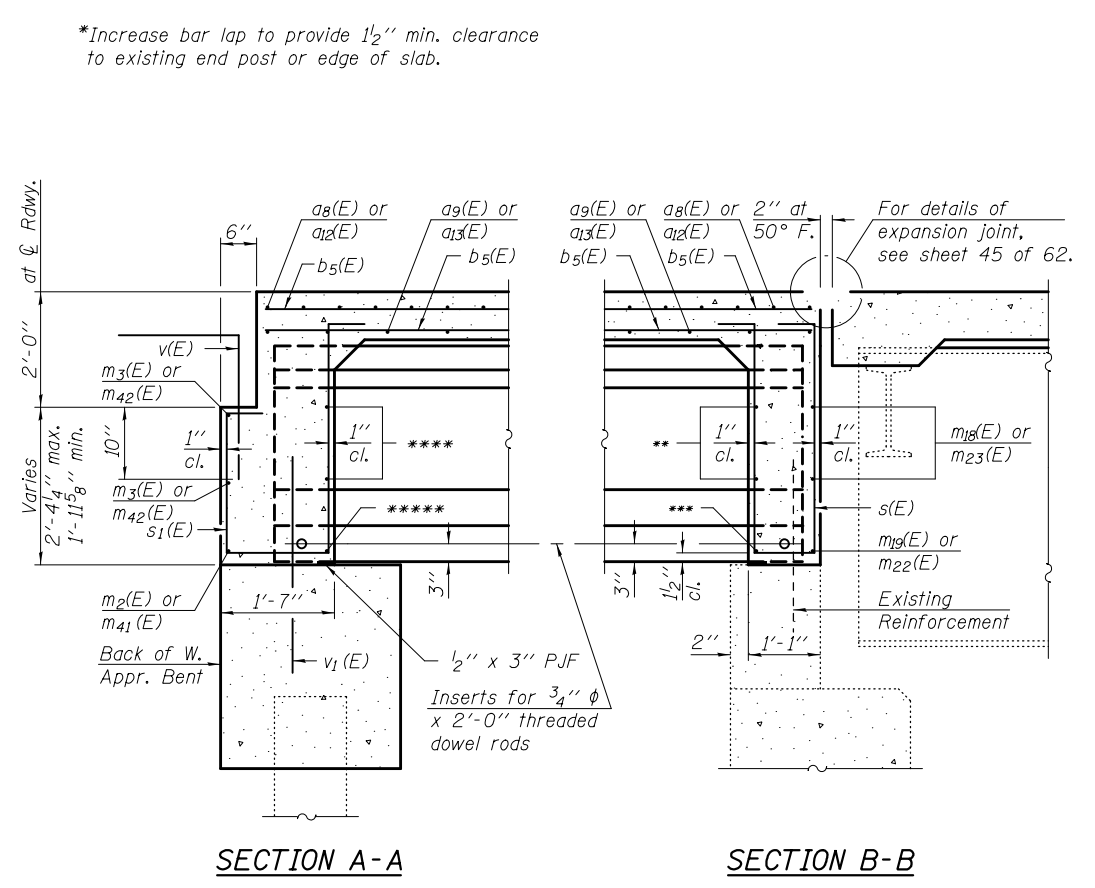


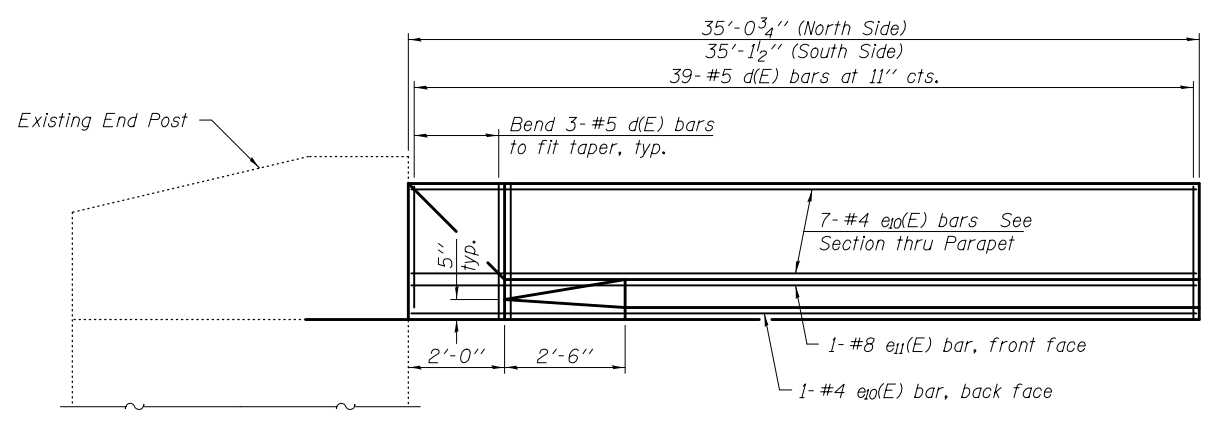
PLAN



SECTION A-A

SECTION B-B

- ** m12(E) or m20(E)
- *** m13(E), m21(E), or m24(E)
- **** m12(E), m45(E), or m49(E)
- ***** m13(E), m46(E), or m50(E)



INSIDE ELEVATION OF PARAPET

Note: Bend e10(E) & e11(E) bars in field to fit taper.

MIN. BAR LAP
#5 bar = 3'-3"

Notes:
For Cross Section and Parapet Details, see sheet 29 of 62.
For diaphragm details and Bill of Materials, see sheet 30 of 62.
For Removal Details, see sheet 18 of 62.
Existing reinforcement shall be cleaned and incorporated into the new construction. Cost included with "Removal of Existing Superstructures".
Any reinforcement bars that are damaged during concrete removal operations shall be repaired or replaced using an approved bar splicer or anchorage system. Cost included with "Removal of Existing Superstructures".

FILE NAME =	USER NAME = #USER*	DESIGNED K.A. KLUES	REVISED - 12/17/12 DHC/JKS
#FILE*		CHECKED E.M. LAGEMANN	Del. Staging (IDOT)
PLOT SCALE =		DRAWN K.A. KLUES	REVISED -
PLOT DATE = #DATE*		CHECKED E.M. LAGEMANN	REVISED -

**STATE OF ILLINOIS
DEPARTMENT OF TRANSPORTATION**



**SUPERSTRUCTURE DETAILS - SPAN 1 (W.B.)
STRUCTURE NOS. 072-0119 (E.B.) & 072-0120 (W.B.)**

F.A.I. RTE.	SECTION	COUNTY	TOTAL SHEETS	SHEET NO.
474	(72-3HB-1),I	PEORIA	88	44
CONTRACT NO. 68883				

SHEET NO. 28 OF 62 SHEETS

ILLINOIS FED. AID PROJECT