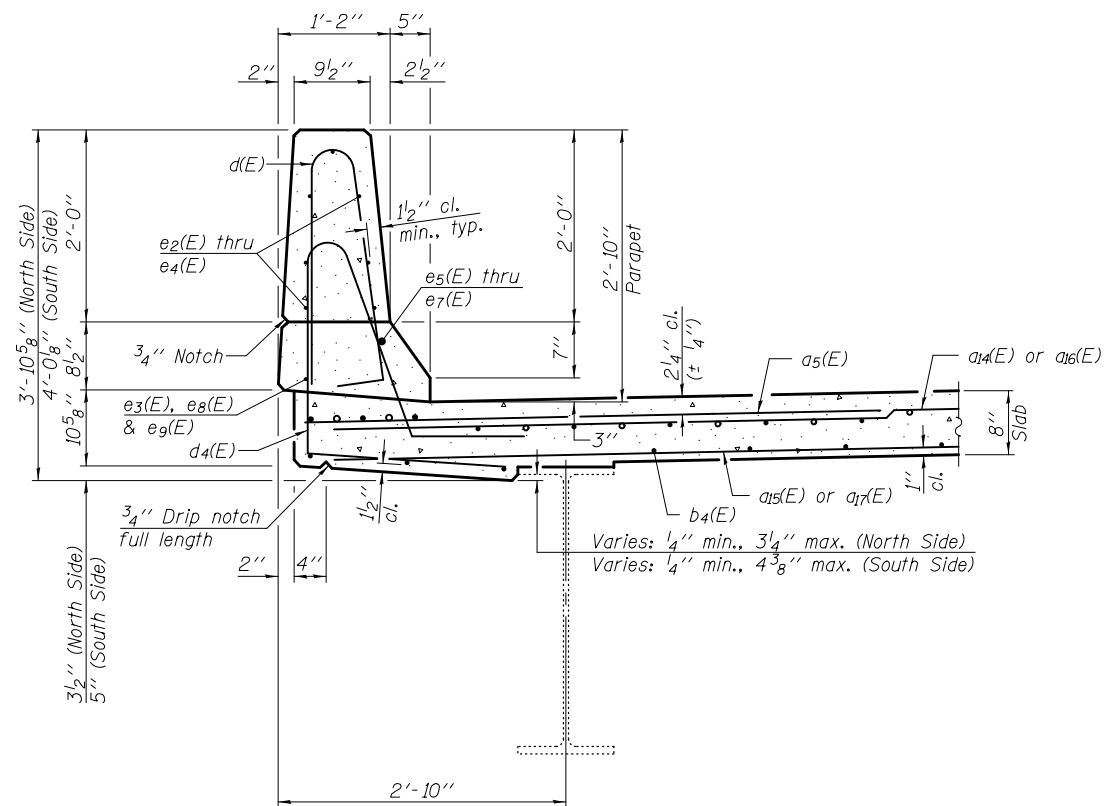
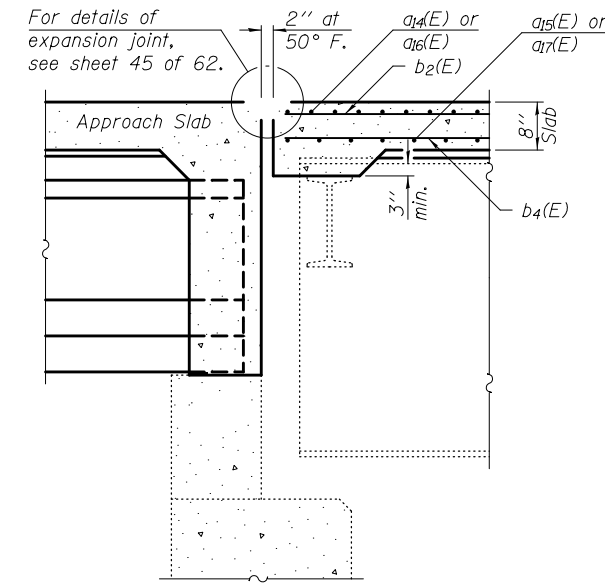


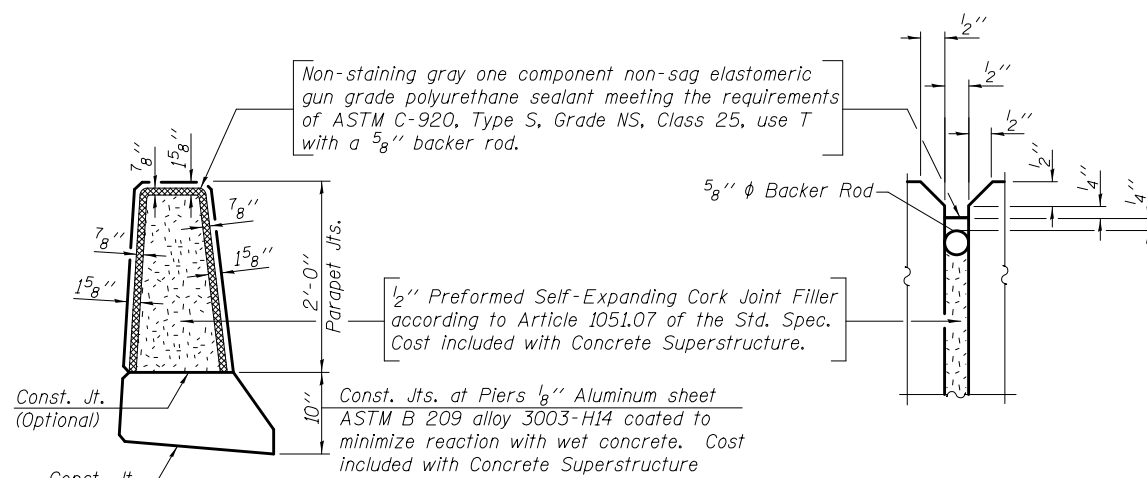
Notes:
 For Plan, see sheet 31 of 62.
 For Cross Section and Parapet, see sheet 32 of 62.
 For bar d(E) diagram, see sheet 21 of 62.
 For Removal Details, see sheet 18 of 62.



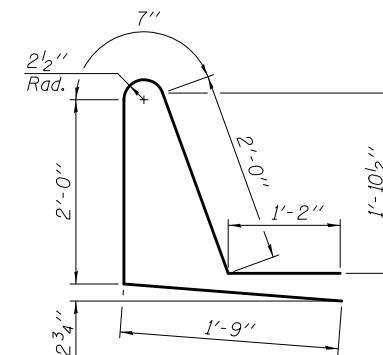
SECTION THRU PARAPET



SECTION A-A



PARAPET JOINT DETAILS



BAR d4(E)

**SUPERSTRUCTURE
 BILL OF MATERIAL**

Bar	No.	Size	Length	Shape
a5(E)	312	#6	6'-6"	—
a4(E)	312	#5	26'-0"	—
a5(E)	234	#5	37'-3"	—
a6(E)	312	#5	32'-10"	—
a7(E)	234	#5	21'-7"	—
b2(E)	464	#5	27'-1"	—
b3(E)	108	#6	25'-10"	—
b4(E)	480	#5	22'-4"	—
d(E)	424	#5	5'-7"	⌒
d4(E)	424	#5	7'-6"	⌒
e2(E)	56	#4	19'-8"	—
e3(E)	32	#4	18'-9"	—
e4(E)	56	#4	18'-10"	—
e5(E)	6	#8	29'-11"	—
e6(E)	4	#8	18'-9"	—
e7(E)	6	#8	28'-10"	—
e8(E)	8	#4	21'-4"	—
e9(E)	8	#4	20'-7"	—
Reinforcement Bars, Epoxy Coated			Pound	74,020
Concrete Superstructure			Cu. Yds.	330.6

FILE NAME =	USER NAME = #USER*	DESIGNED K.A. KLUES	REVISED - 12/17/12 DHC/JKS
FILE		CHECKED E.M. LAGEMANN	Del. Staging (IDOT)
	PLOT SCALE =	DRAWN K.A. KLUES	REVISED -
	PLOT DATE = #DATE*	CHECKED E.M. LAGEMANN	REVISED -

STATE OF ILLINOIS
 DEPARTMENT OF TRANSPORTATION

HORNER &
 SHIRIN, INC
 ENGINEERS

SUPERSTRUCTURE DETAILS – SPANS 2 & 3 (W.B.)
 STRUCTURE NOS. 072-0119 (E.B.) & 072-0120 (W.B.)

SHEET NO. 33 OF 62 SHEETS

F.A.I. RTE.	SECTION	COUNTY	TOTAL SHEETS	SHEET NO.
474	(72-3HB-1), I	PEORIA	88	49
CONTRACT NO. 68883				
ILLINOIS FED. AID PROJECT				