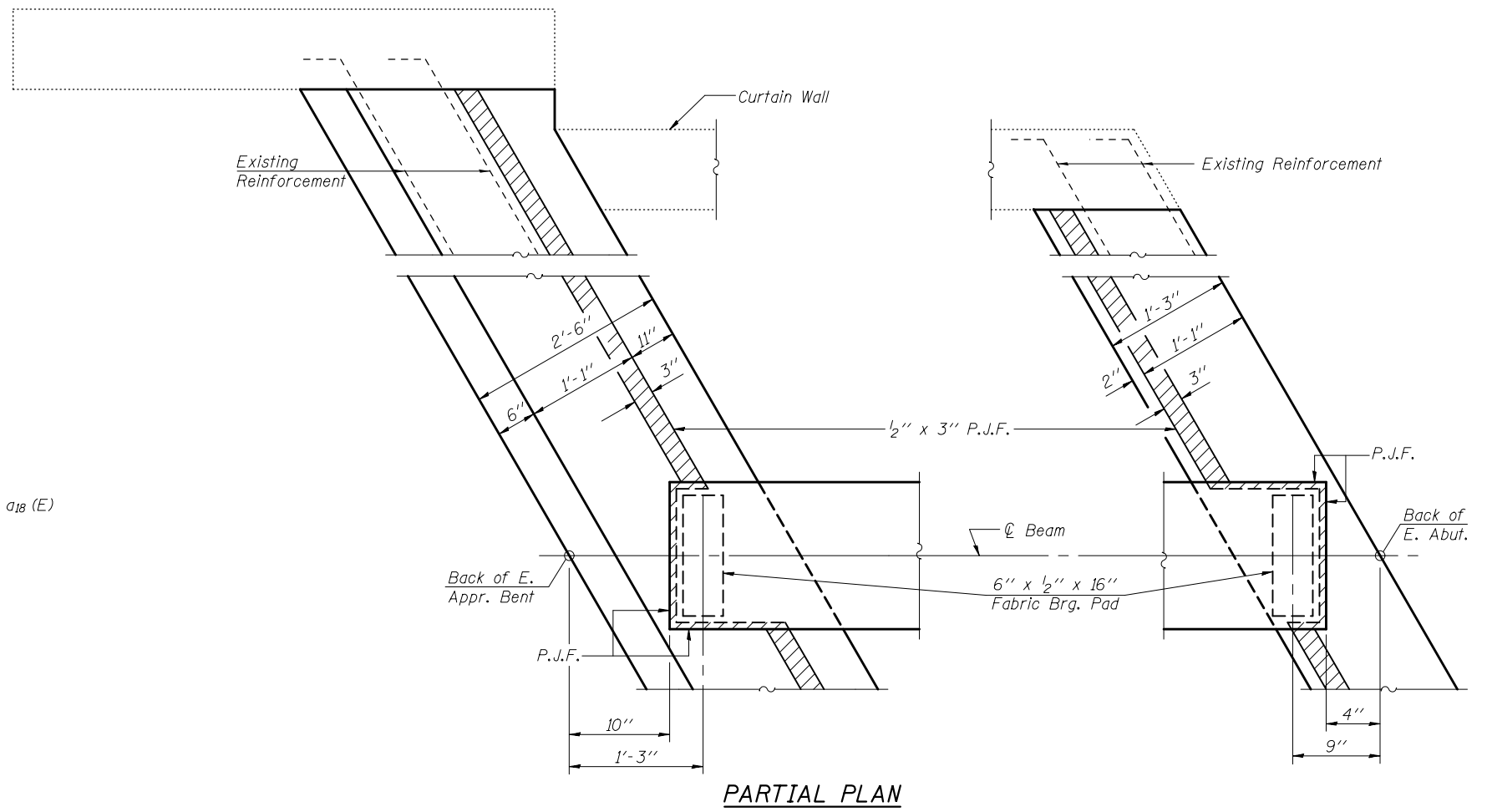
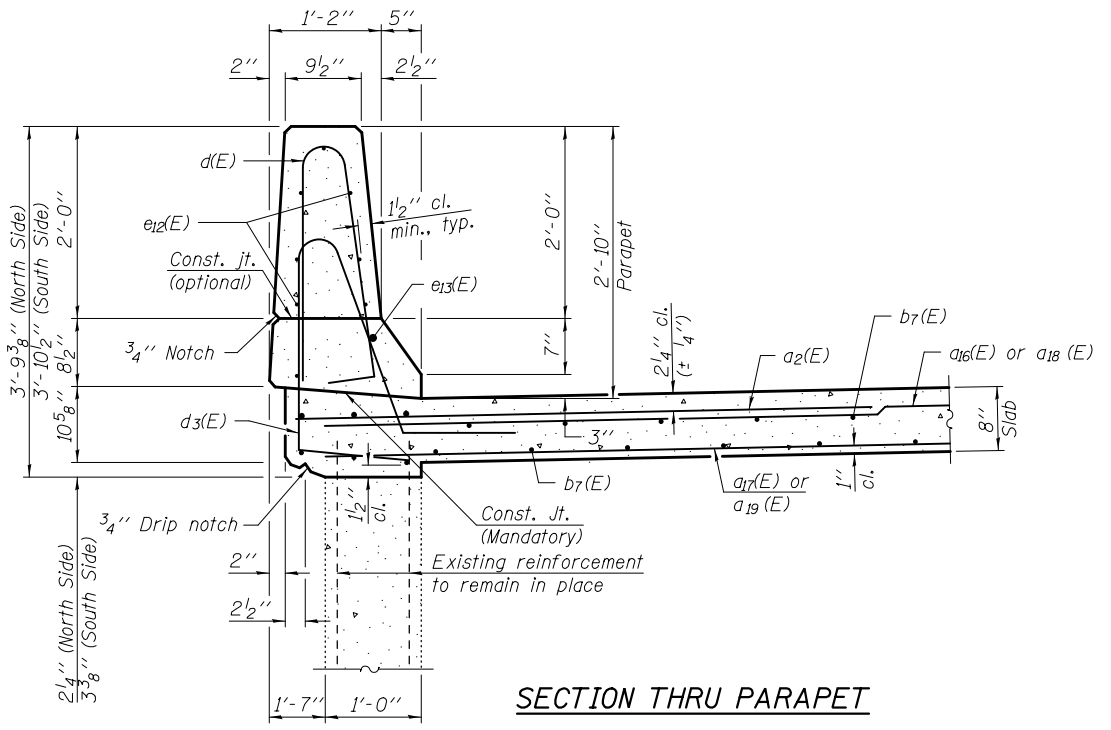


CROSS SECTION
(Looking East)

Notes:
 For Plan, see sheet 34 of 62.
 For bar bending diagrams, see sheets 21 & 36 of 62.
 For diaphragm details and Bill of Material, see sheet 36 of 62.
 For Removal Details, see sheet 18 of 62.
 Existing reinforcement shall be cleaned and incorporated into the new construction. Cost included with "Removal of Existing Superstructures".
 Any reinforcement bars that are damaged during concrete removal operations shall be repaired or replaced using an approved bar splicer or anchorage system. Cost included with "Removal of Existing Superstructures".



PARTIAL PLAN



SECTION THRU PARAPET

FILE NAME =	USER NAME = #USER#	DESIGNED K.A. KLUES	REVISED - 12/17/12 DHC/JKS
*FILE#		CHECKED E.M. LAGEMANN	Del. Staging (IDOT)
	PLOT SCALE =	DRAWN K.A. KLUES	REVISED -
	PLOT DATE = #DATE#	CHECKED E.M. LAGEMANN	REVISED -

STATE OF ILLINOIS
DEPARTMENT OF TRANSPORTATION

HORNER & SHIRIN, INC.
ENGINEERS

SUPERSTRUCTURE DETAILS - SPAN 4 (W.B.)
STRUCTURE NOS. 072-0119 (E.B.) & 072-0120 (W.B.)

F.A.I. RTE.	SECTION	COUNTY	TOTAL SHEETS	SHEET NO.
474	(72-3HB-1),I	PEORIA	88	51
CONTRACT NO. 68883				

SHEET NO. 35 OF 62 SHEETS

ILLINOIS FED. AID PROJECT