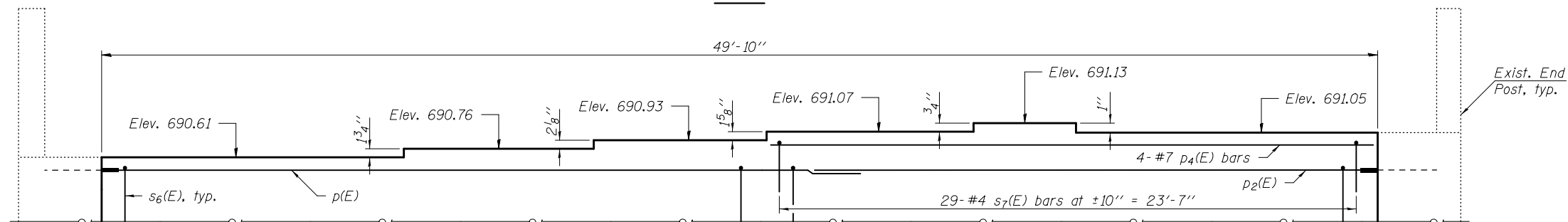
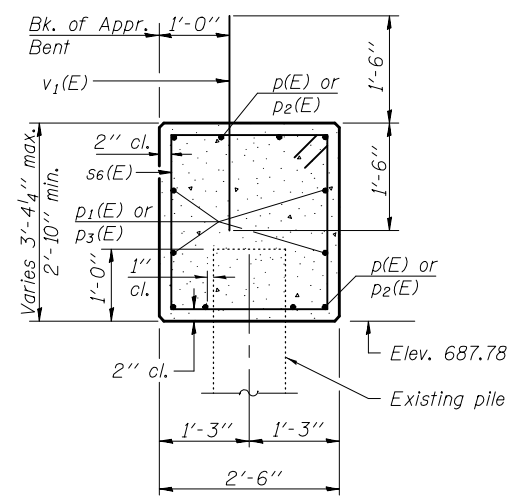


**PLAN**

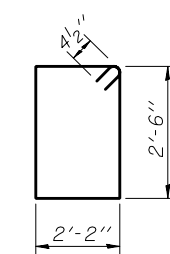


**APPROACH BENT STEP DETAIL**  
(Looking West)

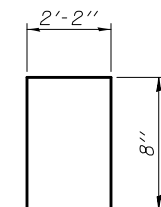
**MIN. BAR LAPS**  
#5 bar = 3'-3"  
#7 bar = 5'-2"



**SECTION A-A**



**BAR s6(E)**



**BAR s7(E)**

**Notes:**  
Four steps monolithically with cap.  
Existing reinforcement shall be cleaned and incorporated into the new construction. Cost included with Concrete Removal.  
Any reinforcement bars that are damaged during concrete removal operations shall be repaired using an approved bar splicer or anchorage system. Cost included with Concrete Removal.  
Existing piles to remain in place. Regions of piles to be embedded in new concrete shall be blast cleaned and incorporated into the new construction. Any damage to existing piles shall be repaired as directed by the Engineer. Cost included with Concrete Removal.  
The Contractor shall cut the existing reinforcement and bars p(E) thru p3(E) to meet the manufacturer's specifications for the mechanical bar splicers.

**BILL OF MATERIAL**

Bar	No.	Size	Length	Shape
p(E)	8	#7	28'-5"	—
p1(E)	4	#5	27'-9"	—
p2(E)	8	#7	26'-4"	—
p3(E)	4	#5	25'-0"	—
p4(E)	4	#7	23'-7"	—
s6(E)	54	#4	10'-1"	□
s7(E)	29	#4	3'-6"	□
v1(E)	42	#5	3'-0"	—
Structure Excavation			Cu. Yd.	36
Concrete Structures			Cu. Yd.	14.4
Reinforcement Bars, Epoxy Coated			Pound	1,870