

| F.A.P. RTE. | SECTION | COUNTY | TOTAL SHEETS | SHEET NO. |
|-------------|---------|--------|--------------|-----------|
| 639 | (123) | Mercer | 14 | 1 |

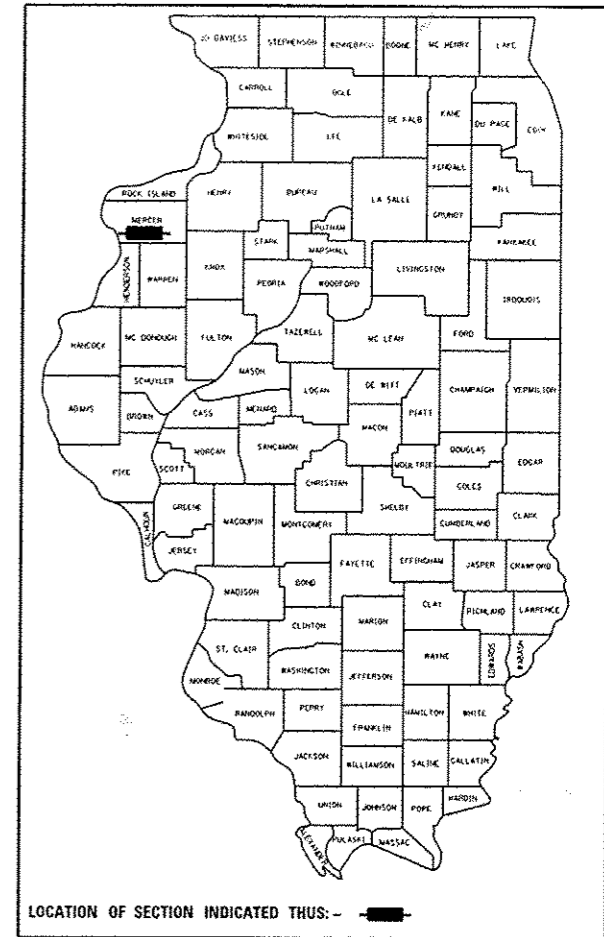
03-08-13 LETTING ITEM 091

STATE OF ILLINOIS
DEPARTMENT OF TRANSPORTATION
DIVISION OF HIGHWAYS

**PROPOSED
HIGHWAY PLANS**

FAP 639(IL 17)
SECTION (123)
MERCER COUNTY
C-94-043-11

D-94-023-11



DESIGNER: KYLE WHEELWRIGHT
(309) 671-3451

INDEX OF SHEETS:

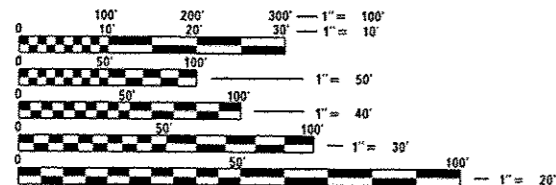
1. COVER SHEET
2. COMMITMENTS & GENERAL NOTES, JOB SPECIFIC NOTES, STATUS OF UTILITIES
3. SUMMARY OF QUANTITIES
4. CROSS SECTION
5. SCHEDULE OF QUANTITIES
6. PLAN & PROFILE
7. GENERAL LAYOUT
8. TRAFFIC CONTROL
9. EXISTING PLAN
- 10-14. PROPOSED PLAN DETAILS

STANDARDS:

- 701001-02
- 701006-04
- 701011-03
- 701201-04
- 701901-02
- 780001-03

ADT = 1850

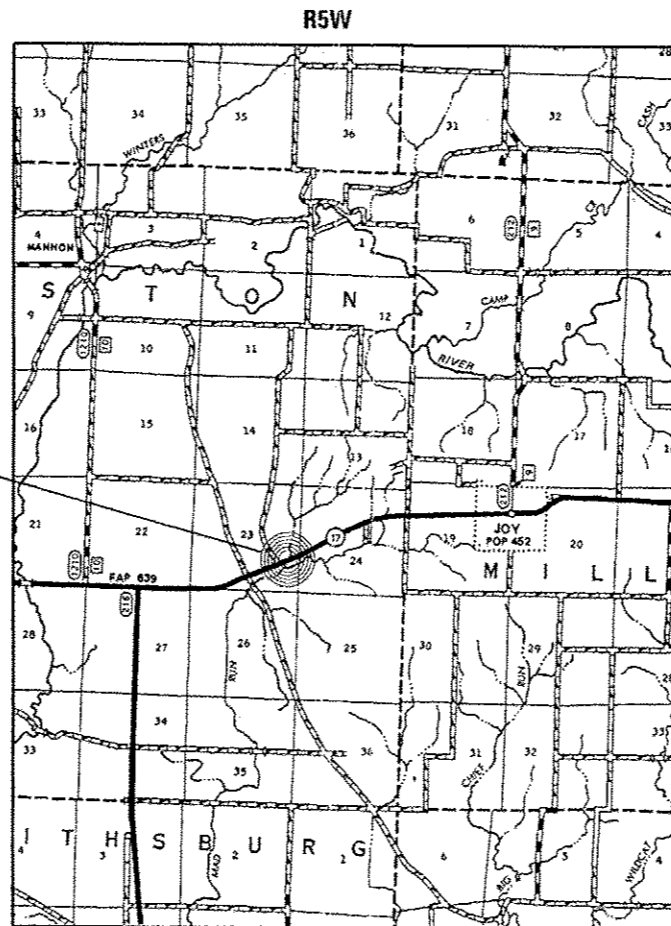
MU = 3.78% 2008



FULL SIZE PLANS HAVE BEEN PREPARED USING STANDARD ENGINEERING SCALES. REDUCED SIZED PLANS WILL NOT CONFORM TO STANDARD SCALES. IN MAKING MEASUREMENTS ON REDUCED PLANS, THE ABOVE SCALES MAY BE USED.

J.U.L.I.E.
JOINT UTILITY LOCATION INFORMATION FOR EXCAVATION
1-800-892-0123

10'x10' Concrete Box
Culvert - Sta. 287 + 90



DESCRIPTION OF WORK:

REPAIR HEADWALLS & BARREL ENDS OF 10' x 10' CONCRETE BOX CULVERT ON IL. 17 OVER MAD RUN CREEK, 0.9 MILES EAST OF BRYANT ROAD AND 2.5 MILES WEST OF JOY AT STA. 287 + 90

PROJECT ENGINEER: TOM LACY
(309) 671-3451

STATE OF ILLINOIS
DEPARTMENT OF TRANSPORTATION
DIVISION OF HIGHWAYS

SUBMITTED Dec 19 2012
W. J. Brown
DEPUTY DIRECTOR OF HIGHWAYS, REGION ENGINEER

Feb 1 2013
John D. Baranzoli, P.E.
acting ENGINEER OF DESIGN AND ENVIRONMENT

Feb 1 2013
Chris Osman, P.E.
DIRECTOR OF HIGHWAYS, CHIEF ENGINEER

PRINTED BY THE AUTHORITY
OF THE STATE OF ILLINOIS

COMMITMENTS

No commitments have been made on this project

GENERAL NOTES

Plan dimensions and details relative to existing structure have been taken from existing plans and are subject to nominal construction variations. It shall be the Contractor's responsibility to verify such dimensions and details in the field and make necessary approved adjustments prior to construction or ordering of materials. Such variations shall not be cause for additional compensation for a change in the scope of the work, however, the Contractor will be paid for the quantity actually furnished at the unit price bid for the work.

JOB SPECIFIC NOTES

The original plans for this 10'x10' concrete box culvert are L-Type vertical cantiliver with 90° squared headwall. (meaning that the footing is only on the inside of the headwall). The contractor shall verify the footing locations and adjust pour depths accordingly. This work will be incidental to the "Structural Repair of Concrete" pay item and quantity will be adjusted accordingly. The concrete repaired area shall have Protective Coat applied. See Special Provisions.

Contractor shall fill and compact North headwall embankment washouts matching existing grade to satisfaction of Engineer. Cost included in Structural Repair of Concrete. See sheet 4 of 14.

Sheet pile shown on the plans shall be PZ-27 with minimum effective section modulus of 30.2 Cu.In/Ft.

UTILITIES -LOCATIONS/INFORMATION

The locations of existing water mains, gas mains, sewers, electric power lines, telephone lines, and other utilities as shown on the plans are based on careful field investigation and the best information available, but are not guaranteed. Unless elevations are shown- all utility locations shown on the cross sections are based on the approximate depth supplied by the utility company. It shall be the Contractor's responsibility to ascertain their exact locations from the utility company and by field inspection.

| ROUTE | OFFSET CL | LOCATION | TYPE OF UTILITY | TYPE OF CONFLICT | DISPOSITION |
|-------|-----------|----------|--------------------|------------------|-------------|
| IL 17 | 29' RT | N. SIDE | WATER | EXCAVATION | CAUTION |
| IL 17 | 24' LT | S. SIDE | AERIAL POWER LINES | *EQUIP. HEIGHT | CAUTION |

*NOTE AERIAL POWER LINES ON THE SOUTH SIDE OF ROAD WILL BE IN CONFLICT WITH HIGH EQUIPMENT OR VEHICLES DURING CONSTRUCTION OPERATIONS.

| | | | | | | | | | | |
|--|------------------------------|---------------|-----------|---|--|-----------------------------|-----------------------------|--------------------------|---------------------------|-----------|
| FILE NAME * | USER NAME * jorwaco | DESIGNED - KW | REVISED - | STATE OF ILLINOIS DEPARTMENT OF TRANSPORTATION | COMMITMENTS & GENERAL NOTES CULVERT NO. 066S17m05.150 | F.A.P. RTE. | SECTION | COUNTY | TOTAL SHEETS | SHEET NO. |
| PROJECT DRAFT \ST08PLUS\SDUR014\Winter P | PROJECT \KYLE\68A29.dgn | DRAWN - KW | REVISED - | | | 639 | 11231 | MERCER | 14 | 2 |
| | PLOT SCALE * 1/8" = 1' / in. | CHECKED - | REVISED - | | | CONTRACT MAINTENANCE REPAIR | | CONTRACT NO. 68A29 | | |
| | PLOT DATE * 7/17/2012 | DATE - | REVISED - | | | SCALE: _____ | SHEET NO. ___ OF ___ SHEETS | STA. _____ TO STA. _____ | ILLINOIS FED. AID PROJECT | |



Multiple Embankment Washouts of center & ends of Headwall
 (±3'x±4'x±3')
 (±2x±4'x±1)
 (±2x±3x±1)

Formed Concrete Repair of Headwall and Culvert Barrel

Formed Concrete Repair of Headwall and Culvert Barrel

℄ Rdwy.

FLOW →

CROSS SECTION

(Looking East)

EXISTING WATER MAIN
 16", 6'-16" DEPTH

FOR INFORMATION ONLY



STRUCTURAL REPAIR OF CONCRETE



Embankment Washouts

| | | | | | | | | | | |
|--|--|---------------------------|-----------------------------|---|--|--------------------------|-------------------|------------------|--------------------|----------------|
| FILE NAME * S:\DEM\DRIFT\510\PLNS\504014\Wm01ar P | USER NAME * jonnace projects\KYLE\68A29.dgn | DESIGNED - KW | REVISED - | STATE OF ILLINOIS DEPARTMENT OF TRANSPORTATION | CROSS SECTION CULVERT NO. 066S17m05.150 | F.A. No. 639 | SECTION (1231) | COUNTY MERCER | TOTAL SHEETS 14 | SHEET NO. 4 |
| PLDY SCALE * NOT TO SCALE | CHECKED - | REVISED - | CONTRACT MAINTENANCE REPAIR | | | CONTRACT NO.68A29 | | | | |
| PLDT DATE * 7/17/2012 | DATE - | REVISED - | (ILLINOIS) FED. AID PROJECT | | | | | | | |
| SCALE: _____ | | SHEET NO. .. OF .. SHEETS | | | | STA. _____ TO STA. _____ | | | | |

SCHEDULE OF QUANTITIES

CONCRETE STRUCTURES

| LOCATION | CUYD |
|------------------------|------|
| NE Headwall of Culvert | 4.5 |
| TOTAL | 4.5 |

DEWATERING STRUCTURE NO. 1

| LOCATION | EACH |
|------------------------------|------|
| Waterlevel of Culvert Barrel | 1 |
| TOTAL | 1 |

REM. & RE-ERECT RAIL ELEMENT OF EXIST. GUARD RAIL

| LOCATION | FOOT |
|----------------------------|------|
| Shoulder Access to Culvert | 50 |
| TOTAL | 50 |

PERMANENT STEEL SHEET PILING

| LOCATION | SOFT |
|------------------------|------|
| NE Headwall of Culvert | 564 |
| TOTAL | 564 |

MOBILIZATION

| LOCATION | LSUM |
|----------|------|
| Jobsite | 1 |
| TOTAL | 1 |

STRUCT. REP. OF CONC. (DEPTH = TO OR < 5")

| LOCATION | SOFT |
|---------------------------|------|
| Culvert Headwalls/Barrels | 435 |
| TOTAL | 435 |

T. C. & P. STANDARD 701201

| LOCATION | LSUM |
|----------|------|
| Jobsite | 1 |
| TOTAL | 1 |

STRUCT. REP. OF CONC. (DEPTH > 5")

| LOCATION | SOFT |
|---------------------------|------|
| Culvert Headwalls/Barrels | 25 |
| TOTAL | 25 |

| | | | | | | | | | | |
|---|--|----------------|-----------|---|---|-----------------------------|------------------|--------------------|--------------------|---------------------------|
| FILE NAME * S:\GEN\DRIFT\ST05PLUS\SOUNDIA\Winter P | USER NAME * joneaso ajjooa\KYLE\68A29.dgn | DESIGNED - CEK | REVISOR - | STATE OF ILLINOIS DEPARTMENT OF TRANSPORTATION | SCHEDULE OF QUANTITIES CULVERT NO. 066S17m05.150 | F.A.P. RTE. 639 | SECTION (123) | COUNTY MERCER | TOTAL SHEETS 14 | SHEET NO. 5 |
| PLUT SCALE * 100.0000 / 1" | PLDT DATE * 7/17/2012 | CHECKED - | REVISOR - | SCALE: _____ | SHEET NO. _____ OF _____ SHEETS | CONTRACT MAINTENANCE REPAIR | | CONTRACT NO. 68A29 | | ILLINOIS FED. AID PROJECT |
| | DATE - 06/29/2012 | REVISOR - | | | STA. _____ TO STA. _____ | | | | | |

SAMUEL OLSON

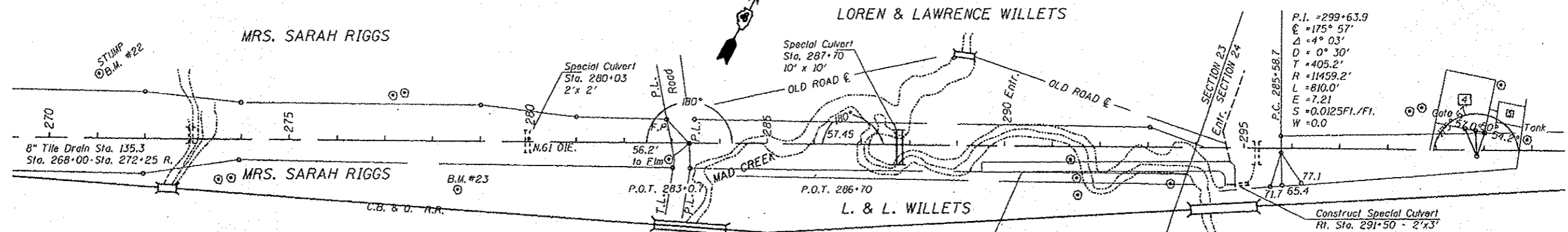
The embankment of Rt. Sta. 291+20 to Rt. Sta. 294+00 shall be puddled as provided for in the Special Provisions and shown on a detail sheet in these plans

LOREN & LAWRENCE WILLETS

MRS. SARAH RIGGS

MRS. SARAH RIGGS

L. & L. WILLETS



P.I. = 299+63.9
 E = 175° 57'
 Δ = 4° 03'
 D = 0° 30'
 T = 405.2'
 R = 11459.2'
 L = 810.0'
 E = 7.21
 S = 0.0125 Ft./Ft.
 W = 0.0

| Computed Quantities for Entrance Approaches | | |
|---|----------|--------------------------|
| Entrance Location | Cut/Fill | Excluded in Balance Dirt |
| Rt. Sta. 283+12 | 359 | Sta. 209+07 to 286+70 |
| Lt. Sta. 298+50 | 0 | Sta. 200+58 to 303+15 |

Standard Grading Section
 32' Roadway
 Sta. 272+65 to 266+50

Concrete Gutter - Type "C"
 Standard No. 1354
 18' Pvm. 30' Road
 Sta. 293+50 - 298+25
 Sta. 272+65 - 279+50

Special Ditch
 Lt. Sta. 284+00 to 286+00
 See "X" Sections

Special Ditch
 Lt. Sta. 290+50 to 291+40
 See "X" Sections

| Outlet for Concrete Gutter - Type "C" | | | | | |
|---------------------------------------|------------------|-------------------------|----------------------------------|--------|--|
| Type | Location | Cu.Yds. Class "X" Conc. | 6" Cor. Iron Pipe | Grates | |
| #1 | Rt. & Lt. 270+50 | 1.4 | Rt. 18" - Lt. 18" | 2 | |
| Std. | Rt. 293+50 | 2.0 | Build-out to Slope Wall in place | | |
| Std. | Lt. 293+50 | 1.9 | | | |

Concrete Gutter - Type "B"
 Standard No. 1339
 18' Pvm. 30' Road
 Sta. 298+75 - 304+40

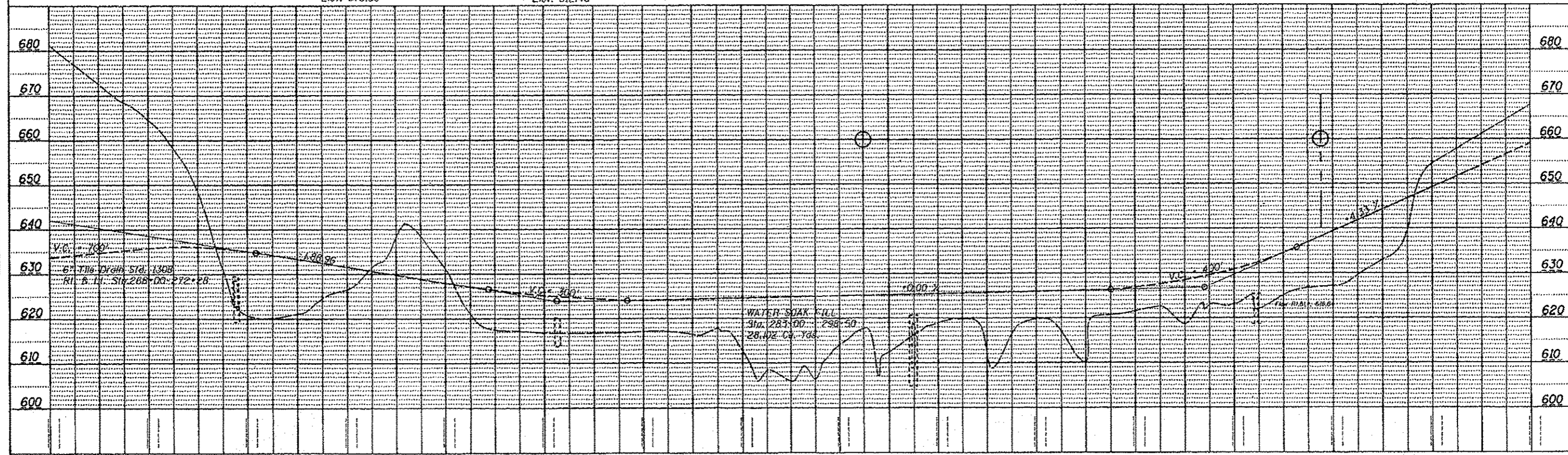
| Outlet & Inlet for Concrete Gutter - Type "B" | | | |
|---|-----------------|-------------------------|-----|
| Item | Location | Cu.Yds. Class "X" Conc. | |
| Gutter Entrance | Lt. Sta. 298+60 | 11.2 | 1.0 |

Standard Grading Section
 30' Roadway
 Sta. 298+50 to 304+60

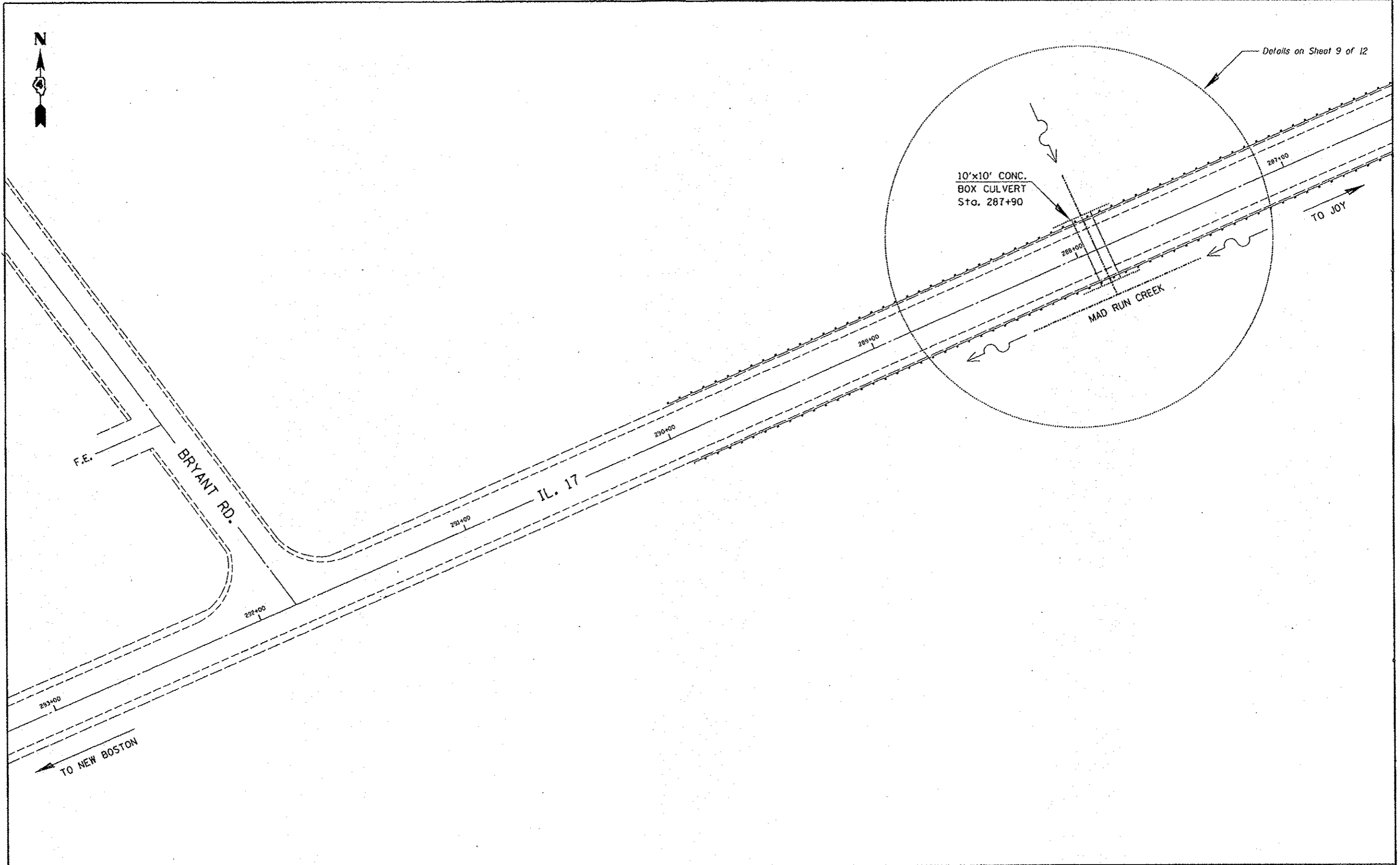
B.M. #22
 New in Stump
 125' Lt. Sta. 271+00
 Elev. 676.50

B.M. #23
 S & W in 30' Oak
 Rt. Sta. 278+50
 Elev. 612.48

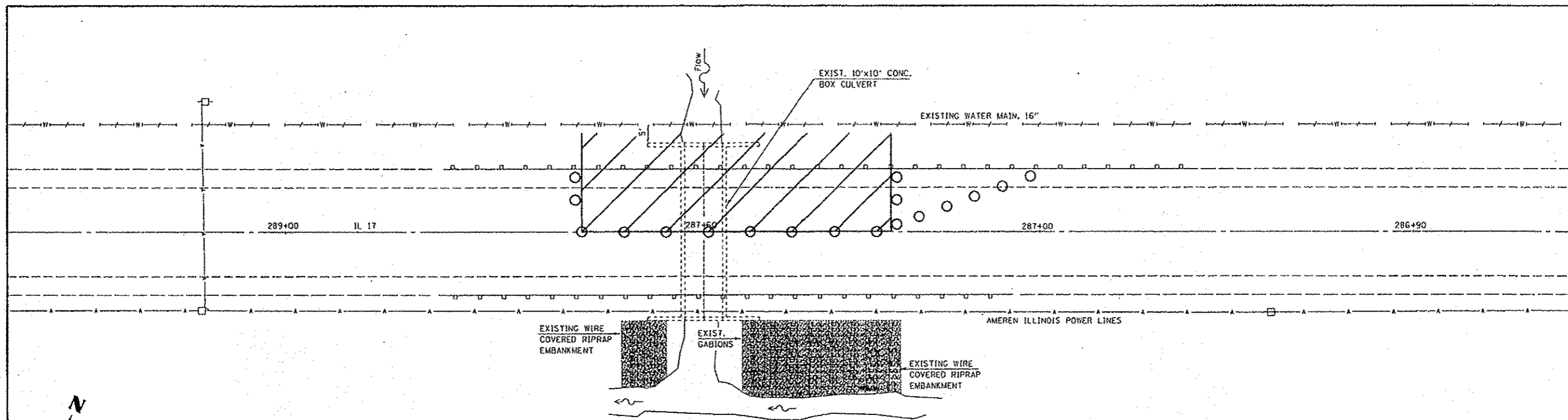
B.M. #24
 R.R.S. horizon T.P.
 Rt. Sta. 288+26
 Elev. 633.35



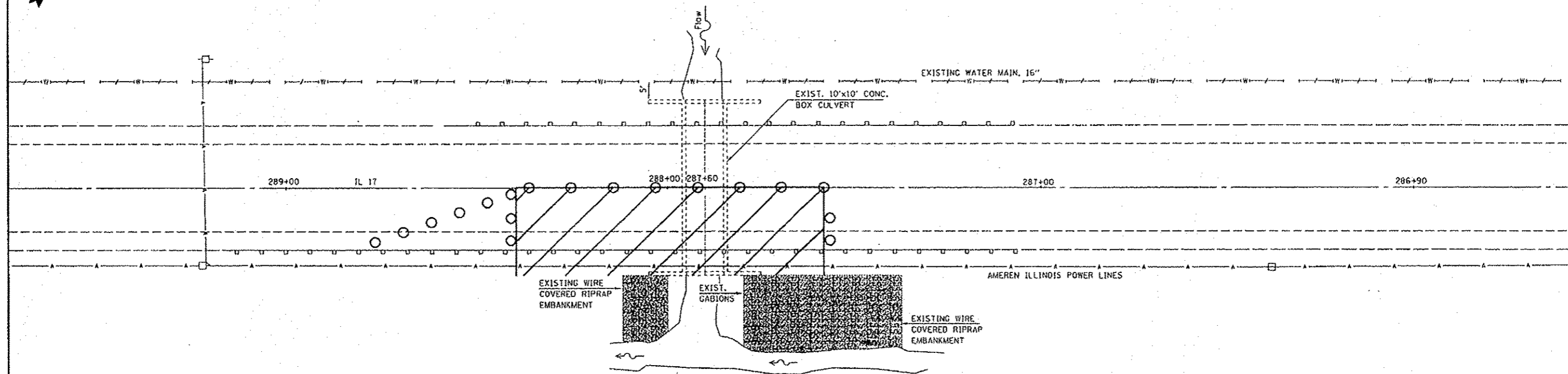
| FILE NAME D:\CEN\DRM\1\ST01\PLN\60A29.dwg | USER NAME jonesco | DESIGNED --- | REVISED --- | <p align="center">STATE OF ILLINOIS DEPARTMENT OF TRANSPORTATION</p> | <p align="center">PLAN AND PROFILE CULVERT NO. 066S17m05.160</p> | <table border="1"> <tr> <th>F.A. RTE.</th> <th>SECTION</th> <th>COUNTY</th> <th>TOTAL SHEETS</th> <th>SHEET NO.</th> </tr> <tr> <td>639</td> <td>12311</td> <td>MERCER</td> <td>14</td> <td>6</td> </tr> </table> | F.A. RTE. | SECTION | COUNTY | TOTAL SHEETS | SHEET NO. | 639 | 12311 | MERCER | 14 | 6 |
|--|---------------------------|-----------------------------|----------------|---|---|---|-----------|---------|--------|--------------|-----------|-----|-------|--------|----|---|
| F.A. RTE. | SECTION | COUNTY | TOTAL SHEETS | | | | SHEET NO. | | | | | | | | | |
| 639 | 12311 | MERCER | 14 | | | | 6 | | | | | | | | | |
| Default | PLOT SCALE = 1/8" = 1'-0" | CHECKED --- | REVISED --- | | | | | | | | | | | | | |
| | PLOT DATE = 7/17/2012 | DATE --- | REVISED --- | | | | | | | | | | | | | |
| SCALE: _____ | | SHEET _____ OF _____ SHEETS | | STA. _____ TO STA. _____ | | CONTRACT MAINTENANCE REPAIR ILLINOIS FED. AID PROJECT | | | | | | | | | | |



| | | | | | | | | | | | | |
|---|--|---------------|-----------|---|---|---------------------------------|--------------------------|-----------------------------|------------------|-----------------------|-------------------|--|
| FILE NAME • S:\GEN\DRFT\6105\PLNS\6004014\Winter P | USER NAME • jonasee ojedols\KYLE\6829.dgn | DESIGNED - KW | REVISED - | STATE OF ILLINOIS DEPARTMENT OF TRANSPORTATION | GENERAL LAYOUT CULVERT NO. 066S17m05.150 | | F.A.P. RTE. 639 | SECTION (123)1 | COUNTY MERCER | TOTAL SHEETS 14 | SHEET NO. 7 | |
| | PLOT SCALE • 1/8" = 1' | DRAWN - KW | REVISED - | | SCALE: _____ | SHEET NO. _____ OF _____ SHEETS | STA. _____ TO STA. _____ | CONTRACT MAINTENANCE REPAIR | | CONTRACT NO. 68A29 | | |
| | PLOT DATE • 7/17/2012 | CHECKED - | REVISED - | | ILLINOIS FED. AID PROJECT | | | | | | | |
| | | DATE - | REVISED - | | | | | | | | | |



PLAN
(Stage I)

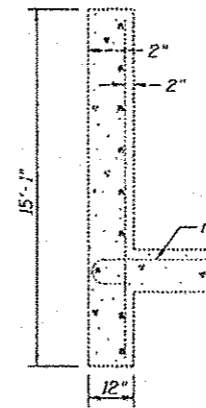
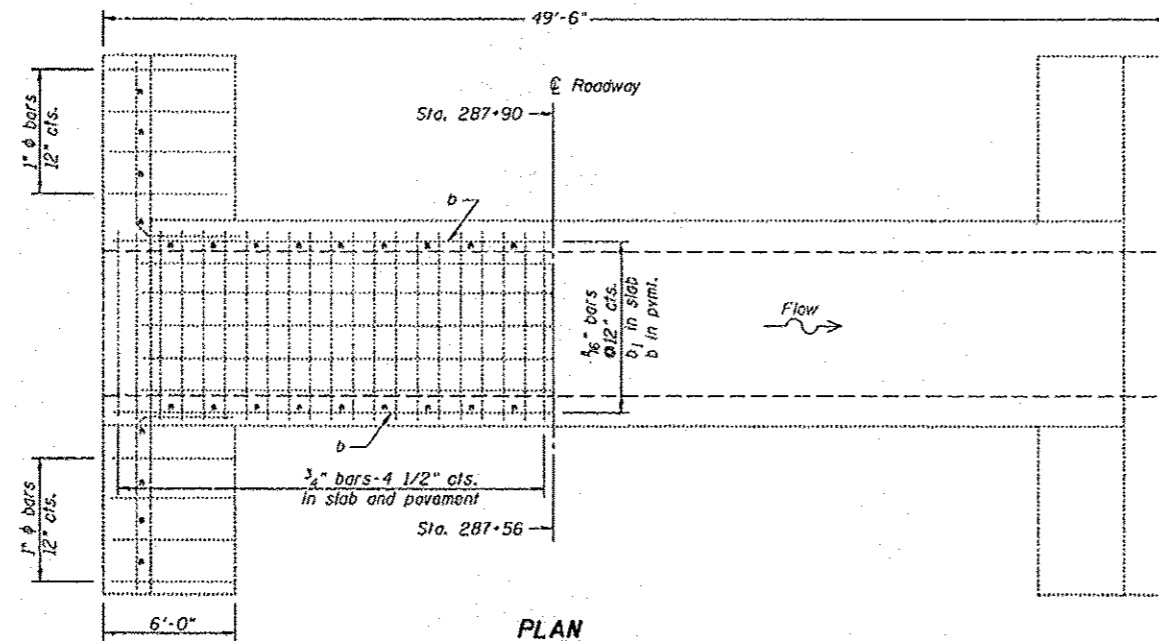
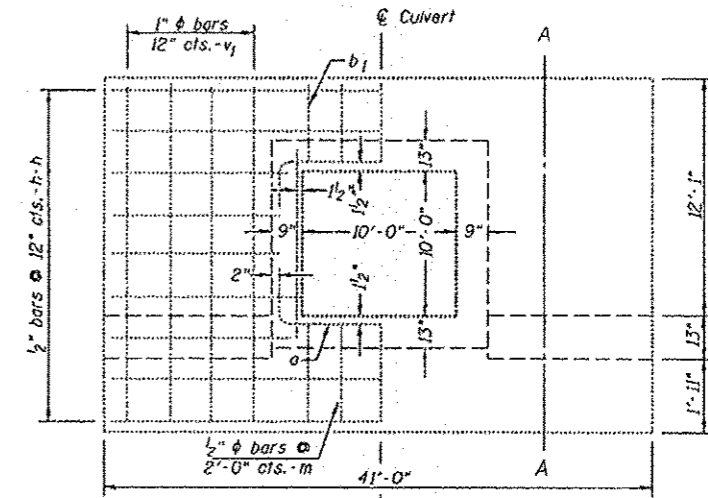
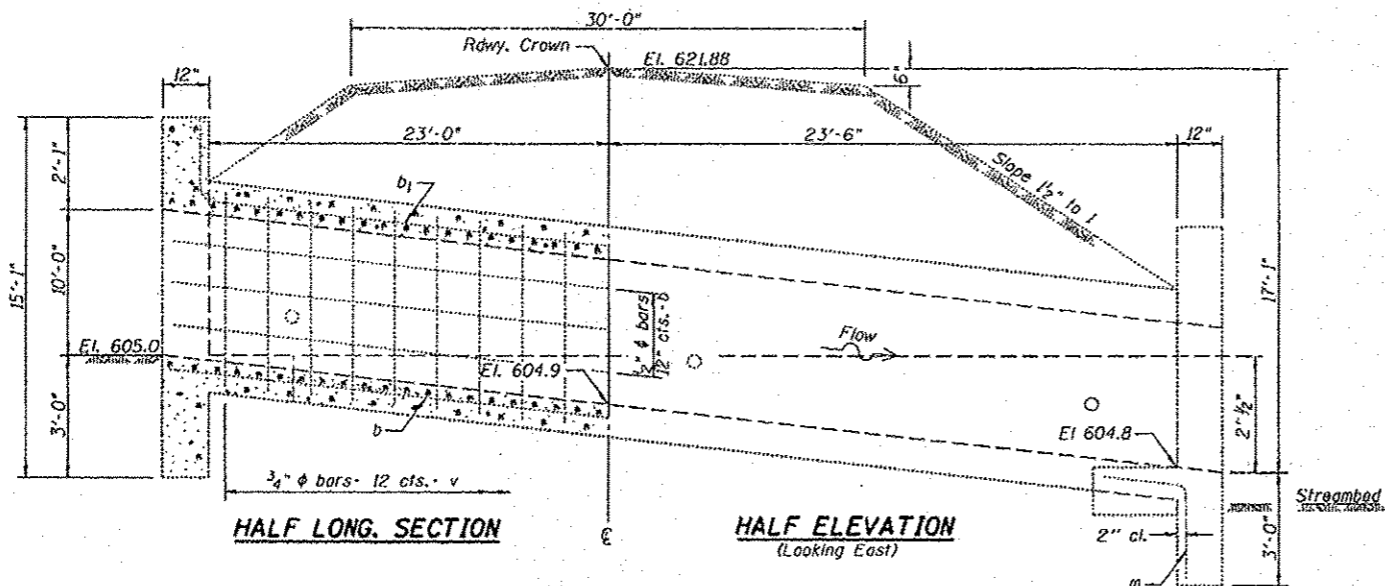


PLAN
(Stage II)

NOTES
Refer to Highway Standards 701201 in conjunction with this sheet for exact placement of traffic management devices and other clarifications as construction staging symbols and dimensioning were duplicated off of this standard.
Traffic staging sequence shall be at the discretion of the Engineer for given field applications.

| | | | | | | | | | | | |
|--|------------------------------|----------------------|-----------|---|---------------------------|---------------------------------|-----------------------------|---------------------------|--------------------|-----------------------|-------------------|
| FILE NAME * S:\ENGR\DRM\1\STDB\PLNS\5004014\Water P | USER NAME * jmarco | DESIGNED - KW | REVISED - | STATE OF ILLINOIS DEPARTMENT OF TRANSPORTATION | TRAFFIC CONTROL | | F.A. RTE. 639 | SECTION (1231) | COUNTY MERCER | TOTAL SHEETS 14 | SHEET NO. 8 |
| | PLOT SCALE * NOT TO SCALE | DRAWN - KW | REVISED - | | CULVERT NO. 066S17m05.150 | | CONTRACT MAINTENANCE REPAIR | | CONTRACT NO. 68A29 | | |
| | PLOT DATE * 7/17/2012 | CHECKED - | REVISED - | | SCALE: _____ | SHEET NO. _____ OF _____ SHEETS | STA. _____ TO STA. _____ | ILLINOIS FED. AID PROJECT | | | |
| | | DATE - 06/28/2012 | REVISED - | | | | | | | | |

REINFORCED CONCRETE BOX CULVERT



END ELEVATION
(Looking South)

SHOWING REINFORCEMENT

SHOWING OUTLINES

BILL OF MATERIAL

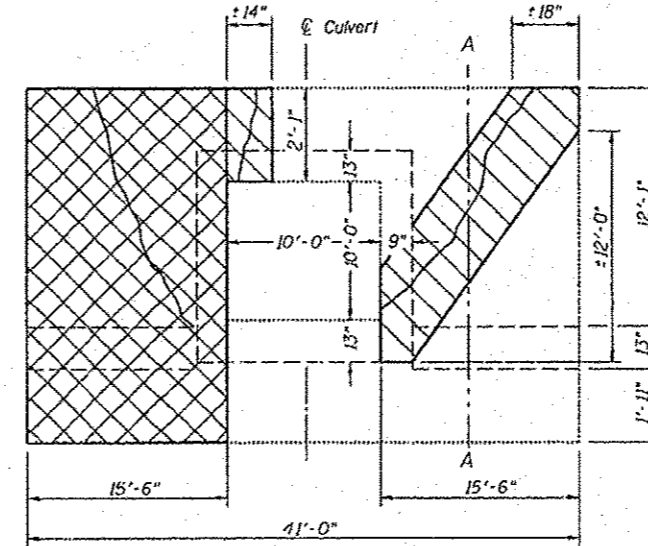
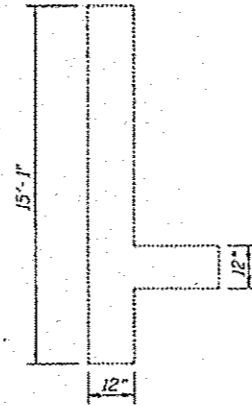
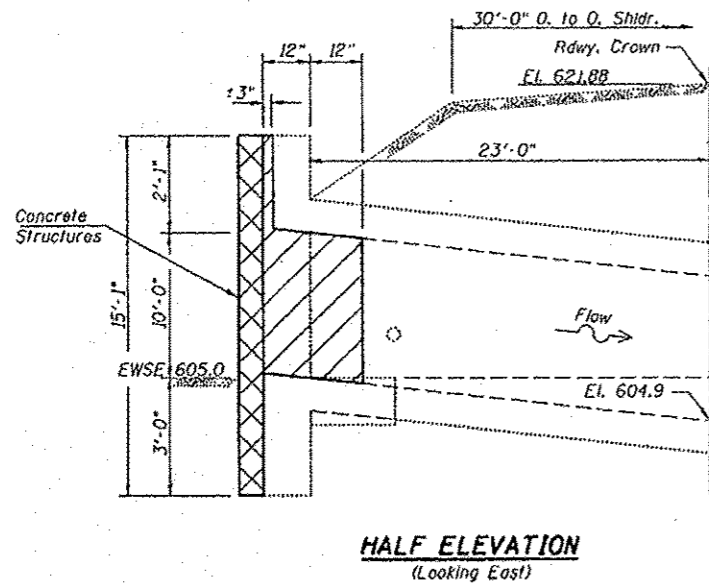
| Bar | No. | Size | Length |
|----------------|-----|--------|--------|
| v | 94 | 3/4" φ | 11'-9" |
| v ₁ | 64 | 1" φ | 14'-9" |
| h | 24 | 1/2" φ | 21'-6" |
| h ₁ | 40 | 1/2" φ | 16'-6" |
| a | 260 | 3/4" φ | 13'-0" |
| b | 58 | 1/2" φ | 25'-6" |
| b ₁ | 22 | 1/2" φ | 26'-6" |
| r | 64 | 1" φ | 6'-6" |
| m | 5 | 1/2" φ | 5'-0" |
| Steel | | Pound | 12,550 |
| Concrete | | Cu.Yd. | 119 |

SECTION A-A

Class A concrete to be throughout.
Proportions 1:2 1/2:4. Use "m" bars
in downstream headwall only.

| | | | | | | | | | |
|--|------------------------|-------------------------------|---------|---|--|-----------------------|------------------|--------------------------------|---------------------------|
| FILE NAME S:\CADD\DRAWING\STANDARD\PLANS\SOURCE\11\Winter | USER NAME jgarcia | DESIGNED CEJ | REVISED | STATE OF ILLINOIS DEPARTMENT OF TRANSPORTATION | EXISTING PLAN CULVERT NO. 066S17m05.150 | F.A.P. RTE. 639 | SECTION 1123H | COUNTY MERCER | TOTAL SHEETS NO. 14 |
| PLDT SCALE 100.3888 1/16" | PLDT DATE 7/17/2012 | CHECKED DATE 06/18/2012 | REVISED | SCALE | SHEET NO. OF SHEETS | STA. | TO STA. | CONTRACT MAINTENANCE REPAIR | TOTAL SHEETS NO. 9 |
| | | | | | | | | CONTRACT NO. 68A29 | ILLINOIS FED. AID PROJECT |

REINFORCED CONCRETE BOX CULVERT



GENERAL NOTES

The locations of existing water mains, gas mains, sewers, electric power lines, telephone lines and other utilities as shown on the plans are based on careful field investigation and the best information available, but they are not guaranteed. Unless elevations are shown --- all utility locations shown on the cross sections are based on the approximate depth supplied by the utility company. It shall be the Contractor's responsibility to ascertain their exact location from the utility companies and by field inspection.

Reinforcement bars shall conform to the requirements of ASTM A 706 Gr 60 (LL Modified). See Special Provisions.

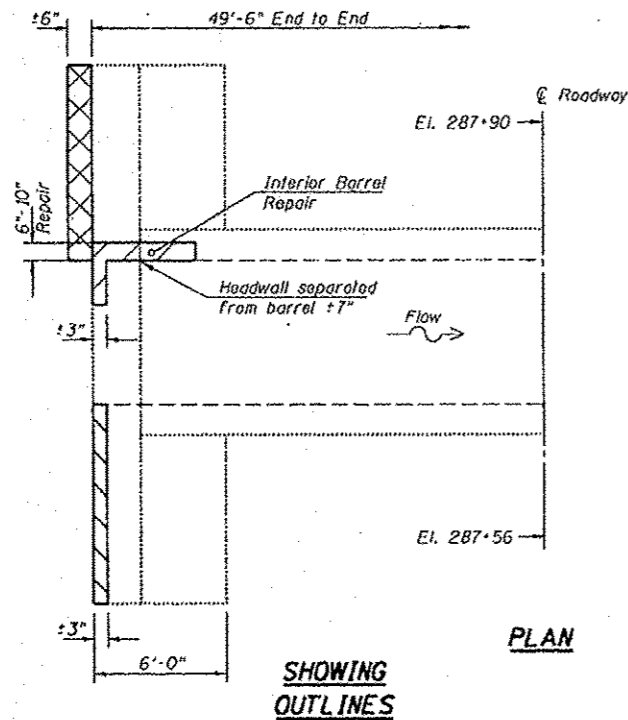
Plan dimensions and details relative to existing plans are subject to routine variations. The Contractor shall field verify existing dimensions and details affecting new construction and make necessary approved adjustments prior to construction or ordering of materials. Such variations shall not be cause for additional compensation for a change in scope of the work, however, the Contractor will be paid for the quantity actually furnished based upon the unit price bid for the work.

The Contractor shall obtain a construction permit from the Illinois Department of Natural Resources (IDNR), Office of Water Resources for any temporary construction activity placed in the water except cofferdams. This shall include the placement of material for run-arounds, causeways, etc. Any permit application by the Contractor shall refer to the IDNR permit number as shown in the contract plans.

Any damage or disturbance of the stream and headwall embankments or slopes leading to and including existing gabion baskets, shall be restored to original conditions. Costs included with Structural Repair of Concrete.

The Contractor shall be responsible for diverting the water from the construction area using an accepted method of dewatering as shown in the Plan and approved by the Engineer. See Dewatering Special Provision.

Class A concrete to be throughout. Proportions 1:2 1/2:4.



LEGEND

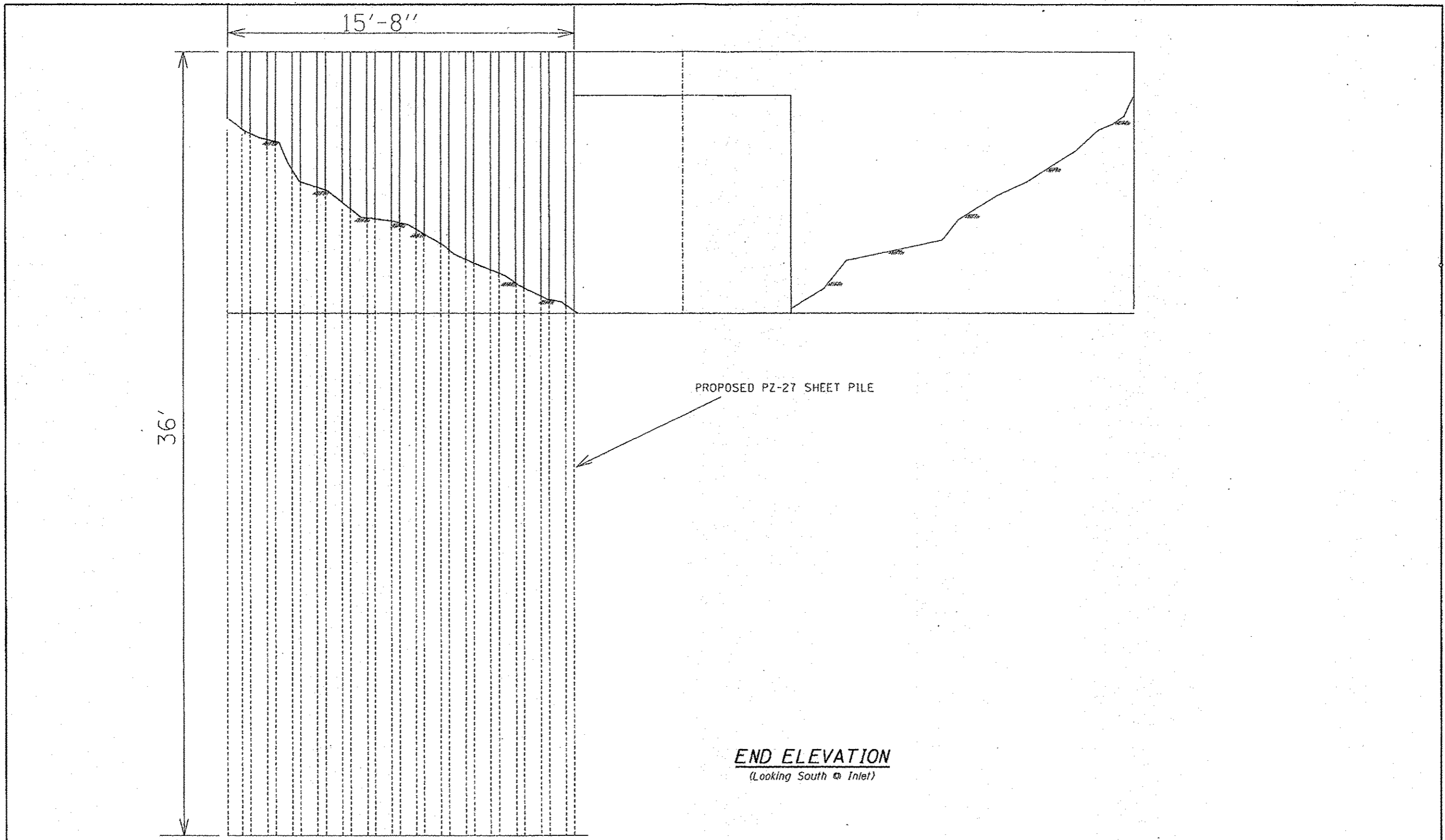
- Proposed Structural Repair of Concrete
- Proposed Sheet Piling and Concrete Headwall

TOTAL BILL OF MATERIAL

| ITEM | UNIT | QUANTITY |
|--|------|----------|
| Concrete Structures | CuYd | 4.5 |
| Protective Coat | SqYd | 77 |
| Permanent Steel Sheet Piling | SqFt | 564 |
| Structural Repair of Concrete (depth equal to or less than 5 inches) | SqFt | 435 |
| Structural Repair of Concrete (depth greater than 5 inches) | SqFt | 25 |
| | | |
| | | |
| | | |
| | | |

* estimated quantity included in cost of Structural Repair of Concrete (See Special Provisions)

| | | | | | | | | | | |
|--|-----------|------------------|---------|---|---|-----------------------------|--------------------|--------|--------------|-----------|
| FILE NAME | USER NAME | DESIGNED | REVISED | STATE OF ILLINOIS DEPARTMENT OF TRANSPORTATION | PROPOSED REPAIRS CULVERT NO. 066S17M05.150 | F.A.P. RTE. | SECTION | COUNTY | TOTAL SHEETS | SHEET NO. |
| D:\GEN\DRAW\SYSTEM\PLANS\504014\Winter P | jonasce | CEJ | | | | 639 | (123) | MERCER | 14 | 10 |
| OBJECT NAME: 60A29.dgn | | | | | | CONTRACT MAINTENANCE REPAIR | CONTRACT NO. 60A29 | | | |
| PLOT SCALE: 1/8" = 1'-0" | | | | | | ILLINOIS FED. AID PROJECT | | | | |
| PLOT DATE: 7/17/2012 | | DATE: 06/26/2012 | | SCALE: _____ | SHEET NO. _____ OF _____ SHEETS | STA. _____ TO STA. _____ | | | | |



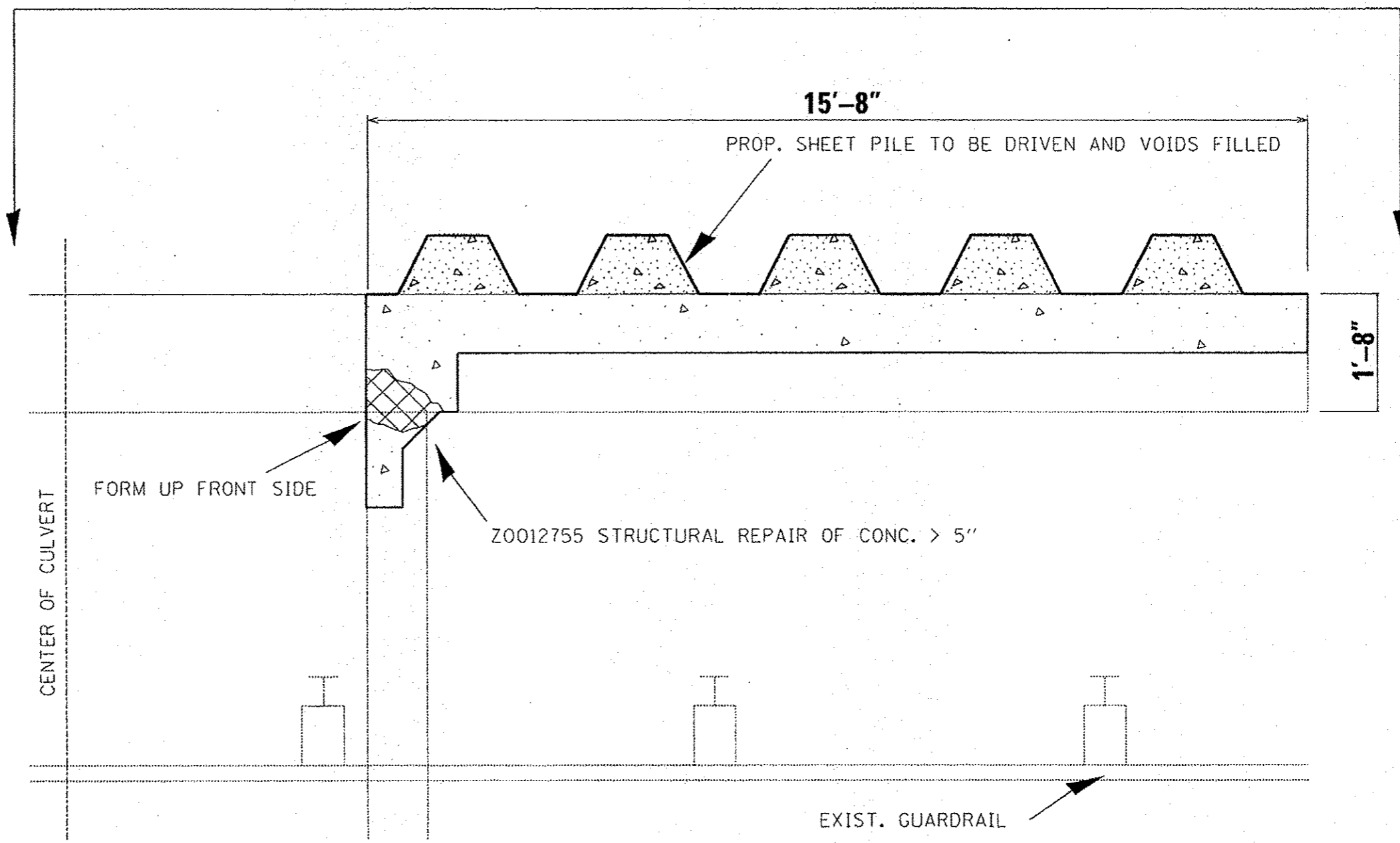
PROPOSED PZ-27 SHEET PILE



END ELEVATION
(Looking South @ Inlet)

| | | | | | | | | | | |
|---|---|-----------------------------|------------------------|---|--|-----------------------------|--------------------|------------------|--------------------|-----------------|
| FILE NAME * S:\GEN\DRAP\1\ST0\PLNS\50\ADH\Wester | USER NAME * johnsoo P:\jsoo\KYLE\68A29.dgn | DESIGNED - KW DRAWN - KW | REVISED - REVISED - | STATE OF ILLINOIS DEPARTMENT OF TRANSPORTATION | N.E. Wingwall CULVERT NO. 066S17m05.150 | F.A. RTE. - 639 | SECTION (1231) | COUNTY MERCER | TOTAL SHEETS 14 | SHEET NO. 11 |
| | PLOT SCALE * NOT TO SCALE | CHECKED - | REVISED - | | | CONTRACT MAINTENANCE REPAIR | CONTRACT NO. 68A29 | | | |
| | PLOT DATE * 7/17/2012 | DATE - | REVISED - | | | ILLINOIS FED. AID PROJECT | | | | |
| | SCALE: _____ SHEET NO. 2 OF 5 SHEETS STA. _____ TO STA. _____ | | | | | | | | | |



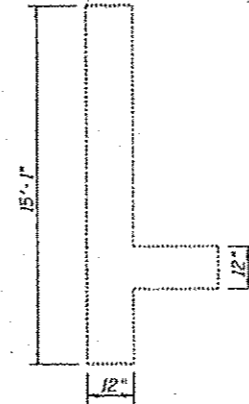
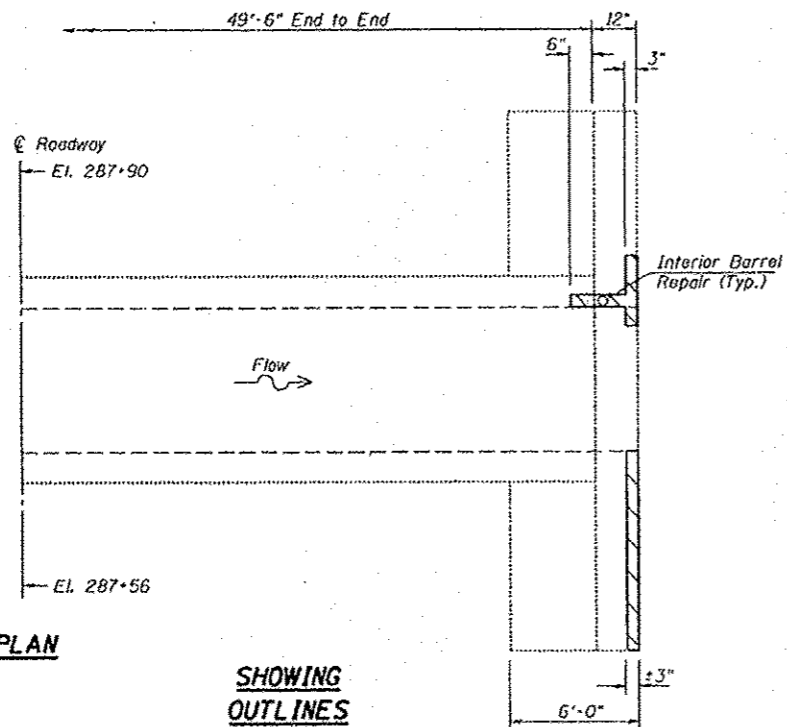
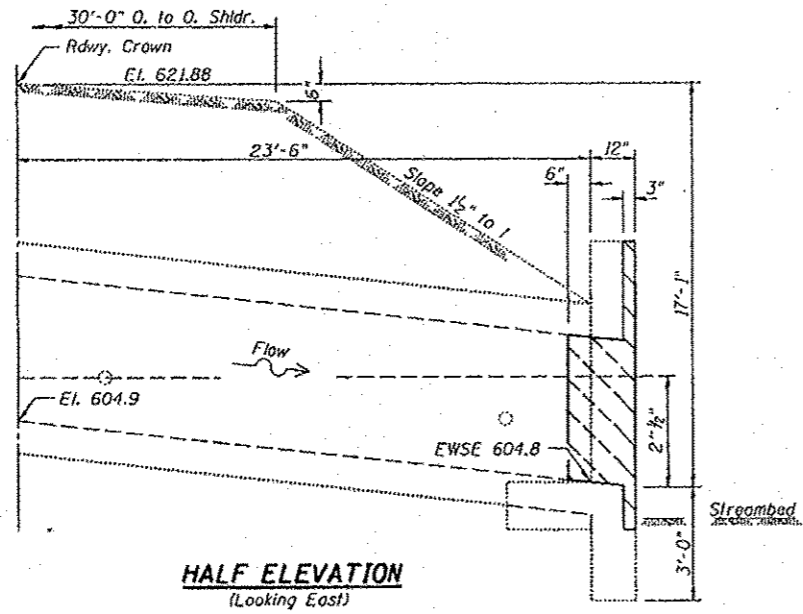
SECTION A-A N.E. Wingwall



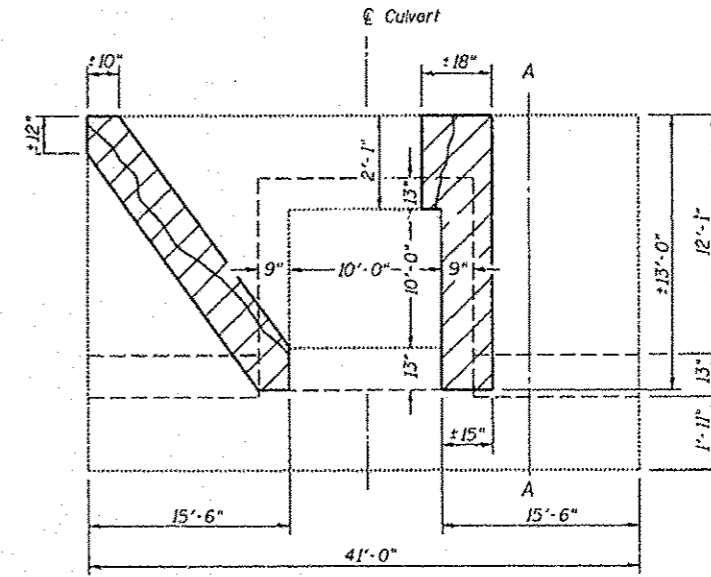
-  50300225 CONCRETE STRUCTURES
-  Z0012755 STRUCTURAL REPAIR OF CONC. > 5"

| | | | | | | | | | | | | |
|---|-------------------------------|--------------------|--------------------|---|--|-------------------------|--------------------------|-----------------------------|------------------|--------------------|-----------------|--|
| FILE NAME * S:\GEN\ORAF\1\5\06\PLANS\EGUARD\1\Wingwall P | USER NAME * johndoe | DESIGNED * KW | REVISED * ----- | STATE OF ILLINOIS DEPARTMENT OF TRANSPORTATION | N.E. Wingwall CULVERT NO. 066S17m05.150 | | F.A. RTE. 639 | SECTION (1231) | COUNTY MERCER | TOTAL SHEETS 14 | SHEET NO. 12 | |
| | PLLOT SCALE * NOT TO SCALE | CHECKED * ----- | REVISED * ----- | | SCALE: _____ | SHEET NO. 1 OF 5 SHEETS | STA. _____ TO STA. _____ | CONTRACT MAINTENANCE REPAIR | | CONTRACT NO. 68A29 | | |
| | PLLOT DATE * 7/17/2012 | DATE * ----- | REVISED * ----- | | ILLINOIS FED. AID PROJECT | | | | | | | |
| | | | | | | | | | | | | |

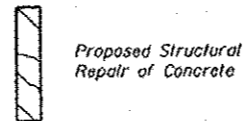
REINFORCED CONCRETE BOX CULVERT



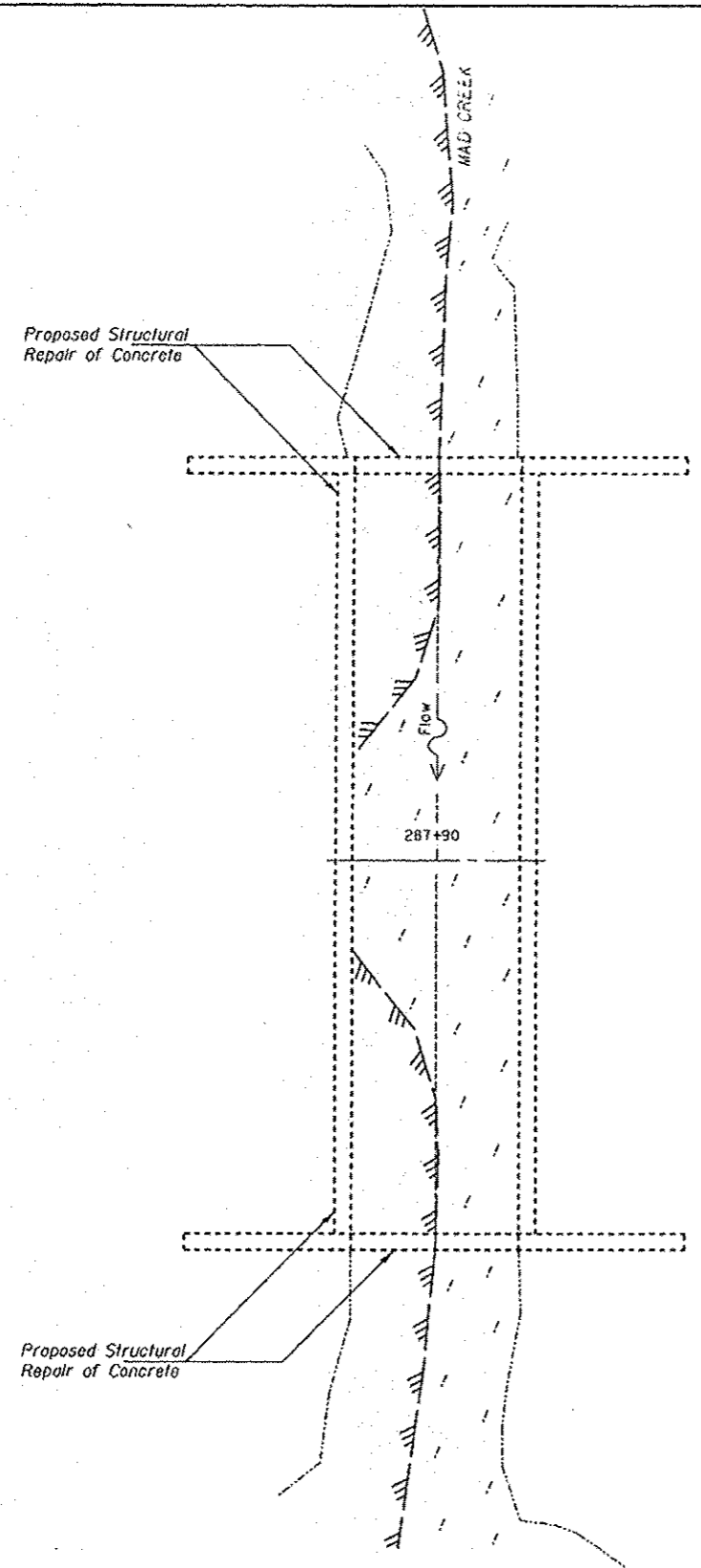
Class A concrete to be throughout. Proportions 1:2 1/2:4. For necessary replacements, use "m" bars in downstream headwall only.



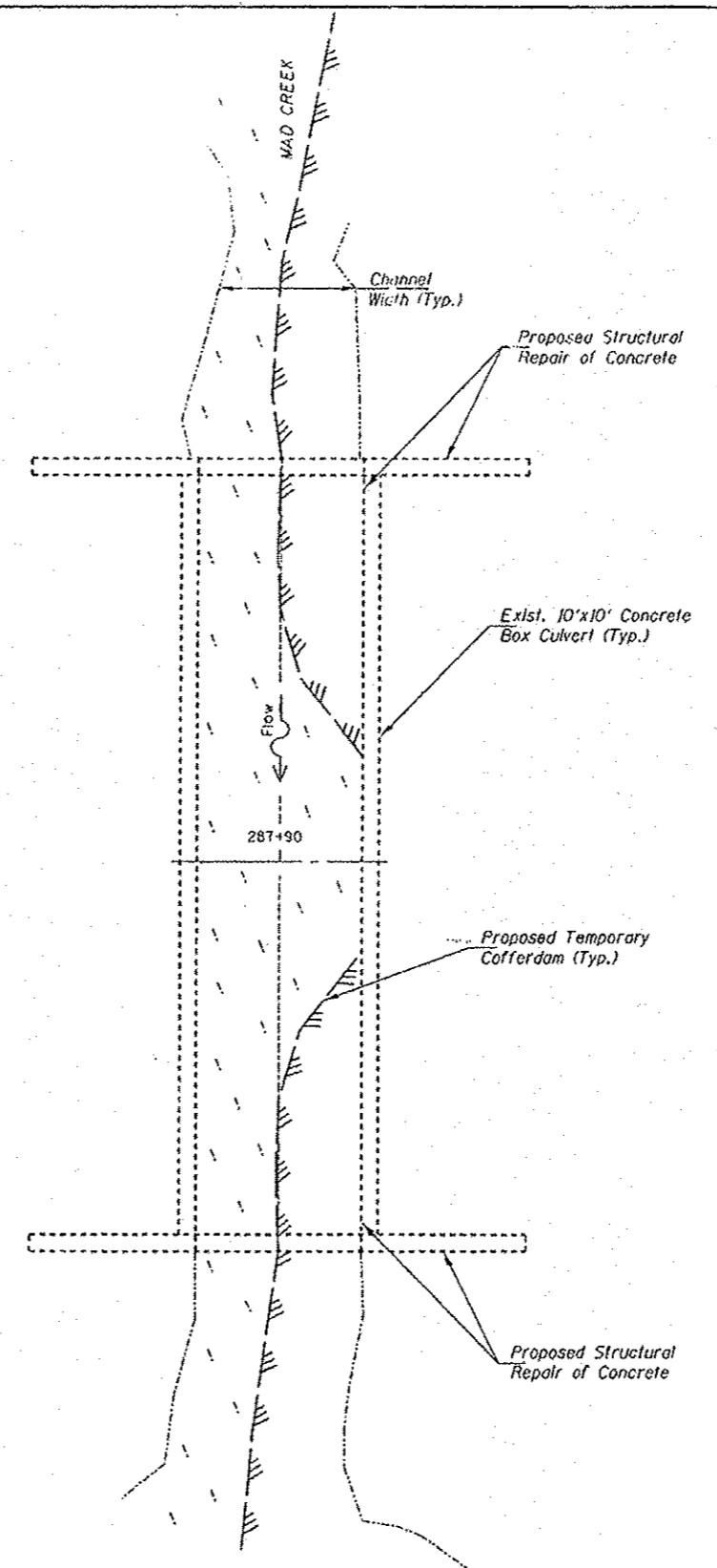
LEGEND



| | | | | | | | | | | | | |
|---|--|-------------------|-----------|---|---|---------------------------------|--------------------------|--|-------------------|------------------|--------------------------|--------------------|
| FILE NAME * S:\GEN\GRAFF\ASTO\PLNS\504014\Winter | USER NAME * jonesce Project\KYLE\6829.dgn | DESIGNED - CEJ | REVISED - | STATE OF ILLINOIS DEPARTMENT OF TRANSPORTATION | PROPOSED REPAIRS CULVERT NO. 066S17m05.150 | | | F.A.P. RTE. 639 | SECTION (1231) | COUNTY MERCER | TOTAL SHEET NO. 14 | SHEET NO. 13 |
| PLOT SCALE * 1/8" = 1' - 0" | CHECKED - | DATE - 06/18/2012 | REVISED - | | SCALE: _____ | SHEET NO. _____ OF _____ SHEETS | STA. _____ TO STA. _____ | CONTRACT MAINTENANCE REPAIR CONTRACT NO. 68A29 | | | | |
| PLOT DATE * 7/17/2012 | DATE - | REVISED - | REVISED - | | ILLINOIS FED. AID PROJECT | | | | | | | |
| | | | | | | | | | | | | |



Stage I



Stage II

NOTES
 The Contractor shall provide all channel and/or structure protection from stream flow event erosion or damage during construction. Any such damages during construction shall be repaired at no additional cost to the State. See Special Provisions for Dewatering.

PLAN

| | | | | | | | | | | | |
|--------------------------|--------------------------|-------------------|-----------|---|--|---------------------------|-----------------------------|-----------|--------------------|----------------|-------------|
| FILE NAME : 60A24.dgn | USER NAME : jansoco | DESIGNED - CEJ | REVISED - | STATE OF ILLINOIS DEPARTMENT OF TRANSPORTATION | COFFERDAM BYPASS SYSTEM DETAILS | | F.A.P. RTE. : | SECTION : | COUNTY : | TOTAL SHEETS : | SHEET NO. : |
| | PLT SCALE : NOT TO SCALE | DRAWN - CEJ | REVISED - | | 639 | (123) | MERCER | 14 | 14 | | |
| | PLT DATE : 12/17/2012 | CHECKED - | REVISED - | | CULVERT NO. 066S17m05.150 | | CONTRACT MAINTENANCE REPAIR | | CONTRACT NO. 6BA29 | | |
| | | DATE : 07/06/2012 | REVISED - | SCALE: _____ SHEET NO. _____ OF _____ SHEETS STA. _____ TO STA. _____ | | ILLINOIS REG. 410 PROJECT | | | | | |