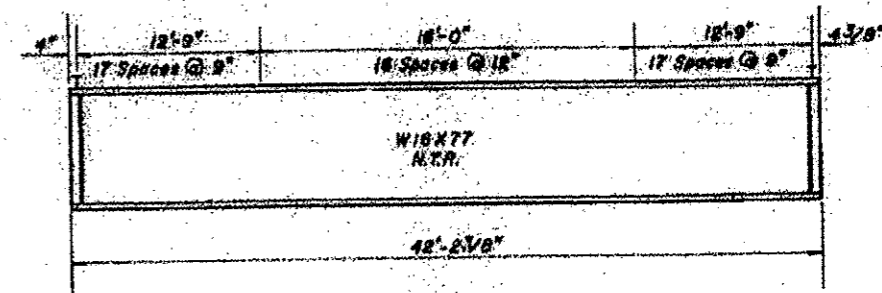
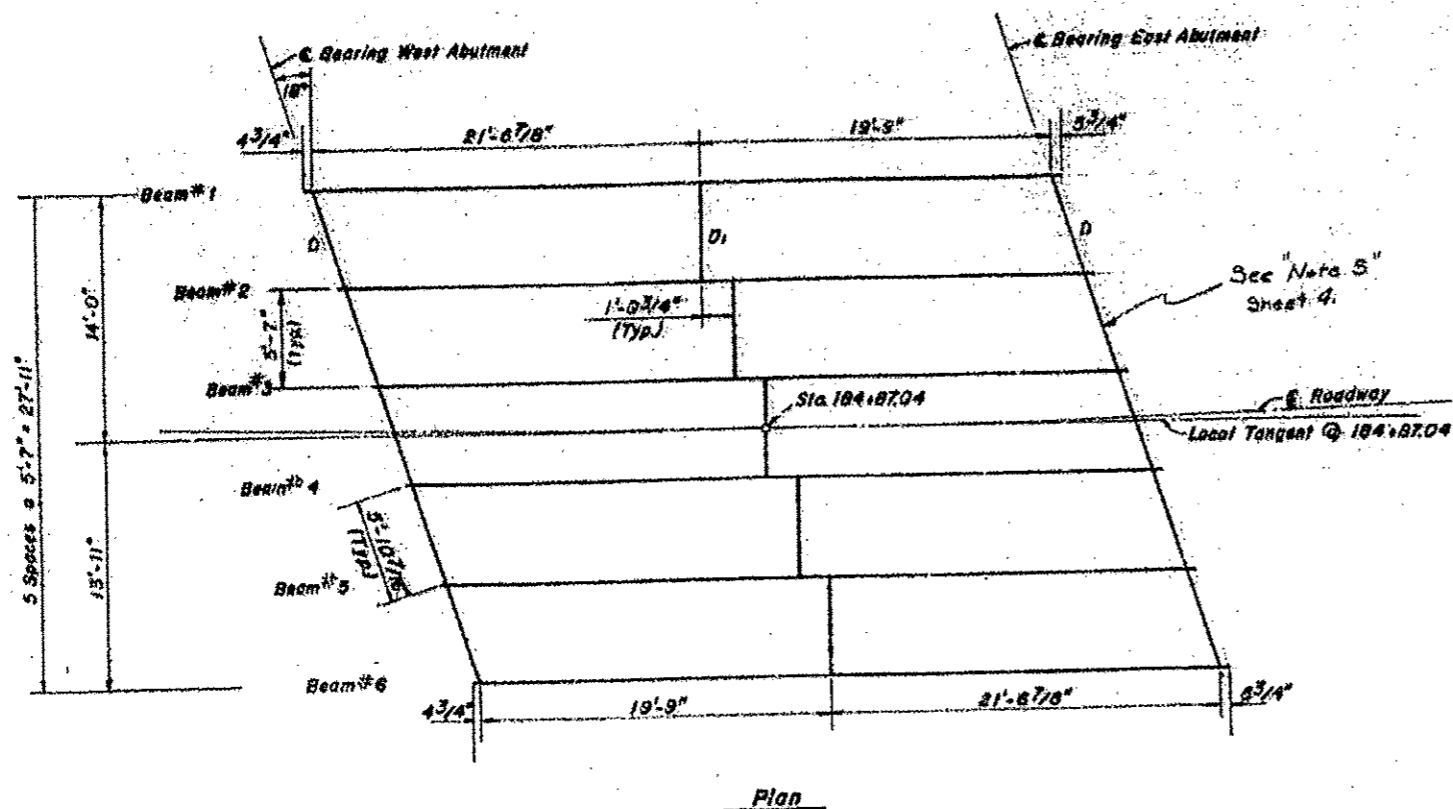
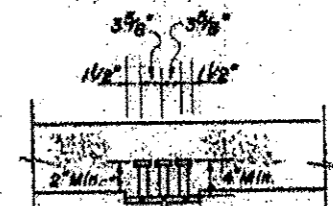


LOCATION 6 S.N. 036-0007 INFORMATION ONLY

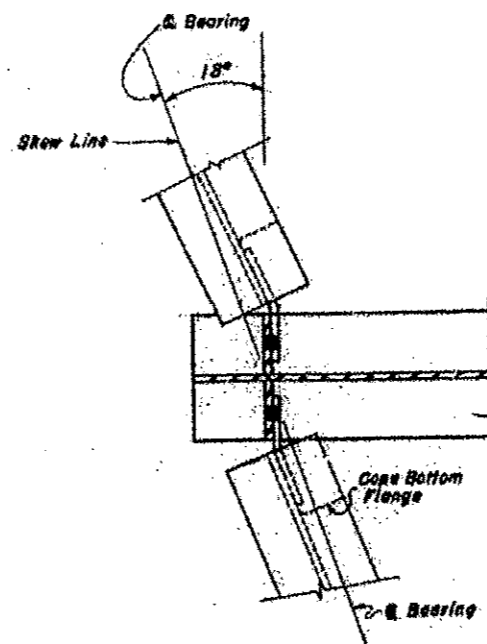


N.T.R. = Notch Toughness Requirement

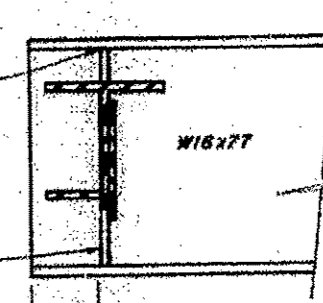


3/4" ϕ x 4" C.R. 10RQ
Steel granular or solid
flax headed studs.
Automatically and welded.

Shear Connectors
No. Req'd. ea. beam = 153



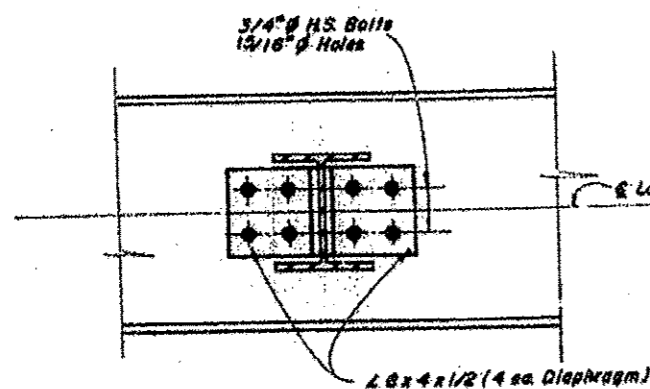
Tight Fit



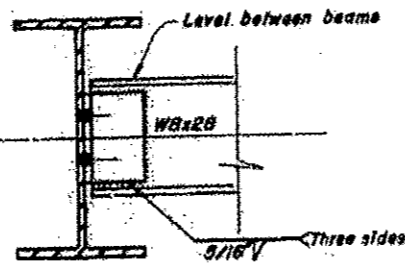
Connection E.
5" x 1/2"
(Omit facia side)

43/16" West Abut.
43/16" East Abut.

ϕ Bearing



Diaphragm D1
No. Req'd. = 3



| | | | | | | | | | | |
|--------------------------------------|------------------------------|-----------------|----------------|---|---|-------------------------------|---------|--------|--------------|--------------------|
| FILE NAME March 2013 Metalize.dgn | USER NAME DEFAULT | DESIGNED --- | REVISED --- | STATE OF ILLINOIS DEPARTMENT OF TRANSPORTATION | LOCATION 6 FRAMING PLAN - INFORMATION ONLY | F.A. RTE. | SECTION | COUNTY | TOTAL SHEETS | SHEET NO. |
| | PLOT SCALE = 0.8215" / 1m | DRAWN --- | REVISED --- | | SCALE: _____ | var D4 Bridge Metalizing 2013 | Verlous | 20 | 16 | |
| | PLOT DATE = 12/11/2012 | CHECKED --- | REVISED --- | | SHEET _____ OF _____ SHEETS | | | | | CONTRACT NO. 68825 |
| ILLINOIS FED. AID PROJECT | | | | | | | | | | |