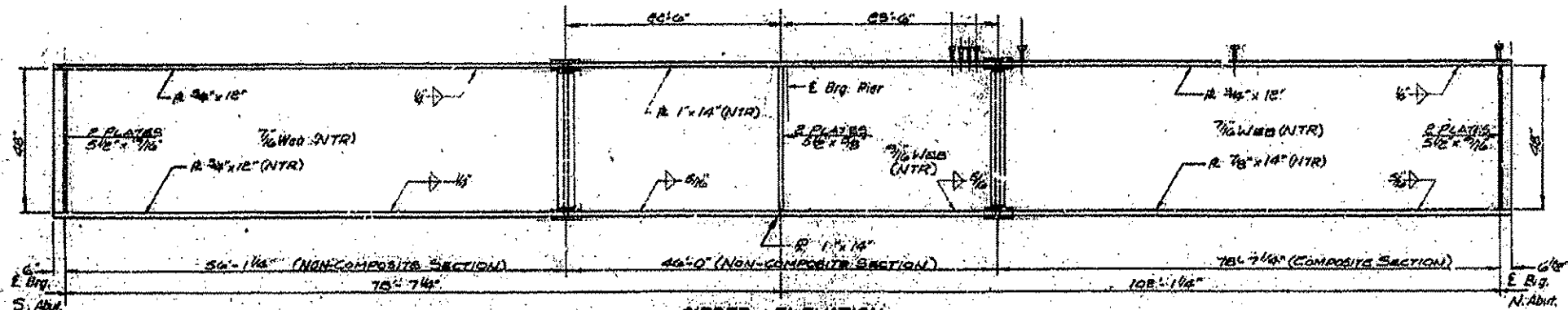
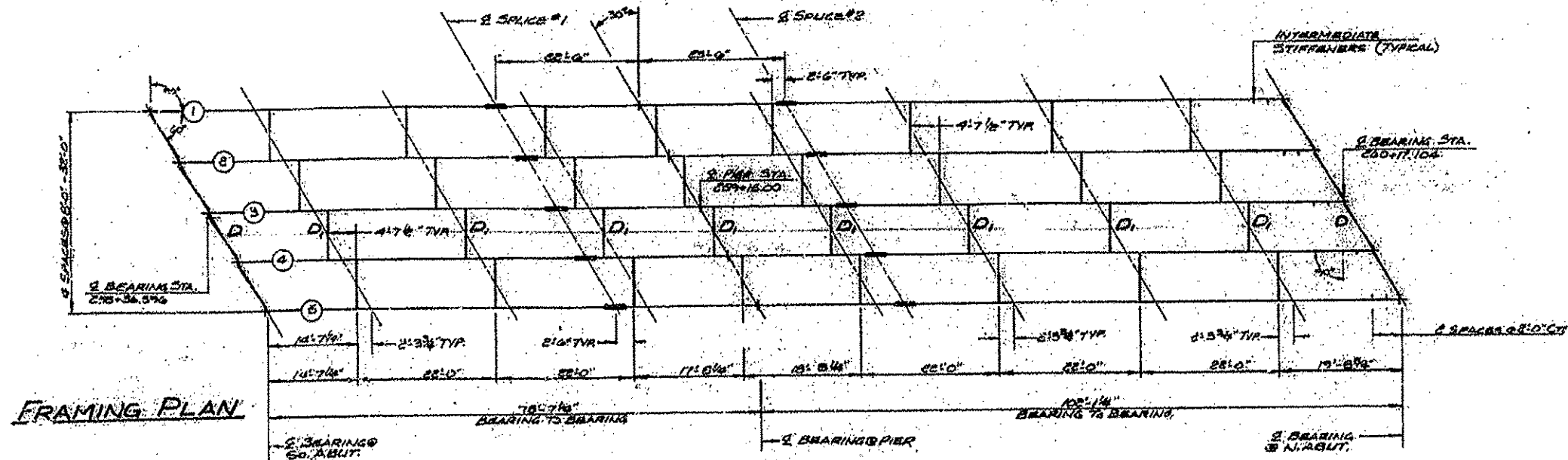
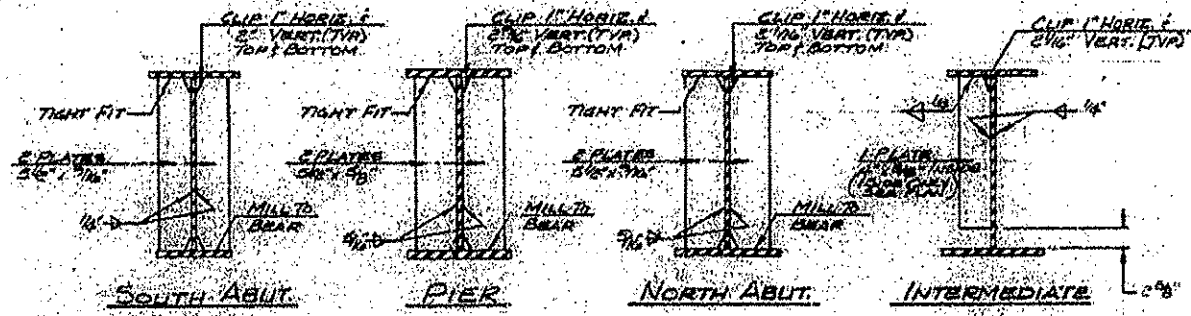


LOCATION 7 S.N. 029-0053 INFORMATION ONLY



GIRDER ELEVATION
 "NTR" denotes plates to which notch toughness requirements are applicable.



STIFFENER DETAILS

FILE NAME March 2012 Metalize.dgn	USER NAME DEFAULT	DESIGNED ---	REVISED ---	STATE OF ILLINOIS DEPARTMENT OF TRANSPORTATION	LOCATION 7 FRAMING PLAN - INFORMATION ONLY	SCALE ---	SHEET ---	OF ---	SHEETS ---	STA. ---	TO STA. ---	
#MODELNAME	PLOT SCALE 0.0219 / in.	CHECKED ---	REVISOR ---	CONTRACT NO. 68825				ILLINOIS FED. AID PROJECT				