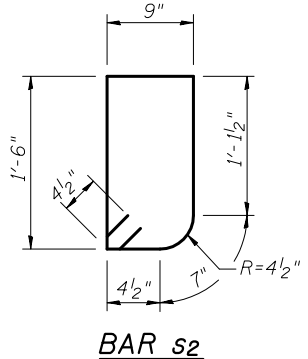
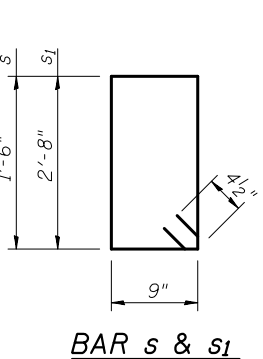
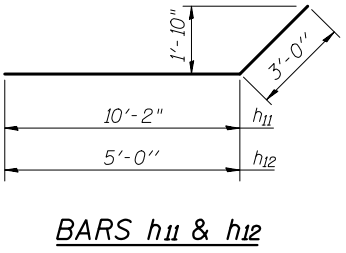
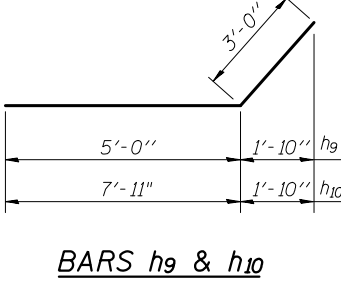
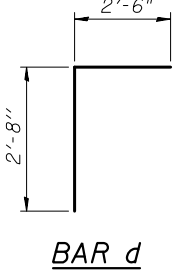
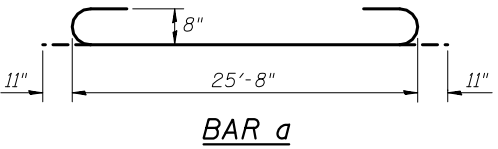
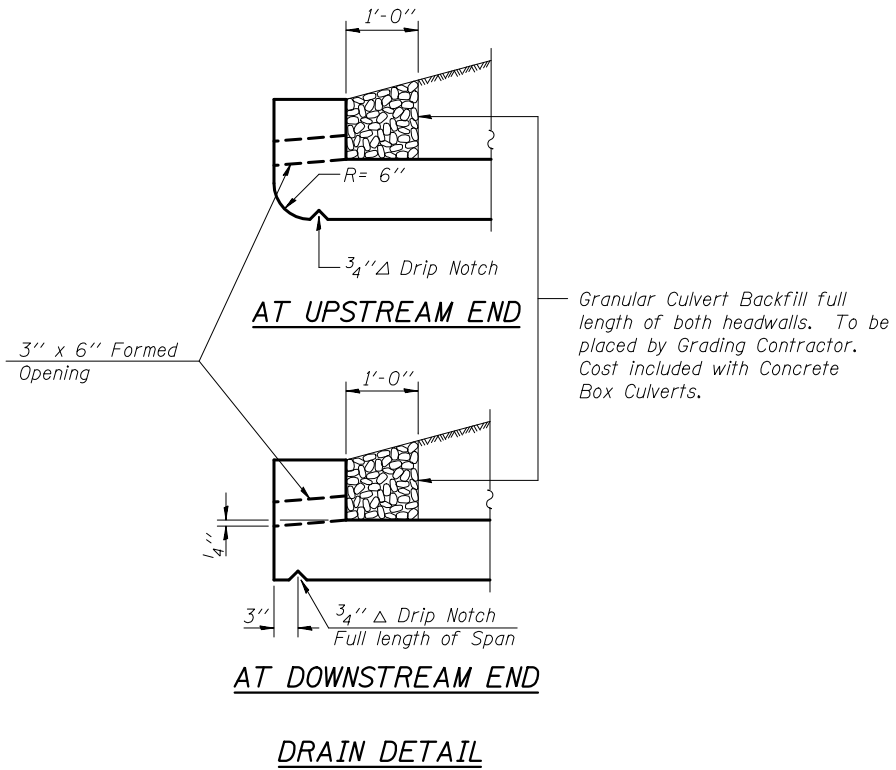


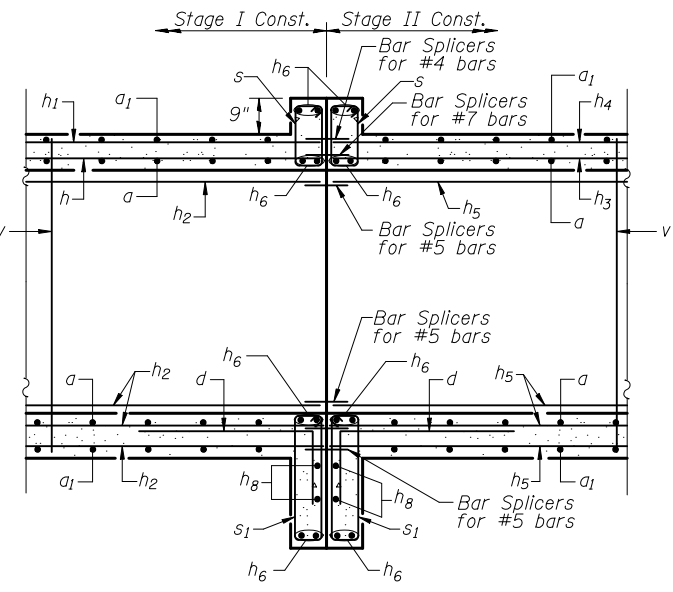
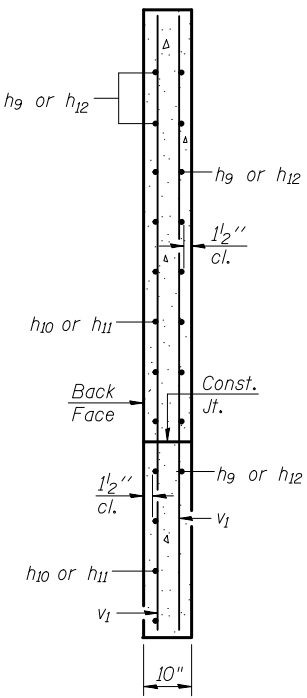
STATE OF ILLINOIS  
DEPARTMENT OF TRANSPORTATION



**BILL OF MATERIALS**

Bar	No.	Size	Length	Shape
a	236	#8	27'-6"	U
a1	236	#8	25'-8"	—
d	100	#4	5'-2"	L
h	52	#7	11'-7"	—
h1	52	#4	10'-11"	—
h2	134	#5	11'-1"	—
h3	78	#7	26'-0"	—
h4	78	#4	25'-0"	—
h5	201	#5	25'-3"	—
h6	28	#6	26'-2"	—
h7	4	#6	25'-10"	—
h8	8	#5	26'-2"	—
h9	20	#4	8'-0"	—
h10	20	#4	10'-11"	—
h11	20	#6	13'-2"	—
h12	20	#6	8'-0"	—
v	283	#4	6'-5"	—
v1	16	#4	9'-0"	—
s	105	#4	5'-3"	□
s1	104	#4	7'-7"	□
s2	35	#4	5'-1"	□
Reinforcement Bars			Pound	52,440
Concrete Box Culverts			Cu. Yd.	249

Notes:  
A distance of half the length of the wingwall but not less than six feet of the barrel shall be poured monolithically with the wingwalls.  
Bars indicated thus 12x4-#5 etc. indicates 12 lines of bars with 4 lengths per line.



USER NAME = \$USER*	DESIGNED BLM	REVISED -
PLOT SCALE = \$SCALE*	DRAWN TJR	REVISED -
PLOT DATE = \$DATE*	CHECKED JEK	REVISED -
	DATE 02-04-2013	REVISED -

STATE OF ILLINOIS  
DEPARTMENT OF TRANSPORTATION

<b>CULVERT DETAILS &amp; BILL OF MATERIALS</b>			
<b>STRUCTURE NO. 034-2527</b>			
SCALE: NTS	SHEET 5 OF 9 SHEETS	STA. 146+92.00	

F.A.P. RTE.	SECTION	COUNTY	TOTAL SHEETS	SHEET NO.
685	113 (B-4)	HANCOCK	62	41
CONTRACT NO. 72B62				
ILLINOIS FED. AID PROJECT				