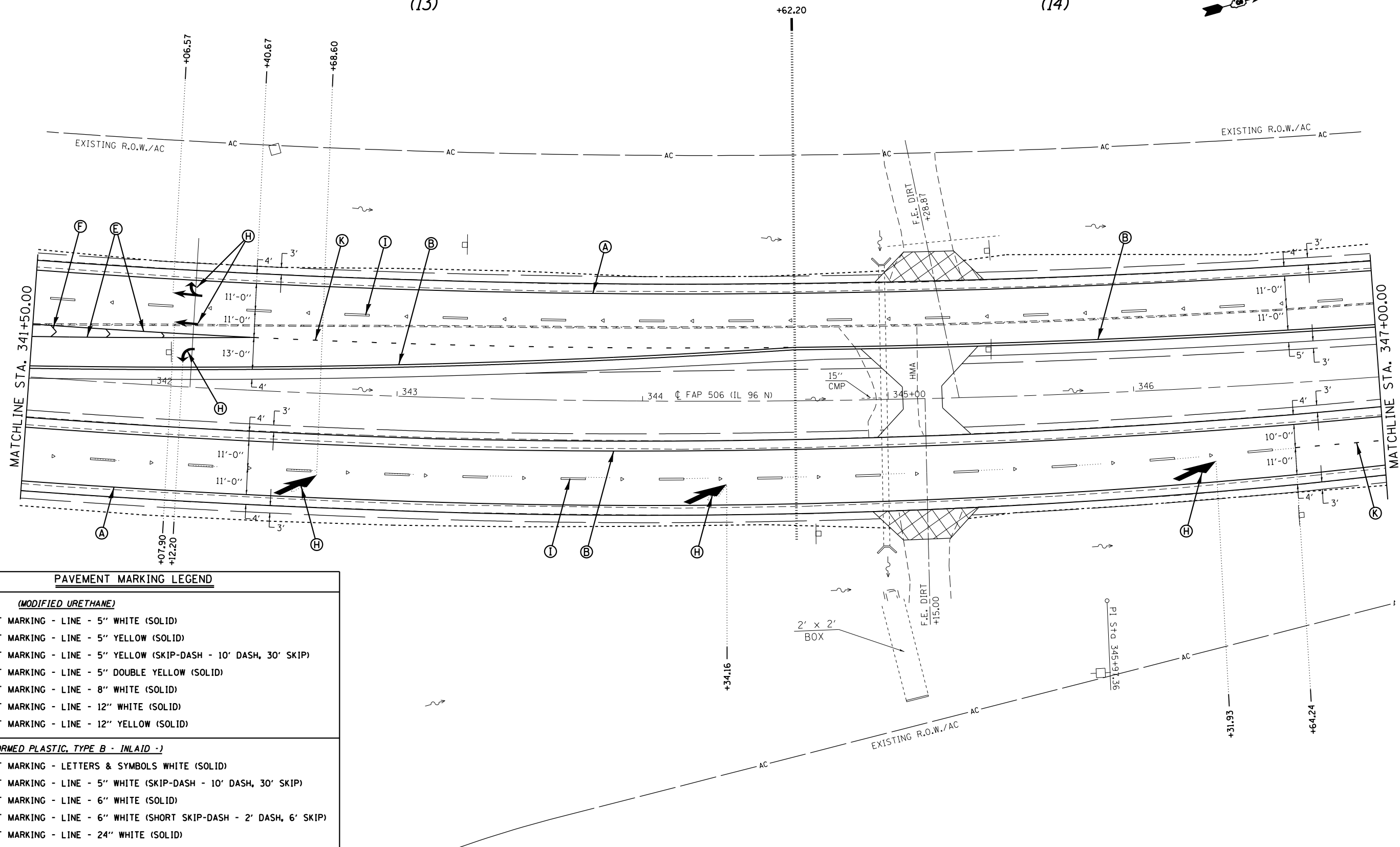


(13)

(14)



PAVEMENT MARKING LEGEND

(MODIFIED URETHANE)

- (A) PAVEMENT MARKING - LINE - 5" WHITE (SOLID)
- (B) PAVEMENT MARKING - LINE - 5" YELLOW (SOLID)
- (C) PAVEMENT MARKING - LINE - 5" YELLOW (SKIP-DASH - 10' DASH, 30' SKIP)
- (D) PAVEMENT MARKING - LINE - 5" DOUBLE YELLOW (SOLID)
- (E) PAVEMENT MARKING - LINE - 8" WHITE (SOLID)
- (F) PAVEMENT MARKING - LINE - 12" WHITE (SOLID)
- (G) PAVEMENT MARKING - LINE - 12" YELLOW (SOLID)

(PREFORMED PLASTIC, TYPE B - INLAID -)

- (H) PAVEMENT MARKING - LETTERS & SYMBOLS WHITE (SOLID)
- (I) PAVEMENT MARKING - LINE - 5" WHITE (SKIP-DASH - 10' DASH, 30' SKIP)
- (J) PAVEMENT MARKING - LINE - 6" WHITE (SOLID)
- (K) PAVEMENT MARKING - LINE - 6" WHITE (SHORT SKIP-DASH - 2' DASH, 6' SKIP)
- (L) PAVEMENT MARKING - LINE - 24" WHITE (SOLID)

FILE NAME =	USER NAME = sparksgw	DESIGNED -	REVISED -
et:\pw\work\p\midot\sparksgw\0259630\0672E31-sht\pmkplan_1201.dgn		DRAWN -	REVISED -
Default	PLOT SCALE = 40.0000' / in.	CHECKED -	REVISED -
	PLOT DATE = Dec-14-2012 03:45:53PM	DATE -	REVISED -

**STATE OF ILLINOIS
DEPARTMENT OF TRANSPORTATION**

PAVEMENT MARKING SHEETS

SCALE: 20 SHEET 11 OF 14 SHEETS STA. 341+50.00 TO STA. 347+00.00

• FAP 63 (US 24); FAP 63 (US 24/IL 96); FAP 506 (IL 96)			
F.A.P. RTE.	SECTION	COUNTY	TOTAL SHEETS
	(1)N,TS-2RS-5&(7B)RS-3	ADAMS	194
CONTRACT NO. 72E31			SHEET NO. 130
ILLINOIS FED. AID PROJECT			