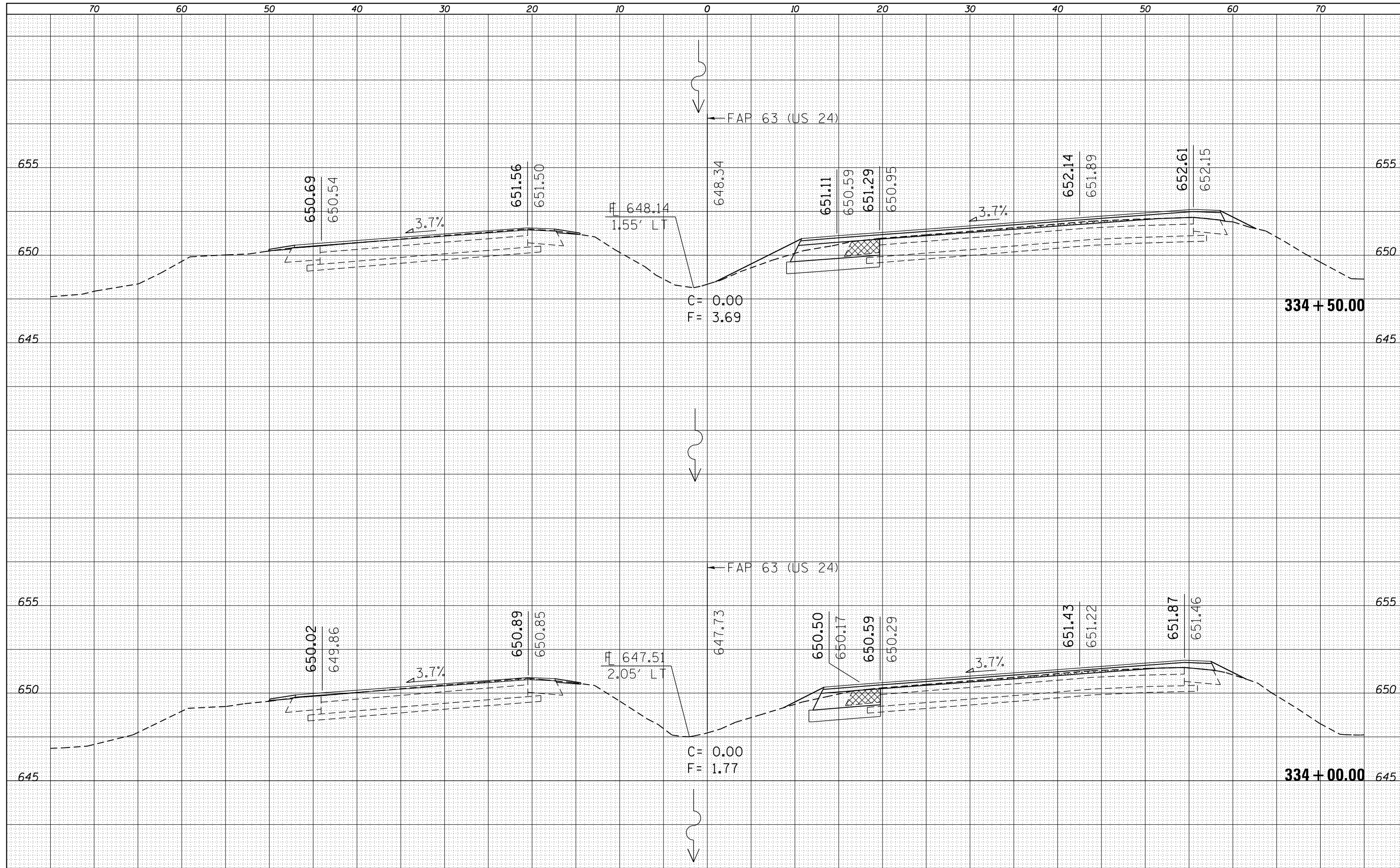


DATE	
BY	
SURVEYED	
PLOTTED	
TEMPLATE	
NOTE BOOK	
AREAS CHECKED	
NO.	

DATE	
BY	
SURVEYED	
PLOTTED	
TEMPLATE	
NOTE BOOK	
AREAS CHECKED	
NO.	



FILE NAME =
 c:\pw\work\p1dot\sparksgw\d0259630\0672E31-sh-xssht IL96(50).dgn
 Default

USER NAME = sparksgw	DESIGNED -	REVISD -
PLLOT SCALE = 10.0000 / in.	DRAWN -	REVISD -
PLLOT DATE = Dec-14-2012 03:46:42PM	CHECKED -	REVISD -
	DATE -	REVISD -

**STATE OF ILLINOIS
 DEPARTMENT OF TRANSPORTATION**

CROSS SECTIONS
 SCALE: SHEET 28 OF 52 SHEETS STA. 334+00.00 TO STA. 334+50.00

F.A.P. RTE.	SECTION	COUNTY	TOTAL SHEETS	SHEET NO.
•	(1)N,TS-2RS-5&(7)RS-3	ADAMS	194	170
CONTRACT NO. 72E31				

ILLINOIS FED. AID PROJECT
 • FAP 63 (US 24); FAP 63 (US 24/IL 96); FAP 506 (IL 96)