

STATE OF ILLINOIS
DEPARTMENT OF TRANSPORTATION
DIVISION OF HIGHWAYS

F.A.P. RTE.	SECTION	COUNTY	TOTAL SHEETS	SHEET NO.
502	(53) N-1	ADAMS	20	1
FED. ROAD DIST. NO. 6		ILLINOIS	CONTRACT NO. 72F46	

FOR INDEX OF SHEETS, AND HIGHWAY STANDARDS SEE SHEET NO. 2

**PROPOSED
HIGHWAY PLANS**

FAP ROUTE 502 (IL 57)
SECTION (53) N-1
PROJECT F-0502(015)
INTERSECTION IMPROVEMENTS
ADAMS COUNTY

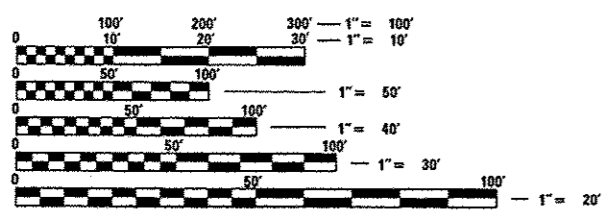
C-96-063-12

D-96-063-12



LOCATION OF SECTION INDICATED THUS: —■—

DESIGN DESIGNATION:
FAP 502
OTHER PRINCIPAL ARTERIAL (URBAN)
ADT = 5100 (2012) 6100 (2032)
%SU = 8
%MU = 12

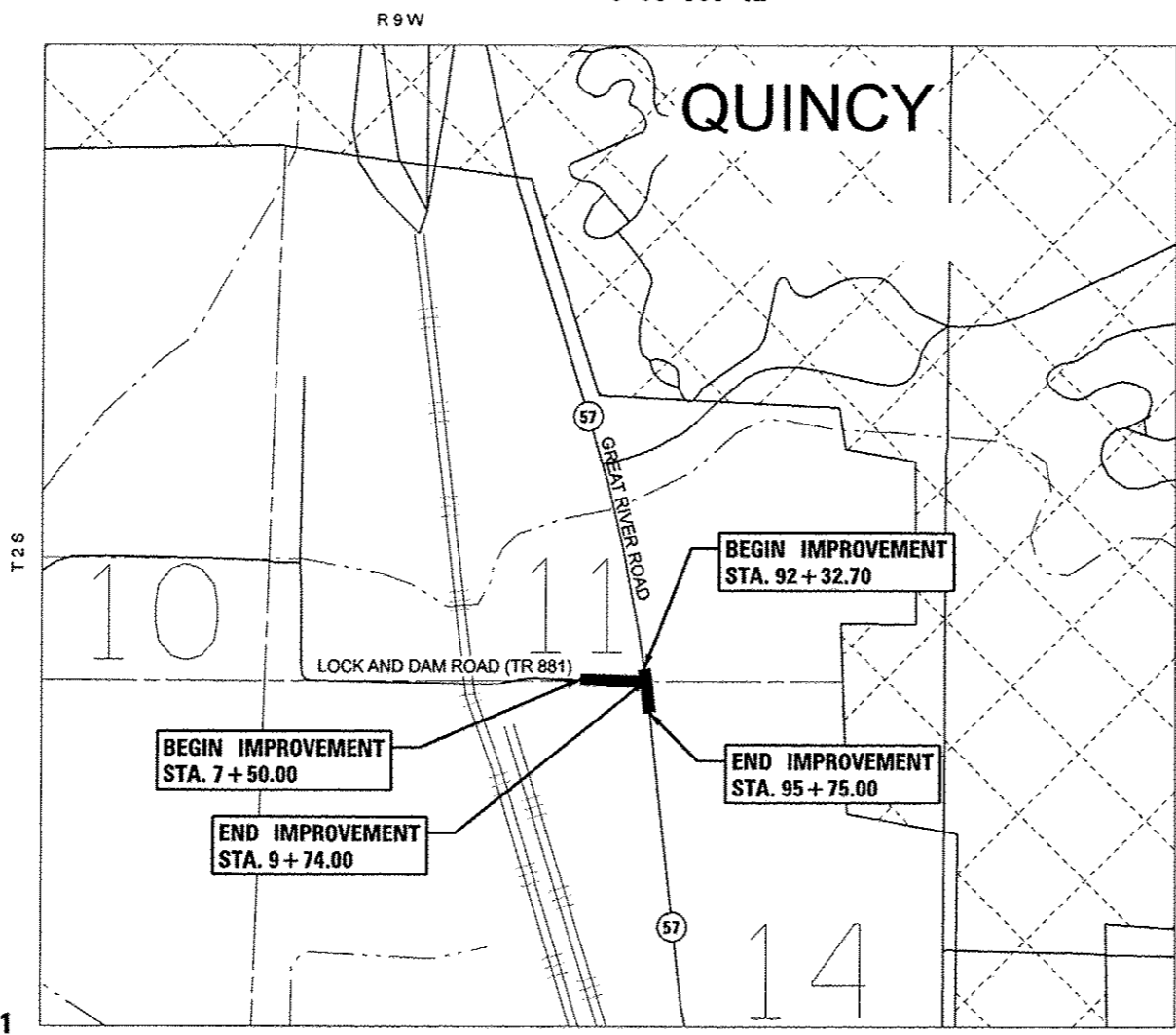


FULL SIZE PLANS HAVE BEEN PREPARED USING STANDARD ENGINEERING SCALES. REDUCED SIZED PLANS WILL NOT CONFORM TO STANDARD SCALES. IN MAKING MEASUREMENTS ON REDUCED PLANS, THE ABOVE SCALES MAY BE USED.

J.U.L.I.E.
JOINT UTILITY LOCATION INFORMATION FOR EXCAVATION
1-800-892-0123
OR 811

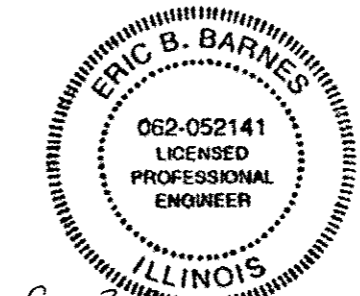
PROJECT ENGINEER: JEFF MYERS (217) 782-4761
PROJECT MANAGER: ED KERN (217) 524-7547

CONTRACT NO. 72F46



LOCATION MAP
SCALE: 1" = 500'

GROSS/NET LENGTH IL 57 SECTION = 342.3 FT = 0.065 MILES
GROSS/NET LENGTH LOCK & DAM ROAD SECTION = 224.00 FT = 0.042 MILES
TOTAL LENGTH = 566.3 FT = 0.107 MILES



Eric B. Barnes
12-12-12
ERIC B. BARNES DATE
REGISTERED PROFESSIONAL ENGINEER
STATE OF ILLINOIS NO. 062-052141
LICENSE EXPIRES NOVEMBER 30, 2013

STATE OF ILLINOIS
DEPARTMENT OF TRANSPORTATION
DIVISION OF HIGHWAYS

SUBMITTED Dec. 14 20 12
Roger D. Dill
DEPUTY DIRECTOR OF HIGHWAYS, REGION ENGINEER

Feb 1 20 13
John D. Baramelli PE/br
ENGINEER OF DESIGN AND ENVIRONMENT

Feb 1 20 13
Omer Osman, P.E./br
DIRECTOR OF HIGHWAYS, CHIEF ENGINEER

PLANS PREPARED BY:
KLINGNER & ASSOCIATES, P.C.
Engineers • Architects • Surveyors
805 North 24th Street, Quincy, IL 62301-2729
4528 Paris Gravel Road, Normal, IL 62450
1118 N. 14th Street, Suite 100, Burlington, IL 62018
211 North Prairie Street, Salsburg, IL 62455
Internet Address: www.klingner.com
Ph: (217) 223-3679 • Fax: (217) 223-3683
Ph: (618) 223-8828 • Fax: (618) 223-8812
Ph: (618) 753-3636 • Fax: (618) 753-3645
Ph: (618) 342-4912 • Fax: (618) 342-3778
STATE OF ILLINOIS DESIGN FIRM # 1842738

**PRINTED BY THE AUTHORITY
OF THE STATE OF ILLINOIS**

INDEX OF SHEETS

SHEET NO.	DESCRIPTION
1	COVER SHEET
2	SHEETS INDEX & GENERAL NOTES
3-6	SUMMARY OF QUANTITIES
7-8	SCHEDULE OF QUANTITIES
9	TYPICAL SECTIONS
10	HORIZONTAL ALIGNMENT, CONTROL TIES & BENCHMARK DATA
11-12	PLAN & PROFILES
13	GEOMETRIC DETAIL SHEET
14	MISCELLANEOUS DETAILS
15	CROSS SECTIONS - FAP RTE 502 (IL 57)
16-20	CROSS SECTIONS - LOCK & DAM ROAD

STANDARDS

STANDARD NOS.

000001-06	701101-03
280001-07	701421-05
606001-05	701501-06
606006-02	701901-02
606301-04	780001-03
666001-01	782001

RATES OF APPLICATION TABLE

AGGREGATE (SURFACE, BASE, SUBBASE, OR BACKFILL)	2.05 TON / CU YD
STONE DUMPED RIPRAP	1.50 TON / CU YD
HOT-MIX ASPHALT:	
BITUMINOUS MATERIALS (PRIME COAT)	0.00038 TON / SQ YD (on pavement)
BITUMINOUS MATERIALS (PRIME COAT)	0.001425 TON / SQ YD (on aggregate)
AGGREGATE PRIME COAT	0.002 TON / SQ YD
SURFACE / BINDER (112 lbs)	0.056 TON / SQ YD • IN
SEEDING:	
NITROGEN FERTILIZER NUTRIENT	90 LBS / ACRE
PHOSPHORUS FERTILIZER NUTRIENT	90 LBS / ACRE
POTASSIUM FERTILIZER NUTRIENT	90 LBS / ACRE
AGRICULTURAL GROUND LIMESTONE	2.0 TON / ACRE
MULCH METHOD	2.0 TON / ACRE

COMMITMENTS

- FIELD/RESIDENT ENGINEER SHALL CONTACT STUDIES AND PLANS CONCERNING ANY MAJOR PLAN CHANGE TO MAKE SURE NO PREVIOUS COMMITMENTS (NOT LISTED) WERE MADE AFFECTING THE DESIGN, AND ALLOW AN IMPROVED DESIGN FOR FUTURE PROJECTS.

GENERAL NOTES

- THE THICKNESS OF BITUMINOUS MIXTURES SHOWN ON THE PLANS IS THE NOMINAL THICKNESS. DEVIATIONS FROM THE NOMINAL THICKNESS WILL BE PERMITTED WHEN SUCH DEVIATIONS OCCUR DUE TO IRREGULARITIES IN THE EXISTING SURFACE OR BASE ON WHICH THE BITUMINOUS MIXTURE IS PLACED.
- THE CONTRACTOR SHALL PROTECT AND CAREFULLY PRESERVE ALL PROPERTY MARKERS AND MONUMENTS UNTIL THE OWNER, AUTHORIZED AGENT, OR LAND SURVEYOR HAS WITNESSED OR OTHERWISE REFERENCED THEIR LOCATION. WHERE SECTION OR SUB-SECTION MONUMENTS ARE ENCOUNTERED, THE ENGINEER SHALL BE NOTIFIED BEFORE SUCH MONUMENTS ARE REMOVED. THE CONTRACTOR SHALL BE RESPONSIBLE FOR HAVING AN AUTHORIZED SURVEYOR RE-ESTABLISH ANY SECTION OR SUB-SECTION MONUMENTS DESTROYED BY HIS OPERATIONS.
- ALL DISTURBED AREAS WITHIN THE RIGHT-OF-WAY SHALL BE SEEDED, FERTILIZED, AND MULCHED AS SHOWN IN THE PLANS AND AS DIRECTED BY THE ENGINEER.
- DO NOT INCLUDE MULCH OR EMULSIFIED ASPHALT ON EROSION CONTROL BLANKET AREAS.
- THE CONTRACTOR SHALL BE RESPONSIBLE FOR PROTECTING UTILITY PROPERTY FROM CONSTRUCTION OPERATIONS, AS OUTLINED IN ARTICLE 107.31 OF THE STANDARD SPECIFICATIONS. THE J.U.L.I.E. NUMBER IS 1-800-892-0123. A MINIMUM OF 48 HOURS ADVANCE NOTICE IS REQUIRED.
- THE LOCATION OF BURIED AND ABOVE GROUND UTILITIES SHOWN ARE APPROXIMATE, AND ARE SHOWN FOR CONTRACTOR INFORMATIONAL USE ONLY, AND ARE NOT TO BE REFERENCED FOR CONSTRUCTION PURPOSES. THE IMPLIED PRESENCE OR ABSENCE OF UTILITIES IS NOT TO BE CONSTRUED BY THE OWNER, ENGINEER, CONTRACTOR, OR SUBCONTRACTORS TO BE AN ACCURATE AND COMPLETE REPRESENTATION OF UTILITIES THAT MAY OR MAY NOT EXIST ON THE CONSTRUCTION SITE. BURIED AND ABOVE GROUND UTILITY LOCATIONS, IDENTIFICATION, AND MARKING ARE THE SOLE RESPONSIBILITY OF THE CONTRACTOR. REROUTING, DISCONNECTION, PROTECTION, ETC. OF ANY UTILITIES MUST BE COORDINATED BETWEEN THE CONTRACTOR, UTILITY COMPANY, AND OWNER. SITE SAFETY, INCLUDING THE AVOIDANCE OF HAZARDS ASSOCIATED WITH BURIED AND ABOVE GROUND UTILITIES, REMAINS THE SOLE RESPONSIBILITY OF THE CONTRACTOR.
- IN ADDITION TO FIELD SURVEYS, PLAN DIMENSIONS AND DETAILS RELATIVE TO THE EXISTING FACILITIES HAVE BEEN TAKEN FROM EXISTING PLANS AND ARE SUBJECT TO CONSTRUCTION VARIATIONS. IT SHALL BE THE CONTRACTOR'S RESPONSIBILITY TO VERIFY SUCH DIMENSIONS AND DETAILS IN THE FIELD. SUCH VARIATIONS SHALL NOT BE A CAUSE FOR ADDITIONAL COMPENSATION DUE TO A CHANGE IN THE SCOPE OF WORK; HOWEVER, THE CONTRACTOR WILL BE PAID FOR THE QUANTITY ACTUALLY FURNISHED AT THE UNIT PRICE BID FOR THE WORK.
- ANY REFERENCE TO A STANDARD IN THESE PLANS SHALL BE INTERPRETED TO MEAN THE EDITION AS INDICATED BY THE SUB-NUMBER IN THE INDEX OF SHEETS OR THE COPY OF THE STANDARD INCLUDED IN THESE PLANS.
- ANY EXISTING ROAD SIGNS THAT INTERFERE WITH CONSTRUCTION WILL BE REMOVED OR RELOCATED AS DIRECTED BY THE ENGINEER. AFTER THE CONSTRUCTION IS COMPLETED, THE CONTRACTOR WILL REPLACE THE SIGNS AS DIRECTED BY THE ENGINEER. THIS WORK WILL NOT BE PAID SEPARATELY BUT SHALL BE CONSIDERED INCIDENTAL TO THE CONTRACT AND NO COMPENSATION WILL BE ALLOWED.
- EXISTING RAISED REFLECTIVE PAVEMENT MARKERS SHALL BE REMOVED PRIOR TO HOT-MIX ASPHALT SURFACE REMOVAL AND/OR RESURFACING.
- NO PASSING ZONES SHALL BE FIELD VERIFIED BY OPERATIONS, (217) 785-5312, 14 DAYS PRIOR TO FINAL PAVEMENT MARKINGS.
- ALL SAW CUTS, NECESSARY TO COMPLETE THE WORK DETAILED IN THESE PLANS, SHALL BE INCLUDED IN THE COST FOR THE VARIOUS PAY ITEMS INVOLVED. THE MINIMUM SAW CUT DEPTH IN THE PAVEMENT SHALL BE 2 1/2" UNLESS OTHERWISE SPECIFIED IN A DETAIL SHOWN IN THE PLANS.
- UNLESS DIRECTED BY THE ENGINEER, PAVEMENT MARKING LINES SHALL NOT BE LAID DIRECTLY OVER A LONGITUDINAL CRACK OR JOINT NOR OVER A TAR OR ASPHALT PAINTED LINE. THE EDGE OF A CENTERLINE OR LANE LINE SHALL BE OFFSET A MINIMUM DISTANCE OF 2" FROM A LONGITUDINAL CRACK OR JOINT. EDGE LINES SHALL BE APPROXIMATELY 2" FROM THE EDGE LINE OF PAVEMENT. SEE SECTION 780 OF THE STANDARD SPECIFICATIONS FOR TRAFFIC CONTROL ITEMS.
- THE FOLLOWING MIXTURE REQUIREMENTS ARE APPLICABLE FOR THIS PROJECT:

LOCATION(S):	HMA SURF CSE	INCIDENTAL SURF	LEVELING BINDER
MIXTURE USE(S):	PG 64-22	PG 64-22	PG 64-22
AC/PG:	4.0% @ N DESIGN=70	4.0% @ N DESIGN=50	4.0% @ N DESIGN=70
DESIGN AIR VOIDS:	IL 9.5	IL 9.5	IL 9.5
MIXTURE COMPOSITION:	MIX "C"	MIX "C"	N/A
(GRADATION MIXTURE)			
FRICTION AGGREGATE			

GENERAL NOTES

- SEEDING WILL NOT BE PERMITTED AT ANY TIME WHEN THE GROUND IS FROZEN, WET, OR IN AN UNTILLABLE CONDITION. LOCATIONS TO BE SEEDED SHALL BE DETERMINED BY THE ENGINEER.
- ACCESS TO ALL SIDEROADS AND ENTRANCES SHALL BE MAINTAINED AT ALL TIMES.

EXAMINED	<i>Nov 30</i>	20	<i>12</i>
<i>Jeremy L. J.</i>			
PROJECT IMPLEMENTATION ENGINEER			
EXAMINED	<i>Dec. 4</i>	20	<i>12</i>
<i>JRM/L</i>			
PROGRAM DEVELOPMENT ENGINEER			
DISTRICT SIX			
EXAMINED	<i>Dec 5</i>	20	<i>13</i>
<i>William R. Bunn</i>			
OPERATIONS ENGINEER			

FILE NAME: g:\2011\12\22\24\163 - 11 57 and 10 road\road sheets\0672F46 sub-GemNotes.dgn	USER NAME: eba	DESIGNED: -	REVISED: -	STATE OF ILLINOIS DEPARTMENT OF TRANSPORTATION	SHEET INDEX & GENERAL NOTES	F.A.P. RTE. 502	SECTION (53) N-1	COUNTY ADAMS	TOTAL SHEETS 20	SHEET NO. 2	
PLOT SCALE: 1/8"=1'-0"	PLOT DATE: 12/12/2012	DRAWN: -	REVISED: -			CONTRACT NO. 72F46					
		CHECKED: -	REVISED: -			SCALE: none SHEET NO. 1 OF 1 SHEETS STA. TO STA.					
		DATE: -	REVISED: -			FED. ROAD DIST. NO. 6 ILLINOIS FED. AID PROJECT					

45

CODE NO.	ITEM	UNIT	TOTAL QUANTITY	CONSTRUCTION CODE					
				80% FED 20% STATE ROADWAY 0005 URBAN					
20200100	EARTH EXCAVATION	CU YD	170	170					
28000500	INLET AND PIPE PROTECTION	EACH	1	1					
31101000	SUBBASE GRANULAR MATERIAL, TYPE B	TON	100	100					
35400500	PORTLAND CEMENT CONCRETE BASE COURSE WIDENING 10"	SQ YD	231	231					
40600200	BITUMINOUS MATERIALS (PRIME COAT)	TON	0.9	0.9					
40600300	AGGREGATE (PRIME COAT)	TON	6	6					
40600635	LEVELING BINDER (MACHINE METHOD), N70	TON	62	62					
40600990	TEMPORARY RAMP	SQ YD	264	264					
40603315	HOT-MIX ASPHALT SURFACE COURSE, MIX "C", N70	TON	93	93					
40800050	INCIDENTAL HOT-MIX ASPHALT SURFACING	TON	8	8					
42001300	PROTECTIVE COAT	SQ YD	324	324					
42300600	PORTLAND CEMENT CONCRETE DRIVEWAY PAVEMENT, 10 INCH	SQ YD	140	140					
44000100	PAVEMENT REMOVAL	SQ YD	11	11					
44000200	DRIVEWAY PAVEMENT REMOVAL	SQ YD	135	135					

CODE NO.	ITEM	UNIT	TOTAL QUANTITY	CONSTRUCTION CODE					
				80% FED 20% STATE ROADWAY 0005 URBAN					
44000300	CURB REMOVAL	FOOT	45	45					
44000500	COMBINATION CURB AND GUTTER REMOVAL	FOOT	465	465					
44003100	MEDIAN REMOVAL	SO FT	203	203					
60600095	CLASS SI CONCRETE (OUTLET)	CU YD	2.5	2.5					
60600605	CONCRETE CURB, TYPE B	FOOT	74	74					
60605000	COMBINATION CONCRETE CURB AND GUTTER, TYPE B-6.24	FOOT	384	384					
60605500	COMBINATION CONCRETE CURB AND GUTTER, TYPE B-6.24 (VAR WIDTH GUTTER FLAG)	FOOT	10	10					
60608600	COMBINATION CONCRETE CURB AND GUTTER, TYPE M-6.06	FOOT	11	11					
60609200	COMBINATION CONCRETE CURB AND GUTTER, TYPE M-6.12	FOOT	28	28					
60618300	CONCRETE MEDIAN SURFACE, 4 INCH	SO FT	63	63					
66600105	FURNISHING AND ERECTING RIGHT OF WAY MARKERS	EACH	2	2					
67000400	ENGINEER'S FIELD OFFICE, TYPE A	CAL MO	6	6					
67100100	MOBILIZATION	L SUM	1	1					
70100310	TRAFFIC CONTROL AND PROTECTION, STANDARD 701421	L SUM	1	1					

CODE NO.	ITEM	UNIT	TOTAL QUANTITY	CONSTRUCTION CODE					
				80% FED 20% STATE ROADWAY 0005 URBAN					
70102620	TRAFFIC CONTROL AND PROTECTION, STANDARD 701501	L SUM	1	1					
70103815	TRAFFIC CONTROL SURVEILLANCE	CAL DA	10	10					
70106800	CHANGEABLE MESSAGE SIGN	CAL MO	6	6					
70300100	SHORT TERM PAVEMENT MARKING	FOOT	72	72					
70300230	TEMPORARY PAVEMENT MARKING - LINE 5"	FOOT	1174	1174					
70300250	TEMPORARY PAVEMENT MARKING - LINE 8"	FOOT	105	105					
70300260	TEMPORARY PAVEMENT MARKING - LINE 12"	FOOT	51	51					
70300280	TEMPORARY PAVEMENT MARKING - LINE 24"	FOOT	30	30					
70301000	WORK ZONE PAVEMENT MARKING REMOVAL	SO FT	695	695					
* 78004280	PREFORMED PLASTIC PAVEMENT MARKING, TYPE B - INLAID - LINE 24"	FOOT	30	30					
* 78009005	MODIFIED URETHANE PAVEMENT MARKING - LINE 5"	FOOT	1174	1174					
* 78009008	MODIFIED URETHANE PAVEMENT MARKING - LINE 8"	FOOT	105	105					
* 78009012	MODIFIED URETHANE PAVEMENT MARKING - LINE 12"	FOOT	51	51					
* 78200300	PRISMATIC CURB REFLECTOR	EACH	12	12					

* SPECIALTY ITEM

EARTH EXCAVATION / GRANULAR SUBBASE SCHEDULE

ITEM	UNIT	TOTAL
EARTH EXCAVATION	CU YD	50
SUBBASE GRANULAR MATERIAL, TYPE B	TON	10

ITEMS IN THIS SCHEDULE ARE ESTIMATED QUANTITIES TO BE USED FOR GROUND IMPROVEMENTS FOR PLACEMENT OF SUBBASE GRANULAR MATERIAL UNDER BASE COURSE, MEDIANS, CURB AND GUTTER, ETC., AS DIRECTED BY THE ENGINEER. IT MAY BE REDUCED, INCREASED, OR DELETED BY THE ENGINEER BASED ON ACTUAL FIELD CONDITIONS. NO WORK INVOLVING THESE ESTIMATED QUANTITIES SHALL BE PERFORMED WITHOUT THE DIRECTION AND APPROVAL OF THE ENGINEER.

EARTH EXCAVATION

20200100

STATION TO STATION	SIDE	CU YD
LOCK & DAM ROAD		
8+32.5	9+74.0	LT
8+64.0	9+74.0	RT
TOTAL		118.5
USE		120

INLET AND PIPE PROTECTION

28000500

STATION	SIDE	EACH
LOCK & DAM ROAD		
8+16.8	LT	1
TOTAL		1

PCC BASE COURSE WIDENING SCHEDULE

35400500 31101000

STATION TO STATION	SIDE	PCC BASE CSE WID 10"	SUBBASE GRANULAR MATERIAL TY B
		SQ YD	TON
FAP 502 (IL 57)			
93+18.5	93+37.7	LT & RT	8.5
LOCK & DAM ROAD			
8+32.6	9+74.0	LT	113.2
8+64.0	9+74.0	RT	106.6
9+58.7	9+74.0	RT	2.7
TOTALS			231.0
USE			90

MISCELLANEOUS PAVING ITEMS SCHEDULE

ITEM	UNIT	TOTAL
TEMPORARY RAMP	SO YD	264
BITUMINOUS MATERIALS (PRIME COAT)	TON	0.9
AGGREGATE (PRIME COAT)	TON	6
PROTECTIVE COAT	SO YD	324

THE SCHEDULE FOR MISCELLANEOUS PAVING ITEMS ARE ESTIMATED QUANTITIES. IT MAY BE REDUCED, INCREASED, OR DELETED BY THE ENGINEER BASED ON ACTUAL FIELD CONDITIONS. NO WORK INVOLVING THESE ESTIMATED QUANTITIES SHALL BE PERFORMED WITHOUT THE DIRECTION AND APPROVAL OF THE ENGINEER.

ROADWAY PAVING SCHEDULE

X4401198 40600635 40603315

LOCATION	SIDE	HMA SURFACE REMOVAL	LEVELING BINDER N70	HMA SURFACE COURSE MIX "C", N70
		SO YD	TON	
LOCK & DAM ROAD				
7+50.0	9+74.0	LT & RT	814.1	57.8
TOTALS			814.1	57.8
USE			815	58

SHOULDER PAVING SCHEDULE

X4401198 40600635 40603315

LOCATION	SIDE	HMA SURFACE REMOVAL	LEVELING BINDER N70	HMA SURFACE COURSE MIX "C", N70
		SO YD	TON	
LOCK & DAM ROAD				
7+50.0	8+14.6	LT	57.0	3.5
7+50.0	7+73.7	RT	8.8	0.5
TOTALS			65.8	3.9
USE			66	4

ENTRANCE SCHEDULE

42300600 40800050 X4401198

STATION	SIDE	TYPE	WIDTH	AREA (SQ YD)	PCC DRIVEWAY PVMT 10"	INCIDENTAL HMA SURFACING	HMA SURFACE REMOVAL
					SO YD	TON	SO YD
FAP 502 (IL 57)							
92+78.0	RT	CE	30	139.5	139.5		
LOCK & DAM ROAD							
8+05.0	RT	CE	VAR	51.8		7.3	51.8
TOTALS					139.5	7.3	51.8
USE					140	8	52

CLASS SI CONCRETE (OUTLET)

60600095

STATION TO STATION	SIDE	CU YD
LOCK & DAM ROAD		
8+40.0	8+64.1	LT
TOTAL		2.41
USE		2.5

CONCRETE CURB, TYPE B

60600605

STATION TO STATION	SIDE	FOOT
FAP 502 (IL 57)		
92+42.2	92+62.9	RT
92+93.1	93+09.7	RT
TOTAL		73.4
USE		74

CURB AND GUTTER, TYPE B-6.24

60605000

STATION TO STATION	SIDE	FOOT
FAP 502 (IL 57)		
92+32.7	92+97.2	RT
LOCK & DAM ROAD		
8+64.1	9+74.0	LT
8+74.0	9+74.0	RT
TOTAL		383.1
USE		384

CURB AND GUTTER, TYPE B-6.24 (VARIABLE WIDTH GUTTER FLAG)

60605500

STATION TO STATION	SIDE	FOOT
LOCK & DAM ROAD		
8+64.0	8+74.0	RT
TOTAL		9.9
USE		10

CURB AND GUTTER, TYPE M-6.06

60608600

STATION TO STATION	SIDE	FOOT
LOCK & DAM ROAD		
9+58.7	9+74.0	RT
TOTAL		10.9
USE		11

CURB AND GUTTER, TYPE M-6.12

60609200

STATION TO STATION	SIDE	FOOT
LOCK & DAM ROAD		
9+58.7	9+74.0	RT
TOTAL		27.9
USE		28

CONCRETE MEDIAN SURFACE, 4 INCH

60618300

STATION TO STATION	SIDE	SO FT
LOCK & DAM ROAD		
9+58.7	9+74.0	RT
TOTAL		62.5
USE		63

CONCRETE MEDIAN, TYPE SM-4.06

X6065701

STATION TO STATION	SIDE	SO FT
FAP 502 (IL 57)		
93+12.0	93+18.5	LT & RT
95+50.0	95+75.0	LT & RT
TOTAL		126.0
USE		126

PAVEMENT REMOVAL

44000100

STATION TO STATION	SIDE	SO YD
FAP 502 (IL 57)		
92+78.7 93+19.5	RT	7.5
LOCK & DAM ROAD		
9+58.7 9+74.0	RT	2.8
TOTAL		10.3
USE		11

FURNISHING AND ERECTING RIGHT OF WAY MARKERS

66600105

STATION	SIDE	OFFSET	EACH
FAP 502 (IL 57)			
94+09.53	RT	100.00	1
94+50.00	RT	60.00	1
TOTAL			2

ESTIMATED STRIPING QUANTITIES

PAY ITEM NUMBER	PAY ITEM	UNIT	QUANTITY	LOCATION/REASON
70103815	TRAFFIC CONTROL SURVEILLANCE	CAL DA	10	AS REQUIRED FOR DROP-OFFS
70300100	SHORT-TERM PAVEMENT MARKING	FOOT	72	TEMPORARY STRIPING ON BINDER/SURFACE
70300230	TEMPORAY PAVEMENT MARKING - LINE 5"	FOOT	1174	TEMPORARY STRIPING ON BINDER/SURFACE
70300250	TEMPORAY PAVEMENT MARKING - LINE 8"	FOOT	105	TEMPORARY STRIPING ON BINDER/SURFACE
70300260	TEMPORAY PAVEMENT MARKING - LINE 12"	FOOT	51	TEMPORARY STRIPING ON BINDER/SURFACE
70300280	TEMPORAY PAVEMENT MARKING - LINE 24"	FOOT	30	TEMPORARY STRIPING ON BINDER/SURFACE
70301000	WORK ZONE PAVEMENT MARKING REMOVAL	SO FT	695	REMOVE TEMPORARY STRIPING

DRIVEWAY PAVEMENT REMOVAL

44000200

STATION	SIDE	SO YD
FAP 502 (IL 57)		
92+78.0	RT	134.4
TOTAL		134.4
USE		135

PRISMATIC CURB REFLECTOR

78200300

STATION TO STATION	SIDE	MAXIMUM SPACING	EACH
FAP 502 (IL 57)			
93+18.5 93+18.5	LT & RT	N/A	3
LOCK & DAM ROAD			
9+58.7 9+74.0	RT	10	9
TOTAL			12

PREFORMED PLASTIC PAVEMENT MARKING
TYPE B - INLAID - LINE 24"

78004280

STATION TO STATION	SIDE	DESCRIPTION	WHITE	FOOT
LOCK & DAM ROAD				
9+50.4 9+64.2	RT	STOP BAR		18.0
9+64.4 9+64.4	RT	STOP BAR		12.0
TOTAL				30.0
USE				30

CURB REMOVAL

44000300

STATION TO STATION	SIDE	FOOT
FAP 502 (IL 57)		
92+41.4 92+57.4	RT	19.0
93+03.0 93+27.1	RT	26.0
TOTAL		45.0
USE		45

MODIFIED URETHANE PAVEMENT MARKING - LINE 5"

78009005

STATION TO STATION	SIDE	DESCRIPTION	WHITE	YELLOW
FAP 502 (IL 57)				
92+32.7 92+67.2	RT OS	EDGE LINE	64.5	
93+12.0 93+18.5	LT IS	EDGE LINE		8.5
93+12.0 93+18.5	RT IS	EDGE LINE		8.5
95+50.0 95+75.0	LT IS	EDGE LINE		50.0
95+50.0 95+75.0	RT IS	EDGE LINE		50.0
LOCK & DAM ROAD				
7+50.0 9+74.0	LT	EDGE LINE	252.0	
7+50.0 9+64.4	LT & RT	NO-PASSING		428.8
7+50.0 9+74.0	RT	EDGE LINE	311.0	
TOTALS			627.5	545.8
USE				1174

CURB AND GUTTER REMOVAL

44000500

STATION TO STATION	SIDE	FOOT
FAP 502 (IL 57)		
92+32.7 93+13.0	RT	80.4
94+72.6 95+13.7	RT	41.0
LOCK & DAM ROAD		
8+43.1 9+67.6	LT	150.5
8+65.8 9+73.8	RT	153.8
9+60.7 9+74.0	RT	39.3
TOTAL		465.0
USE		465

MODIFIED URETHANE PAVEMENT MARKING - LINE 8"

78009008

STATION TO STATION	SIDE	DESCRIPTION	WHITE	FOOT
LOCK & DAM ROAD				
9+44.8 9+74.0	RT	ISLAND		104.4
TOTAL				104.4
USE				105

MEDIAN REMOVAL

44003100

STATION TO STATION	SIDE	SO FT
FAP 502 (IL 57)		
93+12.0 93+37.7	LT & RT	102.6
95+50.0 95+75.0	LT & RT	100.0
TOTAL		202.6
USE		203

MODIFIED URETHANE PAVEMENT MARKING - LINE 12"

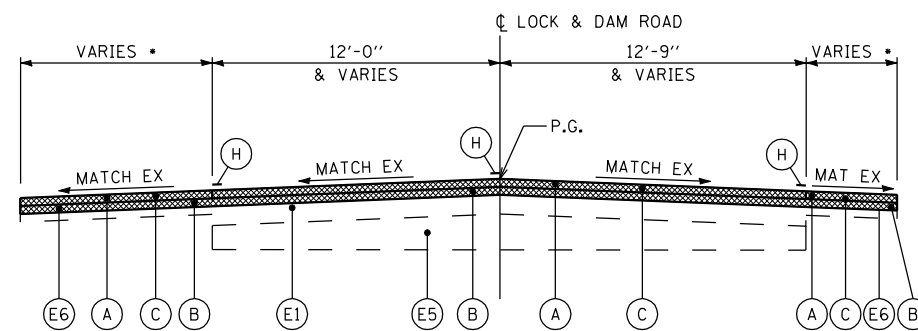
78009012

STATION TO STATION	SIDE	DESCRIPTION	WHITE	FOOT
LOCK & DAM ROAD				
9+44.8 9+74.0	RT	ISLAND		50.1
TOTAL				50.1
USE				51

MEDIAN SURFACE REMOVAL

X4403800

STATION TO STATION	SIDE	SO FT
LOCK & DAM ROAD		
9+58.7 9+74.0	RT	71.6
TOTAL		71.6
USE		72



TYPICAL LOCK & DAM ROAD SECTION

NOTES:

* - SEE PLAN SHEETS

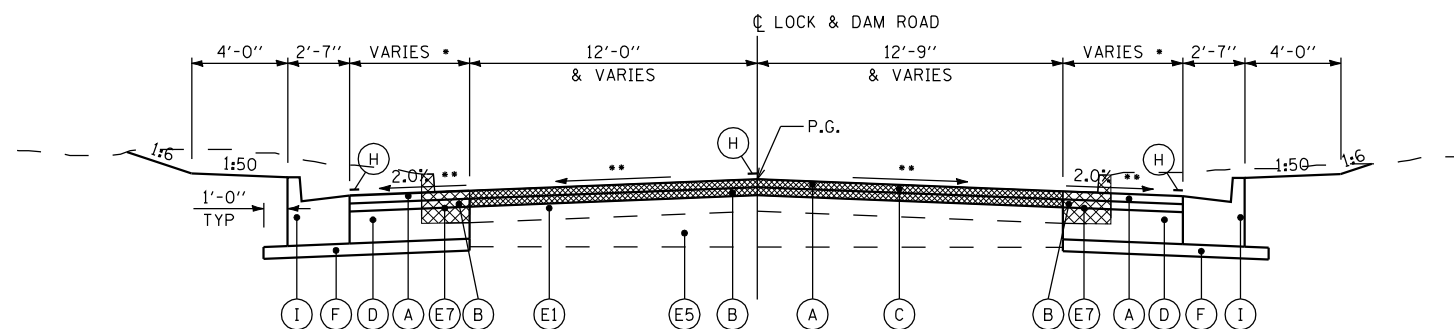
STA 7+50.00 TO STA 8+40.00 LT
 STA 7+50.00 TO STA 8+64.00 RT

EXISTING LEGEND

- (E1) EXISTING HMA PAVEMENT
- (E2) EXISTING PCC PAVEMENT, 8"
- (E3) EXISTING HMA BSE CSE, 9"
- (E4) EXISTING HMA SURFACING, 3 1/2"
- (E5) EXISTING SUB-BASE GRANULAR MATERIAL
- (E6) EXISTING HMA SHOULDER 6" / EXISTING ENTRANCE PAVEMENT
- (E7) EXISTING CONCRETE CURB & GUTTER, TYPE B-6.24
- (E8) EXISTING SOLID CONCRETE MEDIAN
- [Hatched Box] EXISTING ITEM TO BE REMOVED

PROPOSED LEGEND

- (A) PR HMA SURFACE COURSE, 1 1/2"
- (B) PR HMA LEVELING BINDER, 1"
- (C) PR HMA SURFACE REMOVAL, 2 1/2" (PAID AS VARIABLE DEPTH)
- (D) PR PCC BASE COURSE WIDENING, 10"
- (F) PR SUBBASE GRANULAR MATERIAL, TYPE B, 4"
- (H) PR PAVEMENT MARKING (SEE PLAN SHEETS)
- (I) PR COMBINATION CONCRETE CURB & GUTTER, TYPE B-6.24

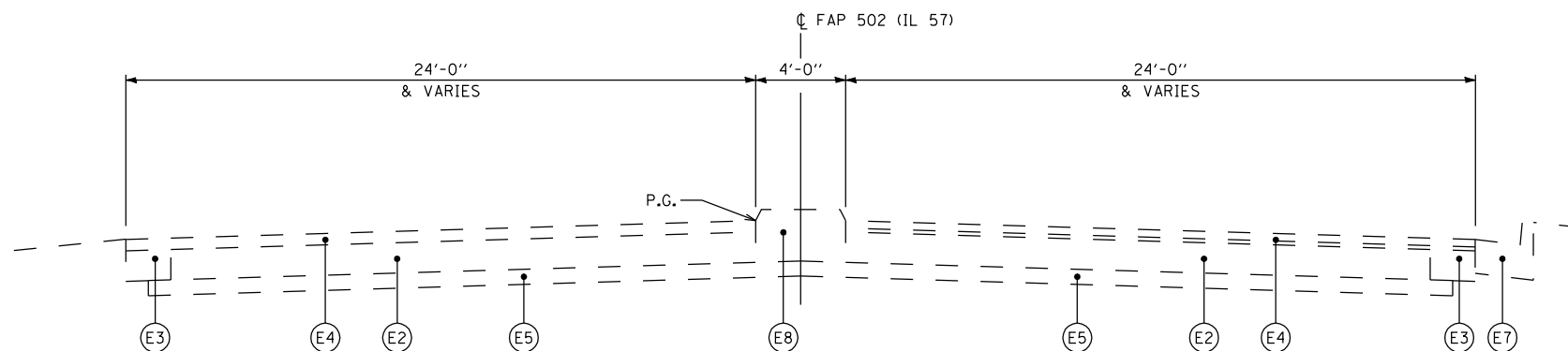


TYPICAL LOCK & DAM ROAD SECTION

NOTES:

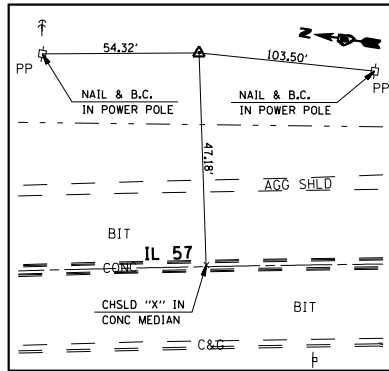
* - SEE PLAN SHEETS
 ** - VARIES (SEE GEOMETRIC DETAIL SHEET AND CROSS SECTION SHEETS)

STA 8+40.00 TO STA 9+74.00 LT
 STA 8+64.00 TO STA 9+74.00 RT



TYPICAL FAP 502 (IL 57) SECTION

FILE NAME =	USER NAME = ebb	DESIGNED -	REVISED -	STATE OF ILLINOIS DEPARTMENT OF TRANSPORTATION	TYPICAL SECTIONS			F.A.P. RTE.	SECTION	COUNTY	TOTAL SHEETS	SHEET NO.
qr\08files\080224\wo 3 - il 57 and ld road\cadd sheets\D672F46-sht-Typical.dgn		DRAWN -	REVISED -					502	(53) N-1	ADAMS	20	9
		CHECKED -	REVISED -		SCALE: none SHEET NO. 1 OF 1 SHEETS STA. TO STA.			CONTRACT NO. 72F46				
		DATE -	REVISED -		FED. ROAD DIST. NO. 6 ILLINOIS FED. AID PROJECT							

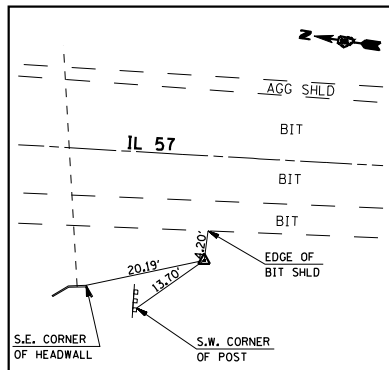


BM #44B: STA. 88+56.00, 50.40' LT
CHISLED "a" ON SOUTH HEADWALL
UNDER ENTRANCE E OF IL 57
ELEV. = 487.22

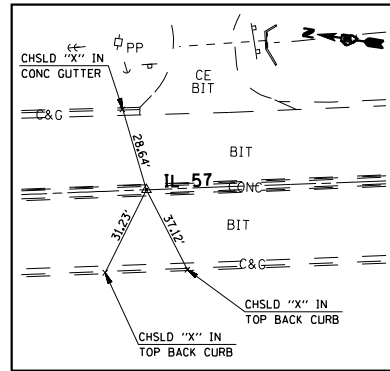
BM #44: STA. 98+42.50, 3.95' RT
CHISLED "X" TIP OF CONC MEDIAN
465' ± S OF LOCK & DAM ROAD
ELEV. = 495.29

BM #44A: STA. 99+76.60, 34.19' LT
CHISLED "a" ON EAST HEADWALL
ELEV. = 487.22

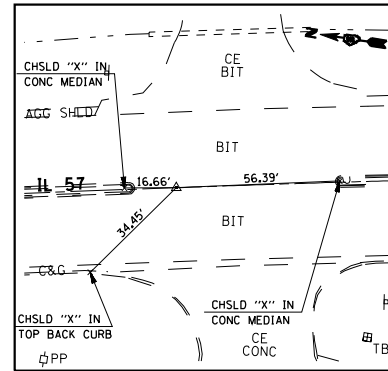
TRAV#100 STA. 91+80.80, 74.24' LT.
(*4 REBAR WITH CAP BURIED 4")
N 1,182,518.379 E 1,948,165.251



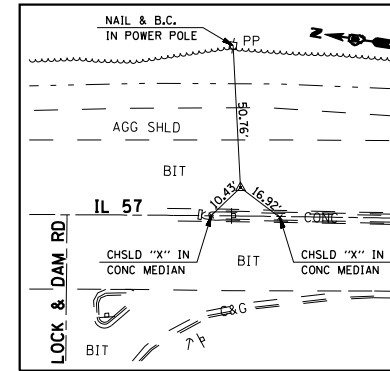
TRAV#101 STA. 100+64.98, 29.11' RT.
(*4 REBAR WITH CAP BURIED 3")
N 1,181,625.804 E 1,948,171.087



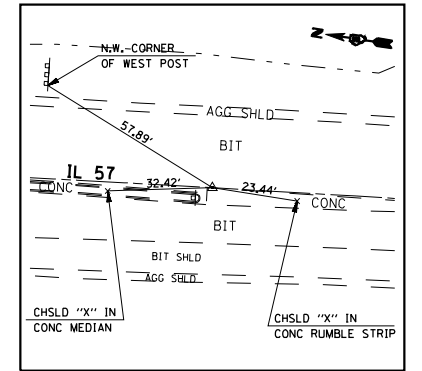
P.T. STA. 88+12.52
(SET STAR DRILLED IN CHSLD "X")



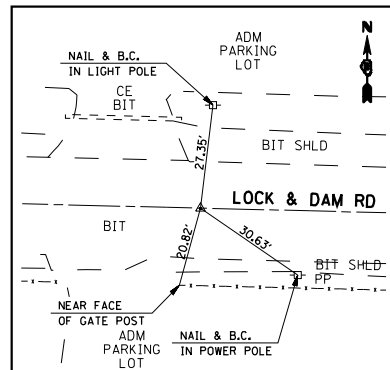
P.C. STA. 90+23.72
(SET P.K. NAIL IN CHSLD "X")



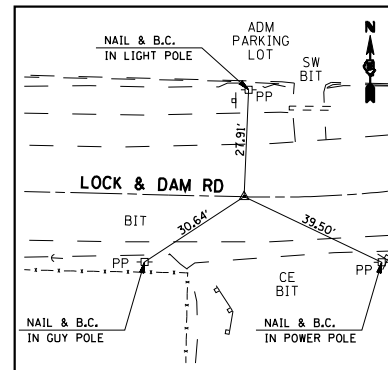
P.I. STA. 94+37.62
(SET P.K. NAIL IN CHSLD "X")



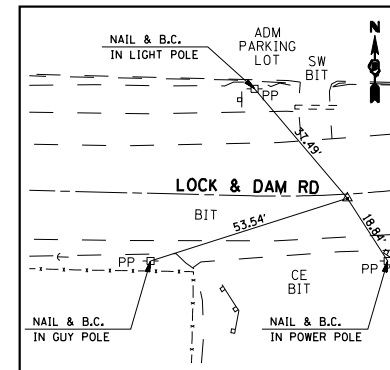
P.T. STA. 98+50.90
(SET P.K. NAIL IN CHSLD "X")



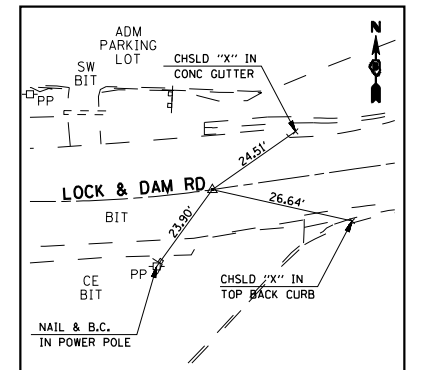
P.O.T. STA. 6+25.57
(SET P.K. NAIL IN CHSLD "X")



P.C. STA. 7+92.52
(SET P.K. NAIL IN CHSLD "X")



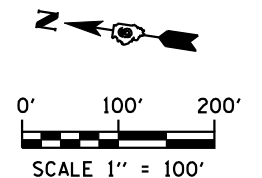
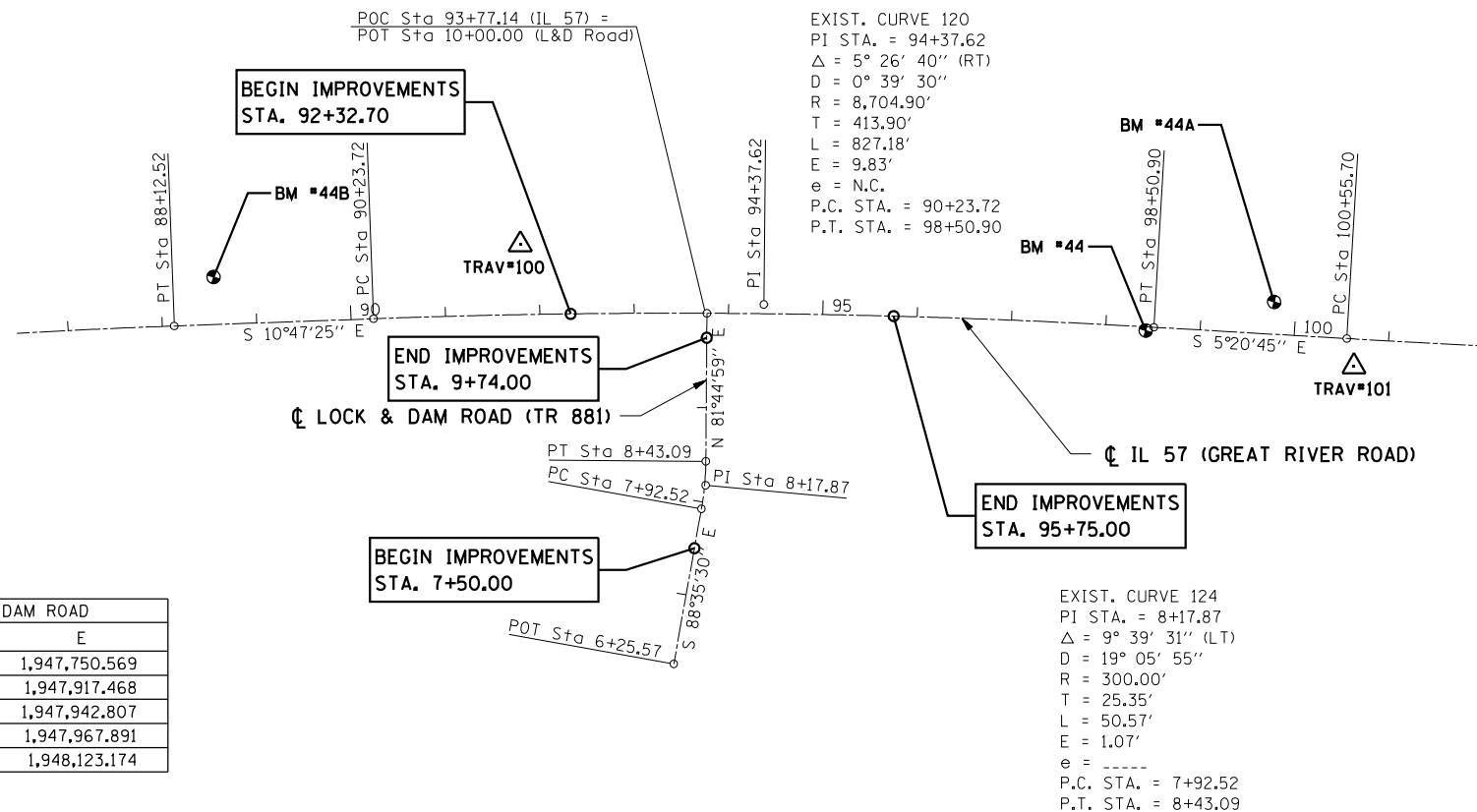
P.I. STA. 8+17.87
(SET P.K. NAIL IN CHSLD "X")



P.T. STA. 8+43.09
(SET P.K. NAIL IN CHSLD "X")

ALIGNMENT COORDINATES - IL 57			
	STATION	N	E
PT	88+12.52	1,183,875.200	1,947,768.201
PC	90+23.72	1,182,660.362	1,948,064.073
POT	93+77.14	1,182,311.941	1,948,123.174
PI	94+37.62	1,182,253.780	1,948,141.561
PT	98+50.90	1,181,841.681	1,948,180.123
PC	100+55.70	1,181,637.771	1,948,199.204

ALIGNMENT COORDINATES - LOCK & DAM ROAD			
	STATION	N	E
POT	6+25.57	1,182,290.514	1,947,750.569
PC	7+92.52	1,182,286.411	1,947,917.468
PI	8+17.87	1,182,285.788	1,947,942.807
PT	8+43.09	1,182,289.425	1,947,967.891
POT	10+00.00	1,182,311.941	1,948,123.174



GARDNER DENVER MACHINERY, INC.

JOSEPH A. & NORMA J. THOMAS

EXIST. CURVE 120
 PI STA. = 94+37.62
 $\Delta = 5^\circ 26' 40''$ (RT)
 $D = 0^\circ 39' 30''$
 $R = 8,704.90'$
 $T = 413.90'$
 $L = 827.18'$
 $E = 9.83'$
 $e = N.C.$
 P.C. STA. = 90+23.72
 P.T. STA. = 98+50.90

POC STA 93+77.14 (IL 57) =
 POT STA 10+00.00 (LOCK & DAM ROAD)

END IMPROVEMENT
 LOCK & DAM ROAD
 STA 9+74.00

END IMPROVEMENT
 IL 57
 STA 95+75.00

BEGIN IMPROVEMENT
 IL 57
 STA 92+32.70

SEE SHEET 13
 FOR GEOMETRIC DETAIL

D— EX C&G / PVMT / MEDIAN SURFACE REMOVAL
 PR EARTH EXCAVATION
 PR SUBBASE GRANULAR MATERIAL, TY B, 4"
 PR PCC BASE CSE WID, 10"
 PR HMA SURFACING, 2 1/2"
 PR CONC MEDIAN SURFACE, 4"
 PR CONC C&G M-6.06 / M-6.12
 (SEE GEOMETRIC SHEET FOR DETAILS)

E— EX MEDIAN REMOVAL
 PR EARTH EXCAVATION
 PR SUBBASE GRANULAR MATERIAL, TY B, 4"
 PR SOLID CONC MEDIAN, TY SM-4.06

F— PR C&G REMOVAL

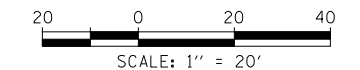
G— STA 9+32.4, 31.4' RT
 WATER METER PIT TO BE MOVED BY OTHERS

H— STA 9+47.0, 44.9' RT
 RELOCATE EX STOP SIGN

I— STA 9+67.7, 16.1' RT
 RELOCATE EX STOP SIGN

PAVEMENT MARKING LEGEND

- ① PR MODIFIED URETHANE PAVEMENT MARKING, LINE 5" (DOUBLE SOLID YELLOW)
- ② PR MODIFIED URETHANE PAVEMENT MARKING, LINE 5" (SOLID WHITE)
- ④ PR MODIFIED URETHANE PAVEMENT MARKING, LINE 8" (SOLID WHITE EDGE LINE)
- ⑤ PR MODIFIED URETHANE PAVEMENT MARKING, LINE 12" (SOLID WHITE DIAGONAL) (8' TYP SPACING)
- ⑥ PR PREFORMED PLASTIC PAVEMENT MARKING, TYPE B (INLAID), LINE 24" (SOLID WHITE)



FILE NAME =	USER NAME = ebb	DESIGNED -	REVISED -
Q:\08files\080224\03 - IL 57 and LD Road\CADD Sheets\0672F46-sht-Plan02.dgn		DRAWN -	REVISED -
		CHECKED -	REVISED -
		DATE -	REVISED -

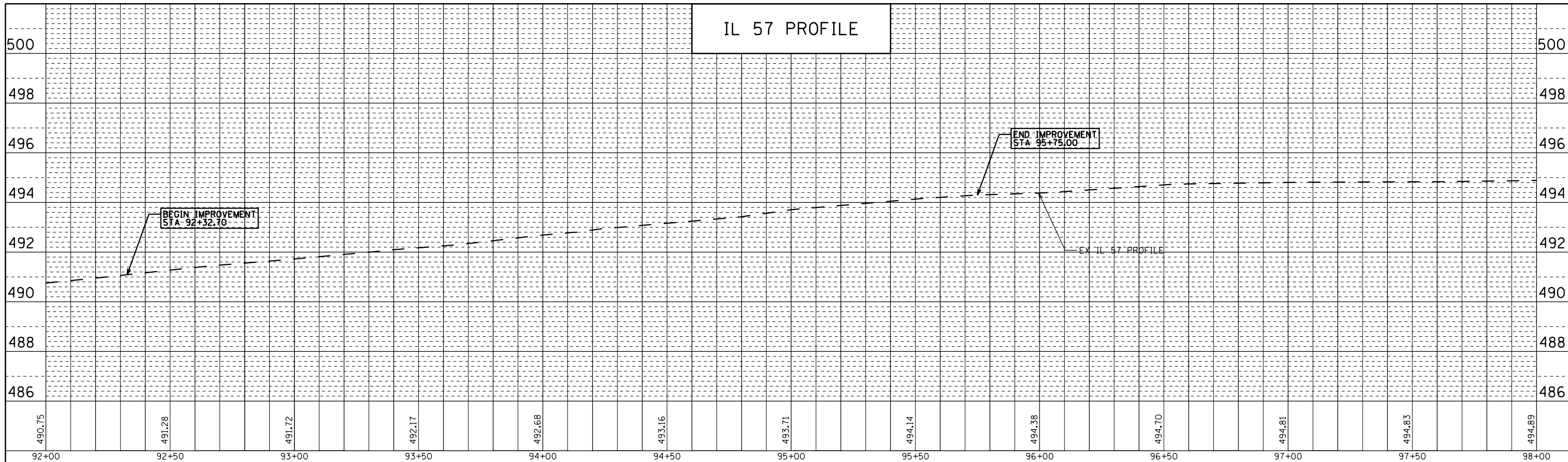
STATE OF ILLINOIS
 DEPARTMENT OF TRANSPORTATION

PLAN SHEET

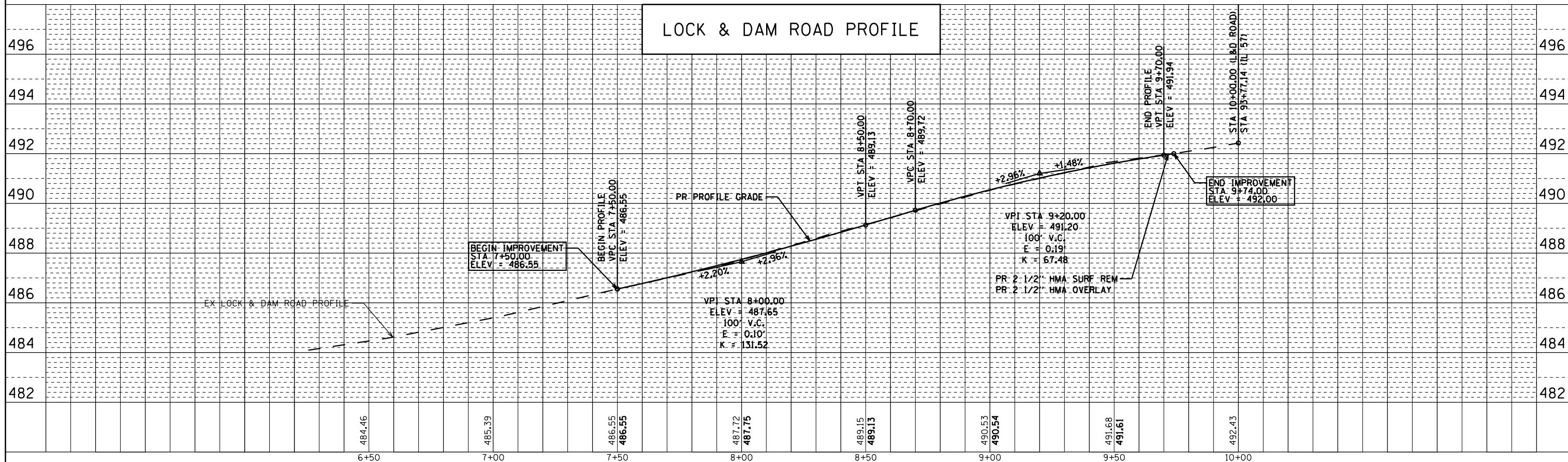
SCALE: 1"=20' SHEET NO. 1 OF 2 SHEETS STA. 92+00 TO STA. 98+00

F.A.P. RTE.	SECTION	COUNTY	TOTAL SHEETS	SHEET NO.
502	(53) N-1	ADAMS	20	11
CONTRACT NO. 72F46				
FED. ROAD DIST. NO. 6 ILLINOIS FED. AID PROJECT				

PLAN	SURVEYED	BY	DATE
NOTE BOOK NO.	PLOTTED		
	GRADES CHECKED		
	ALIGNMENT CHECKED		
	STRUCTURE NOTATION		
	CADD FILE NAME		

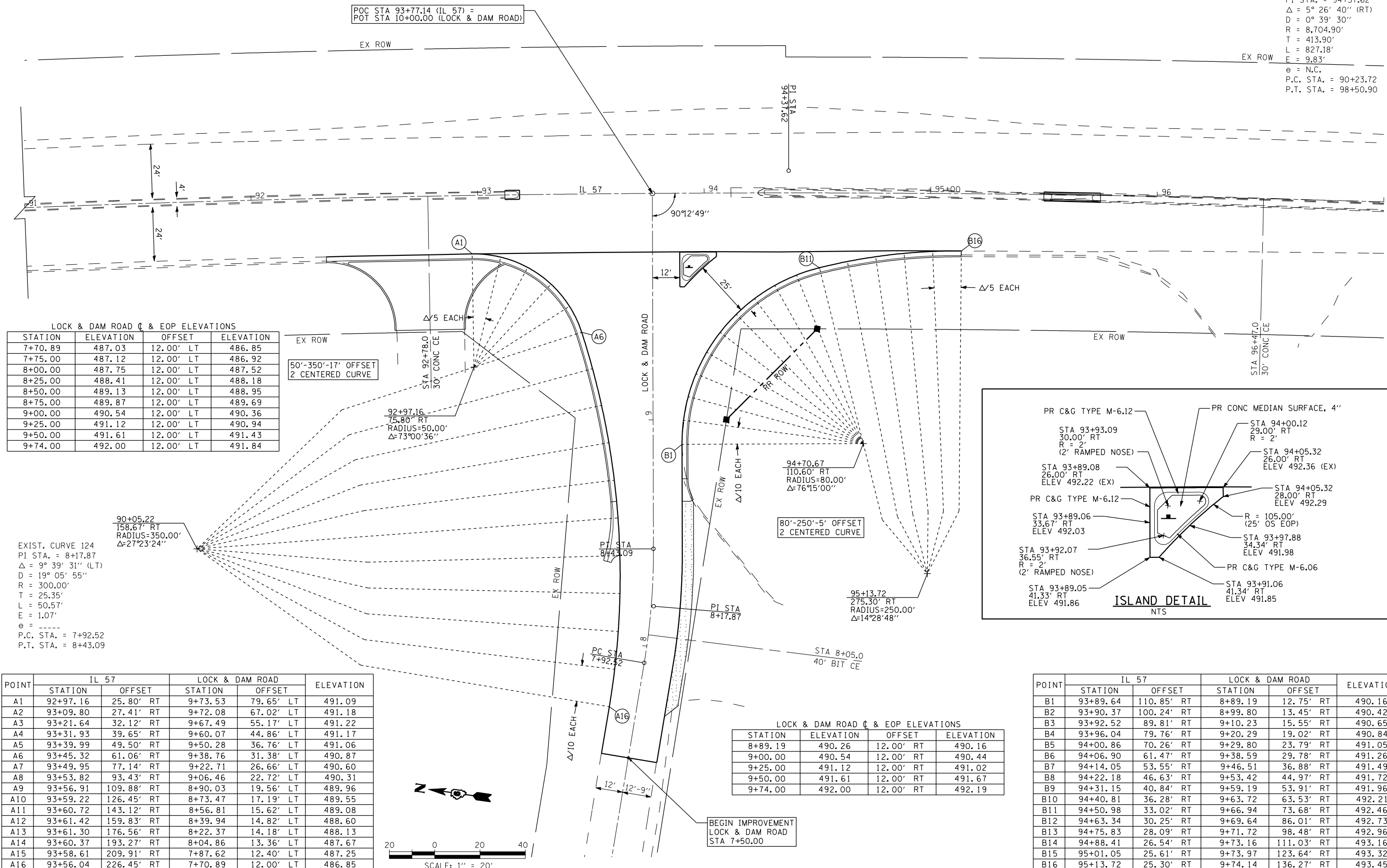


PROFILE	SURVEYED	BY	DATE
NOTE BOOK NO.	PLOTTED		
	GRADES CHECKED		
	STRUCTURE NOTATION		
	CADD FILE NAME		



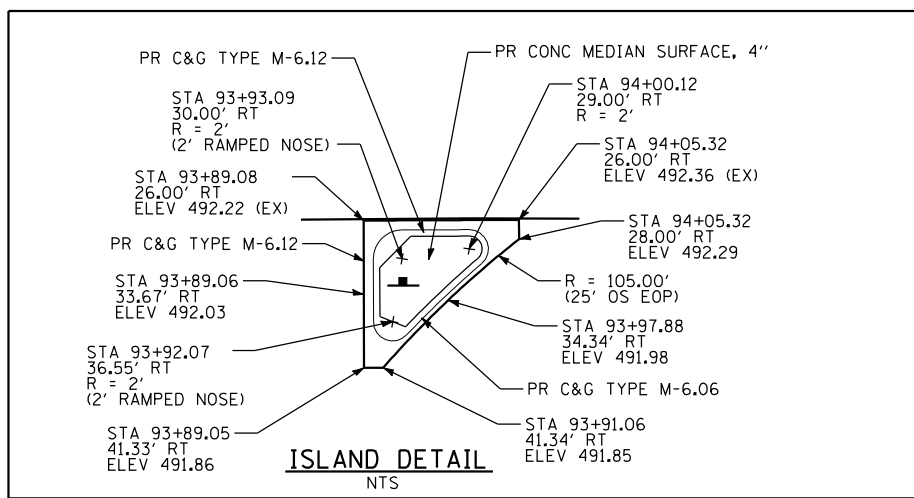
FILE NAME =	USER NAME = ebb	DESIGNED -	REVISED -	STATE OF ILLINOIS DEPARTMENT OF TRANSPORTATION	PROFILE SHEET			F.A.P. RTE.	SECTION	COUNTY	TOTAL SHEETS	SHEET NO.
q:\08files\080224\wo 3 - il 57 and ld road\cadd sheets\0672F46-sht-Plan03.dgn		DRAWN -	REVISED -		SCALE: 1"=20'	SHEET 2 OF 2 SHEETS	STA. 92+00 TO STA. 98+00	502	(53) N-1	ADAMS	20	12
		CHECKED -	REVISED -		CONTRACT NO. 72F46							
SHT_DOUBLE PROFILE	PLOT DATE = 12/12/2012	DATE -	REVISED -		ILLINOIS FED. AID PROJECT							

EXIST. CURVE 120
 PI STA. = 94+37.62
 $\Delta = 5^{\circ} 26' 40''$ (RT)
 $D = 0^{\circ} 39' 30''$
 $R = 8,704.90'$
 $T = 413.90'$
 $L = 827.18'$
 $E = 9.83'$
 $e = N.C.$
 P.C. STA. = 90+23.72
 P.T. STA. = 98+50.90



LOCK & DAM ROAD C & EOP ELEVATIONS

STATION	ELEVATION	OFFSET	ELEVATION
7+70.89	487.03	12.00' LT	486.85
7+75.00	487.12	12.00' LT	486.92
8+00.00	487.75	12.00' LT	487.52
8+25.00	488.41	12.00' LT	488.18
8+50.00	489.13	12.00' LT	488.95
8+75.00	489.87	12.00' LT	489.69
9+00.00	490.54	12.00' LT	490.36
9+25.00	491.12	12.00' LT	490.94
9+50.00	491.61	12.00' LT	491.43
9+74.00	492.00	12.00' LT	491.84



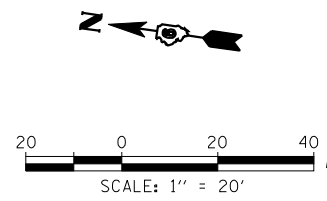
EXIST. CURVE 124
 PI STA. = 8+17.87
 $\Delta = 9^{\circ} 39' 31''$ (LT)
 $D = 19^{\circ} 05' 55''$
 $R = 300.00'$
 $T = 25.35'$
 $L = 50.57'$
 $E = 1.07'$
 $e =$
 P.C. STA. = 7+92.52
 P.T. STA. = 8+43.09

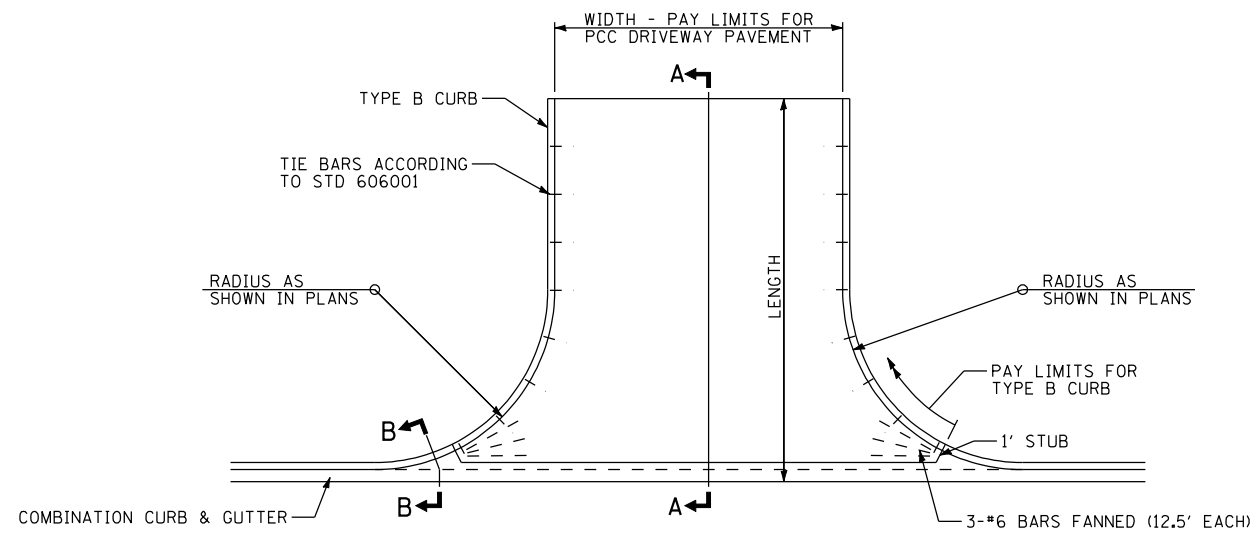
POINT	IL 57		LOCK & DAM ROAD		ELEVATION
	STATION	OFFSET	STATION	OFFSET	
A1	92+97.16	25.80' RT	9+73.53	79.65' LT	491.09
A2	93+09.80	27.41' RT	9+72.08	67.02' LT	491.18
A3	93+21.64	32.12' RT	9+67.49	55.17' LT	491.22
A4	93+31.93	39.65' RT	9+60.07	44.86' LT	491.17
A5	93+39.99	49.50' RT	9+50.28	36.76' LT	491.06
A6	93+45.32	61.06' RT	9+38.76	31.38' LT	490.87
A7	93+49.95	77.14' RT	9+22.71	26.66' LT	490.60
A8	93+53.82	93.43' RT	9+06.46	22.72' LT	490.31
A9	93+56.91	109.88' RT	8+90.03	19.56' LT	489.96
A10	93+59.22	126.45' RT	8+73.47	17.19' LT	489.55
A11	93+60.72	143.12' RT	8+56.81	15.62' LT	489.08
A12	93+61.42	159.83' RT	8+39.94	14.82' LT	488.60
A13	93+61.30	176.56' RT	8+22.37	14.18' LT	488.13
A14	93+60.37	193.27' RT	8+04.86	13.36' LT	487.67
A15	93+58.61	209.91' RT	7+87.62	12.40' LT	487.25
A16	93+56.04	226.45' RT	7+70.89	12.00' LT	486.85

LOCK & DAM ROAD C & EOP ELEVATIONS

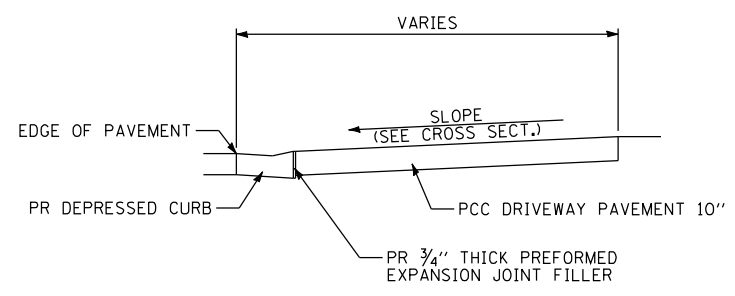
STATION	ELEVATION	OFFSET	ELEVATION
8+89.19	490.26	12.00' RT	490.16
9+00.00	490.54	12.00' RT	490.44
9+25.00	491.12	12.00' RT	491.02
9+50.00	491.61	12.00' RT	491.67
9+74.00	492.00	12.00' RT	492.19

POINT	IL 57		LOCK & DAM ROAD		ELEVATION
	STATION	OFFSET	STATION	OFFSET	
B1	93+89.64	110.85' RT	8+89.19	12.75' RT	490.16
B2	93+90.37	100.24' RT	8+99.80	13.45' RT	490.42
B3	93+92.52	89.81' RT	9+10.23	15.55' RT	490.65
B4	93+96.04	79.76' RT	9+20.29	19.02' RT	490.84
B5	94+00.86	70.26' RT	9+29.80	23.79' RT	491.05
B6	94+06.90	61.47' RT	9+38.59	29.78' RT	491.26
B7	94+14.05	53.55' RT	9+46.51	36.88' RT	491.49
B8	94+22.18	46.63' RT	9+53.42	44.97' RT	491.72
B9	94+31.15	40.84' RT	9+59.19	53.91' RT	491.96
B10	94+40.81	36.28' RT	9+63.72	63.53' RT	492.21
B11	94+50.98	33.02' RT	9+66.94	73.68' RT	492.46
B12	94+63.34	30.25' RT	9+69.64	86.01' RT	492.73
B13	94+75.83	28.09' RT	9+71.72	98.48' RT	492.96
B14	94+88.41	26.54' RT	9+73.16	111.03' RT	493.16
B15	95+01.05	25.61' RT	9+73.97	123.64' RT	493.32
B16	95+13.72	25.30' RT	9+74.14	136.27' RT	493.45

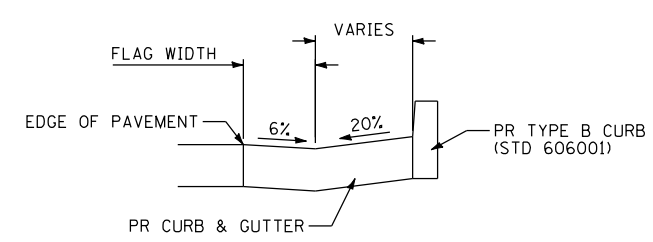




PLAN



SECTION A-A

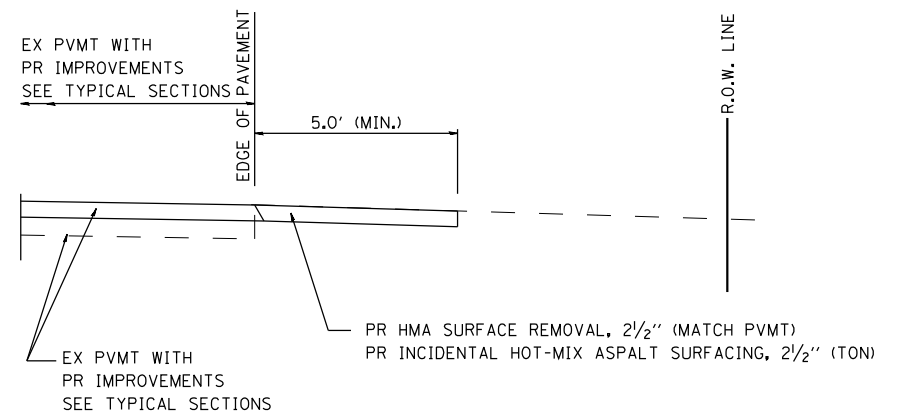
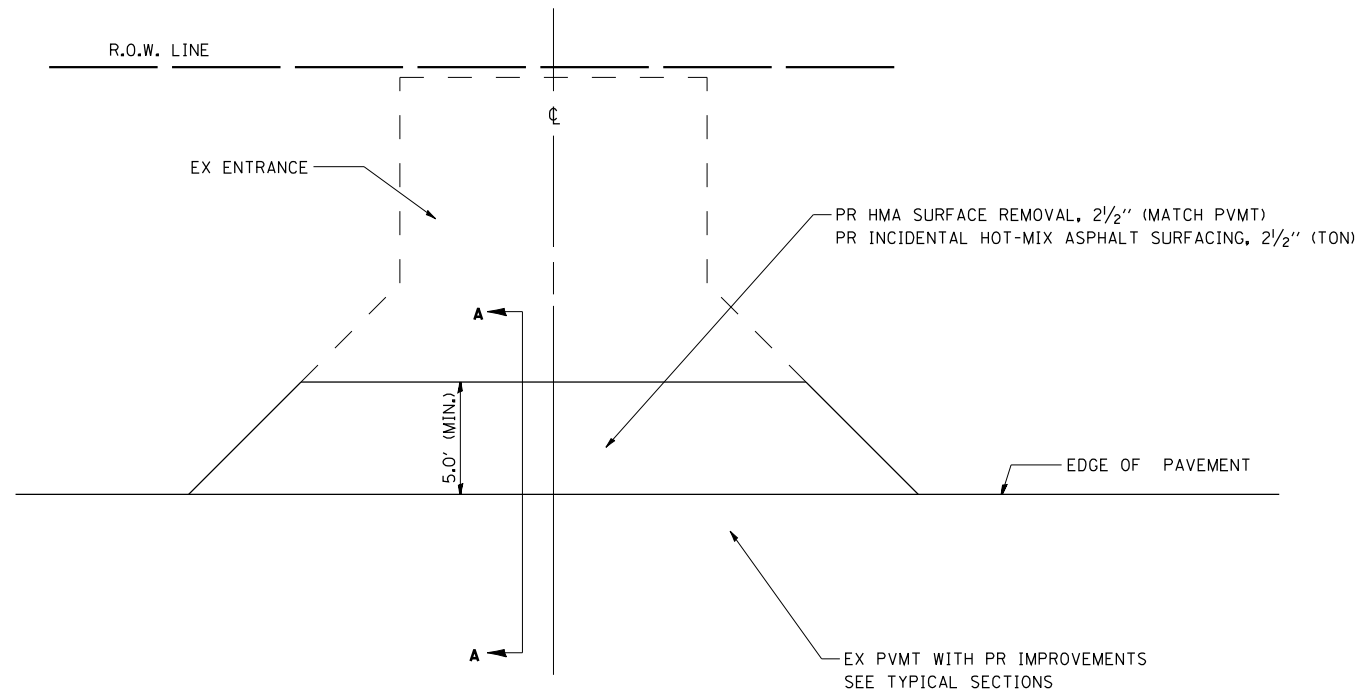


SECTION B-B

ENTRANCE DETAIL

NOT TO SCALE

NOTE: THE COST OF FURNISHING AND INSTALLING THE 3/4" PREFORMED EXPANSION JOINT AND REINFORCEMENT BARS SHALL BE INCLUDED IN THE COST OF THE PCC DRIVEWAY PAVEMENT



SECTION A-A FOR EX HOT-MIX ASPHALT

GENERAL NOTES:

THE RESIDENT ENGINEER WILL DETERMINE THE EXACT TYPE OF IMPROVEMENT TO BE COMPLETED FOR ALL ENTRANCES ON THIS PROJECT.

THE PLAN DETAILS AND SCHEDULES SHOULD BE USED AS A GUIDE FOR THE ENGINEER TO IMPLEMENT THE FINAL DESIGN.

HOT-MIX ASPHALT REQUIRED TO CONSTRUCT THE ENTRANCES SHALL BE IN ACCORDANCE WITH THE APPLICABLE PORTIONS OF SECTION 406 AND 408 OF THE STANDARD SPECIFICATIONS AND AS DIRECTED BY THE ENGINEER.

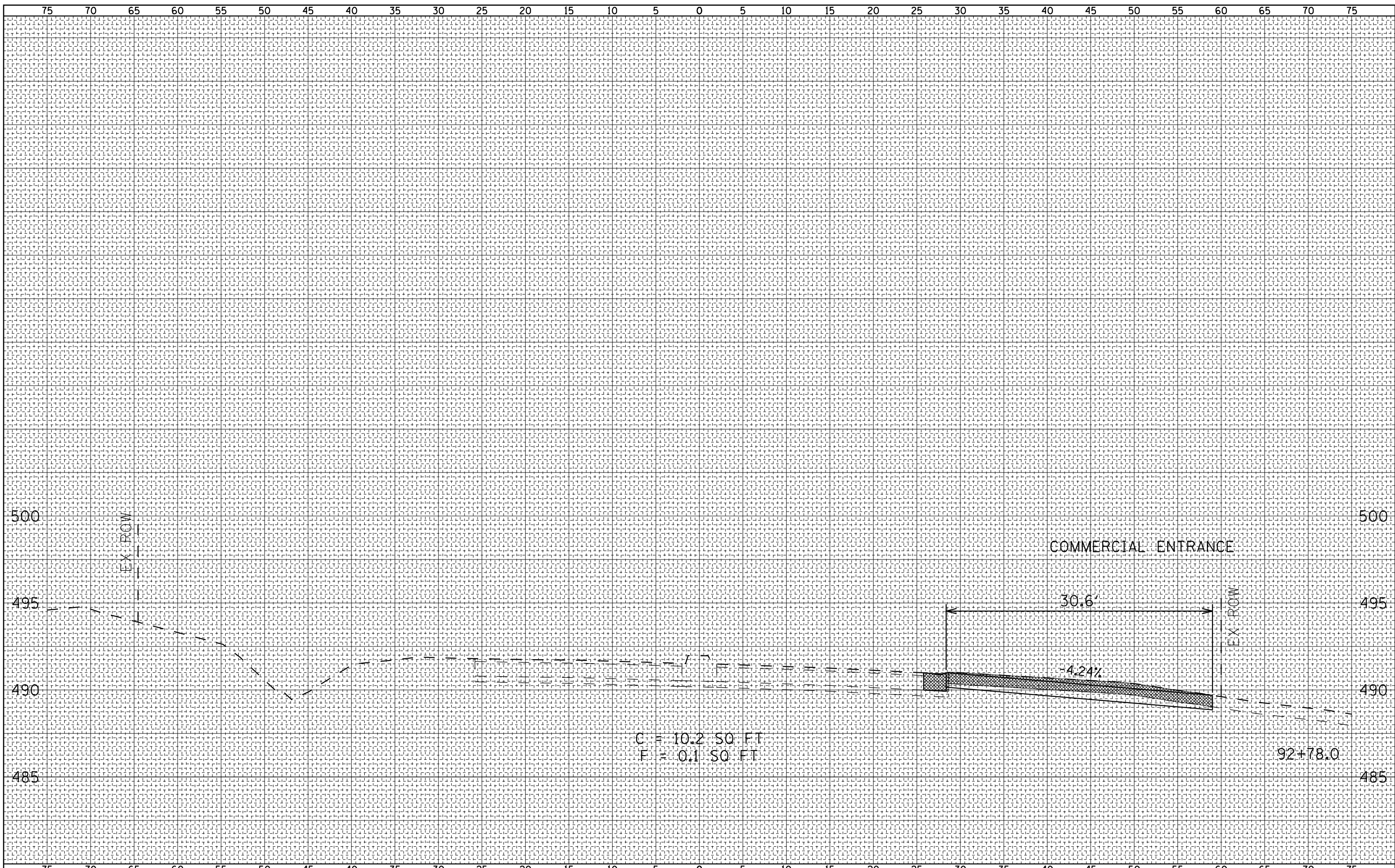
FILE NAME =	USER NAME = ebb	DESIGNED -	REVISED -
qr:\08files\080224\wo 3 - il 57 and 1d road\cadd sheets\0672F46-sht-Details.dgn		DRAWN -	REVISED -
		CHECKED -	REVISED -
		DATE -	REVISED -

**STATE OF ILLINOIS
DEPARTMENT OF TRANSPORTATION**

ENTRANCE DETAILS

SCALE: none SHEET NO. 1 OF 1 SHEETS STA. TO STA.

F.A.P. RTE.	SECTION	COUNTY	TOTAL SHEETS	SHEET NO.
502	(53) N-1	ADAMS	20	14
CONTRACT NO. 72F46				
FED. ROAD DIST. NO. 6 ILLINOIS FED. AID PROJECT				



BY	DATE

BY	DATE

FILE NAME =
 q:\08files\080224\wo 3 - il 57 and 1d road\cadd sheets\0672f46-sht-xsht-A001.dgn

USER NAME = ebb
 PLOT SCALE = 10.0000 " / IN.
 PLOT DATE = 12/12/2012

DESIGNED -
 DRAWN -
 CHECKED -
 DATE -

REVISED -
 REVISED -
 REVISED -
 REVISED -

**STATE OF ILLINOIS
 DEPARTMENT OF TRANSPORTATION**

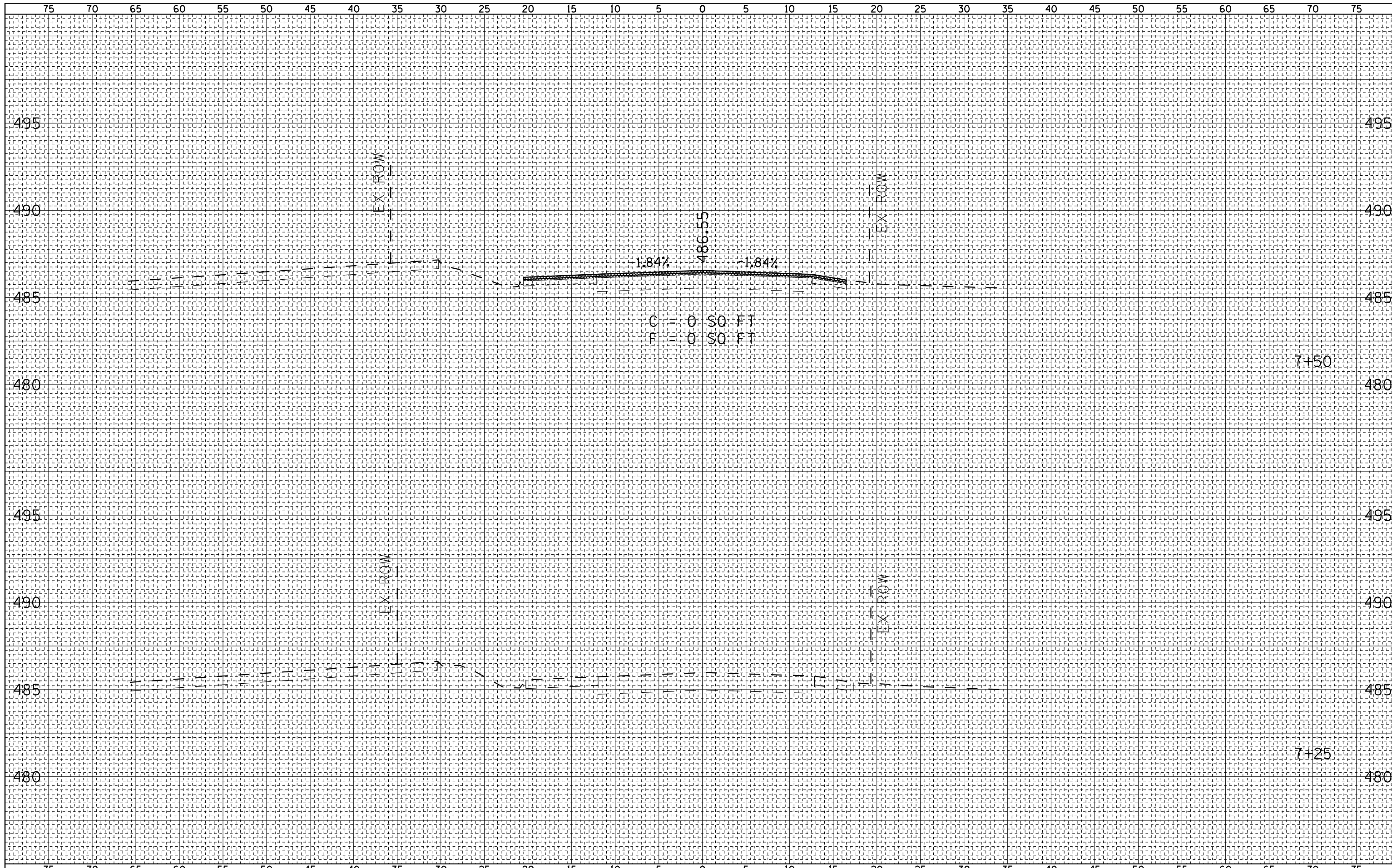
**FAP 502 (IL 57)
 CROSS SECTIONS**

SCALE: 1" = 25' H
 1" = 25' V

SHEET NO. 1 OF 1 SHEETS

STA. 92+78 TO STA. 92+78

F.A.P. RTE.	SECTION	COUNTY	TOTAL SHEETS	SHEET NO.
502	(53) N-1	ADAMS	20	15
CONTRACT NO. 72F46				
FED. ROAD DIST. NO. 6 ILLINOIS FED. AID PROJECT				



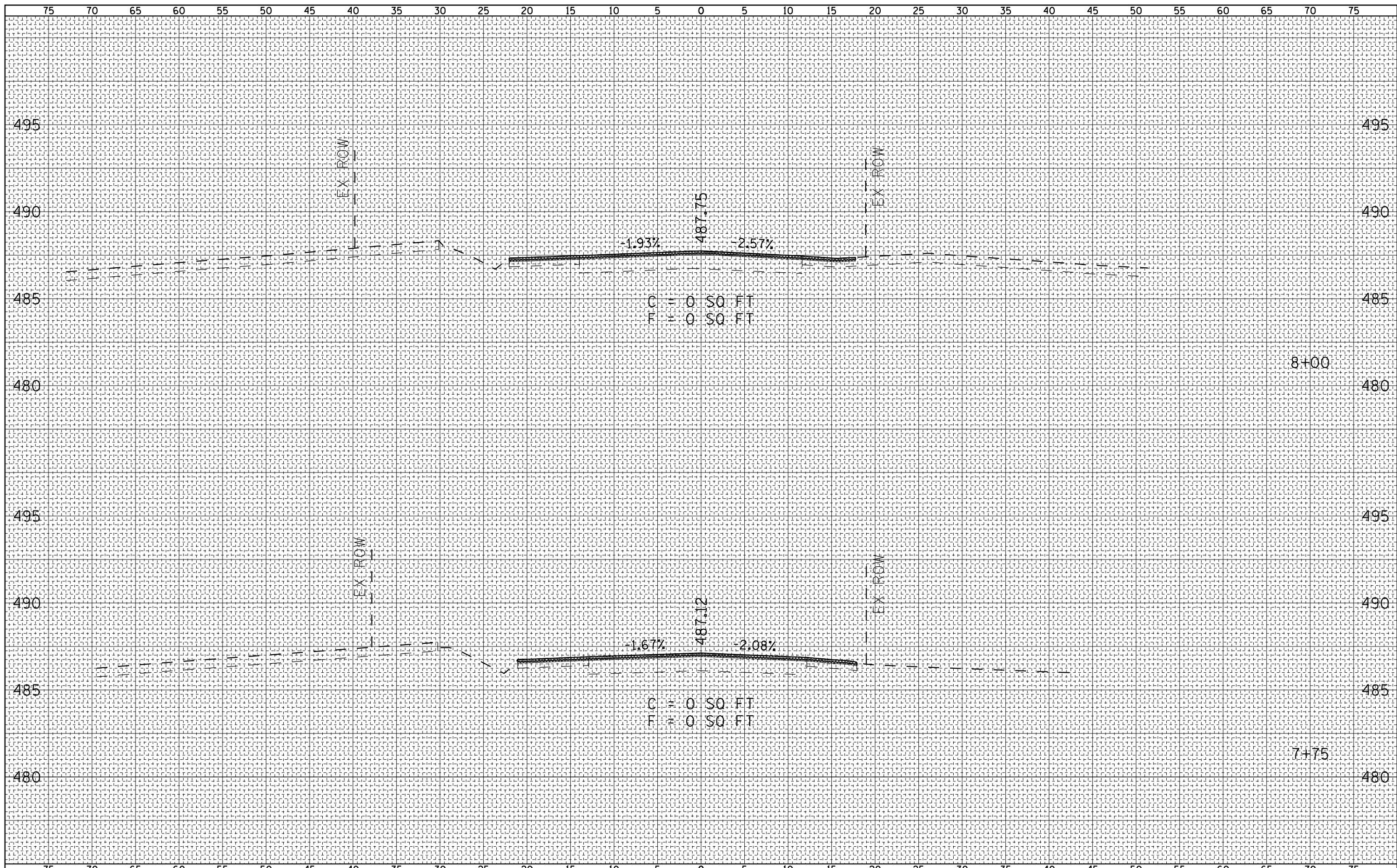
BY	DATE	SURVEYED	PLOTTED
FINAL SURVEY NOTE BOOK NO.		TEMPLATE AREAS CHECKED	

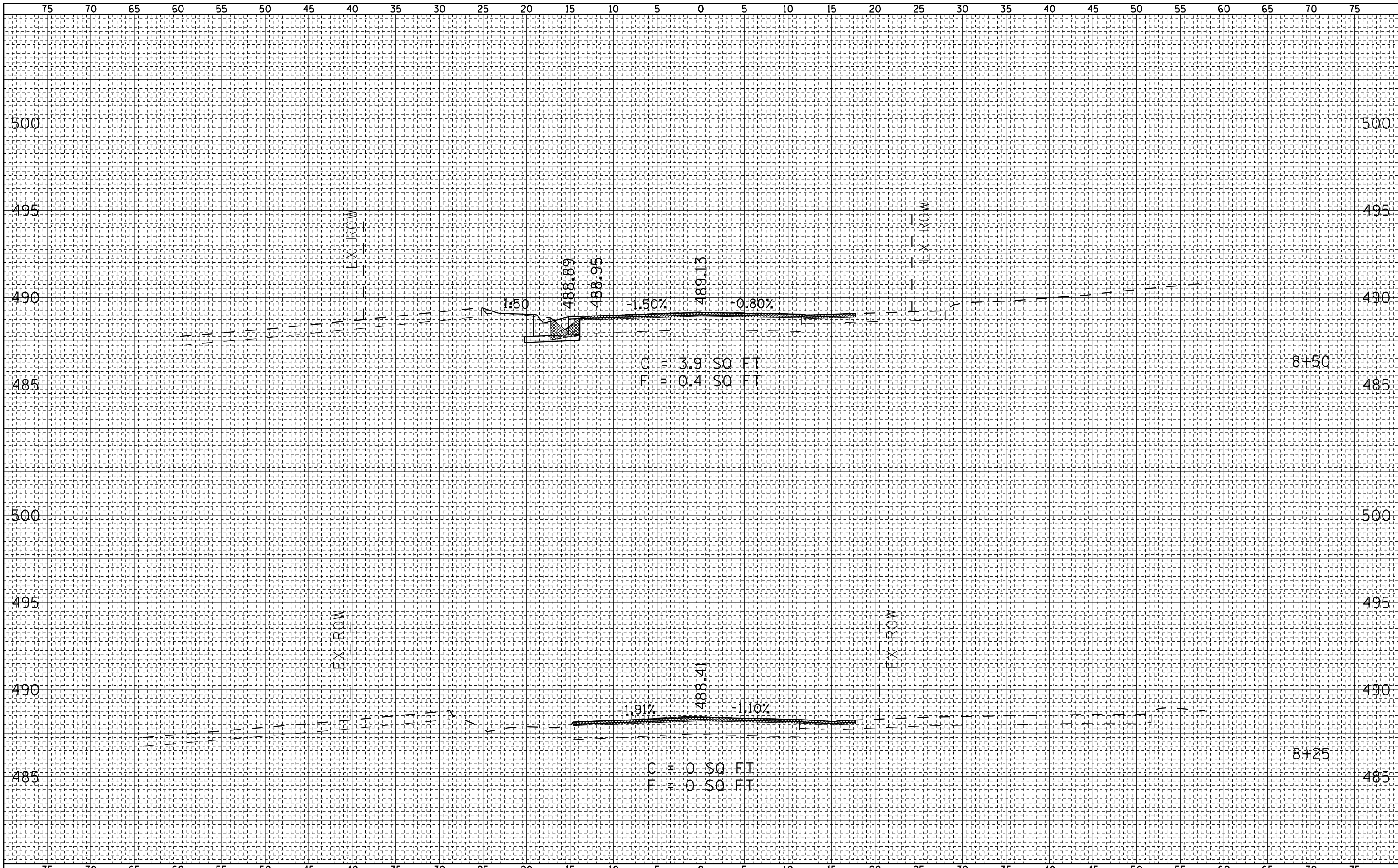
BY	DATE	SURVEYED	PLOTTED
ORIGINAL SURVEY NOTE BOOK NO.		TEMPLATE AREAS CHECKED	

FILE NAME =	USER NAME = ebb	DESIGNED -	REVISD -	STATE OF ILLINOIS DEPARTMENT OF TRANSPORTATION			LOCK & DAM ROAD CROSS SECTIONS				
q:\08files\080224\wo 3 - il 57 and 1d road\cadd sheets\0672f46-sht-ssht-5001.dgn		DRAWN -	REVISD -				F.A.P. RTE. 502	SECTION (53) N-1	COUNTY ADAMS	TOTAL SHEETS 20	SHEET NO. 16
		CHECKED -	REVISD -				SCALE: 1"=25'H 1"=32.5'V SHEET NO. 1 OF 5 SHEETS STA. 7+25 TO STA. 7+50				
		DATE -	REVISD -				CONTRACT NO. 72F46 <small>FED. ROAD DIST. NO. 6 ILLINOIS FED. AID PROJECT</small>				

FINAL SURVEY NO.	
SURVEYED PLOTTED TEMPLATE AREAS CHECKED	
BY	
DATE	

ORIGINAL SURVEY NO.	
SURVEYED PLOTTED TEMPLATE AREAS CHECKED	
BY	
DATE	





BY	DATE
FINAL SURVEY NO.	SURVEYED PLOTTED TEMPLATE AREAS CHECKED

BY	DATE
ORIGINAL SURVEY NO.	SURVEYED PLOTTED TEMPLATE AREAS CHECKED

FILE NAME =
 USER NAME = ebb
 q:\08files\080224\wo 3 - 1157 and 1d road\cadd sheets\0672f46-sht-xsht-5001.dgn

DESIGNED -	REVISIED -
DRAWN -	REVISIED -
CHECKED -	REVISIED -
DATE -	REVISIED -

PLOT SCALE = 10.0000 "/td>
PLOT DATE = 12/12/2012

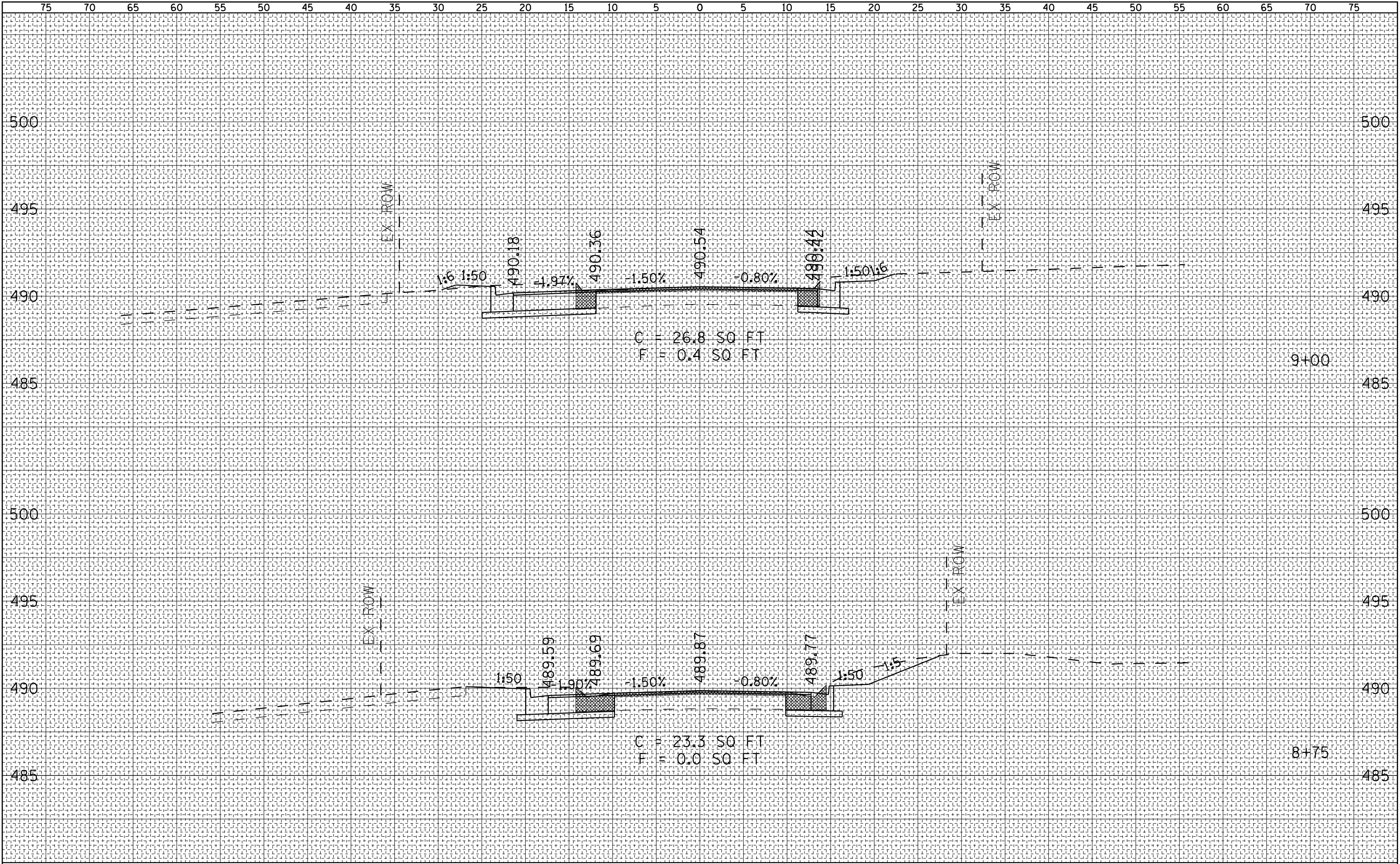
**STATE OF ILLINOIS
 DEPARTMENT OF TRANSPORTATION**

**LOCK & DAM ROAD
 CROSS SECTIONS**

SCALE: 1"=25' H
 1"=25' V SHEET NO. 3 OF 5 SHEETS STA. 8+25 TO STA. 8+50

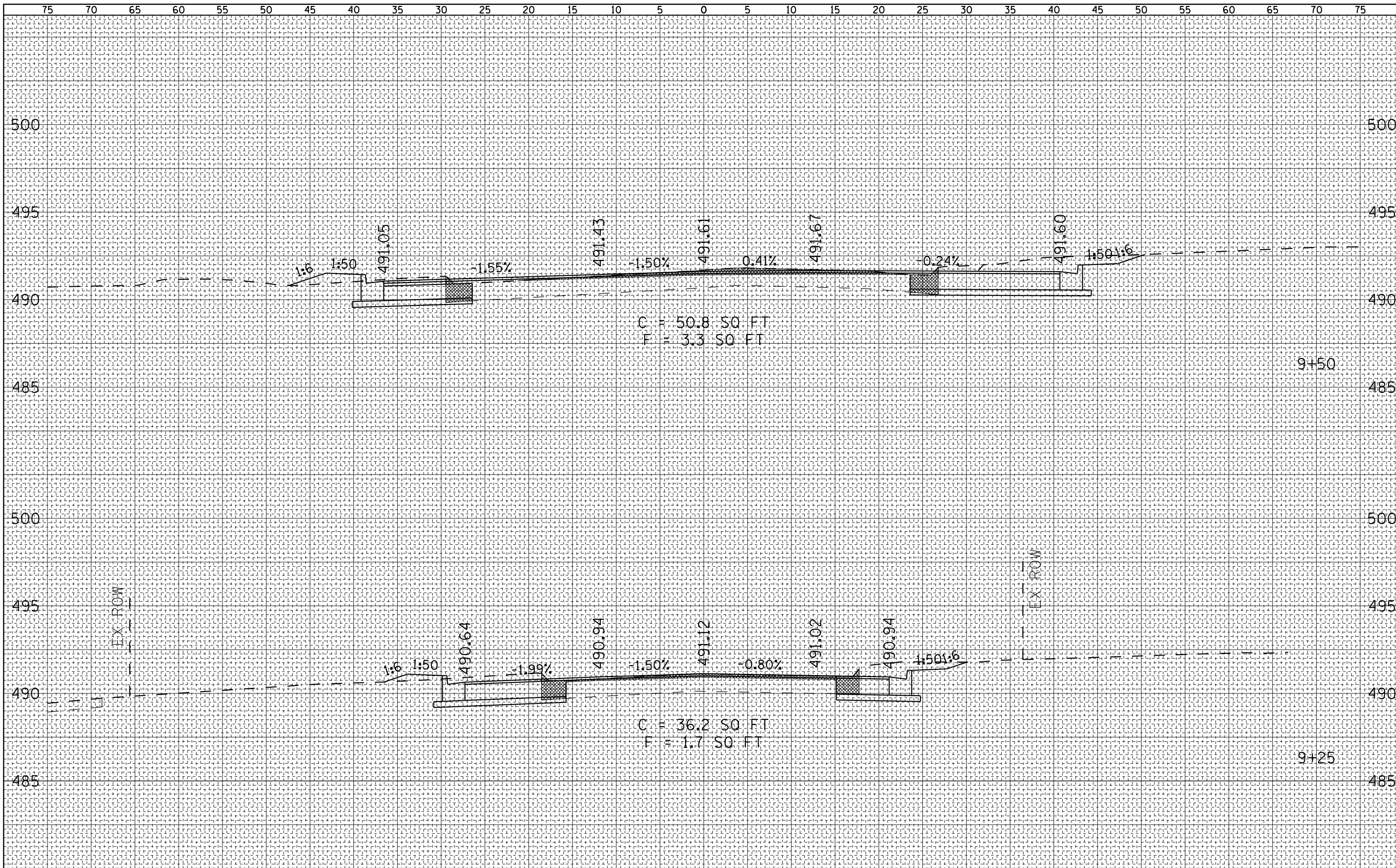
F.A.P. RTE.	SECTION	COUNTY	TOTAL SHEETS	SHEET NO.
502	(53) N-1	ADAMS	20	18
CONTRACT NO. 72F46				
FED. ROAD DIST. NO. 6 ILLINOIS FED. AID PROJECT				

BY _____	DATE _____
FINAL SURVEY NO. _____	SURVEYED PLOTTED TEMPLATE AREAS CHECKED



BY _____	DATE _____
ORIGINAL SURVEY NO. _____	SURVEYED PLOTTED TEMPLATE AREAS CHECKED

FILE NAME =	USER NAME = ebb	DESIGNED -	REVISD -	STATE OF ILLINOIS DEPARTMENT OF TRANSPORTATION	LOCK & DAM ROAD CROSS SECTIONS	F.A.P. RTE.	SECTION	COUNTY	TOTAL SHEETS	SHEET NO.
qr:\08files\080224\wo 3 - 1157 and 1d road\cadd sheets\0672F46-sht-xsht-5001.dgn	PLOT SCALE = 10.0000" / IN.	DRAWN -	REVISD -			502	(53) N-1	ADAMS	20	19
PLOT DATE = 12/12/2012	DATE -	CHECKED -	REVISD -	SCALE: 1" = 25'H 1" = 25' V		SHEET NO. 4 OF 5 SHEETS		STA. 8+75 TO STA. 9+00	CONTRACT NO. 72F46	
FED. ROAD DIST. NO. 6 ILLINOIS FED. AID PROJECT										



BY	DATE
SURVEYED	
PLOTTED	
TEMPLATE	
AREAS CHECKED	
NO.	

BY	DATE
ORIGINAL SURVEY	
PLOTTED	
TEMPLATE	
AREAS CHECKED	
NO.	