

STATE OF ILLINOIS
DEPARTMENT OF TRANSPORTATION
DIVISION OF HIGHWAYS

**PROPOSED
HIGHWAY PLANS**

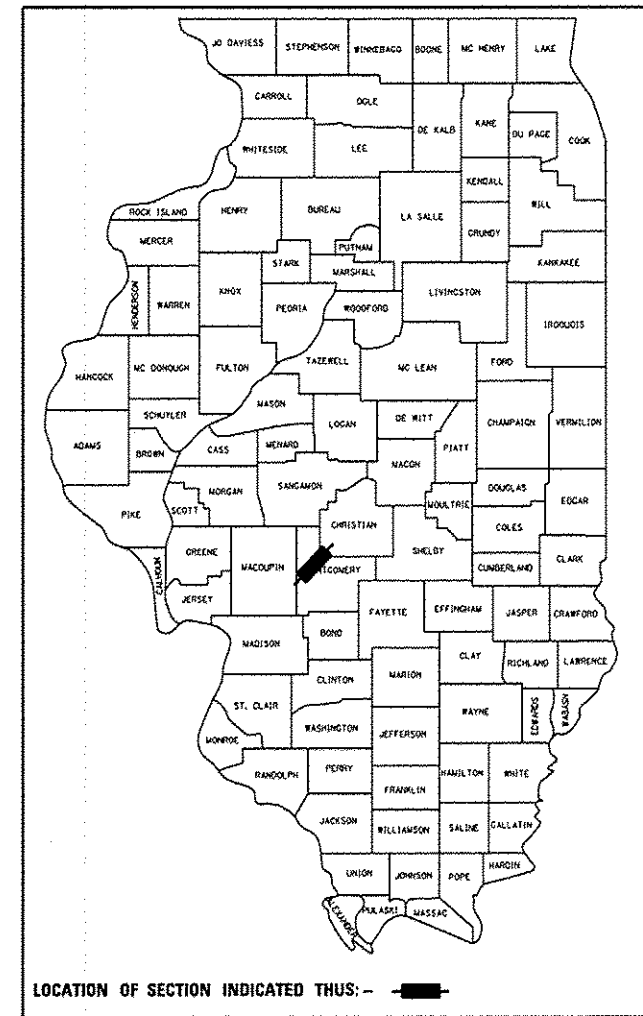
FAP ROUTE 42 & 714 (IL48 & IL127)
SECTION (101 & 137)N

INTERSECTION IMPROVEMENT
MONTGOMERY COUNTY

F.A.B. RTE.	SECTION	COUNTY	TOTAL SHEETS	SHEET NO.
**	(101 & 137)N	MONTGOMERY	8	1
ILLINOIS			CONTRACT NO. 72F88	

** 42 & 714

D-96-021-13

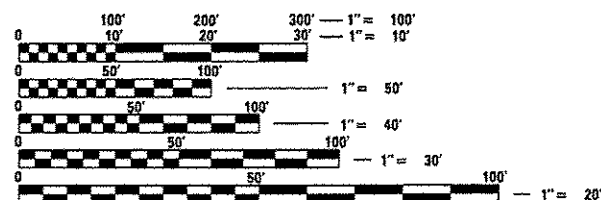


INDEX OF SHEETS

- 1 COVER
- 2 GENERAL NOTES
- 3 SUMMARY OF QUANTITIES
- 4 SCHEDULE OF QUANTITIES
- 5 TYPICAL SECTION
- 6 PLAN SHEET
- 7 PAVEMENT MARKING PLAN SHEET
- 8 BUTT JOINT DETAIL SHEET

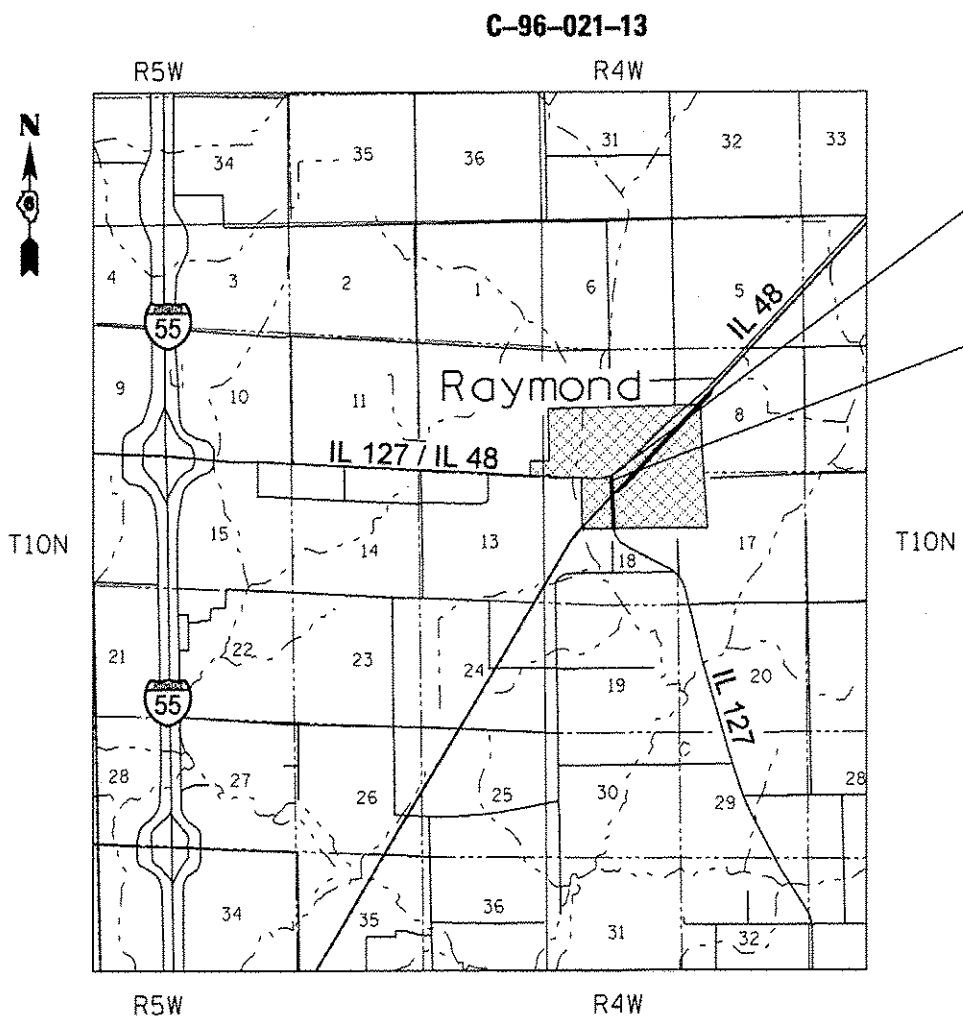
STANDARDS

000001-06	701311-03
701001-02	701501-06
701006-04	701901-02
701011-03	780001-03
701301-04	



FULL SIZE PLANS HAVE BEEN PREPARED USING STANDARD ENGINEERING SCALES. REDUCED SIZED PLANS WILL NOT CONFORM TO STANDARD SCALES. IN MAKING MEASUREMENTS ON REDUCED PLANS, THE ABOVE SCALES MAY BE USED.

J.U.L.I.E.
JOINT UTILITY LOCATION INFORMATION FOR EXCAVATION
1-800-892-0123
OR 811



GROSS LENGTH = 175.00 FT. = 0.033 MILE
NET LENGTH = 175.00 FT. = 0.033 MILE

ADT = 3,500 (2011)
PV = 84.43%
SU = 12.14%
MU = 3.43%

STATE OF ILLINOIS
DEPARTMENT OF TRANSPORTATION
DIVISION OF HIGHWAYS

SUBMITTED December 19 20 12
Page 2 of 2
DEPUTY DIRECTOR OF HIGHWAYS, REGION ENGINEER

Feb 1 20 13
John D. Baranzolo, P.E.
ENGINEER OF DESIGN AND ENVIRONMENT

Feb 1 20 13
Omer Osman, P.E.
DIRECTOR OF HIGHWAYS, CHIEF ENGINEER

**PRINTED BY THE AUTHORITY
OF THE STATE OF ILLINOIS**

PROJECT ENGINEER: JEFF MYERS (217) 782-4761

TEAM MANAGER: TOM COX (217) 524-7940

CONTRACT NO. 72F88

GENERAL NOTES

THE CONTRACTOR AND THE ENGINEER SHALL BE AWARE THAT NO SURVEY WAS PERFORMED FOR THIS PROJECT. THE STATIONING AND TOPO SHOWN IN THE PLANS WERE CREATED USING MICROFILM AND FIELD MEASUREMENTS MADE BY DESIGN PERSONAL. BOTH SHOULD BE CONSIDERED APPROXIMATE.

UNLESS NOTED OTHERWISE, STATIONS AND OFFSETS REFER TO CENTERLINE OF PROJECT.

ANY REFERENCE TO A STANDARD IN THESE PLANS SHALL BE INTERPRETED TO MEAN THE EDITION AS INDICATED BY THE SUB-NUMBER LISTED ON THE INDEX OF SHEETS OR THE COPY OF THE STANDARD INCLUDED IN THESE PLANS.

THE THICKNESS OF THE PAVEMENT WAS CALCULATED BY INFORMATION PROVIDED FROM DRILLING CORES. THE THICKNESS MAY VARY IN LOCATIONS THROUGHOUT THE PROJECT AND SHOULD BE CONSIDERED AND ESTIMATED QUANTITY. THE INTENT OF THE PROJECT IS TO REMOVE ALL EXISTING HMA SURFACE TO BARE CONCRETE. FILL WITH BINDER COURSE AND 1 1/2" OF SURFACE COURSE. THEREFORE, HMA SURFACE REMOVAL AND HMA LEVELING BINDER QUANTITIES MAY VARY FROM PLAN QUANTITY.

THE PAY ITEM TEMPORARY RAMP HAS BEEN INCLUDED FOR THE CONSTRUCTION OF TEMPORARY RAMPS IN ACCORDANCE WITH ARTICLE 406.08 OF THE STANDARD SPECIFICATIONS. THE COST SHALL INCLUDE BOTH THE INSTALLATION AND THE REMOVAL OF THE TEMPORARY RAMPS.

FOR STABILIZATION, ALL TYPE III BARRICADES SHALL REQUIRE A MINIMUM OF FOUR SAND BAGS PER BARRICADE.

EXISTING RAISED REFLECTIVE PAVEMENT MARKERS SHALL BE REMOVED PRIOR TO HOT-MIX ASPHALT SURFACE REMOVAL. RAISED REFLECTIVE PAVEMENT MARKERS WILL NOT BE REPLACED UNDER THIS CONTRACT.

RATES OF APPLICATION TABLES

THE FOLLOWING RATES OF APPLICATION HAVE BEEN ASSUMED IN CALCULATING PLAN QUANTITIES:

BITUMINOUS MATERIALS (PRIME COAT):	0.00038 TON / SQ YD
AGGREGATE MATERIALS (PRIME COAT):	0.002 TON / SQ YD
HOT-MIX ASPHALT LEVELING BINDER:	112 LBS / SQ YD / IN
HOT-MIX ASPHALT SURFACE MIX C:	112 LBS / SQ YD / IN
AGGREGATE MATERIALS:	2.05 TON / CU YD

COMMITMENTS

THERE ARE NO COMMITMENTS ON THIS PROJECT.

MIX REQUIREMENTS

Location(s):	
Mixture Use(s):	Binder Course
PG:	PG 64-22
Design Air Voids:	4.0% @ N70
Mixture Composition:	IL 19.0
Friction Aggregate:	N/A

Location(s):	
Mixture Use(s):	Surface Course
PG:	PG 64-22
Design Air Voids:	4.0% @ N70
Mixture Composition:	IL 9.5
Friction Aggregate:	Mix C

DISTRICT SIX	
EXAMINED <u>12/18</u>	20 <u>12</u>
<i>William R. B...</i>	
OPERATIONS ENGINEER	

EXAMINED <u>DEC 13</u>	20 <u>12</u>
<i>Jimmy J...</i>	
PROJECT IMPLEMENTATION ENGINEER	
EXAMINED <u>Dec. 19</u>	20 <u>12</u>
<i>ARML</i>	
PROGRAM DEVELOPMENT ENGINEER	

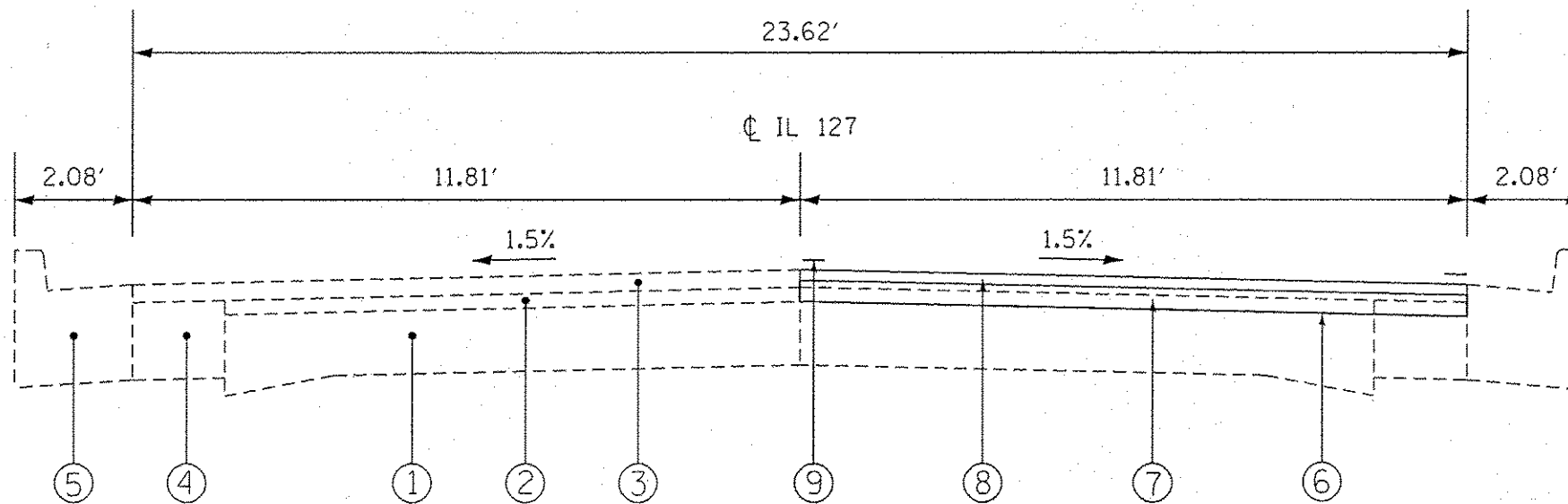
HOT-MIX ASPHALT BINDER COURSE, 3"						
LOCATION	LENGTH (FOOT)	WIDTH (FOOT)	AREA (SQ YD)	DEPTH (INCHES)	LEVELING BINDER (TONS)	
RT STA 986+39.92 TO RT STA 986+57.31	17.39	11.81	22.82	3.0	3.8	
RT STA 986+57.31 TO RT STA 987+03.16	45.85	15.92	81.08	3.0	13.6	
RT STA 987+03.16 TO RT STA 987+30.27	27.11	13.95	42.01	3.0	7.1	
RT STA 987+30.27 TO RT STA 988+14.92	84.65	11.81	111.08	3.0	18.7	
TOTAL:					43.2	

HOT-MIX ASPHALT SURFACE COURSE, 1 1/2"						
LOCATION	LENGTH (FOOT)	WIDTH (FOOT)	AREA (SQ YD)	DEPTH (INCHES)	SURFACE COURSE (TONS)	
RT STA 986+39.92 TO RT STA 986+57.31	17.39	11.81	22.82	1.5	1.9	
RT STA 986+57.31 TO RT STA 987+03.16	45.85	15.92	81.08	1.5	6.8	
RT STA 987+03.16 TO RT STA 987+30.27	27.11	13.95	42.01	1.5	3.5	
RT STA 987+30.27 TO RT STA 988+14.92	84.65	11.81	111.08	1.5	9.3	
TOTAL:					21.6	

HOT-MIX ASPHALT SURFACE REMOVAL				
LOCATION	LENGTH (FOOT)	WIDTH (FOOT)	HMA SURF REMOVAL, 4 1/2" (SQ YD)	TEMPORARY RAMP (SQ YD)
RT STA 986+39.92 RIGHT TURN LANE				6.56 20.00
RT STA 986+39.92 TO RT STA 986+57.31	17.39	11.81	22.82	
RT STA 986+57.31 TO RT STA 987+03.16	45.85	15.92	81.08	
RT STA 987+03.16 TO RT STA 987+30.27	27.11	13.95	42.01	
RT STA 987+30.27 TO RT STA 988+14.92	84.65	11.81	111.08	
RT of IL 127 NB LANE at SHORT ST ENTRANCE				43.89
LT of IL 127 NB LANE at SHORT ST ENTRANCE				43.89
RT STA 988+14.92				6.56
TOTALS:			257	121

PRIME COAT					
LOCATION	LENGTH (FOOT)	WIDTH (FOOT)	AREA (SQ YD)	HMA PRIME (TON)	AGG PRIME (TON)
RT STA 986+39.92 TO RT STA 986+57.31	17.39	11.81	22.82	0.01	0.05
RT STA 986+57.31 TO RT STA 987+03.16	45.85	15.92	81.08	0.03	0.16
RT STA 987+03.16 TO RT STA 987+30.27	27.11	13.95	42.01	0.02	0.08
RT STA 987+30.27 TO RT STA 988+14.92	84.65	11.81	111.08	0.04	0.22
TOTAL:				0.1	0.5

PAVEMENT MARKINGS							
LOCATION	DOUBLE YELLOW 5" (FOOT)	WHITE 5" (FOOT)	WHITE 8" (FOOT)	WHITE 12" (FOOT)	WHITE 24" (FOOT)	SHORT-TERM PAVEMENT MARKING (FOOT)	WORK ZONE PVMT MKING REMOVAL (SQ FT)
STA 986+58.25 TO STA 988+14.92	156.67						
RT STA 986+98.92 TO RT STA 987+11.97		13.05					
RT STA 987+86.24 TO RT STA 988+14.92		28.68					
RT STA 986+60.97 TO RT STA 986+72.22			14.15				
RT STA 986+37.13 TO RT STA 986+72.22			35.09				
RT STA 986+58.25 TO RT STA 986+72.22				12.29			
STA 986+58.25 STOP BAR					11.81	36.00	12.00
SKIP DASH						24.00	8.00
TOTALS:	156.7	41.7	49.2	12.3	11.8	60.0	20.0

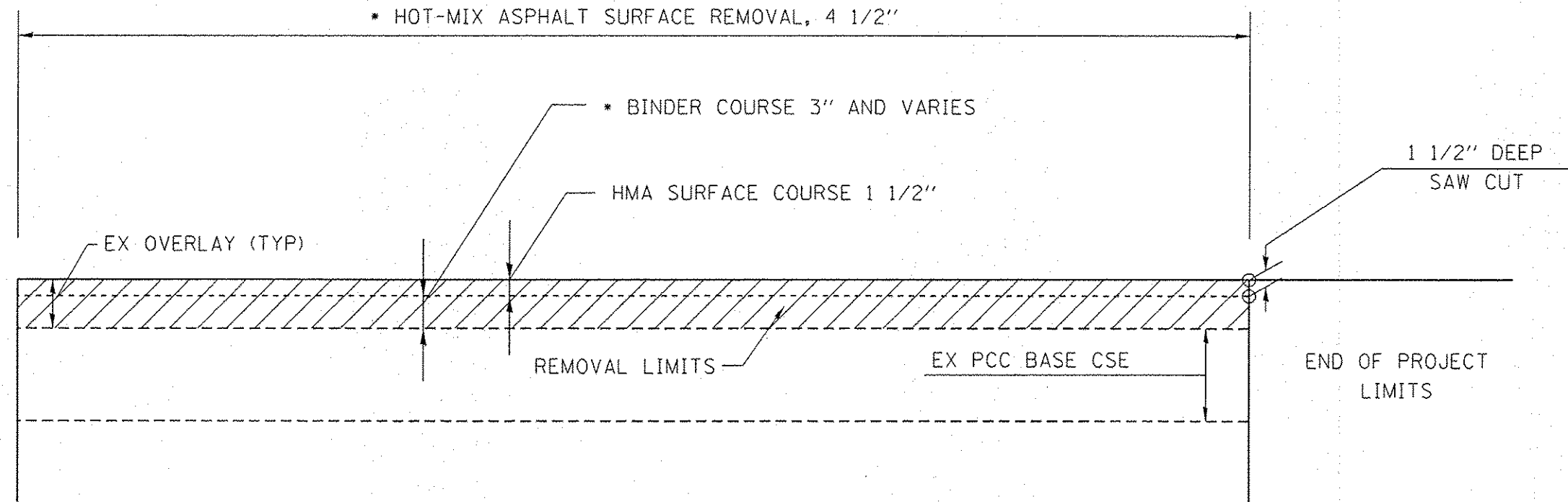


TYPICAL SECTION
RT STA 986+39.92 TO RT STA 988+14.92

LEGEND

- ① EX PCC BASE COURSE 9"
- ② EX HMA OVERLAY 2"
- ③ EX HMA OVERLAY 2.5"
- ④ EX PCC BASE COURSE 10"
- ⑤ EX COMB CONC CURB & GUTTER TY. B-6.18
- ⑥ PR HMA SURFACE REMOVAL 4.5"
- ⑦ PR HMA BINDER COURSE 3"
- ⑧ PR HMA SURFACE COURSE 1.5"
- ⑨ PR PAVEMENT MARKING - LINE 5"

FILE NAME *	USER NAME * sporkage	DESIGNED -	REVISED -	STATE OF ILLINOIS DEPARTMENT OF TRANSPORTATION	TYPICAL SECTION	F.A.P. RTE.	SECTION	COUNTY	TOTAL SHEETS	SHEET NO.	
Default	Default	DRAWN -	REVISED -		FAP 714 (IL 127)	**	(10) & (137H)	MONTGOMERY	8	5	
		CHECKED -	REVISED -		SCALE:	SHEET	OF	SHEETS	STA.	TO STA.	CONTRACT NO. 72F88
		DATE -	REVISED -								ILLINOIS FED. AID PROJECT



BUTT JOINT DETAIL

THE COSTS OF THE SAW CUT WILL NOT BE PAID FOR SEPERATLY BUT WILL BE INCLUDED IN THE COST OF HMA SURFACE REMOVAL - 4 1/2".

* SEE GENERAL NOTES

FILE NAME *	USER NAME * sparksgw	DESIGNED -	REVISED -	STATE OF ILLINOIS DEPARTMENT OF TRANSPORTATION	BUTT JOINT DETAIL		F.A.P. RTE.	SECTION	COUNTY	TOTAL SHEETS	SHEET NO.
ci:\pw-work\pvidot\sparksgw\08325484\0672F88-shd-detail.dgn		DRAWN -	REVISED -		FAP 714 (IL 127)		**	(101 & 137)N	MONTGOMERY	8	8
Default	PLOT SCALE * 100.0000' / 1"	CHECKED -	REVISED -		SCALE:	SHEET	OF	SHEETS	STA.	TO STA.	CONTRACT NO. 72F88
	PLOT DATE * Dec-20-2012 07:11:44AM	DATE -	REVISED -								ILLINOIS FED. AID PROJECT