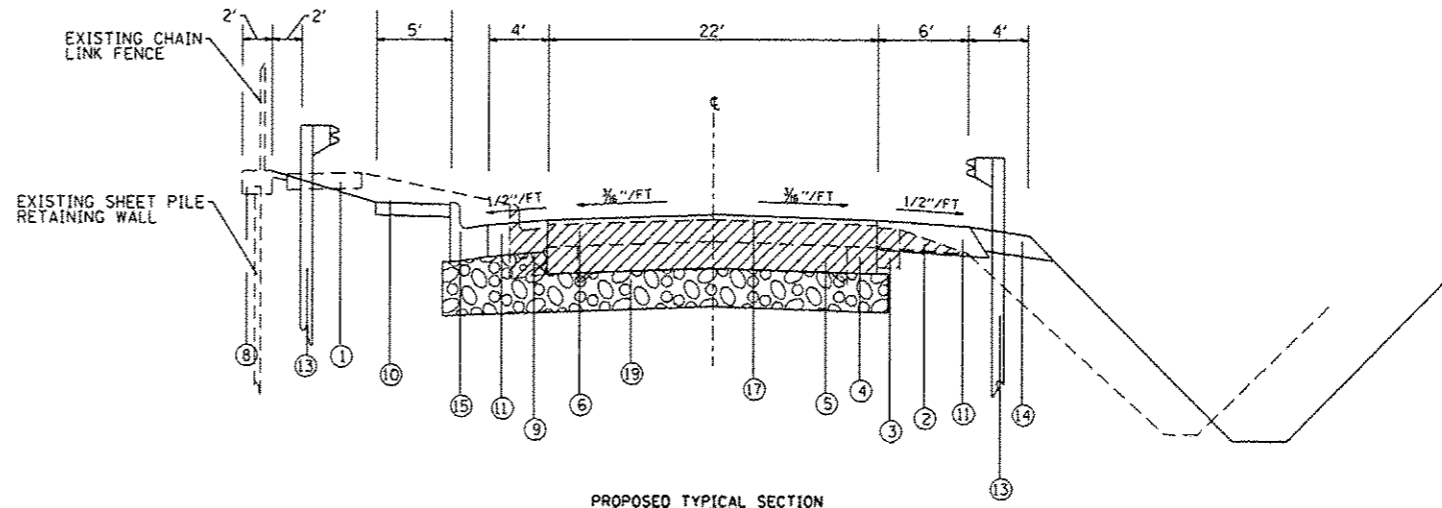
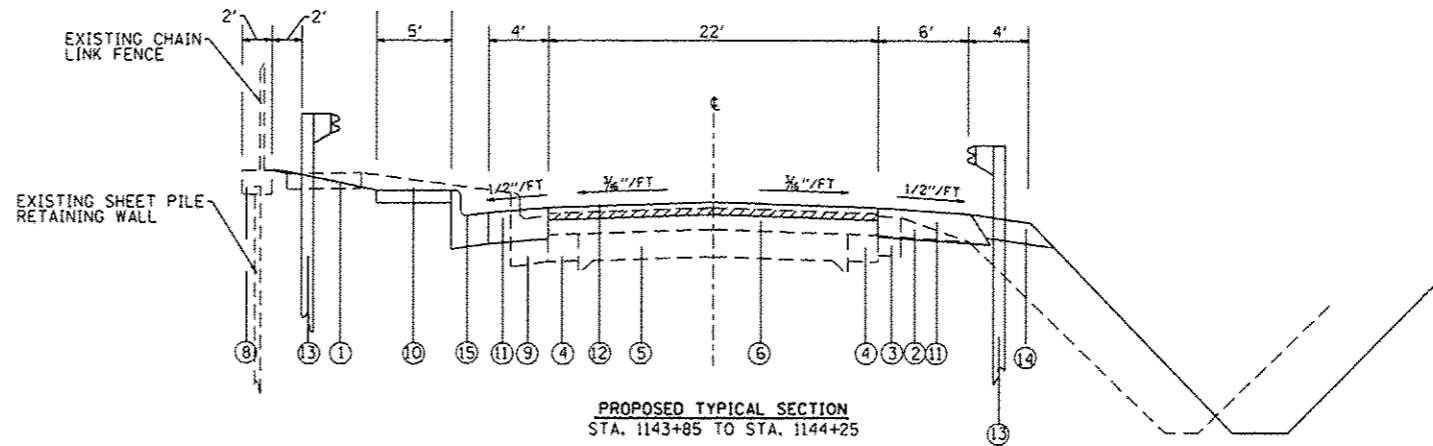


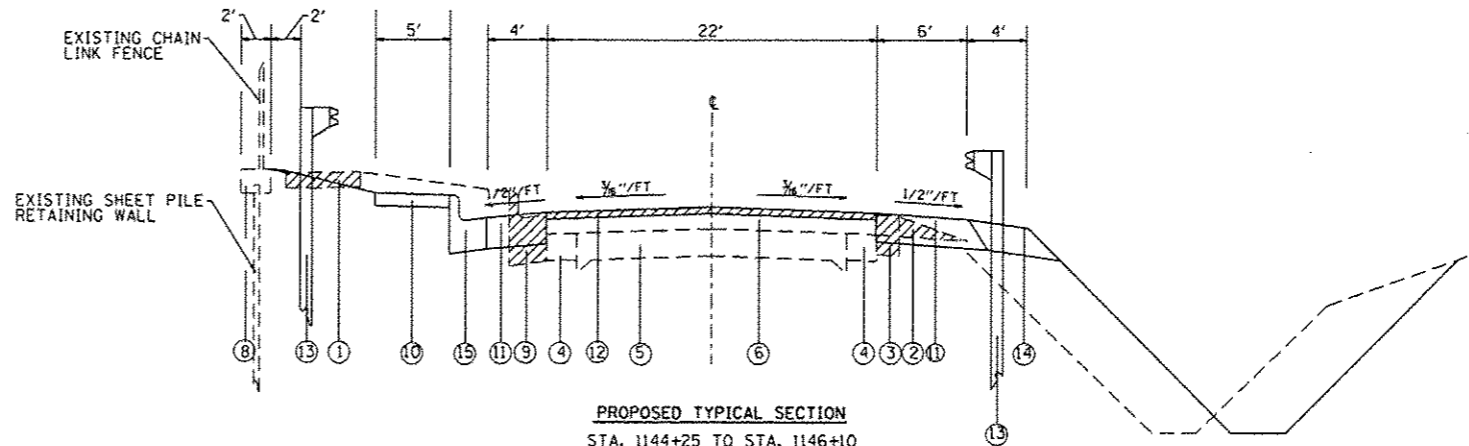
PROPOSED TYPICAL SECTION  
STA. 1143+29.88 TO STA. 1143+65.88



PROPOSED TYPICAL SECTION  
STA. 1143+65.88 TO STA. 1143+85



PROPOSED TYPICAL SECTION  
STA. 1143+85 TO STA. 1144+25



PROPOSED TYPICAL SECTION  
STA. 1144+25 TO STA. 1146+10

**LEGEND**

- ① EXISTING SIDEWALK - 4"
- ② EXISTING AGGREGATE WEDGE
- ③ EXISTING BITUMINOUS SHOULDER - 8"
- ④ EXISTING PCC WIDENING - 6"
- ⑤ EXISTING PAVEMENT - 9-6-9
- ⑥ EXISTING RESURFACING - 7"
- ⑦ EXISTING SPBGR
- ⑧ EXISTING RETAINING WALL CONCRETE CAP
- ⑨ EXISTING CCC&G, TY B6.24
- ⑩ PROPOSED PCC SIDEWALK - 4"
- ⑪ PROPOSED HMA SHOULDER - 8"
- ⑫ PROPOSED HMA SURFACE COURSE, MIX "D", N70 - 1 1/2"
- ⑬ PROPOSED SPBGR, TY B
- ⑭ PROPOSED AGGREGATE SHOULDER, TYPE A - 6"
- ⑮ PROPOSED CCC&G, TY B6.24
- ⑯ PROPOSED PARAPET RAILING
- ⑰ PROPOSED FULL DEPTH HMA PAVEMENT - 14"
- ⑱ PROPOSED CONCRETE BOX CULVERT - 12"
- ⑲ PROPOSED SUBBASE GRANULAR MATERIAL, TY B - MIN. 12" AND VARIES
- ⑳ PROPOSED TEMPORARY CONCRETE BARRIER
- ㉑ PROPOSED HMA SHOULDER - 6"
- ㉒ PROPOSED EARTH FILL VARIES
- ㉓ PROPOSED HMA BASE COURSE - 10"
- ㉔ PROPOSED TEMPORARY SPBGR, TY B
- ㉕ PROPOSED TEMPORARY PAVEMENT MARKING LINE - 4"
- ㉖ PROPOSED HMA BINDER COURSE, MIX "B", N70 - 2"
- ㉗ PROPOSED CONCRETE CURB TYPE B
- ㉘ PROPOSED HMA BINDER COURSE, MIX "B", N70 - 12 1/2"

▨ - PROPOSED REMOVAL (MILLING IS VARIABLE DEPTH FROM 1 1/2" TO 3 1/2")

FILE NAME =	USER NAME = #USER#	DESIGNED -	REVISED -	<b>STATE OF ILLINOIS DEPARTMENT OF TRANSPORTATION</b>	<b>TYPICAL SECTIONS</b>		F.A.P. RTE.	SECTION	COUNTY	TOTAL SHEETS	SHEET NO.
#FILE#		DRAWN -	REVISED -				785	136-BR	MADISON	58	11
PLOT SCALE = #SCALE#		CHECKED -	REVISED -				CONTRACT NO. 76049				
PLOT DATE = #DATE#		DATE -	REVISED -				FED. ROAD DIST. NO. ILLINOIS FED. AID PROJECT				
				SCALE:	SHEET NO. 3 OF 3 SHEETS	STA.	TO STA.				