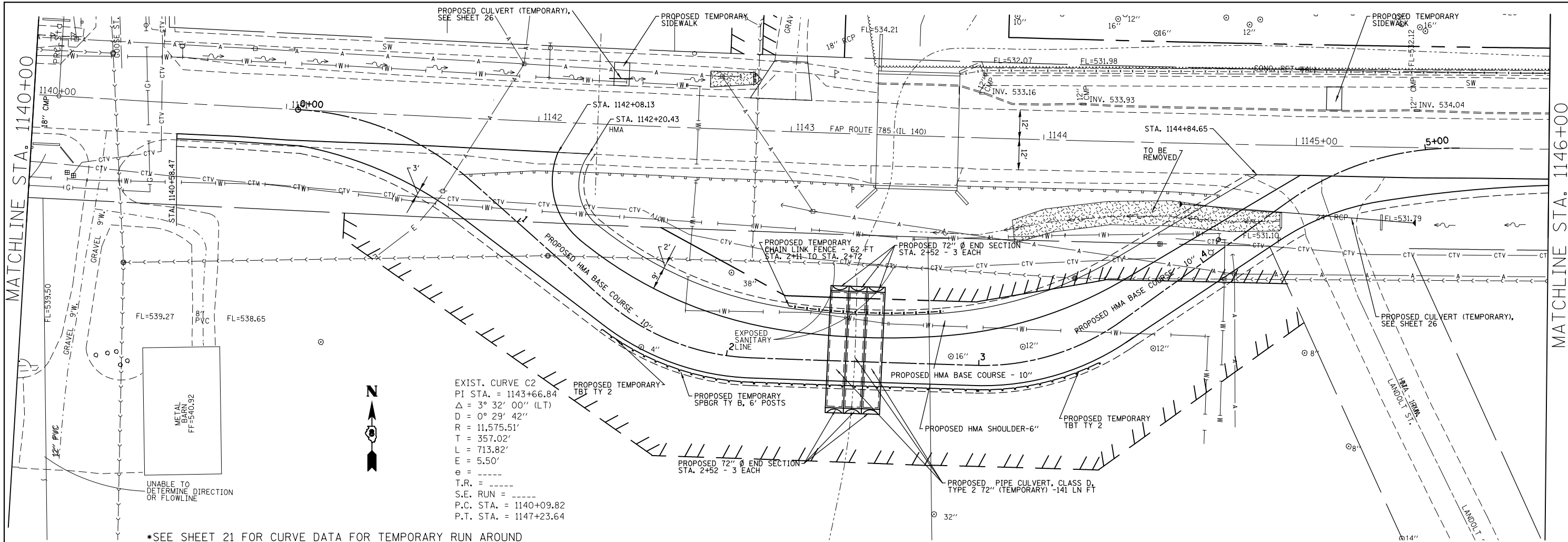


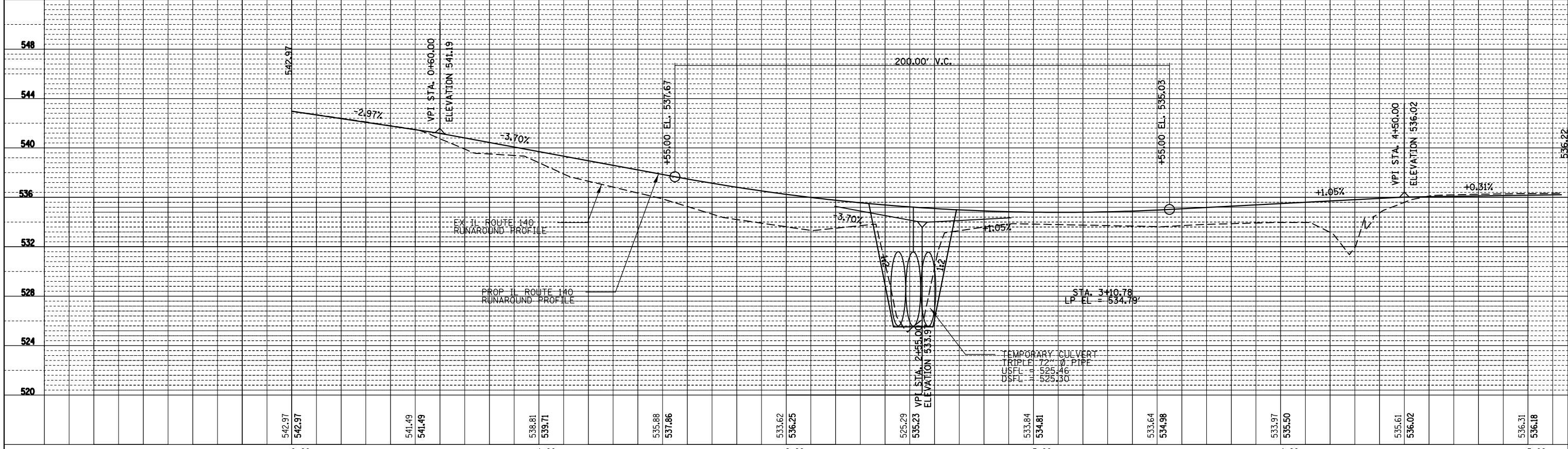
PLAN	SURVEYED	BY	DATE
	PLOTTED		
	ALIGNED		
	CHECKED		
	FILED		
	NO.		

PROFILE	SURVEYED	BY	DATE
	PLOTTED		
	GRADES		
	CHECKED		
	STRUCTURE		
	NOTATIONS		
	CHFD		
	NO.		



EXIST. CURVE C2  
 PI STA. = 1143+66.84  
 $\Delta = 3^\circ 32' 00''$  (LT)  
 $D = 0^\circ 29' 42''$   
 $R = 11,575.51'$   
 $T = 357.02'$   
 $L = 713.82'$   
 $E = 5.50'$   
 $e =$   
 $T.R. =$   
 $S.E. RUN =$   
 $P.C. STA. = 1140+09.82$   
 $P.T. STA. = 1147+23.64$

\*SEE SHEET 21 FOR CURVE DATA FOR TEMPORARY RUN AROUND



FILE NAME =	USER NAME = *USER*	DESIGNED -	REVISED -	<b>STATE OF ILLINOIS DEPARTMENT OF TRANSPORTATION</b>	<b>PLAN AND PROFILE RUNAROUND</b>			F.A.P. RTE.	SECTION	COUNTY	TOTAL SHEETS	SHEET NO.
*FILEL#		CHECKED -	REVISED -		785	136-BR	MADISON	58	19			
*MODELNAME#		DRAWN -	REVISED -		CONTRACT NO. 76D49							
		CHECKED -	REVISED -		ILLINOIS FED. AID PROJECT							

SCALE: 20:1 SHEET 1 OF 2 SHEETS STA. 1140+00 TO STA. 1146+00