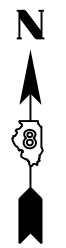


SEE LEGENDS, TOPOGRAPHIC STATEMENT, SURVEYORS NOTE(S) AND BASIS OF COORDINATES & BEARINGS STATEMENT ON SHEET 2

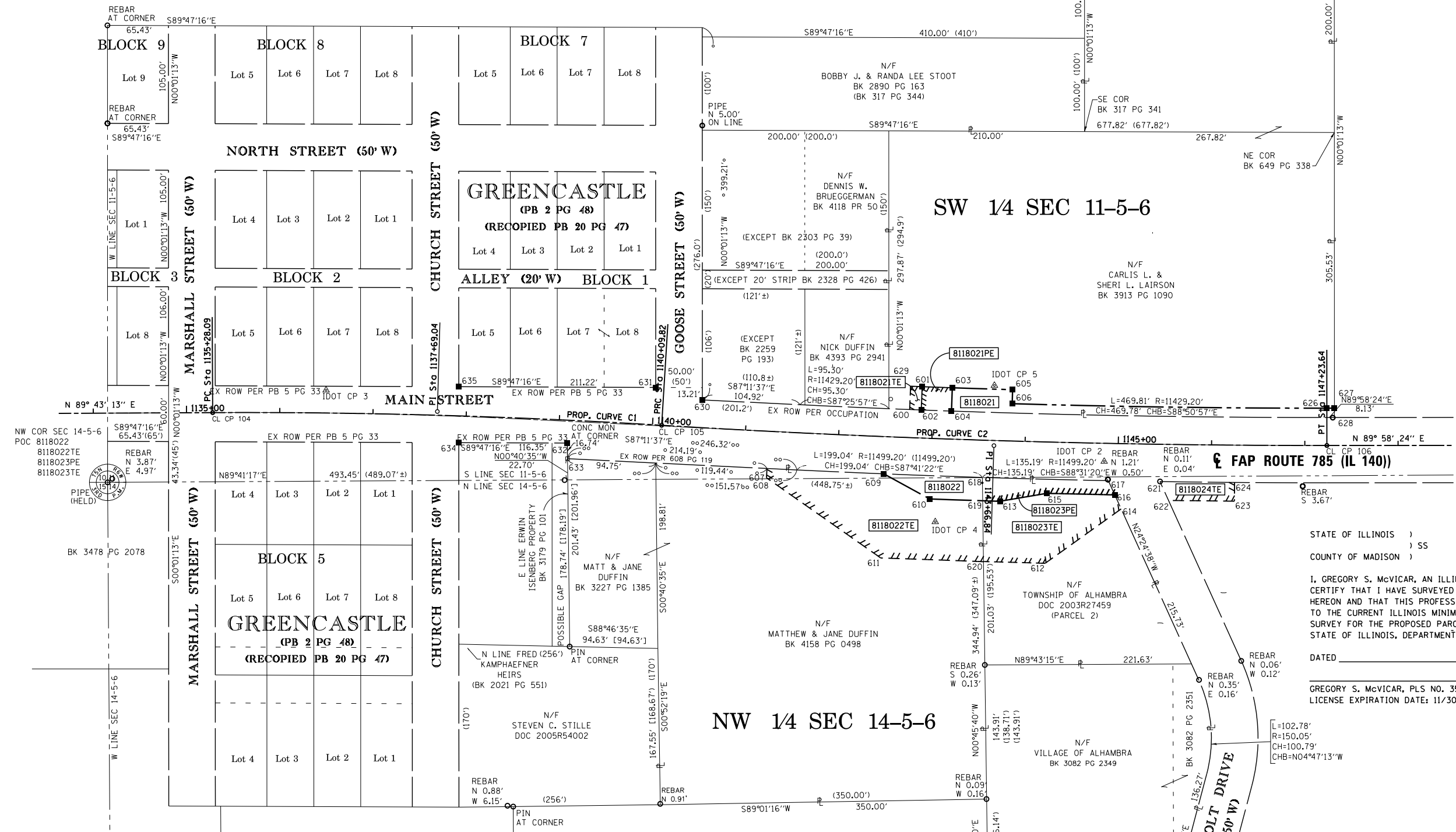


N/F
LINDA K. ABERT &
THE ESTATE OF
ROLLIN E. ABERT,
DECEASED

SPACE RESERVED FOR RECORDING OFFICER

| CENTERLINE COORDINATE TABLE | | |
|-----------------------------|-------------|-------------|
| STATION | NORTH | EAST |
| PI - 1137+69.04 | 809320.9788 | 417065.5785 |
| PC - 1135+28.09 | 809319.8020 | 416824.6282 |
| PRC - 1140+09.82 | 809306.2420 | 417306.0806 |
| PI - 1143+66.84 | 809284.4063 | 417662.4346 |
| PT - 1147+23.64 | 809284.5732 | 418019.4569 |

| PARCEL COORDINATE TABLE | | |
|-------------------------|-------------|-------------|
| POINT | NORTH | EAST |
| 600 | 809323.119 | 417572.0761 |
| 601 | 809347.6262 | 417585.4647 |
| 602 | 809322.6435 | 417584.5346 |
| 603 | 809346.4563 | 417617.7888 |
| 604 | 809321.4711 | 417616.9289 |
| 605 | 809344.3914 | 417682.4466 |
| 606 | 809329.3977 | 417682.0148 |
| 607 | 809259.9308 | 417419.0322 |
| 608 | 809249.9439 | 417418.5199 |
| 609 | 809254.1678 | 417544.33 |
| 610 | 809227.2437 | 417593.5617 |
| 611 | 809164.2414 | 417540.6903 |
| 612 | 809158.3624 | 417717.5552 |
| 613 | 809224.738 | 417668.9406 |
| 614 | 809216.5765 | 417798.8856 |
| 615 | 809233.3384 | 417719.4551 |
| 616 | 809231.7096 | 417792.0176 |
| 617 | 809246.8472 | 417785.1475 |
| 618 | 809250.3336 | 417650.003 |
| 619 | 809225.3106 | 417650.3354 |
| 620 | 809160.2512 | 417651.1997 |
| 621 | 809245.8781 | 417840.4957 |
| 622 | 809225.7417 | 417849.6345 |
| 623 | 809224.9491 | 417920.3336 |
| 624 | 809244.9484 | 417920.4947 |
| 626 | 809324.5685 | 418019.4383 |
| 627 | 809324.5723 | 418027.5735 |
| 628 | 809314.5723 | 418027.5771 |
| 629 | 809348.1006 | 417573.0332 |
| 630 | 809333.4107 | 417349.756 |
| 631 | 809346.8036 | 417299.7512 |
| 632 | 809287.1546 | 417204.9016 |
| 633 | 809270.4175 | 417205.0993 |
| 634 | 809287.5856 | 417088.5539 |
| 635 | 809347.5861 | 417088.5327 |



STATE OF ILLINOIS)
) SS
COUNTY OF MADISON)

I, GREGORY S. McVICAR, AN ILLINOIS PROFESSIONAL LAND SURVEYOR, CERTIFY THAT I HAVE SURVEYED THE PLAT OF HIGHWAY SHOWN HEREON AND THAT THIS PROFESSIONAL SERVICE CONFORMS TO THE CURRENT ILLINOIS MINIMUM STANDARDS FOR A BOUNDARY SURVEY FOR THE PROPOSED PARCEL TO BE ACQUIRED BY THE STATE OF ILLINOIS, DEPARTMENT OF TRANSPORTATION, SHOWN HEREON.

DATED _____
GREGORY S. McVICAR, PLS NO. 3512
LICENSE EXPIRATION DATE: 11/30/2012



PROP. CURVE C1
PI STA. = 1137+69.04
Δ = 3° 47' 11" (RT)
D = 0° 47' 09"
R = 7,289.80'
T = 240.95'
L = 481.73'
E = 3.98'
P.C. STA. = 1135+28.09
P.T. STA. = 1140+09.82

PROP. CURVE C2
PI STA. = 1143+66.84
Δ = 3° 32' 00" (LT)
D = 0° 29' 42"
R = 11,575.51'
T = 357.02'
L = 713.82'
E = 5.50'
P.C. STA. = 1140+09.82
P.T. STA. = 1147+23.64

| CONTROL COORDINATE TABLE | | |
|--------------------------|-------------|-------------|
| CONTROL POINT | NORTH | EAST |
| CL CP 104 | 809319.7660 | 416824.6150 |
| CL CP 105 | 809306.2630 | 417306.0620 |
| CL CP 106 | 809284.5280 | 418019.5280 |
| IDOT CP 2 | 809279.1443 | 415677.4545 |
| IDOT CP 3 | 809343.9293 | 416946.2046 |
| IDOT CP 4 | 809202.7413 | 417599.4835 |
| IDOT CP 5 | 809348.9547 | 417662.9530 |

SHERRILL ASSOCIATES, INC.
Engineers - Surveyors - Planners
Professional Design Firm Number 184-001238
316 North Main Street | 2727 Telegraph Road
Edwardsville, IL 62025 | St. Louis, MO 63125

ILLINOIS DEPARTMENT OF TRANSPORTATION
PLAT OF HIGHWAYS
FAP ROUTE 785 (IL 140)
SECTION 136-BR
MADISON COUNTY
JOB NO. R-98-018-11
TOTAL HOLDING

SCALE: 1" = 60'

ILLINOIS DEPARTMENT OF TRANSPORTATION
DIVISION OF HIGHWAYS/REGION 5/DISTRICT 8
1102 EASTPORT PLAZA DRIVE
COLLINGSVILLE, ILLINOIS 62234-6198

| F.A. RTE. | SECTION | COUNTY | TOTAL SHEETS | SHEET NO. |
|-----------|---------|---------|--------------|-----------|
| 785 | 136-BR | MADISON | 58 | 32 |

CONTRACT NO. 76049

FED. ROAD DIST. NO. - ILLINOIS FED. AID PROJECT