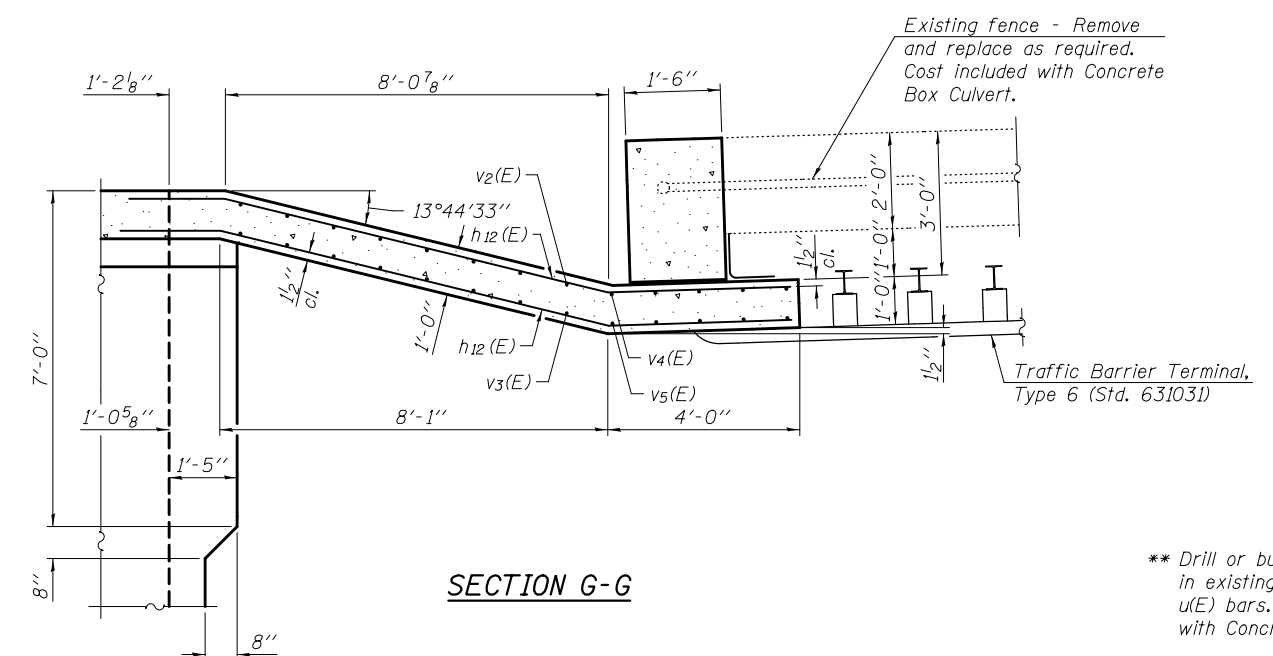


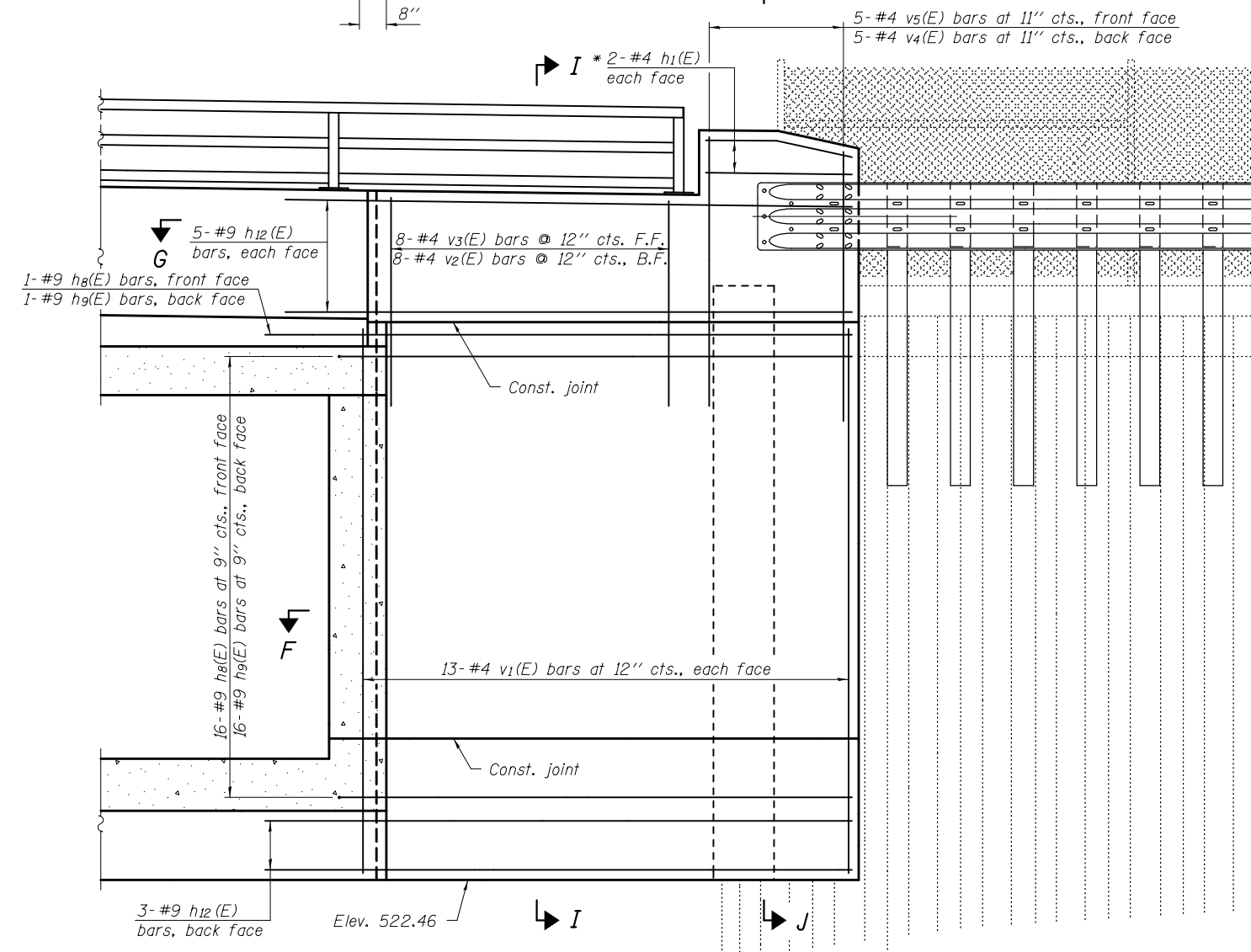
SECTION F-F

* Bend reinforcement in field to fit end tapers.

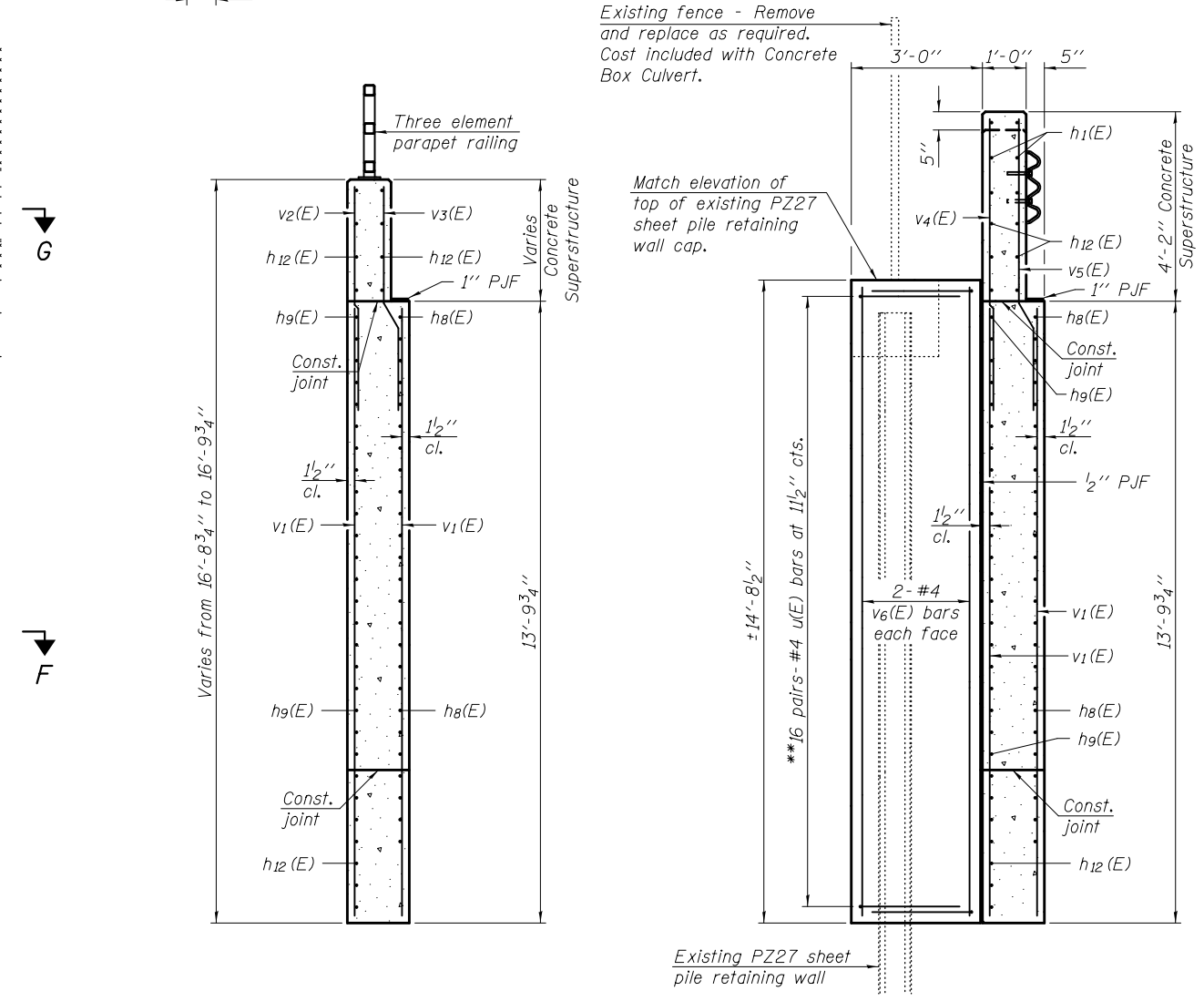


SECTION G-G

** Drill or burn 1/4" φ holes in existing sheet piling for u(E) bars. Cost included with Concrete Box Culverts.



SECTION H-H



SECTION I-I

SECTION J-J

DESIGNED - SEAN CHAU	EXAMINED - <i>Jaime F. Joffe</i>	DATE - FEBRUARY 1, 2013
CHECKED - PAUL GURKLYS	ACTING ENGINEER OF BRIDGE DESIGN	
DRAWN - MICHAEL B. MOSSMAN	PASSED - <i>Paul Joffe</i>	REVISED
CHECKED - S.C. / P.G.	ACTING ENGINEER OF BRIDGES AND STRUCTURES	REVISED

STATE OF ILLINOIS
DEPARTMENT OF TRANSPORTATION

CULVERT DETAILS - NORTHEAST WINGWALL
STRUCTURE NO. 060 - 2051

F.A.P. RTE.	SECTION	COUNTY	TOTAL SHEETS	SHEET NO.
785	136-BR	MADISON	58	42
CONTRACT NO. 76D49				

SHEET NO. 9 OF 12 SHEETS

ILLINOIS FED. AID PROJECT