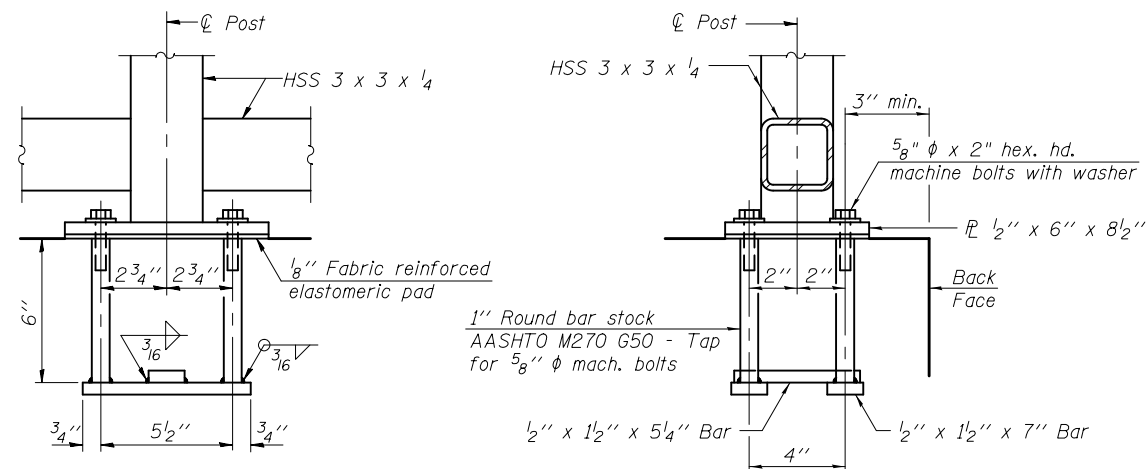
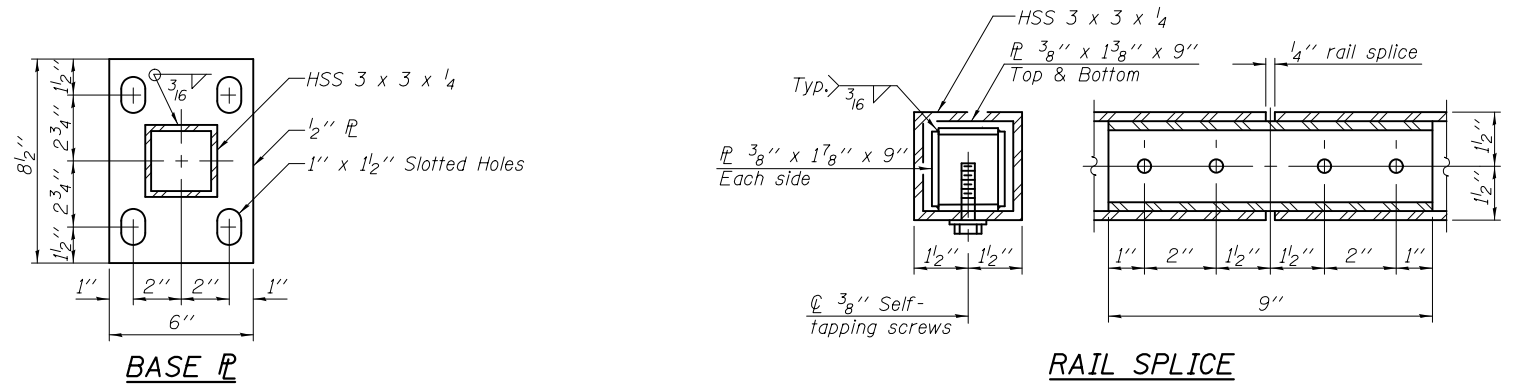
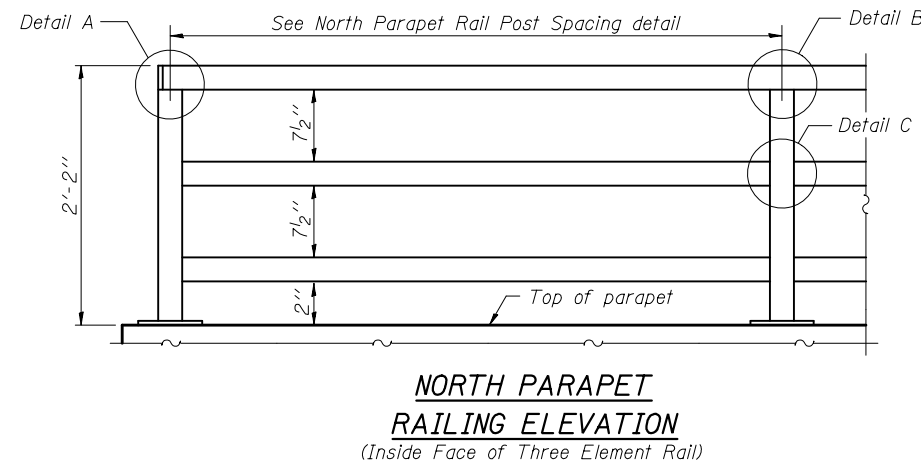
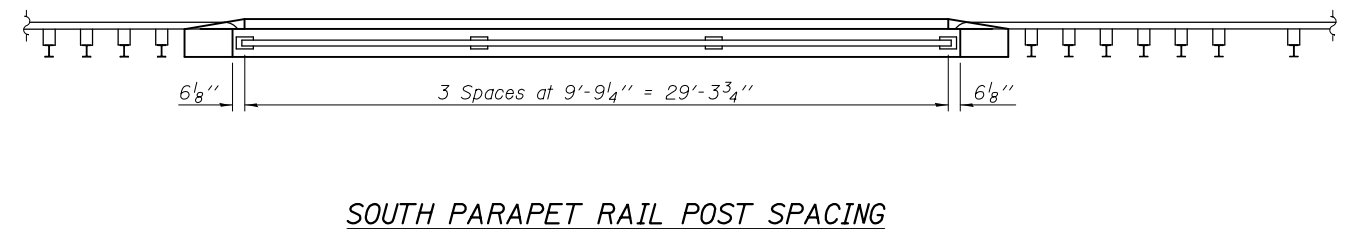
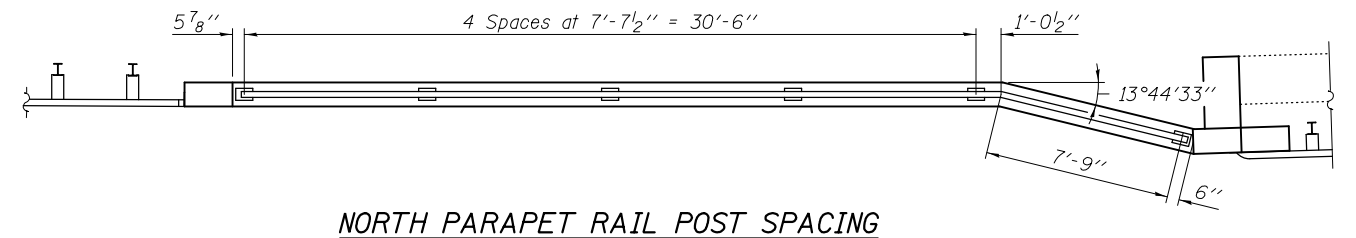


Note:
All steel rail elements shall be galvanized according to Article 509.05 of the Standard Specifications.



In lieu of the cast-in-place anchor device shown, the Contractor has the option of drilling and setting 5/8" ϕ anchor rods according to Article 509.06 of the Standard Specifications. Embedment shall be according to the manufacturer's specifications.



BILL OF MATERIAL

Item	Unit	Quantity
Parapet Railing	Foot	69

DESIGNED - SEAN CHAU
CHECKED - PAUL GURKLYS
DRAWN - MICHAEL B. MOSSMAN
CHECKED - S.C. / P.G.

EXAMINED
PASSED
ACTING ENGINEER OF BRIDGE DESIGN
ACTING ENGINEER OF BRIDGES AND STRUCTURES

DATE - FEBRUARY 1, 2013
REVISED
REVISED

STATE OF ILLINOIS
DEPARTMENT OF TRANSPORTATION

PARAPET RAILING
STRUCTURE NO. 060 - 2051

SHEET NO. 11 OF 12 SHEETS

F.A.P. RTE.	SECTION	COUNTY	TOTAL SHEETS	SHEET NO.
785	136-BR	MADISON	58	44
CONTRACT NO. 76D49				
ILLINOIS FED. AID PROJECT				