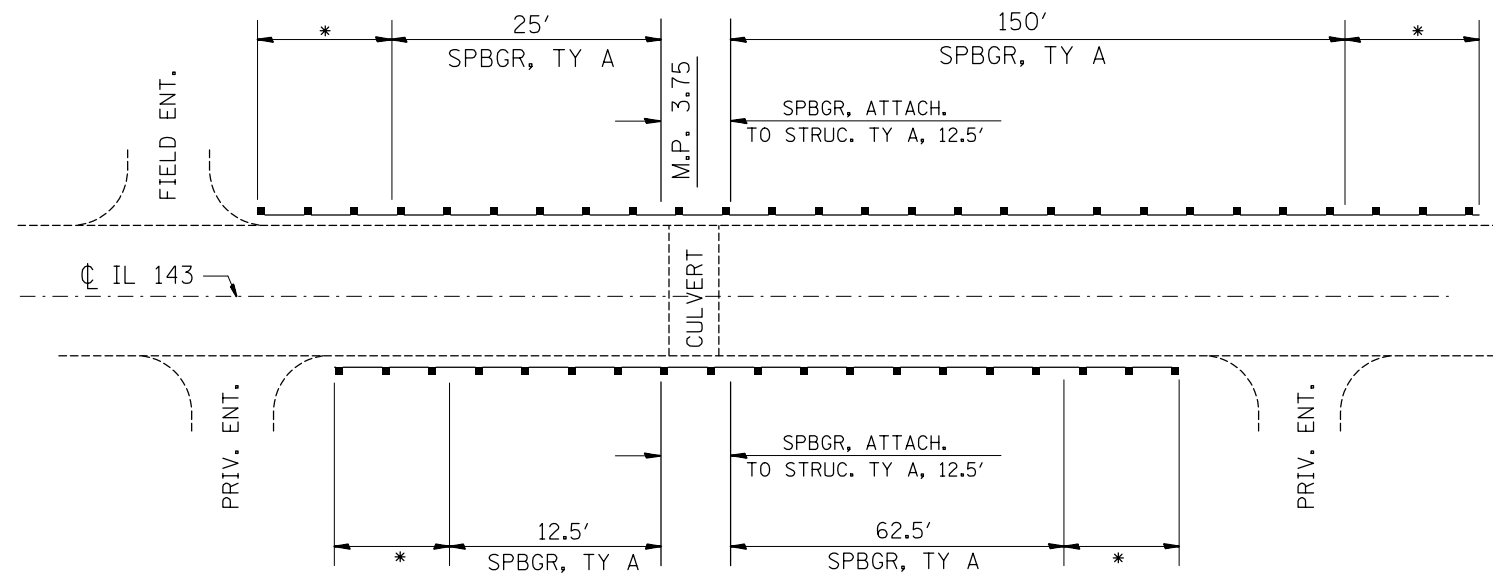


GUARDRAIL REMOVAL
(PLAN VIEW)



PROPOSED GUARDRAIL
(PLAN VIEW)

- * = TRAFFIC BARRIER TERM. TYPE 1 SPECIAL (TANGENT)
- ** = TRAFFIC BARRIER TERM. TYPE 1 SPECIAL (TANGENT), MODIFIED
- *** = TRAFFIC BARRIER TERM. TYPE 6A
- ** = TRAFFIC BARRIER TERM. TYPE 6A (MODIFIED)

FILE NAME =	USER NAME = dntelmenjn	DESIGNED -	REVISED -
et:\pw\work\pwidot\dntelmenjn\1\0281732\	876f27-shr-plan.dgn	DRAWN -	REVISED -
	PLOT SCALE = 100.0000' / in.	CHECKED -	REVISED -
	PLOT DATE = 12/14/2012	DATE -	REVISED -

STATE OF ILLINOIS
DEPARTMENT OF TRANSPORTATION

GUARDRAIL DETAILS
(LOCATION #3)

SCALE: SHEET NO. OF SHEETS STA. TO STA.

F.A.P. RTE.	SECTION	COUNTY	TOTAL SHEETS	SHEET NO.
789	(54,58,68) RS-4	MADISON	44	18
CONTRACT NO. 76F27				
FED. ROAD DIST. NO. ILLINOIS FED. AID PROJECT				