

ELEVATION
Looking North at South Railing.
North Railing similar by 180° rotation.

GENERAL NOTES

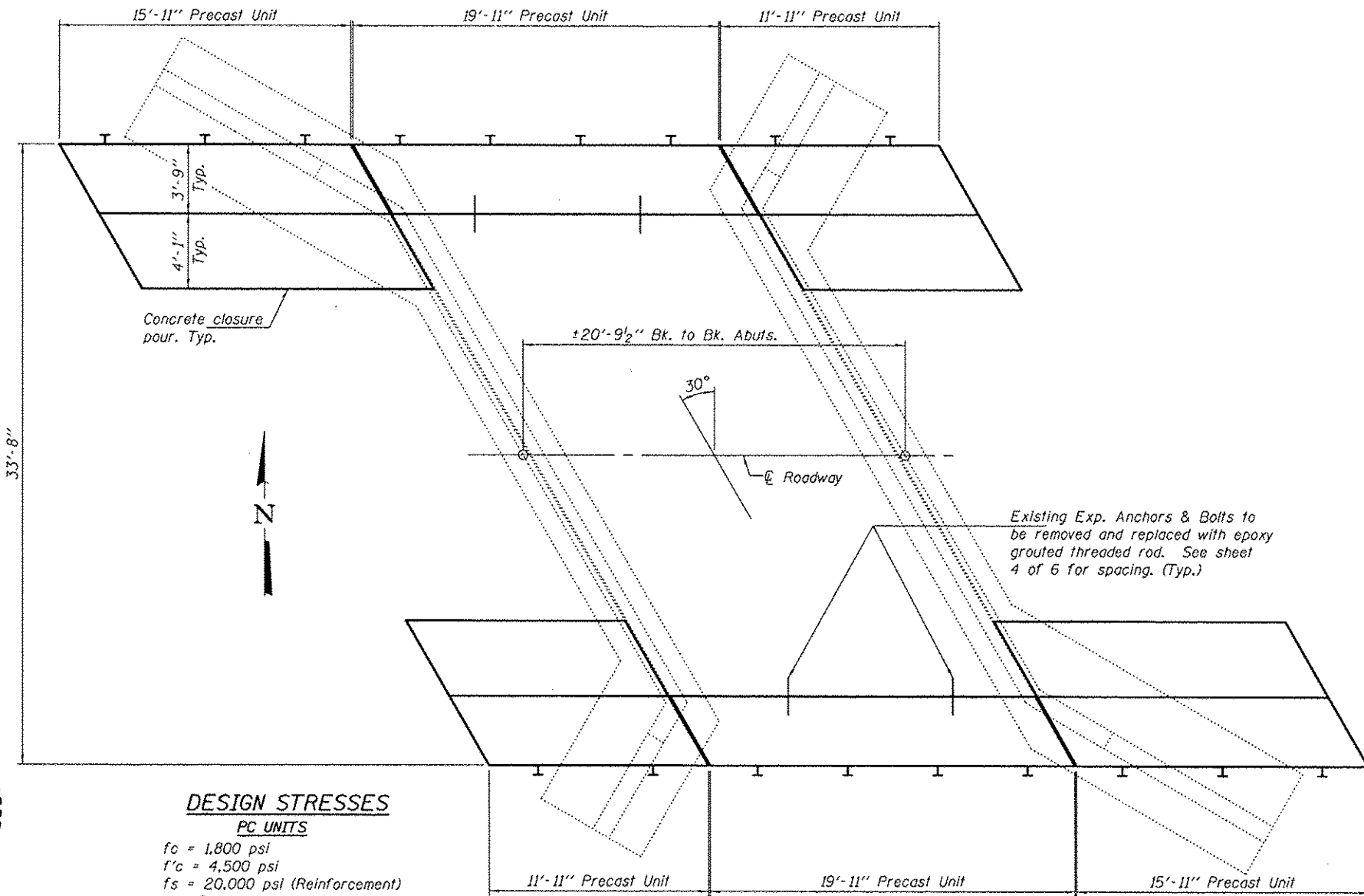
Plan dimensions and details relative to existing structure have been taken from existing plans and are subject to nominal construction variations. It shall be the Contractor's responsibility to verify such dimensions and details in the field and make necessary approved adjustments prior to construction or ordering of materials. Such variations shall not be cause for additional compensation for a change in the scope of the work, however, the Contractor will be paid for the quantity actually furnished at the unit price bid for the work.

Any damage done to the bridge during Precast Unit removal shall be repaired by the Contractor. Cost to be included in the cost of Removal of Existing Precast Concrete Units.

Temporary concrete barrier shall only be anchored into the overlay and not the Precast Concrete Units.

Reinforcement bars designated (E) shall be epoxy coated.

The contractor shall salvage the existing bridge rail and posts and shall deliver them to:
IDOT Maintenance Facility
12540 Sportsman Road
Highland, Illinois 62249
Contact: Todd Reilson at 618-659-5110
Cost included with Bridge Rail Removal.

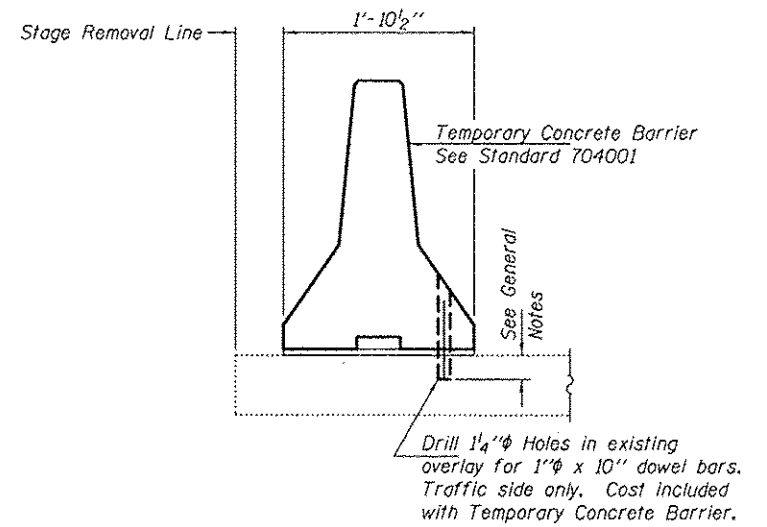


PLAN

DESIGN STRESSES

PC UNITS
 $f_c = 1,800$ psi
 $f'_c = 4,500$ psi
 $f_s = 20,000$ psi (Reinforcement)
 $n = 8$

FIELD UNITS
 $f'_c = 3,500$ psi
 $f_y = 60,000$ psi (Reinforcement)

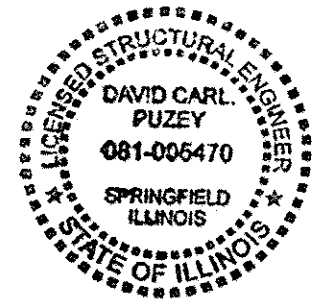


SECTION THRU SLAB

TOTAL BILL OF MATERIAL

ITEM	UNIT	QUANTITY
Precast Concrete Bridge Slab	Sq. Ft.	355
Removal of Existing Precast Concrete Units	Sq. Ft.	355
Reinforcement Bars, Epoxy Coated	Pound	1710
Steel Railing, Type SM	Foot	96
Waterproofing Membrane System	Sq. Yd.	39.4
Concrete Removal	Cu. Yd.	10.5
Concrete Superstructure	Cu. Yd.	10.5
Bridge Rail Removal	Foot	96

* On Precast Concrete Bridge Slab only.
For quantity of HMA Surface Course Mix see roadway plans.



Expires: November 30, 2014

DESIGNED: <i>David Carl Puzey</i>	EXAMINED: <i>Timothy A. Adams</i>	DATE: JANUARY 31, 2013
CHECKED: <i>David Carl Puzey</i>	PASSED: <i>Timothy A. Adams</i>	
DRAWN: Kyle M. Steffen		
CHECKED: <i>David Carl Puzey</i>		

STATE OF ILLINOIS
DEPARTMENT OF TRANSPORTATION

GENERAL PLAN & ELEVATION
ILLINOIS ROUTE 143 OVER SILVER CREEK
SN 060-0246

SHEET NO. 1 OF 6 SHEETS

F.A.S. RTE.	SECTION	COUNTY	TOTAL SHEETS	SHEET NO.
775	(54, 58, 60)RS-4	MADISON	44	34
CONTRACT NO. 76F27			ILLINOIS FED. AID PROJECT	