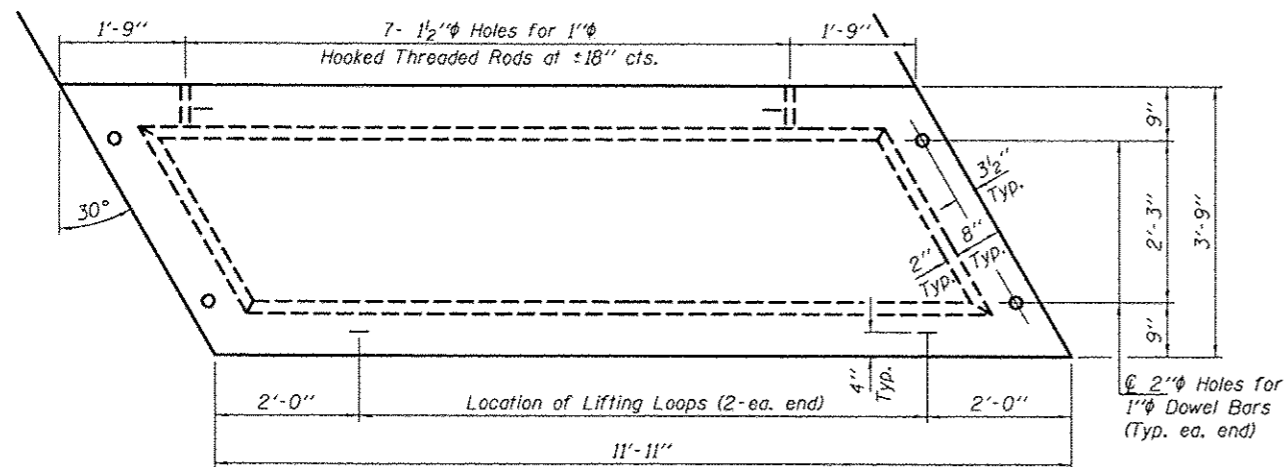
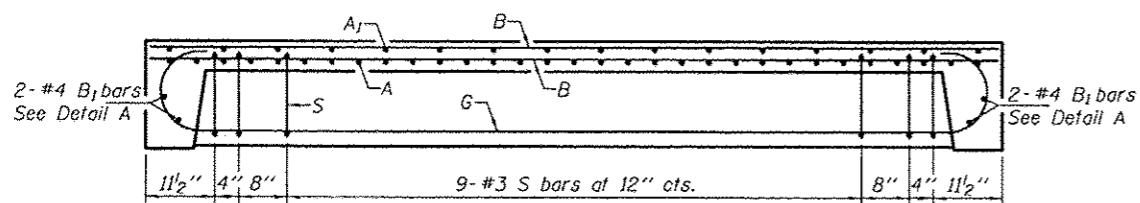


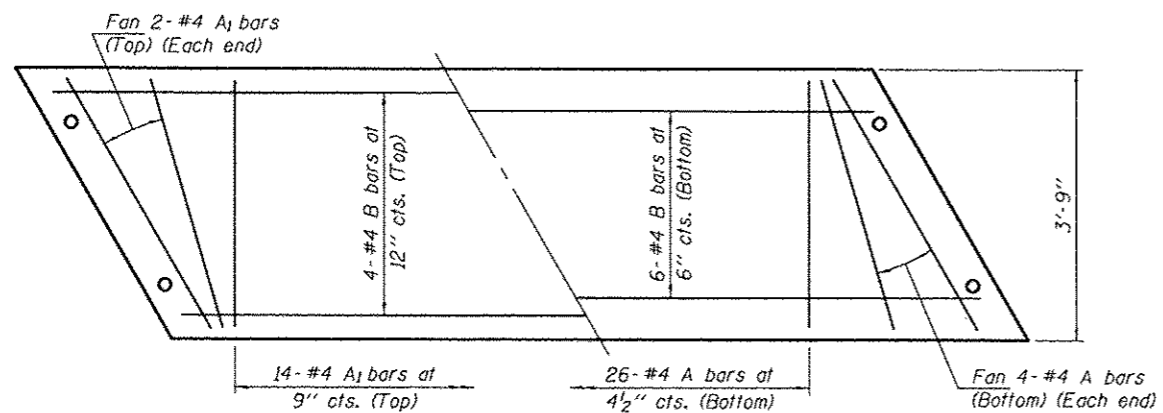
ELEVATION



TYPICAL BEAM PLAN

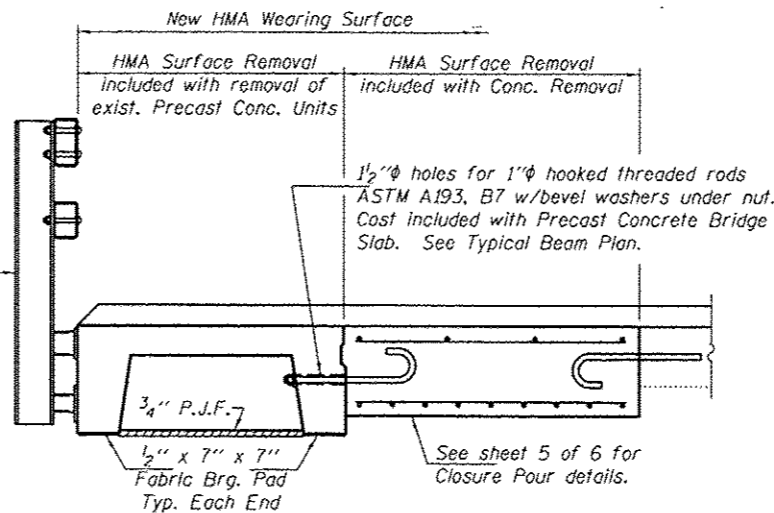


LONGITUDINAL SECTION

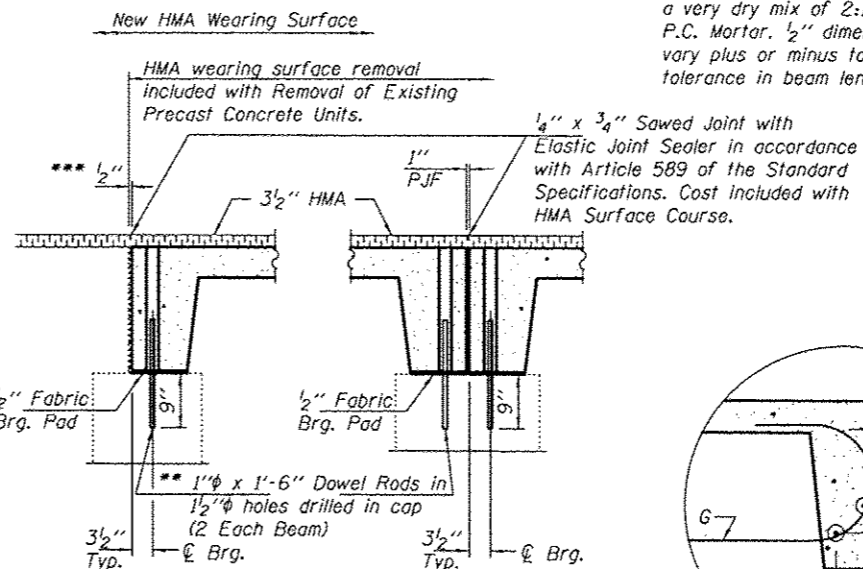


SLAB REINFORCEMENT

Steel Railing, Type SM
See sheet 6 of 6.



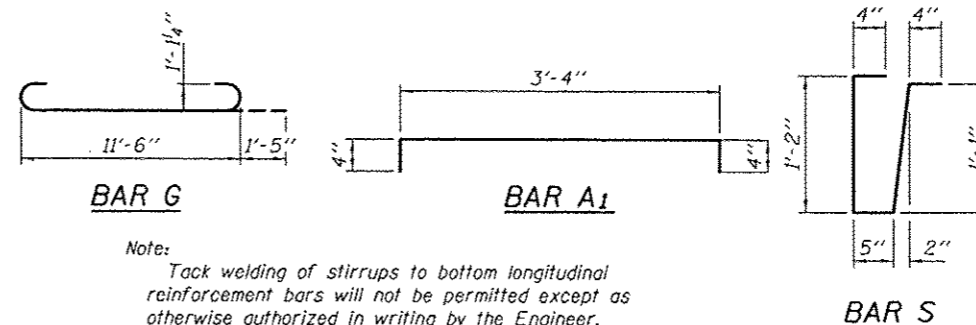
PARTIAL CROSS-SECTION



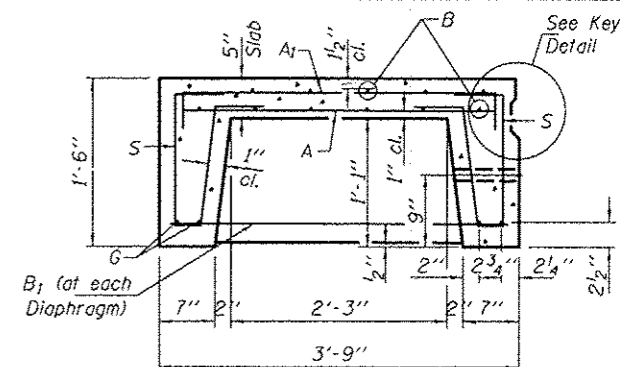
SECTION THRU APPR. CAP SECTION THRU ABUT.
(At Rt. Ls) (At Rt. Ls)

** Existing dowel rods are to be burned off, ground flush, and sealed with epoxy prior to placement of new beams. Cast included in Removal of Existing Precast Concrete Units. After beams have been erected holes shall be drilled into cap and dowel rods placed. Dowel holes shall be filled with non-shrink grout to top of beam and allowed to cure a minimum of 24 hours prior to grouting the shear keys.

Note: The surface of the member shall not deviate more than 1/1200 of the full length of the member from a straight line connecting the two end points on the member's surface. (See Special Provision Precast Concrete Structures)

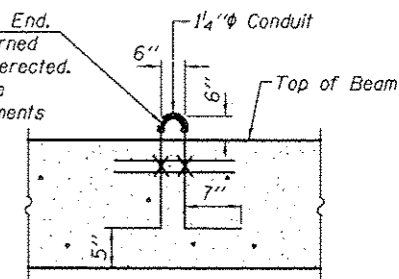


Note: Tack welding of stirrups to bottom longitudinal reinforcement bars will not be permitted except as otherwise authorized in writing by the Engineer.



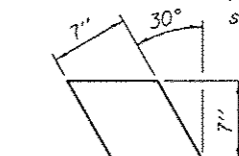
TYPICAL SECTION THRU BEAM

3- 1/2" Strands/Loop, 2 Ea. End. Ea. Beam. Loop shall be burned off after beams have been erected. Strands shall conform to the requirements of AASHTO M 203.



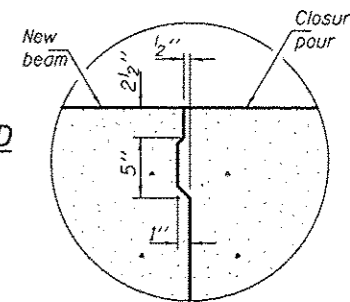
LIFTING LOOP

Approved alternate may be substituted for the above.



FABRIC BRG. PAD

1/2" Fabric Pads
(4 Req'd. per beam)



KEY DETAIL

*** BILL OF REINFORCEMENT BARS FOR ONE BEAM**

Bar	No.	Size	Length	Shape
A	34	#4	3'-3"	—
A1	18	#4	4'-0"	—
B	10	#4	11'-5"	—
B1	4	#4	4'-1"	—
G	4	#10	14'-4"	—
S	26	#3	3'-4"	—

*** ESTIMATED QUANTITIES FOR ONE BEAM**

	CONCRETE CU. YDS.	RE-BARS POUNDS
One Unit	1.8	490

* For information of suppliers of Precast Slab Units only.

DESIGNED - VHV
CHECKED - DAB
DRAWN - Kyle M. Steffan
CHECKED - VHV DAB

EXAMINED
PASSED
ACTING ENGINEER OF STRUCTURAL SERVICES
ACTING ENGINEER OF BRIDGES AND STRUCTURES

DATE - JANUARY 31, 2013

STATE OF ILLINOIS
DEPARTMENT OF TRANSPORTATION

APPROACH BEAM DETAILS
SN 060-0246

SHEET NO. 2 OF 6 SHEETS

F.A.S. RTE.	SECTION	COUNTY	TOTAL SHEETS	SHEET NO.
775	(54, 58, 68)RS-4	MADISON	44	35

CONTRACT NO. T6F27
ILLINOIS FED. AID PROJECT