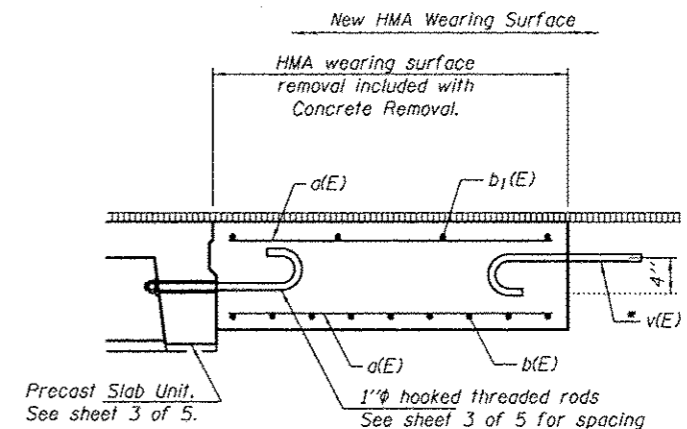
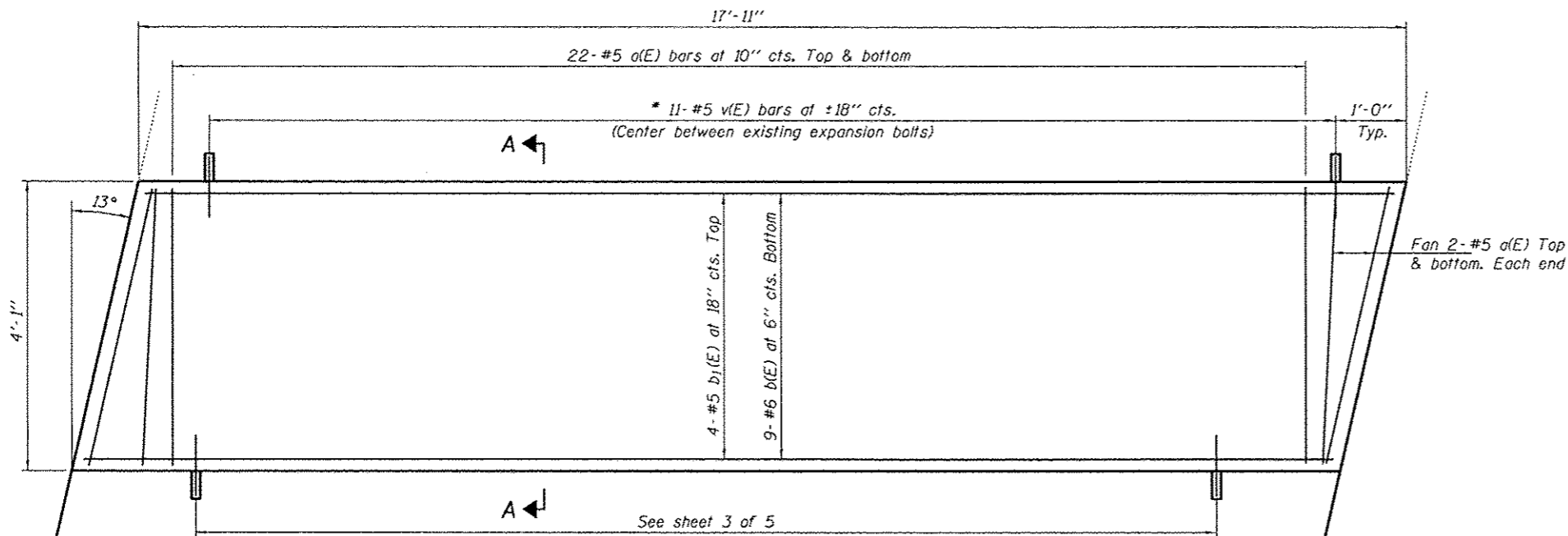


SECTION THRU SLAB

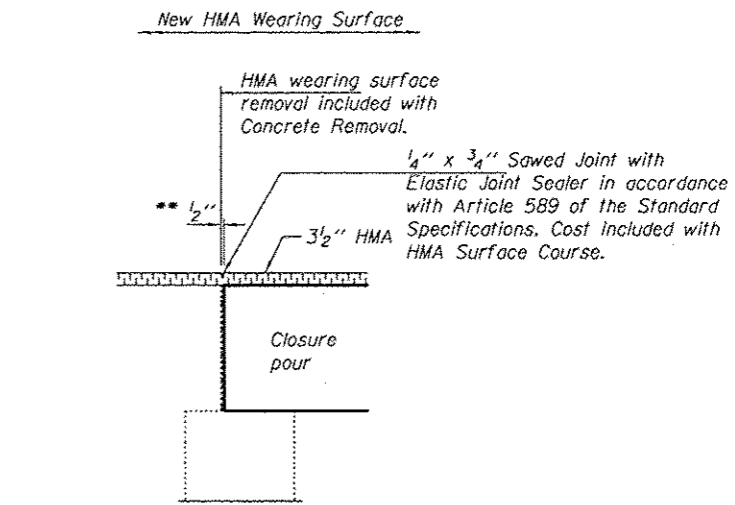


SECTION A-A



PLAN

Note:
Slab to be poured after
Precast Slab Unit is in place.

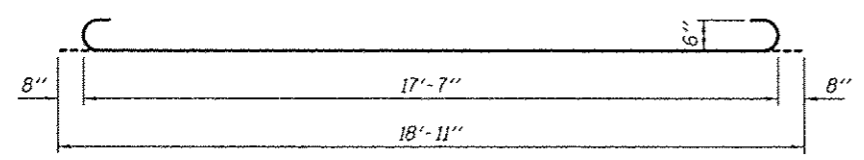


SECTION THRU APPROACH CAP
(At Rt. Ls)

** 1/2" joint shall be packed with a very dry mix of 2:1 sand and P.C. Mortar. 1/2" dimension may vary plus or minus to accommodate tolerance in beam lengths.

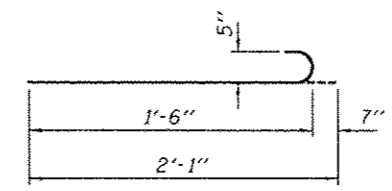
FOUR CLOSURE POURS
BILL OF MATERIAL

Bar	No.	Size	Length	Shape
a(E)	208	#5	3'-9"	—
b(E)	36	#6	18'-11"	⌒
b1(E)	16	#5	17'-7"	—
v(E)	44	#5	2'-1"	⌒
Concrete Removal			Cu. Yd.	13.5
Concrete Superstructure			Cu. Yd.	13.5
Reinforcement Bars, Epoxy Coated			Pound	2230



BAR b(E)

* Epoxy grout v(E) bars in 9" min. holes according to Article 584 of the Standard Specifications.



BAR v(E)

DESIGNED VP	EXAMINED	DATE JANUARY 31, 2013
CHECKED VHV	<i>Timothy A. Anelli</i> ACTING ENGINEER OF STRUCTURAL SERVICES	
DRAWN baliva	PASSED	REVISED
CHECKED VP VHV	<i>Carl Perry</i> ACTING ENGINEER OF BRIDGES AND STRUCTURES	REVISED

STATE OF ILLINOIS
DEPARTMENT OF TRANSPORTATION

CLOSURE POUR DETAILS
SN 060-0249

F.A.P. RTE.	SECTION	COUNTY	TOTAL SHEETS	SHEET NO.
789	154,58,68RS-4	MADISON	44	43
			CONTRACT NO. 76F27	
ILLINOIS FED. AID PROJECT				