

STATE OF ILLINOIS  
DEPARTMENT OF TRANSPORTATION  
DIVISION OF HIGHWAYS

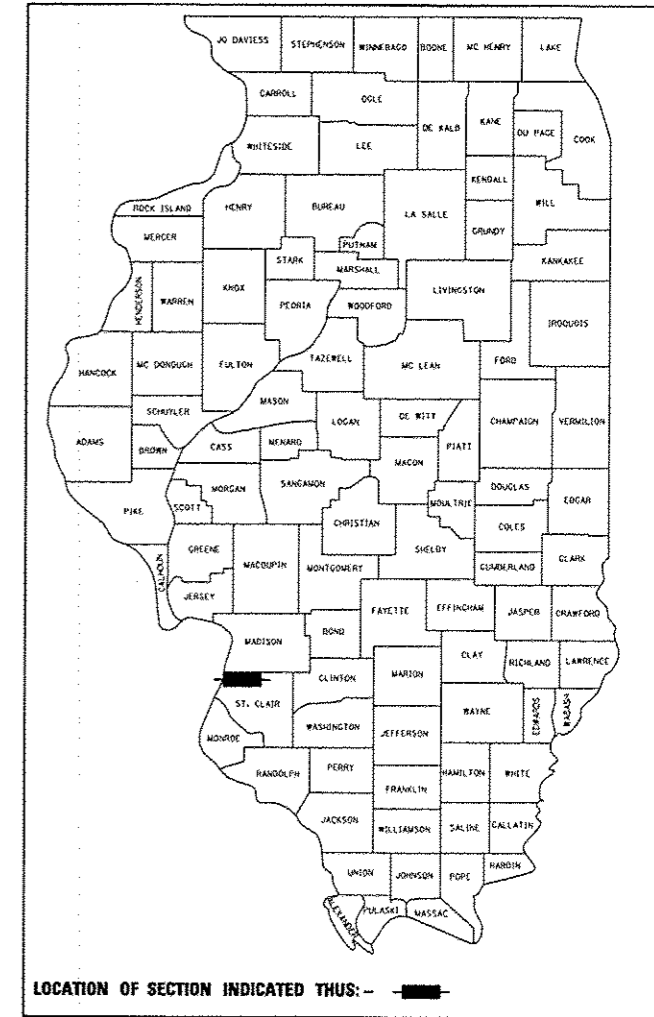
**PROPOSED  
HIGHWAY PLANS**  
FAP ROUTE 998 (RELOCATED I-70)  
SECTION 82-2-1LS

ST. CLAIR COUNTY  
C-98-032-12

RELOCATED I-70 AT RELOCATED IL 3  
LANDSCAPING

F.A.P. RTE.	SECTION	COUNTY	TOTAL SHEETS	SHEET NO.
998	82-2-1LS	ST. CLAIR	71	1
FED. ROAD DIST. NO.	ILLINOIS	CONTRACT NO. 76F39		

D-98-028-12



FOR INDEX OF SHEETS, SEE SHEET NO. 2

INTERSTATE 70  
59,940 (2030) 6,594 (30) INTERSTATE 48.96 (PCC-20)  
DESIGN SPEED = 60 MPH  
POSTED SPEED = 55 MPH

RELOCATED IL ROUTE 3  
ADT = 24,760 (2030)  
DESIGN SPEED = 45 MPH  
POSTED SPEED = 40 MPH

RAMPS A-D  
DESIGN SPEED = 50 MPH AT GORE, 35 MPH AT END  
POSTED SPEED = 45 MPH AT GORE, 30 MPH AT END  
RAMP A ADT = 12,610 (2030) 1,214 (30) INTERSTATE RAMP 14.30 (PCC-20)  
RAMP B ADT = 6,010 (2030) 443 (30) INTERSTATE RAMP 7.13 (PCC-20)  
RAMP C ADT = 16,940 (2030) 1,694 (30) INTERSTATE RAMP 17.20 (PCC-20)  
RAMP D ADT = 16,940 (2030) 1,694 (30) INTERSTATE RAMP 17.20 (PCC-20)

CONNECTOR ROAD  
ADT = 26,550 (2030)  
DESIGN SPEED = 35 MPH  
POSTED SPEED = 30 MPH

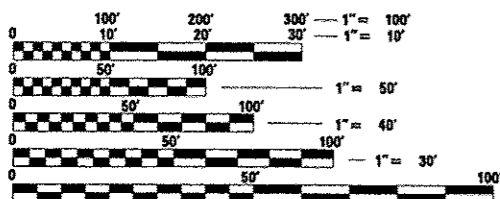
EXCHANGE AVENUE  
ADT = 16,940 (2030)  
DESIGN SPEED = 30 MPH  
POSTED SPEED = 25 MPH

EXISTING IL ROUTE 3 (ST. CLAIR AVE.)  
ADT = 9,000 (2008), 26,190 (2030)  
DESIGN SPEED = 40 MPH (S. OF TRRA CROSSING)  
DESIGN SPEED = 50 MPH (N. OF TRRA CROSSING)  
POSTED SPEED = 35 MPH (S. OF TRRA CROSSING)  
POSTED SPEED = 45 MPH (N. OF TRRA CROSSING)

1ST STREET  
ADT = 1,350 (2008), 1,700 (2030)  
DESIGN SPEED = 35 MPH  
POSTED SPEED = 30 MPH

PROJECT LOCATED IN: FAIRMONT CITY, ILLINOIS  
EAST ST. LOUIS, ILLINOIS

PLANS 1" = 50'  
PROFILES 1" = 5'  
X-SECTIONS 1" = 10' H  
1" = 5' V



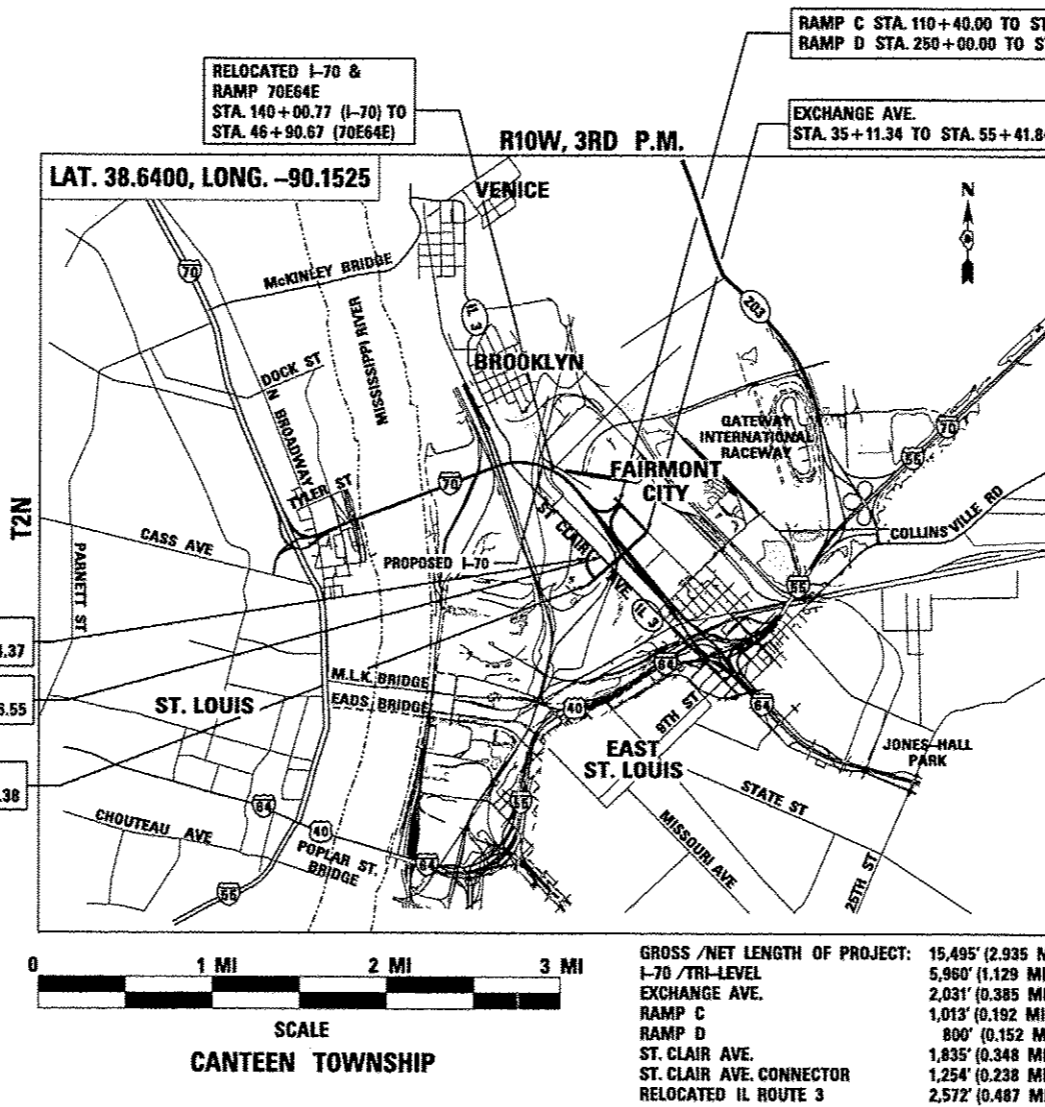
FULL SIZE PLANS HAVE BEEN PREPARED USING STANDARD ENGINEERING SCALES. REDUCED SIZED PLANS WILL NOT CONFORM TO STANDARD SCALES. IN MAKING MEASUREMENTS ON REDUCED PLANS, THE ABOVE SCALES MAY BE USED.

J.U.L.I.E.  
JOINT UTILITY LOCATION INFORMATION FOR EXCAVATION  
1-800-892-0123  
OR 811

PROJECT ENGINEER : MICHAEL D. PRITCHETT (618) 346-3180

PROJECT MANAGER : N/A

CONTRACT NO. 76F39



ROBERT J. STEIN  
062-040104  
LICENSED PROFESSIONAL ENGINEER  
OF ILLINOIS

EXPIRES: 11/30/13  
DATE: 12/18/12  
SHEETS: 1-32

STATE OF ILLINOIS  
DEPARTMENT OF TRANSPORTATION  
DIVISION OF HIGHWAYS

SUBMITTED December 20 2012

Deputy Director of Highways, Region Engineer

Feb 1 2013  
John D. Baranzelli, P.E.  
acting ENGINEER OF DESIGN AND ENVIRONMENT

Feb 1 2013  
Omer Osman, P.E.  
DIRECTOR OF HIGHWAYS, CHIEF ENGINEER

PRINTED BY THE AUTHORITY  
OF THE STATE OF ILLINOIS

**TENG**  
TENG & ASSOCIATES, INC.  
ENGINEERS/ARCHITECTS/PLANNERS  
205 N. MICHIGAN AVE. CHICAGO, IL 60601  
TELEPHONE: 312.618-0000