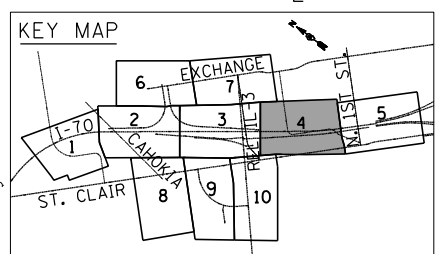
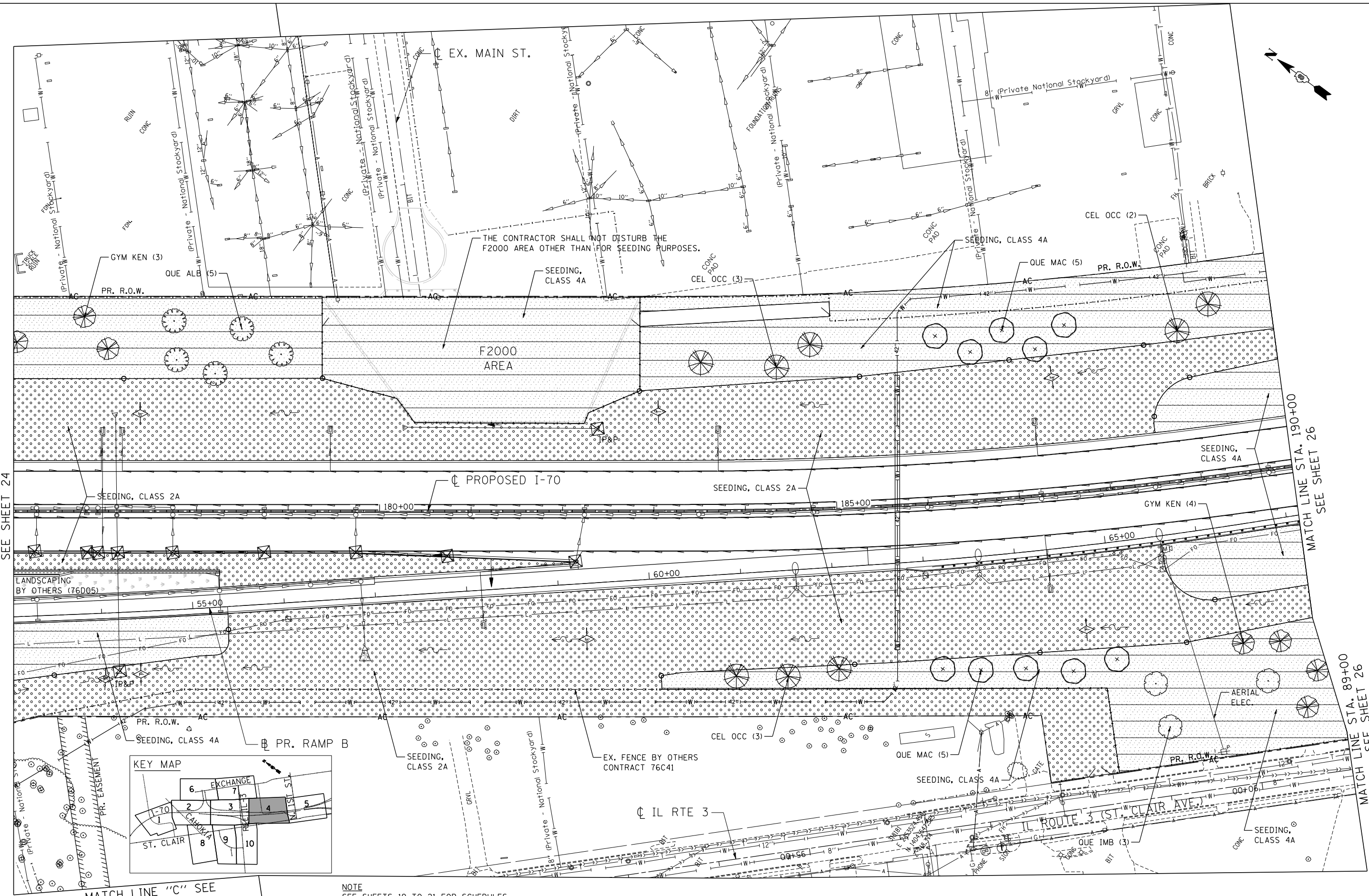


\DBCONN-99-MOTIF.LDGN, \DBCONN-99-LAYOUT1.LDGN, \DBCONN-99-MOTIF.LDGN, \DBCONN-08-LEGEND.LDGN, \DBCONN-08-MOTIF.LDGN, \DBCONN-11-MOTIF.LDGN, \DBCONN-10-MOTIF.LDGN, \DBCONN-10-EROSI.LDGN, \DBCONN-03-GEOMETRICS.LDGN, \DBCONN-17-2012.14.10.18 BONDHUJ \F5-004\AM\VALU.LDTRANS.07.2202.20868-001\CIVIL\CAO\99 ALL CONTRACTS\CONNSHEETS\CONTRACT 17\DBCONN-17-SHT-LANDSCAP-17600.DGN

MATCH LINE STA. 176+00
SEE SHEET 24

MATCH LINE STA. 190+00
SEE SHEET 26

MATCH LINE STA. 89+00
SEE SHEET 26



NOTE
SEE SHEETS 19 TO 21 FOR SCHEDULES
AND SHEET 18 FOR LANDSCAPING LEGEND.

FILE NAME =
#FILEL#
TENG TENG & ASSOCIATES, INC.
ENGINEERS/ARCHITECTS/PLANNERS
CHICAGO, ILLINOIS

USER NAME = #USER#	DESIGNED - JB	REVISED -
PLOT SCALE = #SCALE#	DRAWN - JB	REVISED -
PLOT DATE = #DATE#	CHECKED - ACL	REVISED -
	DATE - 12/21/12	REVISED -

STATE OF ILLINOIS
DEPARTMENT OF TRANSPORTATION
 I-70 CONNECTION

PROPOSED I-70
LANDSCAPING PLAN
STA. 176+00 TO STA. 190+00
 SCALE: 1"=50' SHEET NO. 4 OF 10 SHEETS STA. TO STA.

F.A.P. RTE.	SECTION	COUNTY	TOTAL SHEETS	SHEET NO.
998	82-2-1LS	ST. CLAIR	71	25
CONTRACT NO. 76F39				
FED. ROAD DIST. NO.	ILLINOIS FED. AID PROJECT			