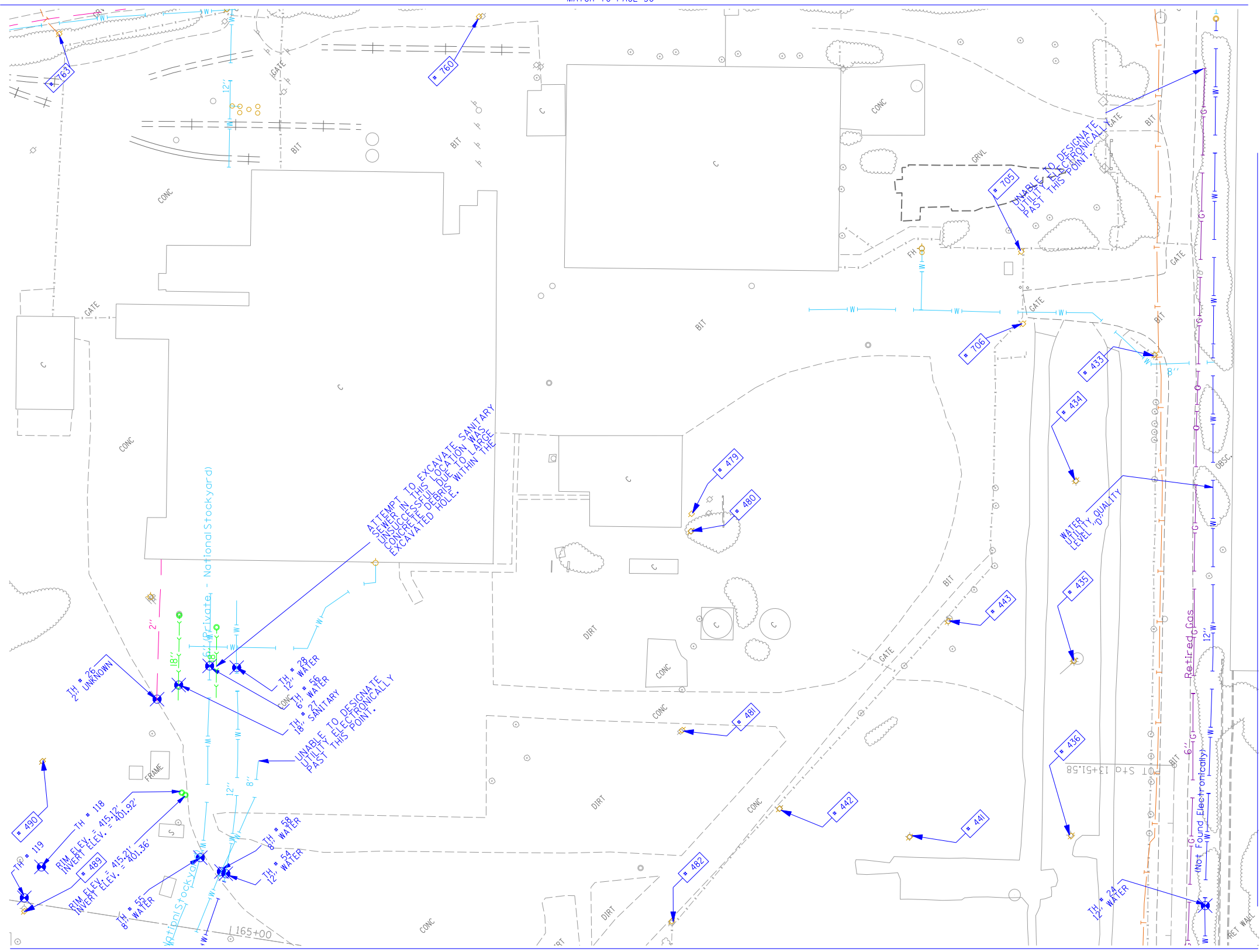


MATCH TO PAGE 30

MATCH TO PAGE 31

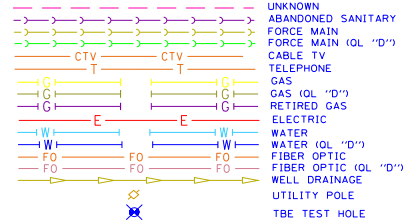
MATCH TO PAGE 6



MATCH TO PAGE 7

MATCH TO PAGE 12

TBE Pole Number	Approximate Location	Identification on Pole	Utilities Attached to Poles	Utility Owners	Notes: Additional Items Attached to Poles
433	E OF POLE 434	739460	ELECTRIC	AMEREN ELECTRIC	LIGHT
434	W OF POLE 433	739461	ELECTRIC	AMEREN ELECTRIC	LIGHT, GUY NE
435	S OF POLE 434	739462	ELECTRIC	AMEREN ELECTRIC	LIGHT
436	S OF POLE 435	739463	ELECTRIC	AMEREN ELECTRIC	TRANSFORMER, LIGHT
441	NE OF POLE 441	739469	ELECTRIC	AMEREN ELECTRIC	LIGHT
442	NW OF POLE 441	739468	ELECTRIC	AMEREN ELECTRIC	LIGHT
443	E OF POLE 442	739470	ELECTRIC	AMEREN ELECTRIC	LIGHT
479	NW OF POLE 434	739165	ELECTRIC	AMEREN ELECTRIC	TRANSFORMER PLATE, GUY E.
480	SW OF POLE 479	739169	ELECTRIC	AMEREN ELECTRIC	TRANSFORMER PLATE
481	SW OF POLE 480	739155	ELECTRIC	AMEREN ELECTRIC	
482	SW OF POLE 481	739161	ELECTRIC	AMEREN ELECTRIC	
489	NE OF POLE 487	739156	ELECTRIC	AMEREN ELECTRIC	LIGHT, TRANSFORMER
490	E OF POLE 489	739168	ELECTRIC	AMEREN ELECTRIC	GUY SE
705	NW OF POLE 433	739471	ELECTRIC	AMEREN ELECTRIC	LIGHT, ELEC - SW
706	SW OF POLE 705	739472	ELECTRIC	AMEREN ELECTRIC	LIGHT, ELEC - S, SW
763	ON EXCHANGE, 99' N OF PACKERS	749484	TELEPHONE, ELECTRIC	AT&T, AMEREN ELECTRIC	ANCHOR



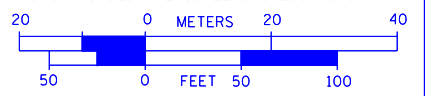
Utilities shown in color on these plans as depicted in the legend have been investigated by TBE Group, Inc in accordance with SUE Industry Standards. All other information shown has been provided to TBE Group, Inc by others. TBE's SUE field investigation was finished on 5/22/09. Changes to utilities after this date may have been made and therefore may result in variances from this plan. Consideration should be given to updating this plan if deemed advisable prior to final design and construction.
 All sheets are printed in black and white. Color copies are available upon request.

ALL UTILITIES SHOWN QUALITY LEVEL "B" UNLESS NOTED OTHERWISE.

- Utility Quality Level "A" : Test Hole
- Utility Quality Level "B" : Designating
- Utility Quality Level "C" : Research with Survey
- Utility Quality Level "D" : Records Research



TBE GROUP, INC.
 CIVIL ENGINEERING • TRANSPORTATION • ENVIRONMENTAL PLANNING • UTILITY ENGINEERING/LOCATING



Checked By: _____ Date: _____
 TBE Job No. IL09500601,602,603,604, 607,608,609,610
 SUE Plan Pages: 11 of 35

FILE NAME =	USER NAME =	DESIGNED EG, IP, LP	REVISED
#FILE#		DRAWN KLC	7/28/09 - 8/26/09 ADDED TEST HOLES #60-108
	PLOT SCALE = 1" = 50'	CHECKED JB	REVISED
	PLOT DATE = #DATE#	DATE 7/15/10	5/04/10 ADDED TEST HOLES #118-119

STATE OF ILLINOIS DEPARTMENT OF TRANSPORTATION

Mississippi River Bridge Project

SCALE: SHEET NO. STA. TO STA.

F.A.P. RTE.	SECTION	COUNTY	TOTAL SHEETS	SHEET NO.
	82-2-1LS	St. Clair	71	43
PTB NO. 147-038				
FED. ROAD DIST. NO. ILLINOIS Job No. D-98-061-08				