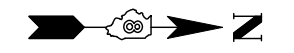
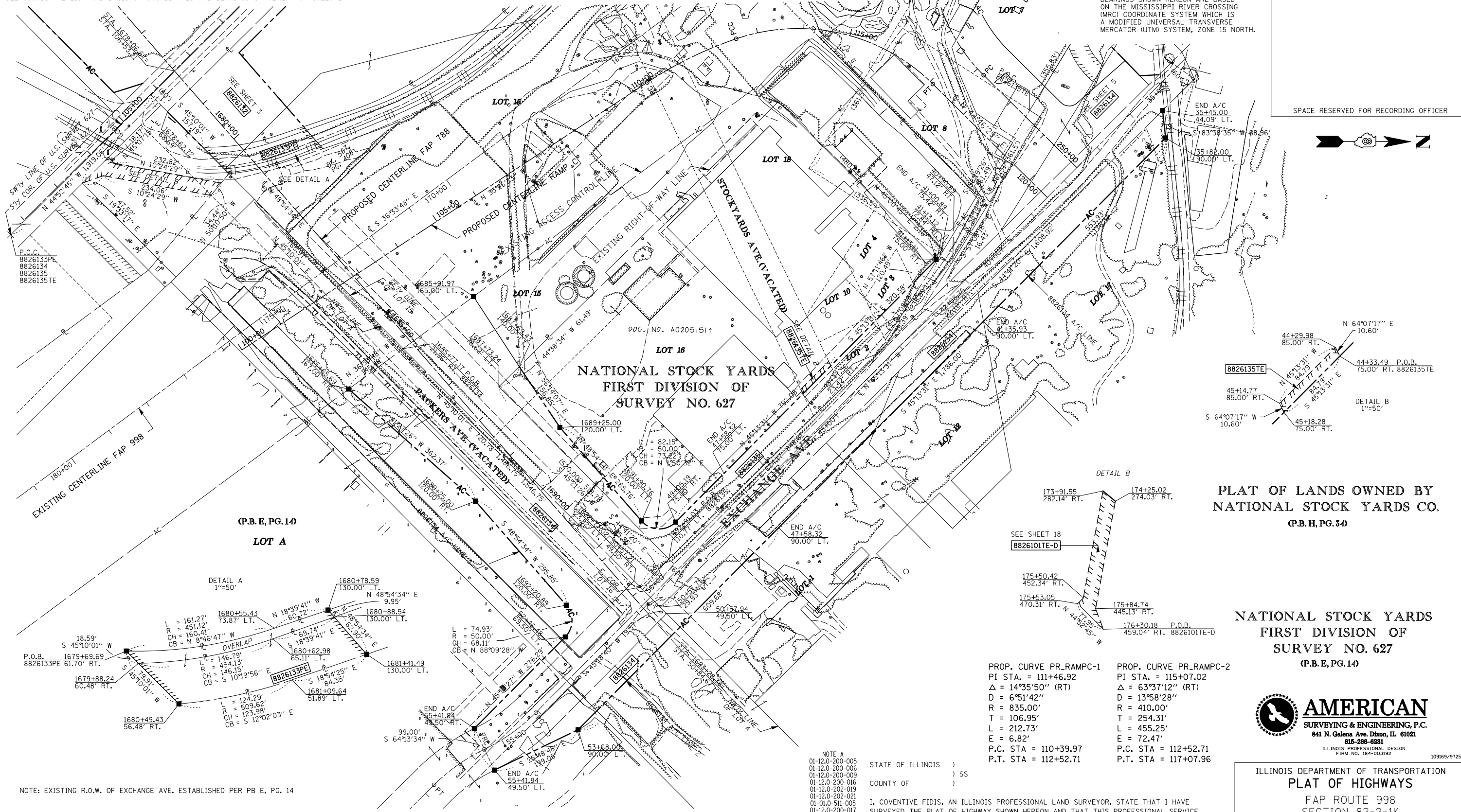


PART OF U.S. SURVEY 627, T2N, R10W, OF THE 3RD PM, ST. CLAIR COUNTY, ILLINOIS

SEE COORDINATE LIST AND BASIS OF COORDINATES AND BEARINGS STATEMENT ON SHEET 2

BEARINGS SHOWN HEREON ARE BASED ON THE MISSISSIPPI RIVER CROSSING (MRC) COORDINATE SYSTEM WHICH IS A MODIFIED UNIVERSAL TRANSVERSE MERCATOR (UTM) SYSTEM, ZONE 15 NORTH.

SPACE RESERVED FOR RECORDING OFFICER



PLAT OF LANDS OWNED BY NATIONAL STOCK YARDS CO.
(P.B.H, PG. 34)

NATIONAL STOCK YARDS FIRST DIVISION OF SURVEY NO. 627
(P.B.E, PG. 14)



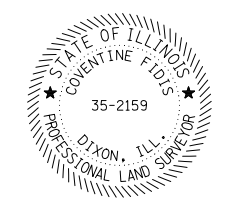
PROP. CURVE PR_RAMPC-1
PI STA. = 111+46.92
Δ = 14°35'50" (RT)
D = 6°51'42"
R = 835.00'
T = 106.95'
L = 212.73'
E = 6.82'
P.C. STA = 110+39.97
P.T. STA = 112+52.71

PROP. CURVE PR_RAMPC-2
PI STA. = 115+07.02
Δ = 63°37'12" (RT)
D = 13°58'28"
R = 410.00'
T = 254.31'
L = 455.25'
E = 72.47'
P.C. STA = 112+52.71
P.T. STA = 117+07.96

STATE OF ILLINOIS)
COUNTY OF) SS

I, COVENTINE FIDIS, AN ILLINOIS PROFESSIONAL LAND SURVEYOR, STATE THAT I HAVE SURVEYED THE PLAT OF HIGHWAY SHOWN HEREON AND THAT THIS PROFESSIONAL SERVICE CONFORMS TO THE CURRENT ILLINOIS MINIMUM STANDARDS FOR A BOUNDARY SURVEY FOR THE PROPOSED PARCEL(S) TO BE ACQUIRED BY THE STATE OF ILLINOIS, DEPARTMENT OF TRANSPORTATION, SHOWN HEREON.

DATED _____
COVENTINE FIDIS, PLS NO. 35-2159
LICENSE EXPIRATION DATE: 11/30/2012



NOTE: EXISTING R.O.W. OF EXCHANGE AVE. ESTABLISHED PER PB E, PG. 14

PARCEL NO.	OWNER	TOTAL HOLDING ACRES	FEE SIMPLE ACQUISITION								EASEMENTS				PERMANENT TAX NUMBER	PROPERTY ACQUIRED BY
			GROSS		PREVIOUSLY DEDICATED		DEDICATED BY OCCUPATION		NET		REMAINDER	PE = PERMANENT		EASEMENT PURPOSE		
			ACRES	SQ. FT.	ACRES	SQ. FT.	ACRES	SQ. FT.	ACRES	SQ. FT.		ACRES	SQ. FT.			
8826133	ST. LOUIS NATIONAL STOCKYARDS COMPANY TITLE REPORT NO. SC-6224	N/A	N/A	N/A	N/A	N/A	N/A	N/A	N/A	N/A	N/A	PE 0.2883	PE 12,557	BRIDGE CONSTRUCTION & MAINTENANCE	01-12-0-201-026	
8826134	ST. LOUIS NATIONAL STOCKYARDS COMPANY TITLE REPORT NO. SC-6353, 6160, 6315, 6316, 6339	199.8635	9,3173	405,860	2,2311	97,187	1,1006	47,944	7,0862	308,673	190,5462	N/A	N/A	ENTRANCE CONSTRUCTION	NOTE A	
8826135	250 PACKERS AVENUE, L.L.C., A MISSOURI L.L.C. TITLE REPORT NO. SC-5457	10.2300	1,1821	51,493	N/A	N/A	N/A	N/A	N/A	N/A	N/A	TE 0.0195	TE 848	ENTRANCE CONSTRUCTION	01-12-0-201-027	

ILLINOIS DEPARTMENT OF TRANSPORTATION
PLAT OF HIGHWAYS
FAP ROUTE 998
SECTION 82-2-1K
ST. CLAIR COUNTY
JOB NO. R-98-026-08
STATION 1680+00 TO STATION 1693+28

SCALE: 1" = 100'

ILLINOIS DEPARTMENT OF TRANSPORTATION
DIVISION OF HIGHWAYS/REGION 5/DISTRICT 8
1102 EASTPORT PLAZA DRIVE
COLLINSVILLE, ILLINOIS 62234-6198

F.A.P. RTE.	SECTION	COUNTY	TOTAL SHEETS	SHEET NO.
	82-2-1LS	ST. CLAIR	71	69

CONTRACT NO. 76F39

FED. ROAD DIST. NO. ILLINOIS FED. AID PROJECT