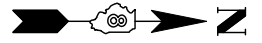


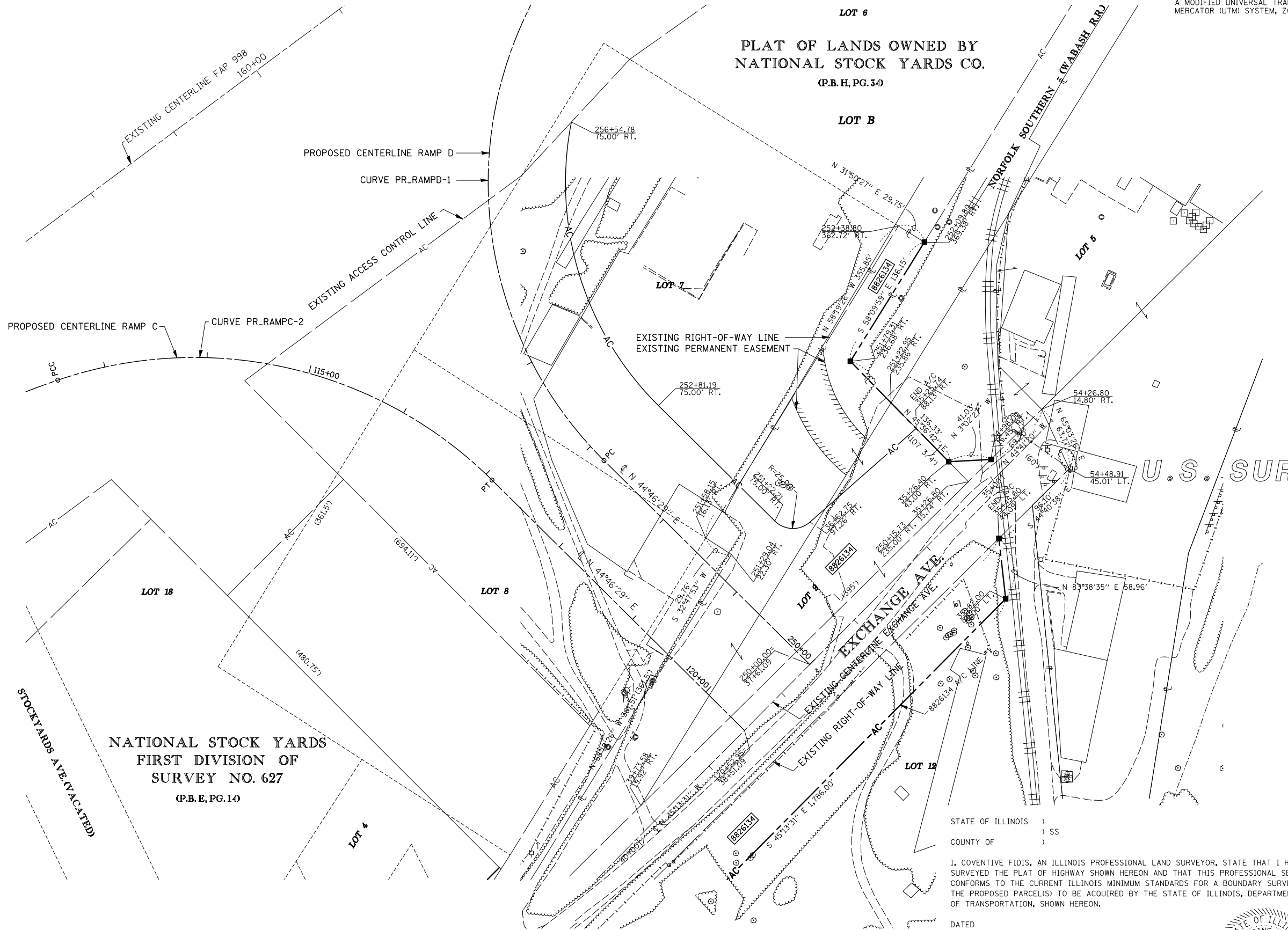
SEE COORDINATE LIST AND BASIS OF COORDINATES AND BEARINGS STATEMENT ON SHEET 2

BEARINGS SHOWN HEREON ARE BASED ON THE MISSISSIPPI RIVER CROSSING (MRC) COORDINATE SYSTEM WHICH IS A MODIFIED UNIVERSAL TRANSVERSE MERCATOR (UTM) SYSTEM, ZONE 15 NORTH.

SPACE RESERVED FOR RECORDING OFFICER



PLAT OF LANDS OWNED BY NATIONAL STOCK YARDS CO. (P.B. H, PG. 34)



PROP. CURVE PR_RAMPC-2
 PI STA. = 115+07.02
 $\Delta = 63^{\circ}37'12''$ (RT)
 D = 13⁵⁸'28"
 R = 410.00'
 T = 254.31'
 L = 455.25'
 E = 72.47'
 P.C. STA. = 112+52.71
 P.T. STA. = 117+07.96

PROP. CURVE PR_RAMPD-1
 PI STA. = 257+14.62
 $\Delta = 97^{\circ}30'58''$ (RT)
 D = 15⁰⁴'40"
 R = 380.00'
 T = 433.43'
 L = 646.75'
 E = 196.42'
 P.C. STA. = 252+81.19
 P.T. STA. = 259+27.94

U.S. SURVEY 627

NATIONAL STOCK YARDS FIRST DIVISION OF SURVEY NO. 627 (P.B. E, PG. 14)

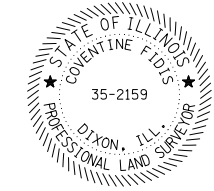
NATIONAL STOCK YARDS FIRST DIVISION OF SURVEY NO. 627 (P.B. E, PG. 14)

STATE OF ILLINOIS)
) SS
 COUNTY OF)

I, COVENTINE FIDIS, AN ILLINOIS PROFESSIONAL LAND SURVEYOR, STATE THAT I HAVE SURVEYED THE PLAT OF HIGHWAY SHOWN HEREON AND THAT THIS PROFESSIONAL SERVICE CONFORMS TO THE CURRENT ILLINOIS MINIMUM STANDARDS FOR A BOUNDARY SURVEY FOR THE PROPOSED PARCEL(S) TO BE ACQUIRED BY THE STATE OF ILLINOIS, DEPARTMENT OF TRANSPORTATION, SHOWN HEREON.

DATED

COVENTINE FIDIS, PLS NO. 35-2159
 LICENSE EXPIRATION DATE: 11/30/2012



ILLINOIS DEPARTMENT OF TRANSPORTATION
PLAT OF HIGHWAYS
 FAP ROUTE 998
 SECTION 82-2-1K
 ST. CLAIR COUNTY
 JOB NO. R-98-026-08
 STATION 21+00 TO STATION 30+00

SCALE: 1" = 50'

ILLINOIS DEPARTMENT OF TRANSPORTATION
 DIVISION OF HIGHWAYS/REGION 5/DISTRICT 8
 1102 EASTPORT PLAZA DRIVE
 COLLINSVILLE, ILLINOIS 62234-6198

F.A.P. RTE.	SECTION	COUNTY	TOTAL SHEETS	SHEET NO.
	82-2-1LS	ST. CLAIR	71	70

CONTRACT NO. 76F39

FED. ROAD DIST. NO. ILLINOIS FED. AID PROJECT