

F.A.P. RTE.	SECTION	COUNTY	TOTAL SHEETS	SHEET NO.
332	4B-1	WHITE	70	1
FED. ROAD DIST. NO.	ILLINOIS	CONTRACT NO. 78154		

### INDEX OF SHEETS

SHEET NO.	DESCRIPTION
<b>ROADWAY PLANS</b>	
1.	COVER SHEET
2.	GENERAL NOTES AND STANDARDS
3.-8.	SUMMARY OF QUANTITIES
9.-11.	TYPICAL SECTIONS
12.	SCHEDULES OF QUANTITIES
13.-15.	IL RTE 1 PLAN AND PROFILE
16.-17.	STAGE CONSTRUCTION PLAN AND DETAILS
18.	EROSION CONTROL AND DRAINAGE PLANS
19.	SEEDING AND MULCHING DETAILS
20.	STEP CONSTRUCTION ON EXISTING FILL DETAILS
21.	BUTT JOINT DETAIL
<b>STRUCTURE PLANS</b>	
22.	GENERAL PLAN & ELEVATION
23.	GENERAL DATA
24.	STAGE CONSTRUCTION DETAILS
25.	TEMPORARY CONCRETE BARRIER FOR STAGE CONSTRUCTION
26.	TOP OF SLAB ELEVATIONS
27.	TOP OF WEST APPROACH SLAB ELEVATIONS
28.	TOP OF EAST APPROACH SLAB ELEVATIONS
29.	SUPERSTRUCTURE
30.-31.	SUPERSTRUCTURE DETAILS
32.-33.	BRIDGE APPROACH SLAB DETAILS
34.	WEST ABUTMENT
35.	EAST ABUTMENT
36.	PIER 1
37.	PIER 2
38.	PIER 3
39.	PIER 4
40.	PIER 5
41.	HP PILE DETAILS
42.	BAR SPLICER ASSEMBLY DETAILS
43.-44.	BORING LOGS
<b>EXISTING STRUCTURE PLANS</b>	
<b>SN 097-0007</b>	
45.-56.	EXISTING STRUCTURE PLANS - FOR INFORMATION ONLY
<b>CROSS SECTIONS</b>	
57.-70.	IL RTE 1 CROSS SECTIONS

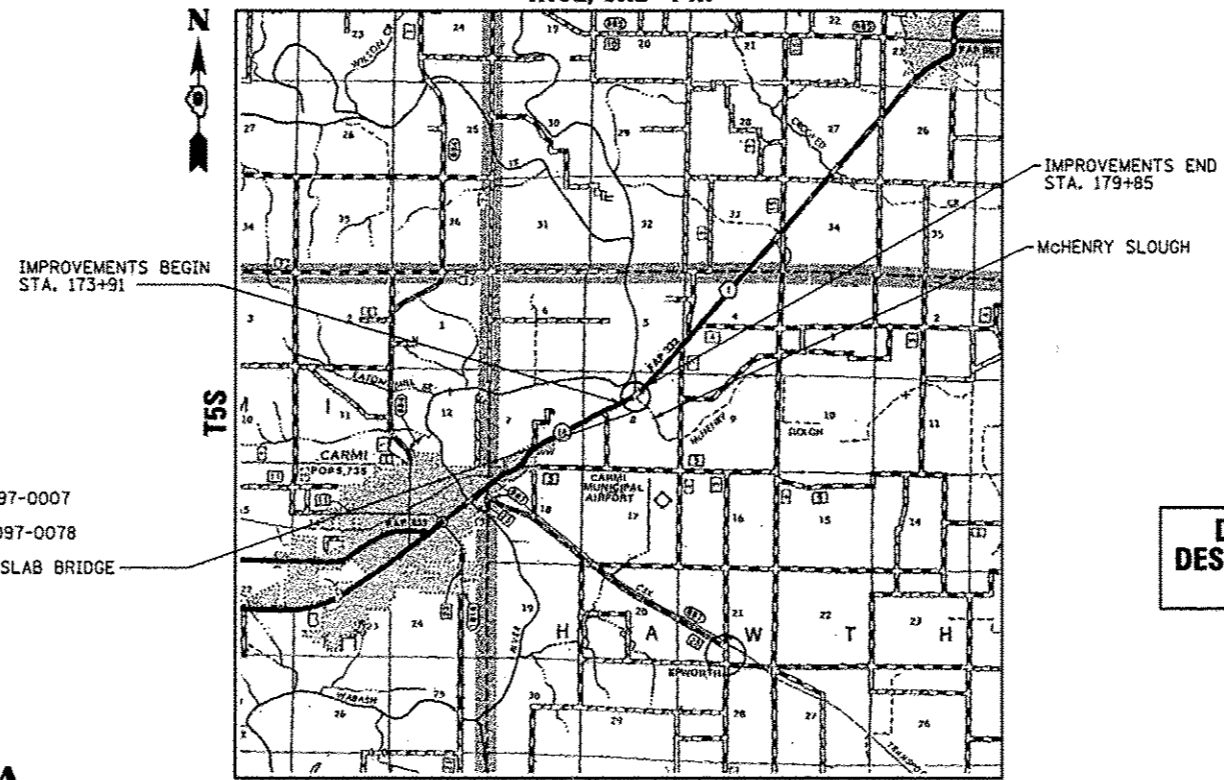
**STATE OF ILLINOIS**  
**DEPARTMENT OF TRANSPORTATION**  
**DIVISION OF HIGHWAYS**

# PROPOSED HIGHWAY PLANS

**FAP ROUTE 332 (IL 1)**  
**SECTION 4B-1**  
**PROJECT NHPP-0332(113)**  
**WHITE COUNTY**

**C - 99 - 008 - 10**  
**BRIDGE REPLACEMENT**  
**OVER McHENRY SLOUGH**

**R10E, 3RD PM**



**LOCATION MAP**

**DESIGN DESIGNATION**  
**N.A.**

**FUNCTIONAL CLASSIFICATION: MINOR ARTERIAL (NON URBAN)**  
**DESIGN SPEED: 55 mph**  
**POSTED SPEED: 55 mph**  
**ADT: 5,300 (2011)**  
**PV: 90%**  
**TRUCKS: 10%**  
**TOWNSHIP: HAWTHORNE**

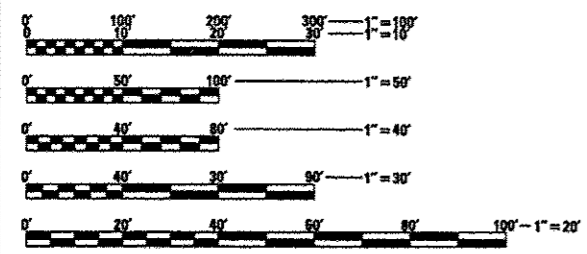
STATE OF ILLINOIS  
DEPARTMENT OF TRANSPORTATION  
DIVISION OF HIGHWAYS

SUBMITTED Dec 10 2012  
Omur Osman  
DEPUTY DIRECTOR OF HIGHWAYS, REGION ENGINEER

Feb 1 2013  
John D. Baranzoli P.E.  
acting ENGINEER OF DESIGN AND ENVIRONMENT

Feb 1 2013  
Omur Osman P.E.  
DIRECTOR OF HIGHWAYS, CHIEF ENGINEER

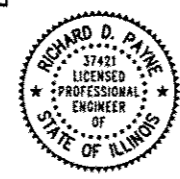
**PRINTED BY THE AUTHORITY  
OF THE STATE OF ILLINOIS**



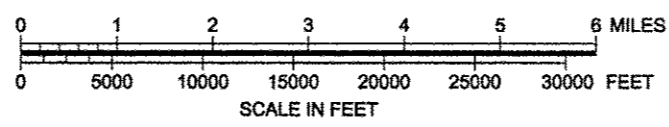
FULL SIZE PLANS HAVE BEEN PREPARED USING STANDARD ENGINEERING SCALES. REDUCED SIZED PLANS WILL NOT CONFORM TO STANDARD SCALES. IN MAKING MEASUREMENTS ON REDUCED PLANS, THE ABOVE SCALES MAY BE USED.

J.U.L.I.E.  
JOINT UTILITY LOCATION INFORMATION FOR EXCAVATION  
1-800-892-0123  
OR 811

DISTRICT 9 NO. (618) 549-2171  
PROJECT ENGINEER: DAVID PICHE  
CONTRACT NO. 78154



Richard D. Payne  
DATE: 08/03/12  
ILLINOIS PROFESSIONAL LICENSE NO. 37421  
EXPIRATION DATE: 11-30-09



GROSS LENGTH = 594 FT. = 0.113 MI.  
NET LENGTH = 594 FT. = 0.113 MI.