

**PIER 4
BILL OF MATERIAL**

Bar	No.	Size	Length	Shape
h ₄ (E)	72	#5	22'-3"	—
p ₁ (E)	14	#7	21'-3"	—
s ₂ (E)	350	#4	3'-3"	⌋
s ₃ (E)	38	#4	10'-5"	□
u ₁ (E)	36	#5	9'-4"	⌋
u ₂ (E)	6	#5	7'-8"	⌋
v(E)	44	#5	3'-8"	—
v ₁₂ (E)	3	#5	19'-7"	—
v ₁₃ (E)	44	#5	18'-9"	—
v ₁₄ (E)	47	#5	17'-10"	—

Concrete Structures	Cu. Yd.	80.2
Reinforcement Bars, Epoxy Coated	Pound	5670
Test Pile, Steel HP14x73	Each	1
Furnishing Steel Piles, HP14x73	Foot	702
Driving Piles	Foot	702
Bar Splicers	Each	43

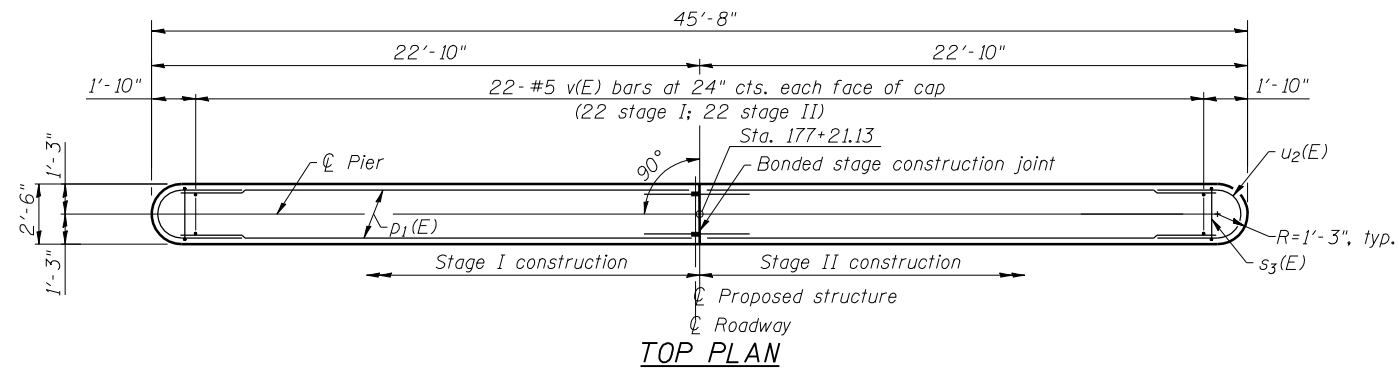
For details of piles and Concrete Encasement, see sheet 20 of 23.
For details of Bar Splicers, see sheet 21 of 23.
See sheet 15 of 23 for bar bending details.

PILE DATA

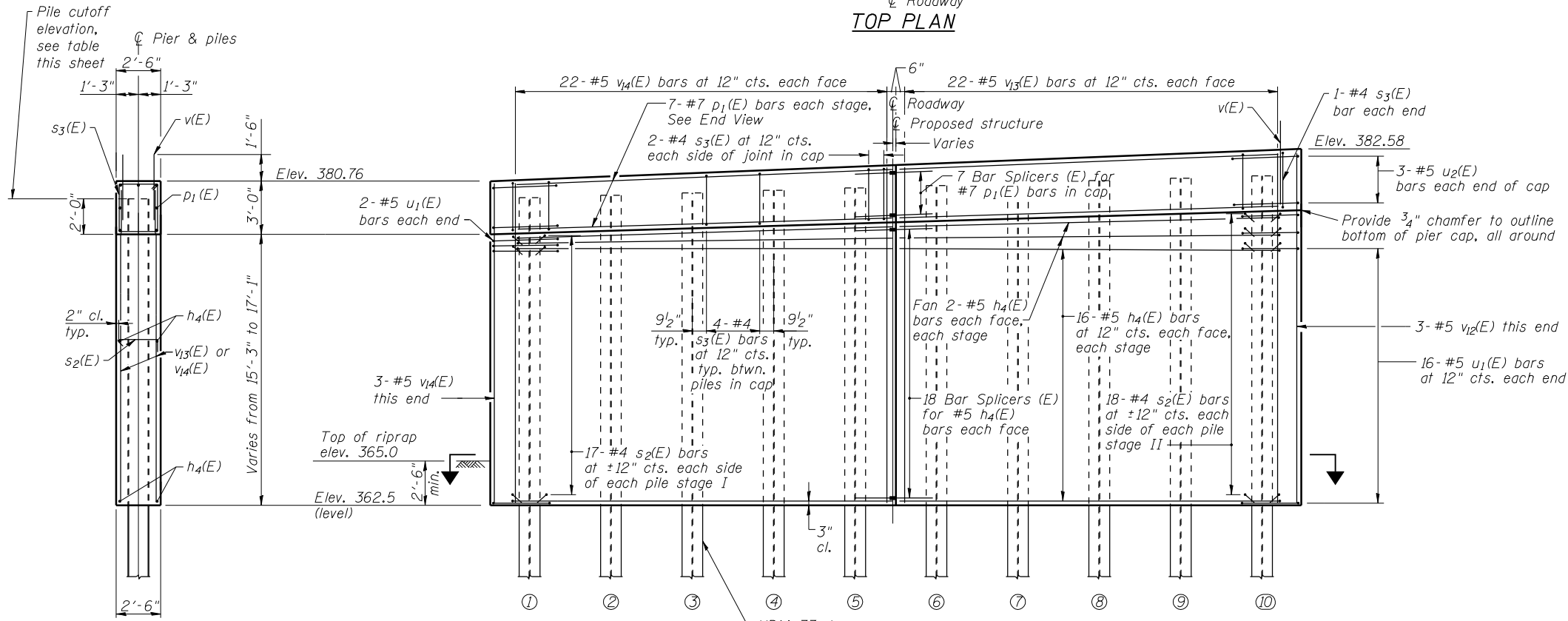
Type: Steel HP14x73
Nominal Required Bearing: 578 kips
Factored Resistance Available: 318 kips
Estimated Length: 78'
No. of Production Piles: 9
No. of Test Piles: 1

PILE CUTOFF TABLE

Pile No.	Cutoff Elevation
①	379.85
②	380.03
③	380.21
④	380.40
⑤	380.58
⑥	380.76
⑦	380.95
⑧	381.13
⑨	381.31
⑩	381.50

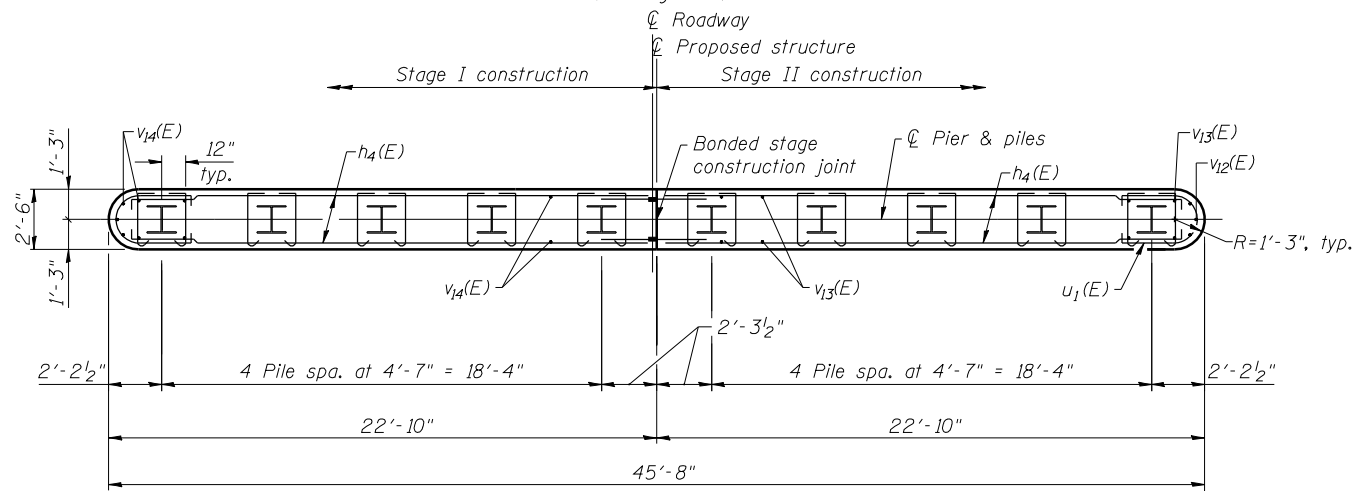


TOP PLAN

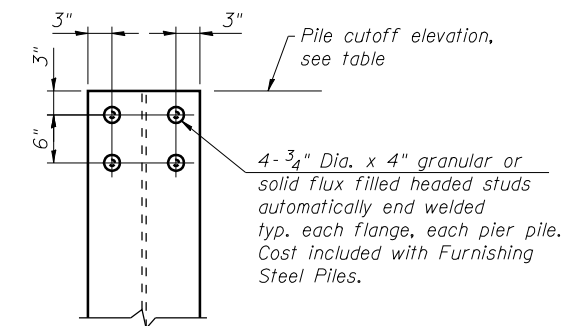


ELEVATION
(Looking East)

END VIEW



SECTION



TOP OF PILE DETAIL



USER NAME = has
ESCA PROJECT NO. 988.11
PLOT SCALE = 1/8" = 1' / IN.
PLOT DATE = 10/31/2012 7:17:17 AM

DESIGNED - ELH 08/12
CHECKED - RDP 10/12
DRAWN - DWH/HAS 08/12
CHECKED - ELH 10/12

**STATE OF ILLINOIS
DEPARTMENT OF TRANSPORTATION**

**PIER 4
STRUCTURE NO. 097-0078**

SHEET NO. 18 OF 23 SHEETS

F.A.P. RTE.	SECTION	COUNTY	TOTAL SHEETS	SHEET NO.
332	4B-1	WHITE	70	39

CONTRACT NO. 78154
ILLINOIS FED. AID PROJECT AID